

2001 30 FT 70Th ANNIVERSARY TRAILER

TABLE OF CONTENTS

SECTION I A through C

APPLIANCE

Air Conditioner	I-1
Furnace	I-1
Microwave	I-1
Range	I-2
Refrigerator	I-2
Water Heater	I-3

BODY

End shell, aft	I-5
End shell, front	I-7
Roof	I-9
Curbside wall	I-11
Roadside wall	I-13
Slide out room	I-15
Interior body	I-16

CHASSIS

A-frame	I-17
Power jack	I-18
LP Bottle rack/Tool box	I-20
Step	I-23
Outrigger/underbelly	I-25
Jacks/Below floor storage	I-26
Axles/shocks/wheels	I-27
Brakes, 12"	I-28

2001 30 FT 70Th ANNIVERSARY TRAILER
TABLE OF CONTENTS
SECTION II
D through E

[DECALS/EXTERIOR TRIM](#).....II-1

DOORS/WINDOWS/AWNING

[Doors](#)II-2

[Windows/Stone guard](#)II-4

[Awning](#)II-5

[DRAPES/BLINDS/VALANCES](#)II-6

ELECTRICAL

[110 volt](#)..... II-10

[12 volt](#)II-11

[Interior lights/switches](#)..... II-12

[Exterior lights & reflectors](#) II-13

ENTERTAINMENT

[Radio/Antenna](#)..... II-14

2001 30 FT 70Th ANNIVERSARY TRAILER TABLE OF CONTENTS

SECTION III-EXCELLA

F through H

FASTENERS (common fasteners available locally are not listed)

[Rivets](#)..... III-1

FLOOR COVERING

[Carpet](#)..... III-3

[Tile, Bathroom](#)..... III-3

[Mats](#)..... III-3

FURNITURE

[Interior doors](#)..... III-4

[Mirrors](#)..... III-5

[Drawer/Face/Boxes](#)..... III-6

[Rear bedroom](#)..... III-7

[Bath](#)..... III-9

[Galley](#)..... III-11

[Lounge](#)..... III-13

HARDWARE

[Exterior locks/hinges](#)..... III-14

[Window hardware](#)..... III-18

[Interior drawer slides/hinges latches](#)... III-20

[Bath accessories/table/drawer slide](#) ... III-24

[Misc.](#)..... III-25

[Slide-out mechanism](#)..... III-27

[Awning hardware](#)..... III-28

2001 30 FT 70Th ANNIVERSARY TRAILER
TABLE OF CONTENTS
SECTION IV- EXCELLA

L through Z

LABELS and TAGS	IV-1
OPTIONS	IV-2
PLUMBING	
LPG	IV-3
Fresh water/Faucets	IV-4
Drain water/Tanks/Sinks	IV-9
Toilet	IV-14
SAFETY EQUIPMENT	IV-16
SEALER/GASKETS/PAINT	IV-17
UPHOLSTERY/FOAM/MATTRESS	IV-18
VENTS/FANS	IV-22
WOOD/LAMINATES/TRIM	IV-23

SECTION I A through C

APPLIANCE

Air Conditioner.....	I-1
Furnace	I-1
Microwave.....	I-1
Range	I-2
Refrigerator.....	I-2
Water Heater.....	I-3

BODY

End shell, aft	I-5
End shell, front	I-7
Roof.....	I-9
Curbside wall.....	I-11
Roadside wall	I-13
Slide out room.....	I-15
Interior body	I-16

CHASSIS

A-frame.....	I-17
Power jack	I-18
LP Bottle rack/Tool box	I-20
Step.....	I-23
Outrigger/underbelly	I-25
Jacks/Below floor storage	I-26
Axles/shocks/wheels.....	I-27
Brakes, 12"	I-28

2001 30 FT 70Th ANNIVERSARY TRAILER

APPLIANCES

AIR CONDITIONER, DUO THERM

690323-32	Air conditioner, Duo Therm w/heat pump
690323-31	Comfort Control Center
690380-03	Air box, polar white
385582-01	Decal, Airstream w/bar
690323-100	Shroud, exterior, Penguin air conditioner
961270	Pan, assy air conditioner drain
600118	Plastic AC drain tubing

FURNACE, HYDROFLAME

690274-04	Furnace, Hydro-flame, #8525-IV, 25,000, 25ft.
690274-01	Furnace, Hydro-flame, #8531-IV, 31,000, 28ft.
690274	Furnace, Hydro-flame, #8535IV, 34,000, 30, 31ft & 34ft.
690274-09	Door exterior, Hydroflame
601244-03	Register. Rotaire, black
600247	4" duct hose, flexible
690274-102	Module board, furnace
511228	Thermostat, off white

MICROWAVE

690345-01	Microwave, convection, Sharp
690345-03	Trim ring, convection microwave
690407-01	Microwave oven, Dometic
690407-02	Trim kit, Dometic microwave

2001 30 FT 70Th ANNIVERSARY TRAILER

APPLIANCES

RANGE

690396-06	cook top, 3-burner, Magic Chef Black
690396-01	Range 22", Maytag w/oven
144876	Trim ring, range recessed
690396-03	Range cover, bi-fold
964383-02	Range covers, Corian, set

DOMETIC REFRIGERATOR

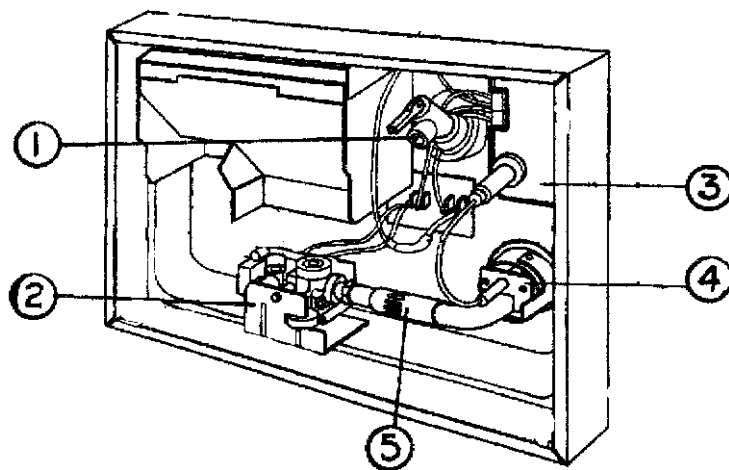
690370-02	Refrigerator, RM 3862L, 2-way
801225-015	Map refrigerator door insert 15.5"x20.38"
801225-035	Map refrigerator door insert 38.38" x 20.38"
104439	Louvered panel, exterior access door
101394	Cover, refrigerator roof vent, large
100341	Vent collar w/screen, refrigerator, large
690415	Kit, meat/dairy/w/ice trays

2001 30 FT 70Th ANNIVERSARY TRAILER

APPLIANCES

ATWOOD WATER HEATER, GC6AA-9E

- 690405 Water heater, Atwood, elec. ignition, 110 volt/gas
- 500933 Switch, water heater, electronic
- 690209 Access cover, brushed aluminum
- 510514 Switch, 110v, 3-way, priority (water heater/micro-wave) CSA only
- 385988 Decal water heater
- 381648 Cover latch hole, water heater



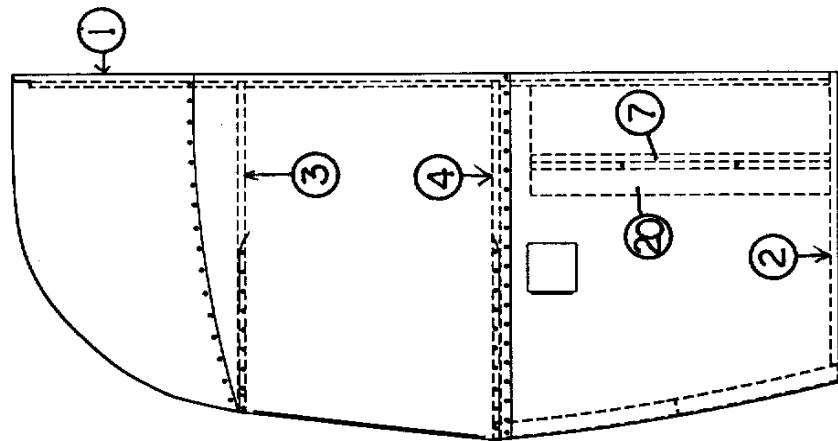
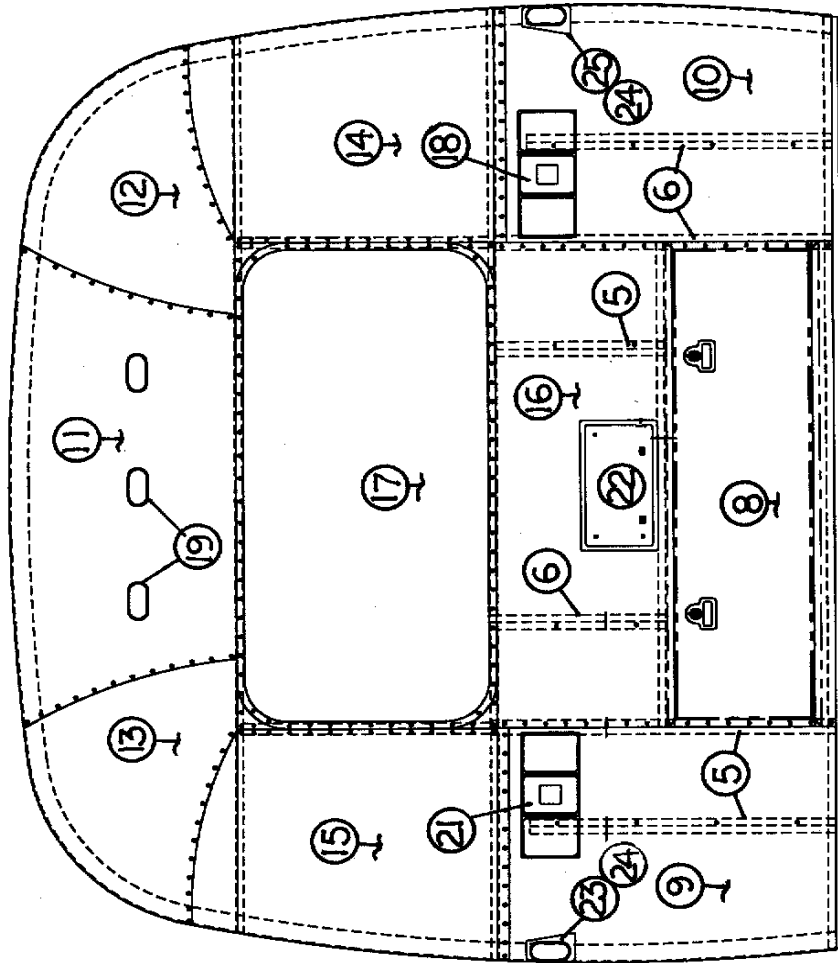
Front of water heater

- 1) 091604 Relief valve, pressure/temperature
- 2) 093870 Solenoid valve
- 3) 093865 Circuit board
- 4) 093868 Spark probe
- 5) 092615 Main burner

Back of water heater

- 091160 Heating element, 110 volt
- 091873 ECO thermostat
- 091092 On/off switch, 110 Volt

2001 30 FT 70Th ANNIVERSARY TRAILER



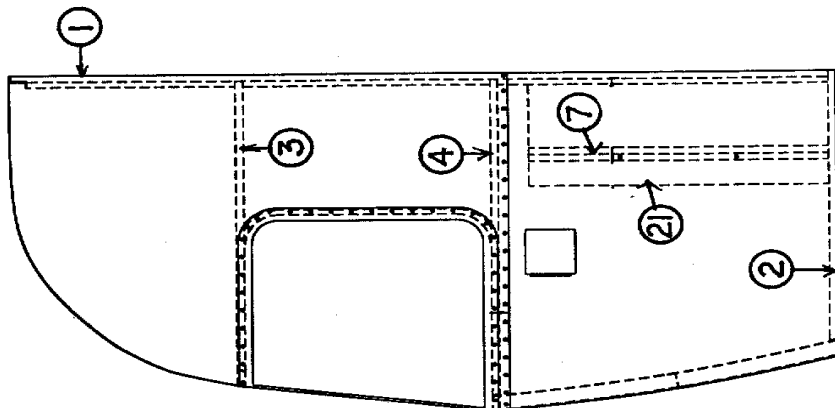
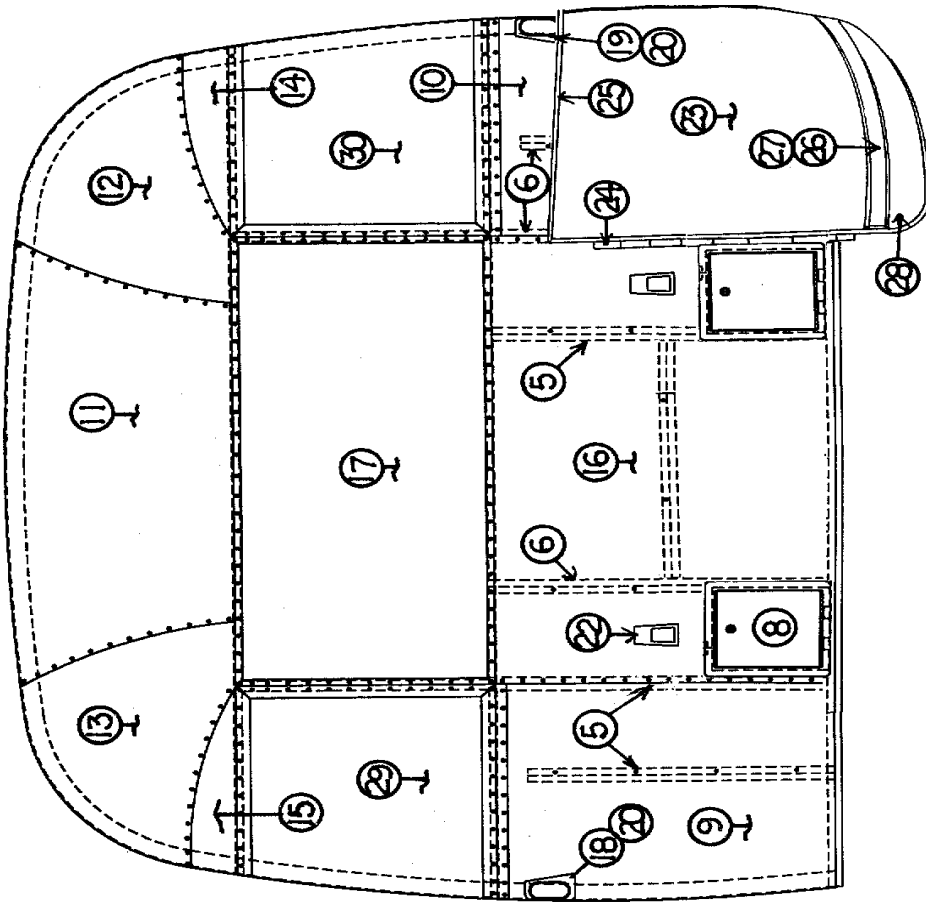
See next page for P/N

2001 30 FT 70Th ANNIVERSARY TRAILER

BODY-AFT END

- 921161-11 End shell complete, rear, w/trunk door
- 1) 114670 End bow
 - 2) 114676 Floor bow
 - 3) 114678 Upper window bow
 - 4) 114677 Lower window bow
 - 5) 114505-01 Support, lower end, LH
 - 6) 114505-02 Support, lower end, RH
 - 7) 101315 Brace, vertical rear
 - 8) 921159-01 Trunk door assembly (some models)
 - 9) 114895 Segment #29
 - 10) 114894 Segment #28
 - 11) 114893 Segment #25
 - 12) 114890 Segment #26
 - 13) 114891 Segment #27
 - 14) 114889 Segment, center right
 - 15) 114888 Segment, center left
 - 16) NPN Alum. Sheet, .060 x 19.0" x 51.0" (cut from 114880)
 - 17) 371348-02 Window, rear escape
 - 18) 962169-02 Taillight complete, CS
 - 19) 510511 Clearance light, red
 - 20) NPN Alum. Sheet, .040 x12.0"x 29.0" (cut from 114880)
 - 21) 962169-01 Taillight complete, RS
 - 22) 201954 License plate housing, black
 - 23) 101178 Base, clearance light, casting, RS rear
 - 24) 510511 Clearance light, red
 - 25) 101177 Base, clearance light casting, CS rear

2001 30 FT 70Th ANNIVERSARY TRAILER
VIEWED FACING FROM EXTERIOR



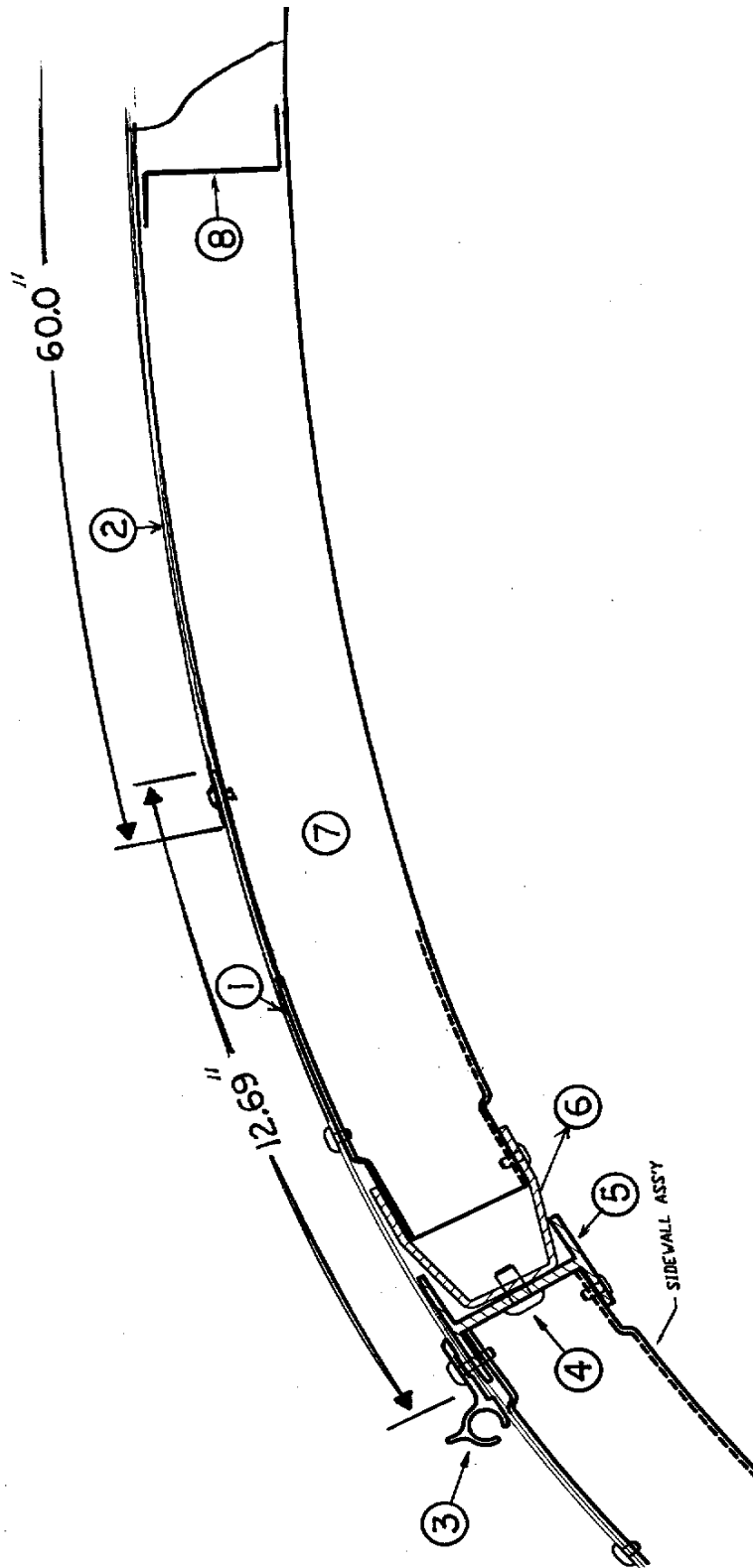
See next page for P/N

2001 30 FT 70Th ANNIVERSARY TRAILER

BODY-FRONT END

921161-12	End shell complete
1) 114670	End bow
2) 114676	Floor bow
3) 114678	Upper window bow
4) 114677	Lower window bow
5) 114505-01	Support, lower end, LH
6) 114505-02	Support, lower end, RH
7) 101315	Brace, vertical rear
8) 109852-01	Battery box assembly
9) 114895	Segment #29
10) 114894	Segment #28
11) 114893	Segment #25
12) 114890	Segment #26
13) 114891	Segment #27
14) 114889	Segment, center right
15) 114888	Segment, center left
16) NPN Alum. sheet, .060" x 34.75" x 51" (cut from 114880)	
17) 371346-02	Window, front, dark glass
18) 101178	Base, lamp, cast polished, RS
19) 101177	Base, lamp, cast polished, CS
20) 510112	Clearance light, amber
21)) NPN Alum. sheet, .040 x 12" x 29" (cut from 114880)	
22) 510732	Utility light #1327
23) 685276-100	Wrap protector, SS, specify side
24) 381605-01	Hinge, stainless, wrap protector
25) 100742-01	Extrusion, mirror/wrap protector trim
26) 114460	Extrusion, rub rail
27) 201763-01	Insert, rub rail
28) 200542	Underbelly wrap, RS wrap protector
28a) 200543	Underbelly wrap, CS wrap protector
29) 372089	Panoramic window, CS front
30) 372088	Panoramic window, RS front

2001 30 FT 70Th ANNIVERSARY TRAILER



See next page for P/N

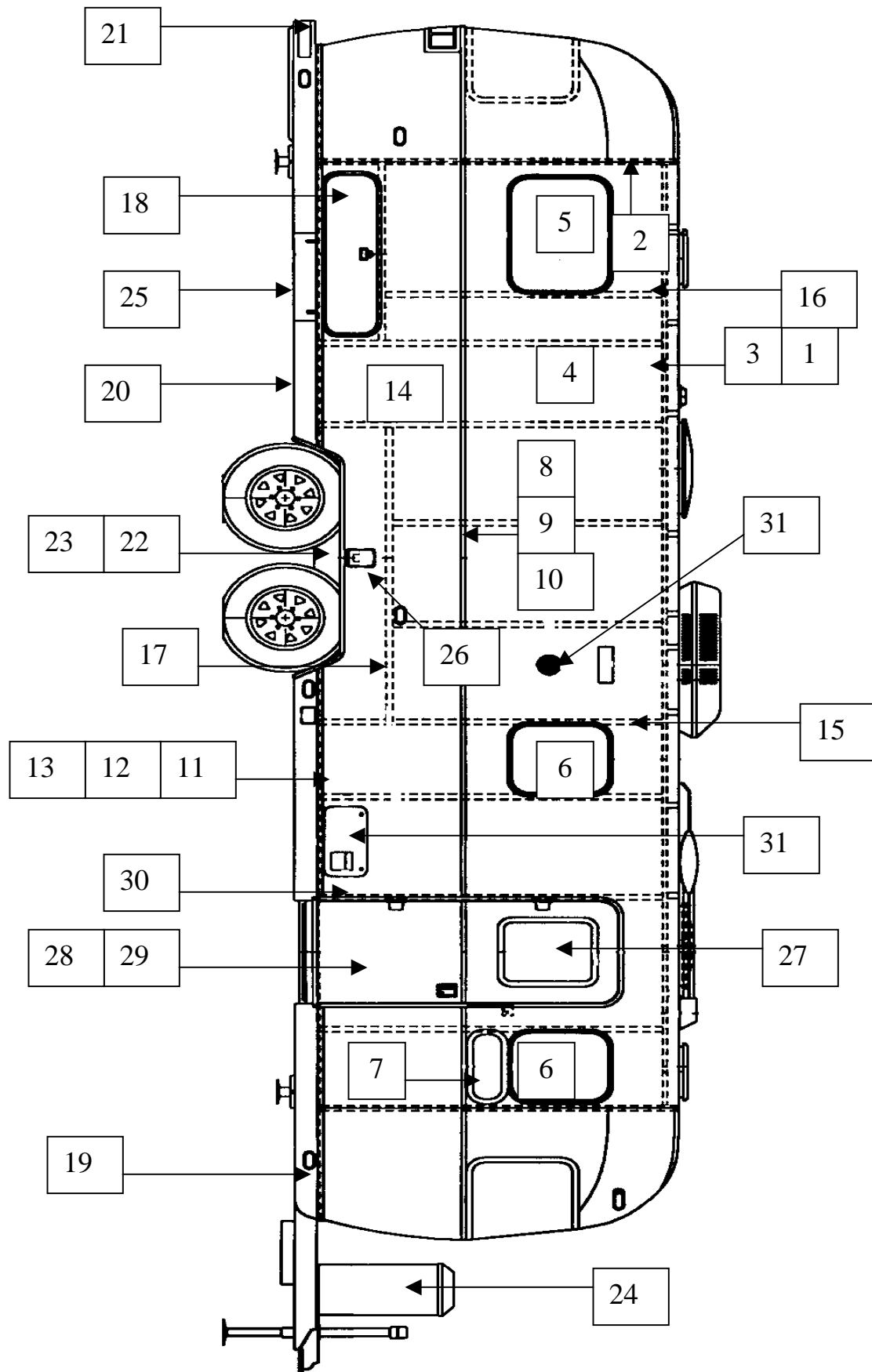
2001 30 FT 70Th ANNIVERSARY TRAILER

BODY

ROOF-END VIEW

- | | |
|---------------|---|
| 1) 114669-307 | Alum. Sheet ,white, .032" x 12.69" x 307" |
| 2) 114489-262 | Alum. sheet,white,.032 x 60.0 x 262" |
| 3) 114290 | Extrusion, awning/drip rail |
| 4) 340123-02 | Rivet, Huck, 3/16 x 1/2" |
| 5) 104707-05 | Extrusion, "I" beam |
| 6) 114987 | Extrusion, roof corner |
| 7) 114668 | Roof bow |
| 8) 104408 | Extrusion, Z bar, horizontal |

2001 30 FT 70Th ANNIVERSARY TRAILER

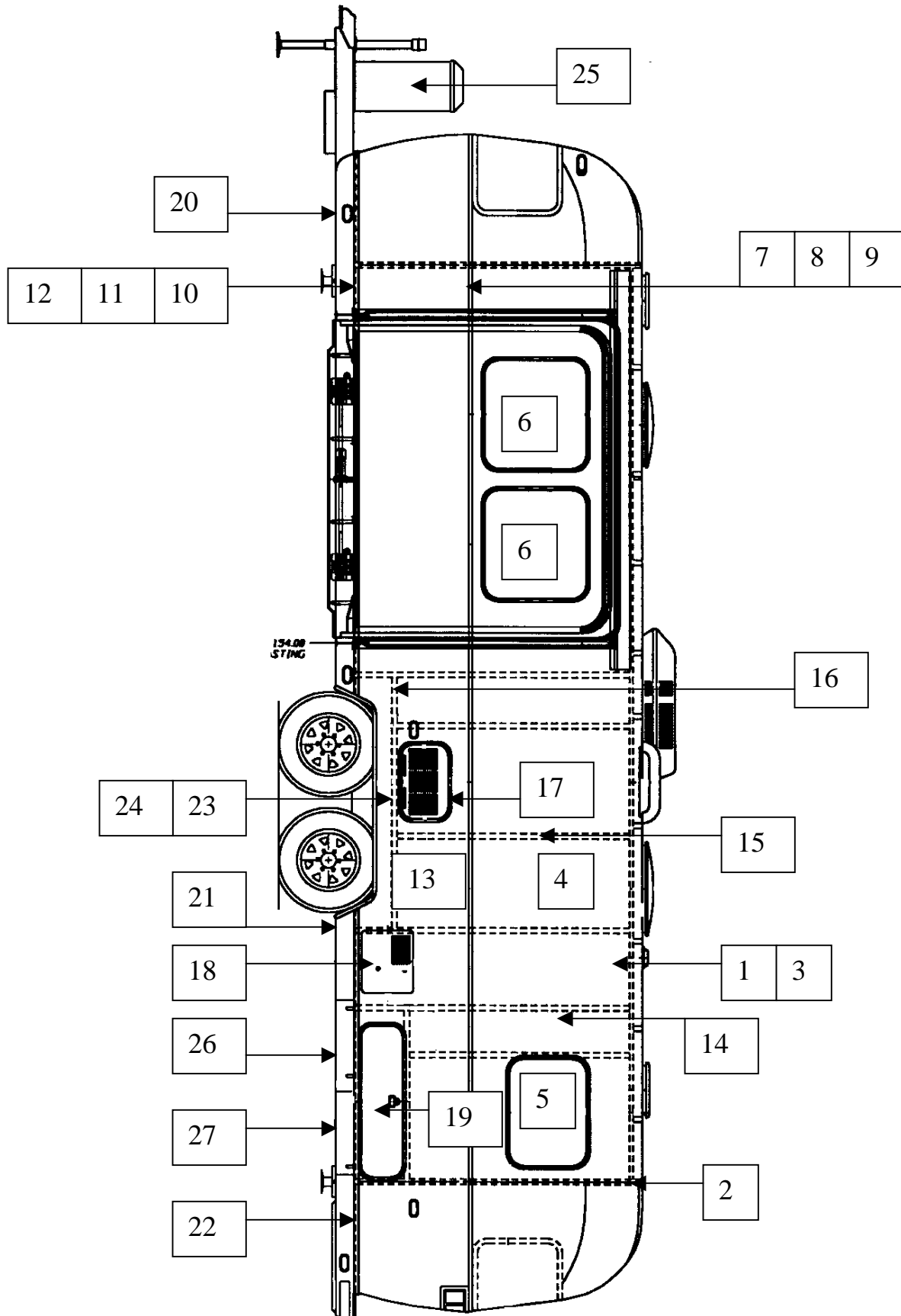


2001 30 FT 70Th ANNIVERSARY TRAILER

BODY-30 FT-S/O-70th Anniversary CS wall

- | | |
|----------------|--|
| 1) 114290-03 | Extrusion, awning, drip rail |
| 2) 114670 | Rib, end bow |
| 3) 104707 | Extrusion, "I" beam |
| 4) 114880-262 | Alum. Sheet, upper, .040 x 51" x 262 |
| 5) 371324-02 | Window, 30" opening |
| 6) 371323-01 | Window, 18" opening |
| 7) 371269-01 | Window, 18", stacked |
| 8) 114328 | Extrusion beltline |
| 9) 201912 | Molding, chrome, beltline |
| 10) 100034 | "Z" bar 48", stiffener |
| 11) 114460 | Extrusion, rub rail |
| 12) 201763-01 | Insert, rub rail, chrome, 1" |
| 13) 100986 | Floor channel |
| 14) 114879-262 | Aluminum sheet, .040 x 33 x 262" |
| 15) 114387-01 | Bow, Z rib, RH |
| 16) 114387-02 | Bow, Z rib, LH |
| 17) 100986 | Wheel well stiffener |
| 18) 922288-01 | Door, side access, long |
| 19) 200543 | Banana wrap, CS front |
| 20) 101131-01 | Underbelly, wrap, .024 x 22.5", pewter |
| 21) 201974 | Bumper, rear corner, CS |
| 22) 684936 | Wheel well trim, inner, tandem axle |
| 23) 684937 | Wheel well trim, outer, tandem axle |
| 24) 108393 | Bottle cover, LP, w/o decals |
| 25) 144496-02 | Door, utility compartment |
| 26) 601194 | Water fill w/lock |
| 27) 371319-05 | Window, main door |
| 28) 110067-04 | Main door assy. |
| 29) 114654 | Screen door assy. |
| 30) 114652 | Main door jamb, formed |
| 31) 690274-09 | Cover, Hydroflame furnace |
| 32) 500092 | Flood light |

2001 30 FT 70Th ANNIVERSARY TRAILER

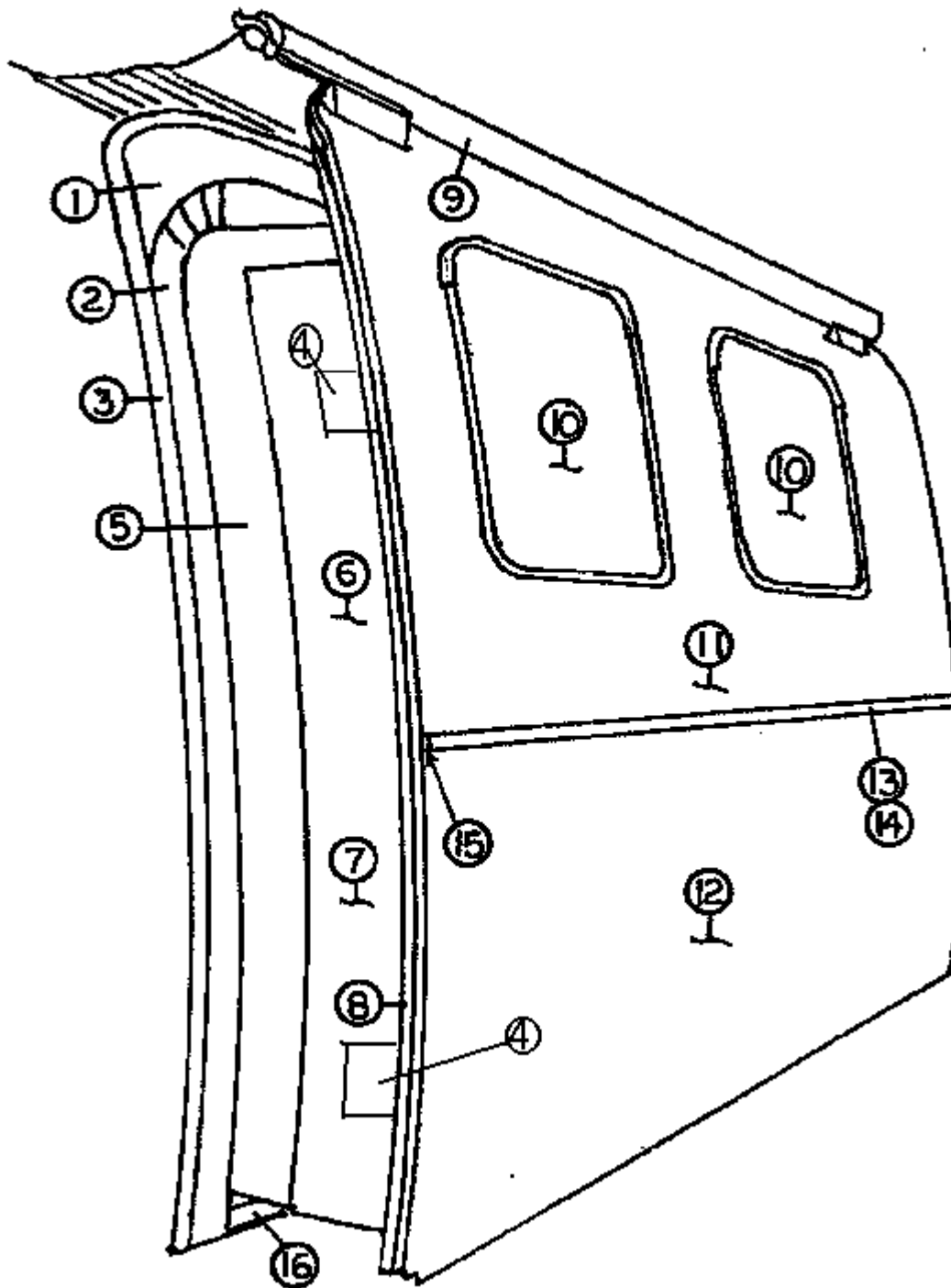


2001 30 FT 70Th ANNIVERSARY TRAILER

30Ft. slide out, 70th Anniversary RS wall

- 1) 114290-03 Extrusion, awning rail/drip rail
- 2) 114670 Rib, end bow
- 3) 104707 Extrusion, "I" beam
- 4) 114880-262 Aluminum sheet, .040 x 51" x 262"
- 5) 371324-02 Window, 30 inch opening
- 6) 371379 Window, 30 opening, tall
- 7) 114328 Extrusion beltline
- 8) 201912 Molding, chrome, beltline
- 9) 100034 "Z" bar 48", stiffener
- 10) 114460 Extrusion, rub rail
- 11) 201763-01 Insert, rub rail, chrome, 1"
- 12) 100986 Floor channel
- 13) 114879-262 Aluminum sheet, .040 x 33 x 262"
- 14) 114387-01 Bow, Z rib, RH
- 15) 114387-02 Bow, Z rib, LH
- 16) 100986 Wheel well stiffener
- 17) 104439 Louvered panel, refrigerator access door
- 18) 690209 Cover, brushed aluminum, Atwood
- 19) 922288-01 Door, side access, long
- 20) 200542 Banana wrap, RS front
- 21) 101131-01 Underbelly wrap, .024 x 22.5, pewter
- 22) 201974-01 Bumper, rear corner, RS
- 23) 684936 Wheel well trim, inner, tandem axle
- 24) 684937 Wheel well trim, outer, tandem axle
- 25) 108393 Bottle cover, LP, w/o decals
- 26) 114496-02 Door, utility compartment
- 27) 114496-01 Door, power cord compartment

2001 30 FT 70Th ANNIVERSARY TRAILER



2001 30 FT 70Th ANNIVERSARY TRAILER

30' Slide out room

1) 965248	Slide out jamb, fiberglass
2) 381669-02	Wiper seal, 30' S\O trailer
3) 114974-01	Trim, exterior jamb, S\O, RH
3A) 114974-02	Trim exterior jamb, S\O, LH
4) 203243	Nylon guide block
5) 965247	Room shell fiberglass
6) 114990-10	End skin, aft
7) 114990-09	End skin, fwd
8) 381663	Gasket, Room to exterior skin
9) 703122-02	Cover, roll out awning
9A) 702949-01	Mounting hardware, cover awning
10) 371379	Window, 30" opening, tall
11) 115025-02	Outer skin, upper
12) 115024-02	Outer skin, lower
13) 114328	Extrusion, beltline trim
14) 201912	Molding. Chrome, beltline trim
15) 114417	Casting, close out, beltline insert
16) 381589	Gasket, floor wiper

Not shown

381748	Travel locks, manual
915638	Bracket, travel lock mounting
203376	Acrylic disc, ¼" x 2" dia. Clear
915610	Close out, slide out mechanism
115029	Cover bottom, slide out motor
801304	Shim, slide out , roller
381705	Roller block assy.
114941	Close out, under floor, center
203024	Fiberglass roof material, white, 106" wide
6000329	Silver tape, 2" wide
801303-03	Fascia board, aft
801303-04	Facia board, fwd
801298-01	Fascia board, upper, 89"
115000	Rocker panel alum.

2001 30 FT 70Th ANNIVERSARY TRAILER

BODY-INTERIOR

(Hardware such as hinges, locks and latches are located in the **hardware** section of this book)

114445	Aluminum inside skin, .032" x 34" x coil
114853-01	Aluminum inside skin, .032" x 57" x coil
702481	Wall liner, Geometric Pearl *Adhesive, Fastbond 2000
702482-03	Headliner, Spectra Opal, textured
201728-01	Extrusion, plastic, ceiling trim retainer
201728-03	Extrusion, plastic, ceiling trim
203138-01	Extrusion, plastic, wall trim, white
203138-02	Extrusion, plastic, wall trim, brown
203138-03	Extrusion, plastic, wall trim, beige
101077	Extrusion, inside main door trim
200967-01	Trim ring, plastic, 18"x30" stationary window
200968-01	Trim ring, plastic 30"x30" stationary window
201675-01	Trim ring, inside, 30" stack window
201676-01	Trim ring, stack window, 18"
201578-01	End cap trim ring, panoramic window (goes next to end bow)
201579-01	Trim, panoramic window, bottom, RS
201580-01	Trim panoramic window, bottom, CS
201581-03	Trim, panoramic window, upper, RS
201581-04	Trim, panoramic window, upper, CS
201578-01	End cap, trim ring, white
201391	"U" trim, flexible, panoramic window
203225	Trim lok, white, for fixed window close outs
200514	Wheel well cover, interior, tandem
380737	Handle, grab, white molded

*For reference only: Please purchase adhesives locally.

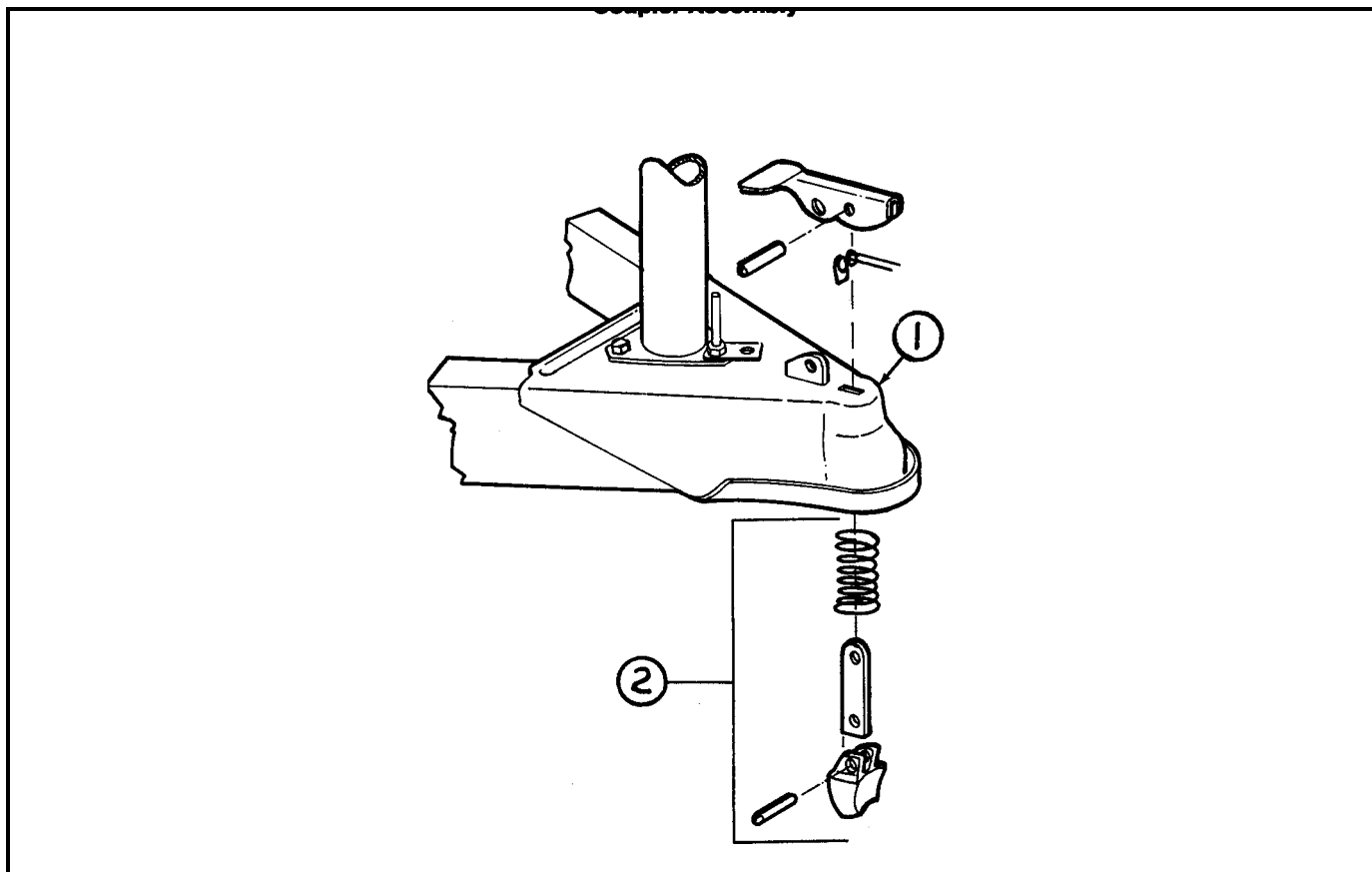
2001 30 FT 70Th ANNIVERSARY TRAILER

CHASSIS

A-FRAME

915256 A-frame complete for stand up LP bottles

400042 Coupler



1) 680343 Coupler assembly, 2 5/16"

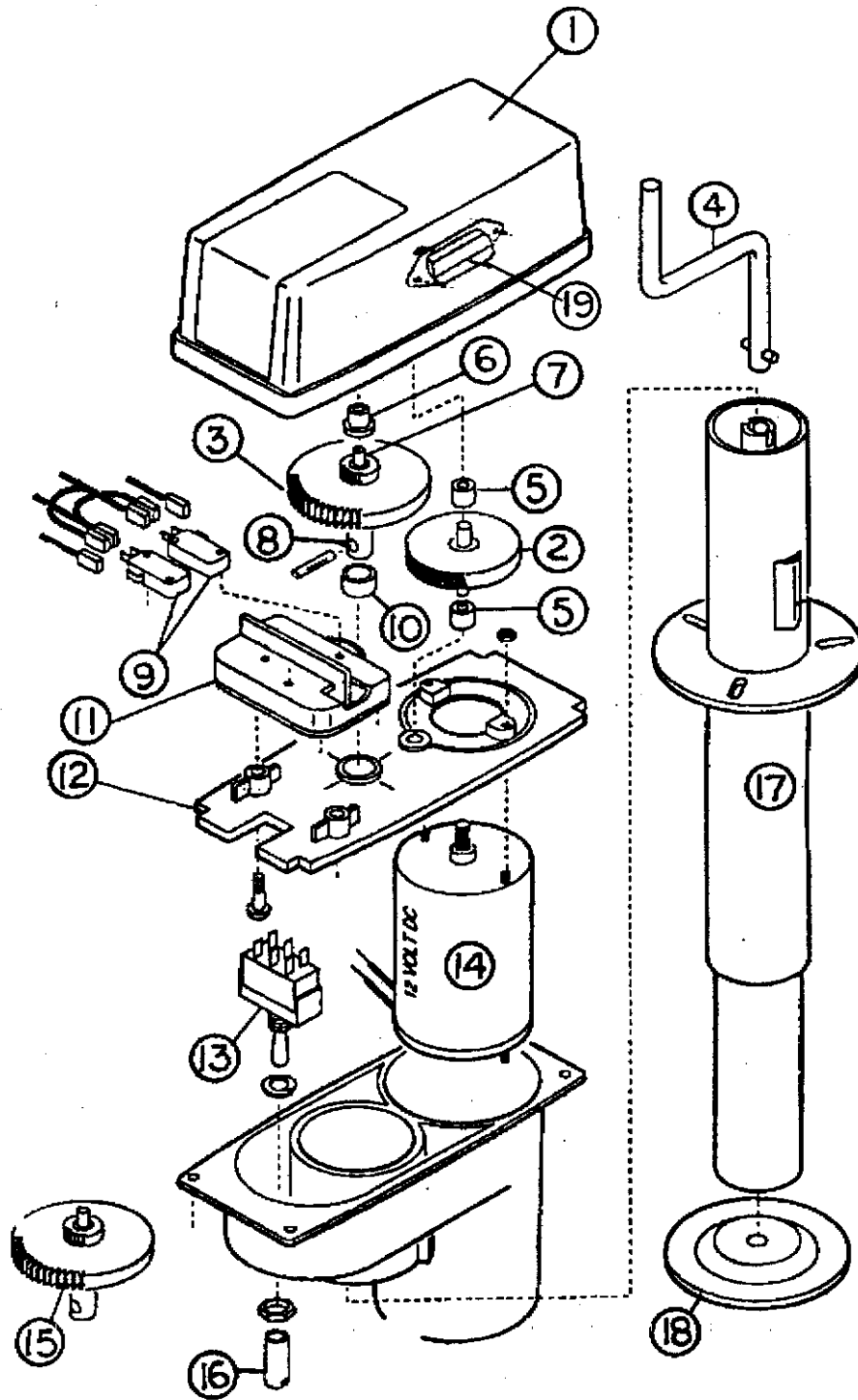
2) 680345 Repair kit, 2 5/16" coupler

0300026 Break away switch, Bargman

400407 Bracket, breakaway switch

(Continued)

2001 30 FT 70Th ANNIVERSARY TRAILER



See next page for P/N

2001 30 FT 70Th ANNIVERSARY TRAILER

CHASSIS

A-FRAME

511544	Power jack w/flag holder & light
012251	Power head less post
400945	5/16 clevis, safety hook
601544	E-Z Hose Carrier
1) 012198	Cover, Super Jack
2) 010051	Gear, fiber, Super Jack
3) 015551	Drive gear, Super Jack
4) 016199	Crank handle, manual, Super Jack
5) 080501	Bushing, bronze, Super Jack
6) 010055	Bushing, flange, Super Jack
7) 015552	Gear, pot/reed, Super Jack
8) 015553	Shaft, Super Jack
9) 081703	Micro switch, Super Jack
10) 080520	Bushing/bronze, 7/16, Super Jack
11) 012252	Limit switch assembly, Super Jack
12) 012200	Center plate, Super Jack
13) 081704	Switch, toggle, Super Jack
14) 016263	Motor, 12V, Super Jack
15) 011675	Drive gear assembly, Super Jack
16) 010069	Switch cover, Super Jack
17) 011631	Jack post, Super Jack
18) 410598	Foot pad #12231
19) 026503	Light, Jack

2001 30 FT 70Th ANNIVERSARY TRAILER CHASSIS

LP BOTTLE RACK

410504	LP bottle ring, lower
410566	LP bottle support plate w/rod holder
410641	LP regulator mounting bracket
410410	Hold down rod, threaded, for 40lbs bottle
100949	Bracket, bottle hold, cast aluminum
410238	"T" handle, threaded, cast aluminum

A-FRAME MISCELLANEOUS

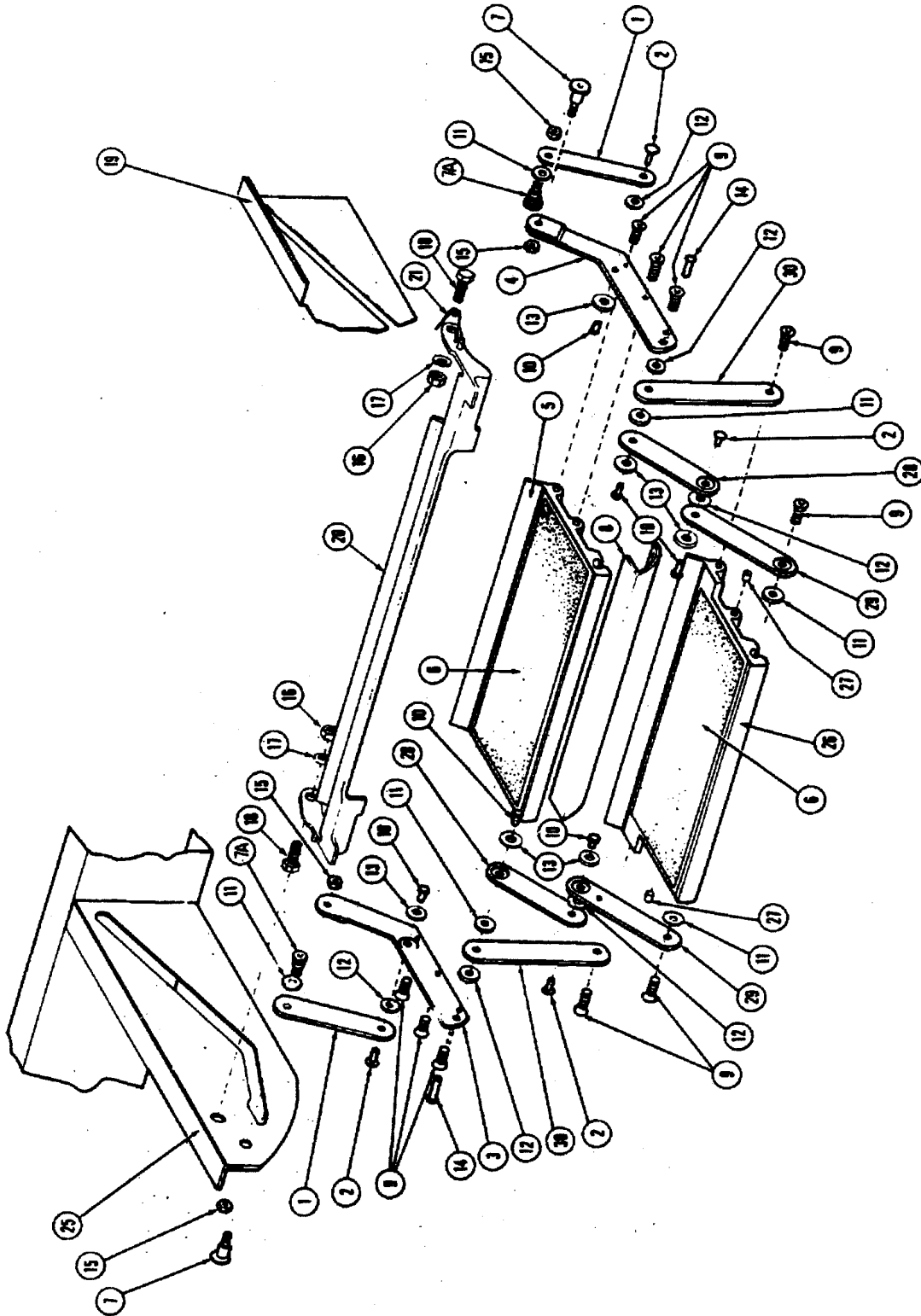
913619	Tool box assembly, "A" frame
410551	Lid, toolbox
381430	Twist lock, straight cam, tool box
381205-01	Hinge, aluminum, continuous

450414	"A" frame tire carrier
453620	Covers, A-frame, stainless steel

2001 30 FT 70Th ANNIVERSARY TRAILER

NOTES

2001 30 FT 70Th ANNIVERSARY TRAILER



See next page for P/N

2001 30 FT 70Th ANNIVERSARY TRAILER

CHASSIS

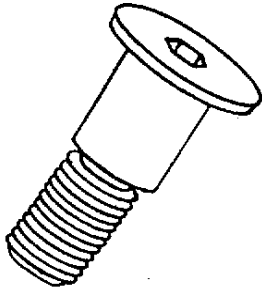
STEP

3440006 Double step assembly

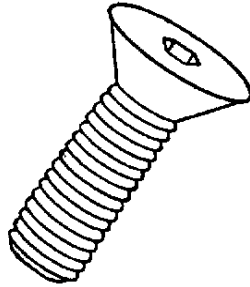
- | | |
|---------------|------------------------------|
| 1) 680213 | Arm, upper support |
| 2) 680214 | *Pin, hinge |
| 3) 680215 | Step bracket, left |
| 4) 680216 | Step bracket, right |
| 5) 680217 | Extrusion, step 20.5" |
| 6) 380069 | Safety tread |
| 7) 001152 | *Bolt, shoulder |
| 7a) 001145 | *Bolt, shoulder, 3/8" thread |
| 8) 680220 | Panel |
| 9) 680221 | *Screw, flat head |
| 10) 680222 | *Bolt, socket head |
| 11) 680223 | *Washer, bronze |
| 12) 680224 | *Washer, wave |
| 13) 680225 | *Washer, aluminum |
| 14) 680226 | *Pin, pivot |
| 15) 350005 | Nut, hex |
| 16) 350147-25 | Nut, Nylock |
| 17) 300005 | Washer, flat |
| 18) 345016 | Screw, machine |
| 19) 400454 | Outrigger, RH |
| 20) 100298 | Casting, step release |
| 21) 450433 | Spring, torsion |
| 25) 400455 | Outrigger, LH |
| 26) 410200 | Extrusion, step, 20.0" |
| 27) 410201 | *Bullet catch |
| 28) 400004 | Hinge arm, upper |
| 29) 400003 | Hinge arm, lower |
| 30) 400005 | Arm, lower support |

*Larger illustration on next page

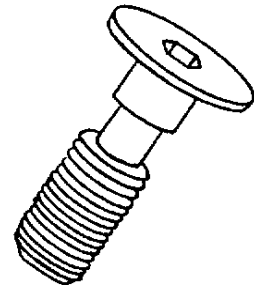
2001 30 FT 70Th ANNIVERSARY TRAILER



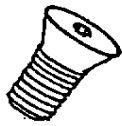
001152
1/2" shoulder w/3/8" -
shoulder bolt



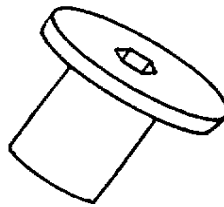
680221
3/8-16 x 1, flat
head allen, screw



001145
3/8-16 thread,
shoulder bolt



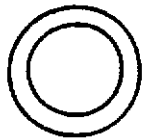
680222
flat head allen
socket screw



680226
pivot pin



680214
hinge pin



680223
brass washer



680224
wave washer



680225
alum. washer

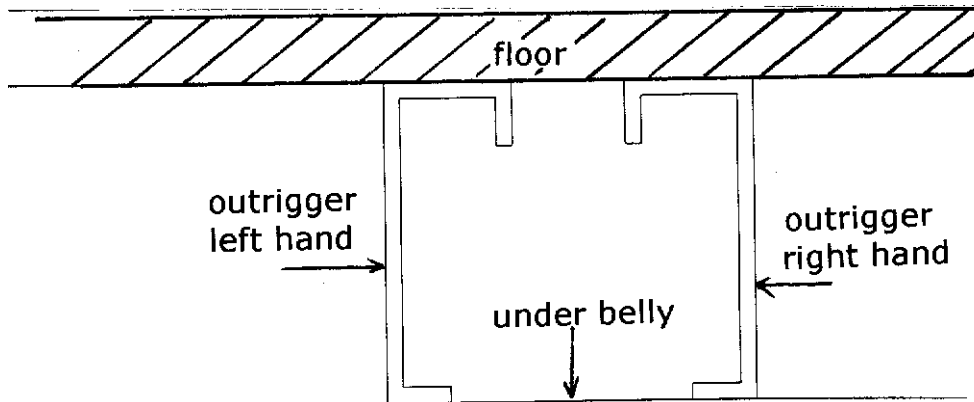


410201 bullet catch

2001 30 FT 70Th ANNIVERSARY TRAILER

CHASSIS OUTRIGGERS

410524	Step outrigger assembly, forward
410523	Step outrigger assembly, aft
410497	Outrigger, pierced, RH
410498	Outrigger, pierced, LH
410500	Outrigger, standard, LH
410499	Outrigger, standard, RH
410501	Outrigger, solid, RH, notched
410502	Outrigger, solid, LH, notched
410706	Outrigger, power cord compartment, RH
410707	Outrigger, power cord compartment, LH



CHASSIS COVERING

114679	Alum. under belly .019" x 65.75, coil
101131	Alum. under belly .024" x 22.50", coil
101131-01	Alum. under belly .024" x 22.5", coil, Pewter (covers from under belly to floor line)
200543	Banana wrap, CS front
200542	Banana wrap, RS front
203142	Bumper, rear center
201974-01	Bumper, rear corner, RS
201974-02	Bumper, rear corner, CS

(note: the rear roll out tray makes up part of the center section of the bumper)

CHASSIS

2001 30 FT 70Th ANNIVERSARY TRAILER

STABILIZING JACKS

510628 Stabilizing jacks, electric, A&E systems
510731 Control, leveler, A&E

BELOW FLOOR STORAGE

962828-01 Roll out tray assembly, rear
453144 Roll out tray
381556 Overhead door track, 2"
453159 Enclosure assembly, rear rollout tray
453156 "U" bar, roller support
381555 Ten ball roller w/stem
310028 Lynch pin, 1/4"
201909 Molding, black bumper trim

915145 Utility compartment assembly

914022 Power cord storage plate

601544 E-Z hose carrier, 46"

961251 Box, flag storage compartment

2001 30 FT 70Th ANNIVERSARY TRAILER

CHASSIS

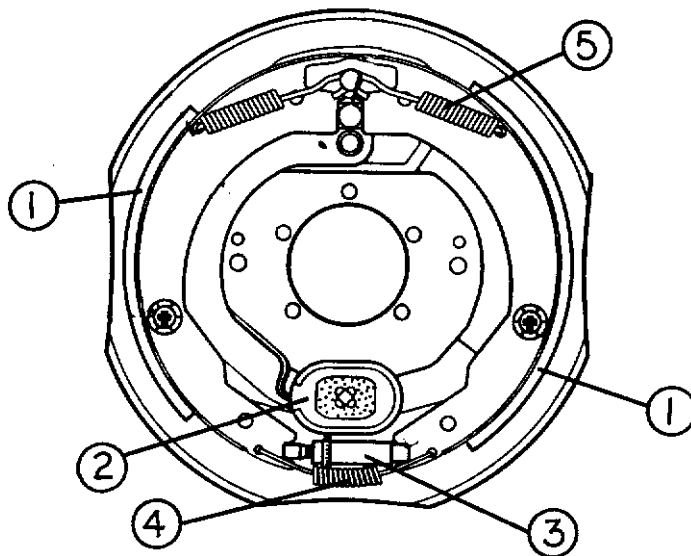
RUNNING GEAR

7440003	Axle 4400#
0220003	Shock absorber
410841	Tire and wheel assembly
400842	Tire ST 225/75 R15, LR "D" BW
400935	Wheel, aluminum
400936	Cover, center hub, polished aluminum
400923	Lug nut, acorn type
410009	Valve stem
410822-150	Wheel, steel, 15"
200844	Wheel well, tandem

2001 30 FT 70Th ANNIVERSARY TRAILER

12" BRAKES

3160121	Brake drum, 12", 6 lug
450659	Inner bearing, #25580
680364	Inner race, #25520
450658	Outer bearing, #LM67048
680365	Outer race, #LM67010
680370-100	Grease seal
3160347	Brake assembly, RH, 12" Dexter
3160348	Brake assembly, LH, 12" Dexter



1) 3160348-62	Shoe and lining kit (includes hold down spring and pin)
2) 3160348-65	Magnet kit
3) 3160348-63	Adjuster assembly
4) 3160348-64	Adjusting screw spring
5) 3160348-61	Retractor spring

Table of Contents

SECTION II

D through E

DECALS/EXTERIOR TRIM.....	II-1
DOORS/WINDOWS/AWNING	
Doors	II-2
Windows/Stone guard	II-4
Awning	II-5
DRAPES/BLINDS/VALANCES	II-6
ELECTRICAL	
110 volt.....	II-10
12 volt	II-11
Interior lights/switches.....	II-12
Exterior lights & reflectors	II-13
ENTERTAINMENT	
Radio/Antenna.....	II-14

2001 30 FT 70Th ANNIVERSARY TRAILER

EXTERIOR TRIM

114328	Extrusion, belt line molding
201912	Molding, belt line insert, chrome
114417	Casting, belt line close out
114460	Extrusion, rub rail
201763-01	Molding, rub rail insert, chrome
114466-01	Casting, close out, rub rail, angled, RH
114466-02	Casting, close out, rub rail, angled, LH
114465-01	Casting, close out, rub rail, RH
114465-02	Casting, close out, rub rail, LH
381753-02	End clip, rub rail, gray
684936	inner wheel well trim, tandem axle
684937	outer wheel well trim, tandem axle
386067-02	Medallion, 4.375, Lt. blue, 70th anniversary
386070	Logo, "Airstream", Custom Gold, 32"
386071	Logo, 70 th Ann., 1 3/4" x 30 3/4", Gold
386072	Decal, Anniversary tape w/gold stripe, 3 1/2"
386073-01	Decal, die-cut, Anniversary graphics, CS
386073-02	Decal, die-cut, Anniversary graphics, RS

2001 30 FT 70Th ANNIVERSARY TRAILER

DOORS/WINDOWS/AWNING

(Hardware such as hinges, locks and latches are located in the **hardware** section of this book.)

DOORS

110067-05	Main door assembly
114652	Jamb, main door, pre-formed
114653	Frame, main door, pre-formed
114448-02	Skin, exterior, upper main door
114449-02	Skin, exterior, lower main door
114475	Skin, inner, vinyl clad
114363	Drip cap, main door
365232	Seal, main door
381704	Seal, upper main door, (above 365232)
114654	Screen door assembly
114561-01	Panel, slider, screen door
114648-01	Kick panel screen door
203287	Close out, plastic, screen door w/ dead bolt
32226W	Guard, screen door
380079	Screen, gray
200518	Spline, gray, screen insert
365013	Gasket, screen door, foam tape
922243	Door, refrigerator access
104417	Jamb, refrigerator access door
104439	Louvered panel, refrigerator access door
203225	Trim, flexible, white, inner doorjamb
386068	Medallion, 3" logo
100679-01	Side access door assembly
365035	Seal, side access door
114648	Kick panel, screen door
921159-01	Trunk door assembly, rear, twin only
114675	Jamb, rear trunk door
365035	Seal, access door
380774-02	Hinge compartment doors

(continued)

2001 30 FT 70Th ANNIVERSARY TRAILER

DOORS/WINDOWS/AWNING

(Hardware such as hinges, locks and latches are located in the **hardware** section of this book.)

DOORS

922288-01	Door, side access, long, twin only
104833	Jamb, long side access door, twin only
114467-01	Door panel, outer, battery box door
114468	Door panel, inner, battery box door
114464	Casting, battery box door jamb
380238	Support cable, battery box door
200855	Battery box tray
381500	Hinge
114496-02	Door, utility compartment
114496-01	Door, power cord compartment
690209	Cover, brushed aluminum, Atwood water heater
670274-06	Cover, Hydroflame furnace
601194	Water fill door w/pocket & lock
114219	Door, flag storage compartment

2001 30 FT 70Th ANNIVERSARY TRAILER

DOORS/WINDOWS/AWNINGS

(Hardware such as hinges, locks and latches are located in the **hardware** section of this book.)

WINDOWS

371346-02	Window, flat, front center
372088	Window, panoramic, front RS
372089	Window, panoramic, front, CS
371348-02	Window rear escape w/red handles
381380	Window, opening, 30" tall
371324-02	Window, curved 30" opening
371270-01	Window, curved, 30" stacked
371323-01	Window, curved 18" opening
371269-01	Window, curved 18" stacked
371319-05	Window, main door
371319-03	Trim ring, inside, main door window

WINDOW SCREENS

371349-01	Screen, rear escape
371347-01	Screen, front window
372175-02	Screen, 30" opening window
372174-01	Screen, 18" opening window
372215	Screen, 30" tall opening
380230-03	Knob, window arm, Silver
380230-04	Knob, window arm, Red
381088	Handle, latch, Red

2001 30 FT 70Th ANNIVERSARY TRAILER

DOORS/WINDOWS/AWNINGS

(Hardware such as hinges, locks and latches are located in the **hardware** section of this book.)

AWNINGS

702662-70	Awning, Zip-Dee, 21'9" Patio, 70 th Anniversary
381532-01	Hardware, patio, satin
702622-05	Center support CS-05
702662-06	Awning, 3', blue
702662-20	Awning, window, blue, 52 5/8"
703122-02	Cover, slide out, 7' 6.5"
385577	Wear tape, clear, 3½" wide
110102	Rock guard, center only
381021	Latch, draw type, flexible
685275-101	Rock guard, CS front
685275-102	Rock guard, RS front
32226W	Screen door guard

2001 30 FT 70Th ANNIVERSARY TRAILER

DRAPES/BLINDS/VALANCES

DRAPES

998056-01	Drape, rear, 4-16 pleat, 34, 31D, 30D, 28, 25Ft
998134-01	Drape, rear bedroom, side, 2-9 pleat, 34, 31D,30D
998134-04	Drape, 30"bedroom, 2-9 pleat, 31T, 30T
998057	Drape, bedroom, 2-7 pleat, 31T , 30T, 28, 25D
998053-01	Drape, dinette, 2-8 pleat & 1-5 pleat, 34', 31', 30'
998053	Drape, galley, 2-2pleat, 34', 31', 30', 28, 25ft.
998050-01	Drape, front, 4-16 pleat, 34', 31', 30', 28, 25ft.
998134-05	Drape, lounge, RS, 30", 2-9 pleat, 31', 30'
998135	Drape, lounge, CS, 30", 2-6 pleat, 34, 31', 30', 28

2001 30 FT 70Th ANNIVERSARY TRAILER

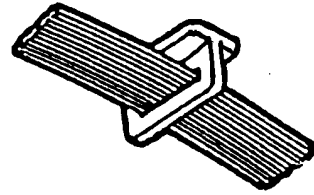
DRAPERY TRACK AND BRACKETS



101220
Bracket, curtain
stand off



101217
Track, curtain



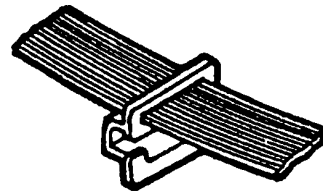
700044
Glides, w/elastic
"T" type



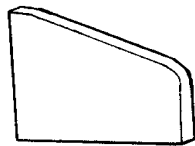
11402
Bracket, curtain
stand off



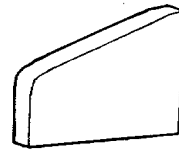
101225
Bracket, curtain
stand off



700045
Glides, w/elastic
"G" type



200785
End, curtain track, LH



200784
End, curtain track, RH



101005
Bracket, curtain standoff

2001 30 FT 70Th ANNIVERSARY TRAILER

DRAPES/BLINDS/VALANCES

964107-01	Valance, rear bedroom, 34, 31, 30ft. double
964106-02	Valance, bedroom, 52", CS, 34, 31, 30ft. double
964106-03	Valance, bedroom, 52", RS, 34, 31, 30ft. double
964106-04	Valance, bedroom, 38", CS, 30, 31ft. twins
964106-05	Valance, bedroom, 38", RS, 30, 31ft. twins
964105-01	Valance, galley, 24", 30, 31ft., twin & double
964104-09	Valance, lounge, 33" RS, 30" S\O TT
964108-03	Valance, dinette, 75.50 w/3¼" radius, 30" S\O TT

2001 30 FT 70Th ANNIVERSARY TRAILER

DRAPES/BLINDS/VALANCES

BLINDS

702968-01	Shade, pleated, day/night	17.12" x 22.5", Ascot
702968-08	Shade, pleated, day/night	28.87" x 33", Ascot
702968-16	Shade, pleated, day/night	47.5" x 25", Ascot
702968-02	Shade, pleated, day/night	17.12" x 33", Ascot
702969-07	Shade, pleated, day/night	28.87" x 22.5", Ascot
702969-16	Shade, pleated, night,	47.50" x 25" , Ascot

2001 30 FT 70Th ANNIVERSARY TRAILER

ELECTRICAL

110 VOLT

510634	Power cord, 120 volt, 36ft.
511336	Breaker box, Square D,30amp
510662	Breaker,20 amp, double, Square D 2020
510663	Breaker,30amp, Square D, 0130
510661	Breaker,20 amp., Square D GFI
500563-01	Receptacle,15-amp,T & B type
500903	Duplex receptacle, ivory
500785	Outlet, duplex, brown T & B
500169	Housing, weatherproof receptacle
510122	Cover plate, weatherproof receptacle
500903	Duplex, receptacle, Ivory
510315	Switch & receptacle box
201017-01	Cover, outlet, white
510676-01	Outlet, exterior, gray
510514	Switch, priority, microwave to water heater (CSA)
510606	Receptacle box, priority switch
500385	Switch cover, ivory
511426	Converter, electronic, 55 amps
510626	Switch, master disconnect
510627	Face plate, disconnect switch
511023	Tester, circuit analyzer (loose item)

2001 30 FT 70Th ANNIVERSARY TRAILER

ELECTRICAL

12 VOLT

511132	Battery, deep cycle, lead acid
500886	7-Way cable w/plug
511411	Junction box, 7-way cable
0300027	Break away switch, Bargman
510655	Breaker panel, 12 volt
510781	Detector, smoke
511309	Detector, LPG
511152-103	Monitor panel, deluxe
511018	Monitor panel, tank harness
510807	Outlet, 12 volt
511121	Mounting plate, 12 volt receptacle
500842	Light, fluorescent, 16 Watt, 12 x 5.5"
680084	Bulb, fluorescent, #F15T8-CW
500960-01	Light, fluorescent, recessed, 14.75"
680084	Bulb, fluorescent, #F8T5-CW
511248	Light, incandescent, single
511249	Light, incandescent, double
50085-02	Bulb, incandescent, #1141
511534	Dual, coax, cable plate, white

2001 30 FT 70Th ANNIVERSARY TRAILER

ELECTRICAL

12 VOLT

511298	Wall lamp, 12 volt-over rear bed
510689	Bulb, incandescent, #1076
511298-02	Shade, wall lamp, round
511298-01	Shade, wall lamp, rectangular
108876	Light, fluorescent, dual bulb (square, over vent)
500841	Dual fluorescent bulb w/ballast
201538	Lens, ceiling, square, front ceiling light
500956	Light, wardrobe, w/switch
681924	Bulb, wardrobe light #581
511410	Light, shower, incandescent
50085-02	Bulb, incandescent, #1141
511297	Light, halogen, reading w/switch
511137-100	Bulb, wedge base, JC-10
510868-03	Switch panel, 4-gang, white
381541-05	Switch, bath ceiling vent
511327	Switch body w/rocker, 1 gang, white
511328	Cover switch, one gang white
511566-01	Cover, switch, 2 gang
511567-01	Switch body w/rocker switch 2 gang
500435	Switch, DPDT, Hi-Lo
500432	Switch, SPST, flood light
500431	Switch, SPST, step light
510654-01	Jack, TV w/12 volt outlet
104619	Mounting plate, exterior telephone/TV jack
452981	Phone jack, protective plate
510614-01	Jack, TV, 12-volt white

2001 30 FT 70Th ANNIVERSARY TRAILER

ELECTRICAL

EXTERIOR LIGHT AND REFLECTORS

500564	Step light, #8142 w /hail shade
510732	Utility light, by door and on front
500092	Flood light
511163	Light, compartment
510658	Switch w/weather proof boot
114346-01	Bezel, tail light casting, RS
114346-02	Bezel, tail light casting, CS
201929-01	Close out, tail light, RS
201929-02	Close out, tail light, CS
511003-02	Light, red stop, tail and turn
511003-03	Light, red w/clear center (back-up)
510111	Clearance light, red, Signal Stat
510112	Clearance light, amber, Signal Stat
511294	Light, license plate
500095	Reflector, red, rectangular
500096	Reflector, amber, rectangular
510446	Reflector, red, stick-on
511375	Telephone jack, exterior

2001 30 FT 70Th ANNIVERSARY TRAILER

ENTERTAINMENT

511371	Radio, AM/FM/Cassette w/CD control, Sony XR-C 5120
511048	Speaker set, Coustic-HS-402
510788-01	Antenna, TV, Winegard
114396	Trough, TV antenna
510788-03	Amplifier, antenna, Winegard
510788-04	Hardware, interior, Winegard
510788-107	Gear, elevating, plastic, Winegard
510788-118	Handle, directional, Winegard
510788-125	Handle, directional kit, Winegard
500484-04	Antenna lead & extension, 48"
510616	Connector, "F", coax
510623	Connector, male-to-male, coax
510610	Antenna, Radio, side mount

2001 30 FT 70Th ANNIVERSARY TRAILER

SECTION III-EXCELLA

F through H

FASTENERS (common fasteners available locally are not listed)

Rivets..... III-1

FLOOR COVERING

Carpet..... III-3

Tile, Bathroom..... III-3

Mats..... III-3

FURNITURE

Interior doors III-4

Mirrors III-5

Drawer/Face/Boxes III-6

Rear bedroom..... III-7

Bath..... III-9

Galley..... III-11

Lounge III-13

HARDWARE

Exterior locks/hinges III-14

Window hardware III-18

Interior drawer slides/hinges latches ... III-20

Bath accessories/table/drawer slide ... III-24

Misc. III-25

Awning hardware III-28

2001 30 FT 70Th ANNIVERSARY TRAILER

*FASTENERS



325043
Rivet, buck type
dia. 1/8"
length 1/4"
(hard)



325000-01
Rivet, buck type
dia. 1/8"
length 1/4"
anodized clear



325000-03
Rivet, buck type
dia. 1/8"
length 1/4"
anodized white



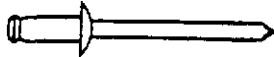
325001-01
Rivet, buck type
dia. 1/8"
length 5/16"
anodized clear



325002-01
Rivet, buck type
dia. 1/8"
length 3/8"
anodized clear



325004-01
Rivet, buck type
dia. 1/8"
length 1/2"
anodized clear



330127-03
dia. 1/8"
grip range .063-.125
aluminum body
aluminum mandrel

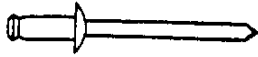


300101
1/8" I.D.
washer, aluminum

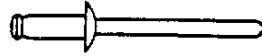
*Common bolts and screws readily available at local hardware outlets have not been listed.

2001 30 FT 70Th ANNIVERSARY TRAILER

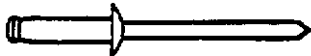
*FASTENERS



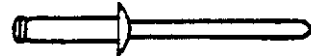
330126-02
pop rivet, dia. 1/8"
grip range .126-.187
S.S. body and mandrel



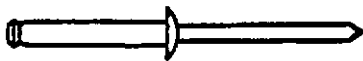
330126-03
pop rivet, dia., 1/8"
grip range .126-.250
S.S. body and mandrel



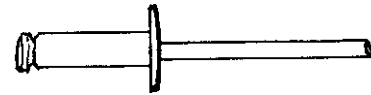
330127-050
rivet, pop
dia. 1/8"
grip range .251"-.312"
aluminum body
aluminum mandrel



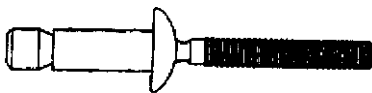
330128-05
rivet, pop
dia. 1/8"
grip range .251"-.312"
aluminum body, white
aluminum mandrel



330127-080
rivet, pop
dia. 1/8"
grip range .325"-.565"
alum. body & mandrel



330038
rivet, pop
dia. .150" (#20 bit)
grip range .126-.250
alum. Body & mandrel
(used-screen door hinge)



325103
dia. 1/4"
grip range .080-.325
SS body
steel mandrel

*Common bolts and
screws not listed.

2001 30 FT 70Th ANNIVERSARY TRAILER
FLOOR COVERING

702793-02	Carpet, Regal Roman Sands
701538	Carpet, Velour-compartment liner
702979	Flooring, vinyl, Banker Gray, roll out tray
700173-01	Pad, carpet, ½" thick
114724	Trim, carpet, edging, Z-bar, aluminum
703037	Flooring, laminate, Capisto Sand
365252-02	Adhesive, laminate floor, 16oz. tube
801291-03	Trim, laminate floor, Capisto Sand
702549	Matt, entrance, w/Airstream logo
702665	Rug, cushion, non-slip

2001 30 FT 70Th ANNIVERSARY TRAILER

FURNITURE

CABINET DOORS, RAISED PANEL MAPLE

		Width x height (inches)
800597-015	Raised panel door	10.50 x 22.00
800597-125	Raised panel door	10.50 x 26.25
800597-095	Raised panel door	11.00 x 29.75
800597-075	Raised panel door	12.25 x 21.00
800597-105	Raised panel door	12.25 x 34.00
800597-155	Raised panel door	13.00 x 25.75
800597-495	Raised panel door	15.50 x 13.00

MISCELLANEOUS DOORS

962066	Door, slider	
702306-02	Shower door gold, 26" opening	
702306-107	Drip cap, shower door	
381100	Sliding door guide, shower door	
702681-01	Door, foldette, 36" x 73", beige	
702681-03	Door, foldette, 46" x 73", beige	
381581	Strap, clear plastic, foldette door	
961957-01	Door, Map (chair storage cabinet)	

CABINET DOOR FRAMES FOR MIRRORS

		width x height inches
800557-235	Door frame	10.50 x 32.50
800557-175	Door frame	12.25 x 34.00
800557-035	Door frame	14.50 x 25.00
800557-155	Door frame	19.00 x 60.00

2001 30 FT 70Th ANNIVERSARY TRAILER

FURNITURE

MIRRORS

371262-13	Mirror, safety glass	9.38 x 31.12
372210-11	Mirror, beveled edges	7.75 x 19.50
372213-10	Mirror, beveled	7.62 x 26.62
372203-04	Mirror, safety	14.0 x 36.00
372210-02	Glass, beveled, safety	11.60 x 22.12
372210-24	Glass, beveled, safety	11.62 x 22.12

372213 Trim, mirror, bright chrome

365239 *Foam pad, non-skid, 1/16" x 1/4" x 1"
(used between mirror and door frame)*

2001 30 FT 70Th ANNIVERSARY TRAILER

FURNITURE

DRAWER FACE

width x length (inches)

800599-585	Drawer face	4.75 x 21.50
800599-405	Drawer face	7.00 x 10.25
800599-565	Drawer face	7.00 x 16.00
800599-385	Drawer face	7.00 x 21.50
800599-215	Drawer face	7.00 x 23.00
800599-235	Drawer face	8.00 x 21.50
800599-465	Drawer face	8.00 x 17.25
800599-595	Drawer face	9.75 x 12.00
800599-445	Drawer face	10.25 x 13.50
800599-575	Drawer face	17.25 x 13.00

DRAWER BOX

height x width x length (inches)

964906-02	Drawer box	2.75 x 19.50 x 18.00
964907-13	Drawer box	6.00 x 18.00 x 15.00
964910-13	Drawer box	5.00 x 14.00 x 19.69
964910-03	Drawer box	5.00 x 19.50 x 18.00
964910-18	Drawer box	5.00 x 17.00 x 14.00
964908-01	Drawer box	8.00 x 17.50 x 26.00
963338-01	Drawer box, angled, RS rear wardrobe	
963338-02	Drawer box, angled, CS rear wardrobe	
963749	Drawer box assembly, "W" rear bed	
963759	Drawer box assembly, "J" rear bed	
201016	Drawer, plastic, 16"x22"	

2001 30 FT 70Th ANNIVERSARY TRAILER

FURNITURE REAR BEDROOM-TWIN

963506-70	Roof locker, rear center
963498-005	Face frame, rear center roof locker
962227-70R	Twin bed assembly, RS
962227-70C	Twin bed assy., CS
998101-01	Bed-end assy., twin, fabric covered
965209-70	Night stand assembly, center rear
963210-005	Face frame, rear center nightstand
965211-70	Top, rear center nightstand
963671-70	Roof locker, rear, CS or RS
963670-005	Face frame, rear side roof locker, 30, 31 & 34ft.
963827-70L	End cap, roof locker, Left hand
963829-025	Face frame, R/L end cap, LH
963827-70	End cap, roof locker, right hand
963829-015	Face frame, R/L end cap RH
962355-70R	Hanging wardrobe assembly, CS
986180-015	Face frame, hanging wardrobe
962355-70C	Hanging wardrobe assembly, RS
986180-015	Face frame, hanging wardrobe
801206-015	Molding FL Shoe, 43" Ends Map

2001 30 FT 70Th ANNIVERSARY TRAILER

FURNITURE

REAR BEDROOM-DOUBLE

963340-70R	Wardrobe assembly, RS rear, 30, 31, 34 FT.
962207-015	Face frame, RS rear wardrobe
201959-01	Pan, top shelf, black ABS, RH
963340-70C	Wardrobe assembly, CS rear, 30,31 & 34ft.
962208-015	Face frame, CS, rear wardrobe
201959-02	Pan, top shelf, black ABS, LH
963337-70	Rear roof locker, center, 30, 31 & 34ft.
963336-015	Face frame, rear center roof locker
963747-70	Bed assembly, double
986681	Head board assembly, double bed
381241	TV shelf w/mirror

2001 30 FT 70Th ANNIVERSARY TRAILER

FURNITURE

Bathroom, 30ft. S/O trailer

800894-01	Panel, fed, bedroom
800894-02	Panel, aft, shower
800984-03	Panel, fed, shower
801127-01	Panel, aft, lavy
801127-02	Panel fwd, shower
801127-03	Panel, aft ,refer
963664-005	Stile, aft, bath
962161-015	Face frame, shower
800815-025	Stile aft, bath panel end
963656-005	Header aft, sliding door
963657-005	Header, fwd, sliding door
962066	Door assy., slider aft
961413-16	Door, slider assy., 20.5" x 74"
203081	Shower stall, 2 pcs.
703206-02	Shower door, Gold 26" opening
961921-70	Lavy, cabinet assy.
961890-015	Face frame, lavy
961891-015	Face frame lavy, aft
965217-01	Top assy., Corian
963753	Med. Cabinet assy., upper
962170-015	Face frame med., upper
962175-70	Wardrobe assy.
962162-015	Face frame W/R aft, CS
963163-015	Face frame, WRD fwd
800984-05	Panel, fwd, wardrobe
964945	Lift up assy, wardrobe
381163	Door knob

2001 30 FT 70Th ANNIVERSARY TRAILER

961899-70	Medicine cabinet, lower section
961897-015	Face frame, med., cabinet, lower
381581	Strap, clear plastic
700811	Button cap
700812	Button bottom
703106	Border-VSI #TF71661
964945	Lift up shelf assembly, wardrobe

2001 30 FT 70Th ANNIVERSARY TRAILER

FURNITURE GALLEY, 30 S\O

965303	Galley assy., fwd
965305-00Z	Face frame galley fwd
965301-01	Top assy., galley
964973-01	Sink cover, Corian
964998-70	Galley assy. cook top
965017-005	face frame, cook top
200980-01	Tray, silverware, 9" x 13"
381708	Waste basket
963761-70	Locker, galley assy.
962167-015	Face frame, galley R/L
963793-70	Locker assy, dinette/large
963764-015	Face frame, Din. R/L
962225-70	Spice cabinet assy.
965224-015	Face frame, spice cabinet
963680-70	Refer cabinet assy.
963724-015	Face frame refer
801127-08	Panel, fwd refer
963828-70	End cap assy., galley R/L
963829-025	Face frame, R/L end cap
965030-70	Microwave cabinet assy.
965029-005	Face frame, microwave Std
965319	Top, microwave cabinet assy.
962440-07	Molding, microwave cabinet top
964280	Microwave cabinet, edge molding

(continued)

2001 30 FT 70Th ANNIVERSARY TRAILER

FURNITURE

GALLEY, 30 EXCELLA

965314-01	Dinette seat assembly, LH
965315-01	Base assy, dinette seat, LH
965316-01	Back assy., dinette, LH
965317-01	Upholstered back assy.
964449-01	Cushion support, dinette, LH
965314-02	Dinette seat assy-RH
965315-02	Base assy, dinette, RH
965316-02	Back assy., dinette RH
965317-02	Upholstered back assy., RH
964498-01	Cushion support, dinette, RH
964334-01	Flex spring seat
703125-02	Top-dinette seat, urethane buckskin
963793-70	Dinette table assy.
963673	Dinette table
962177-035	Table leg, hardwood
963990-005	Magazine rack
963991-005	Spice rack
964335-70	Galley lift-up shelf
381507	Clock, Quartz-w/gold rim
800631-005	Hand rail, 23" long

2001 30 FT 70Th ANNIVERSARY TRAILER

FURNITURE

LOUNGE, 30 EXCELLA

*703120-70 Sofa, jack knife, 74in., 1000 style, 70th ann.
963400-01 Arm rest support assembly, RS
963400-03 Arm rest support assembly, CS
963398-02 Armrest cushion assy., CS notched
963398-01 Armrest cushion assy., RS
801027-01 Panel, kill switch

961959-70 Writing table/chair storage cabinet
961955-015 Face frame, chair storage
961956-015 Frame end, maple w/table/C. storage
961957-015 Door, maple, W. table chair storage

961958-005 Top, lift-up/writing table cabinet
962423-005 Top assy., writing table

963094-03 Door header panel

381553-70 Chair, folding, Zip Dee, w/logo, 70th Ann.

Changing the-(dash) number to:

320 =Golden Map

350 =Georgia Peach

470 =Mandalay Blue

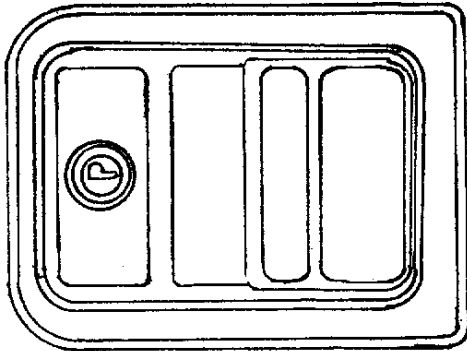
460 =Mystic Mint

379 = Mosaic Blue

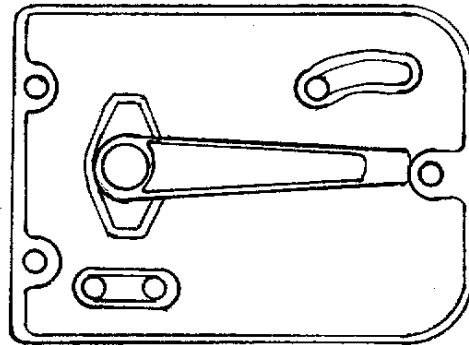
389 = Tropical Isle

2001 30 FT 70Th ANNIVERSARY TRAILER

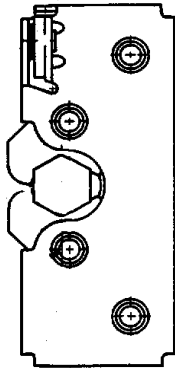
MAIN DOOR LOCK



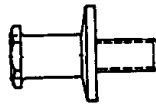
381547-01
Main door lock, outside
Housing



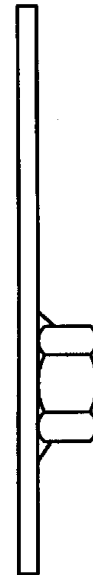
381547-02
Main door lock, inside
plate



381547-03
Double rotary
latch, main door



381547-04
Striker bolt w/washer
main door lock



381550
Plate, striker bolt
mounting

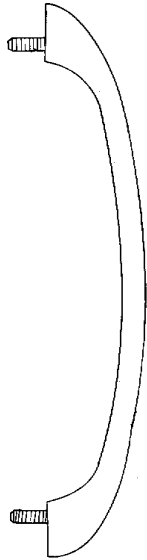
Not shown:

381547-05
453851

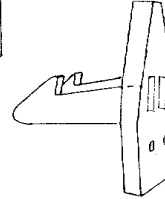
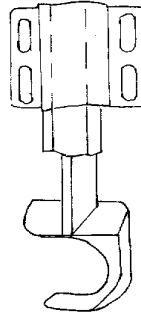
Screw package, main door lock
Tri-mark dead bolt

2001 30 FT 70Th ANNIVERSARY TRAILER

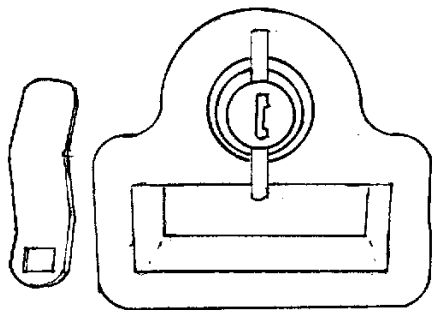
HARDWARE EXTERIOR LATCHES/LOCKS



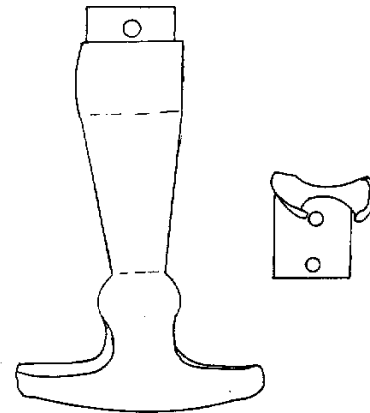
101171
Grab handle, main door



381454
Latch, screen door, Bullet



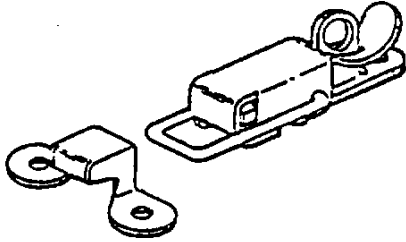
380770-101 Twist lock, chrome
380770-102 Twist lock, black



381021 Rubber T handle

2001 30 FT 70Th ANNIVERSARY TRAILER HARDWARE

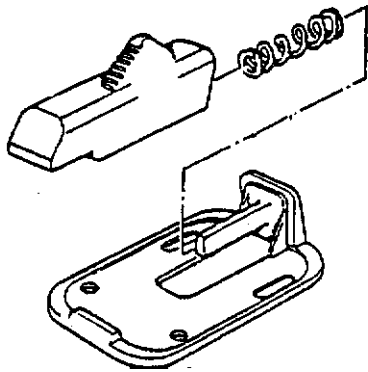
EXTERIOR LATCHES/LOCKS



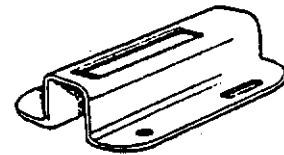
340023 Corbin catch
w/strike, battery box



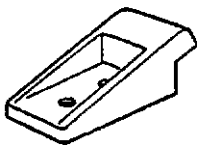
380067, Lock cam,
bumper lid



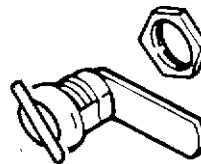
380291 Main door holdback,
(use w/housing #380290)



380290 Latch housing,
main door
holdback



201056 Catch, main door
holdback



381430 Twist lock,
straight cam

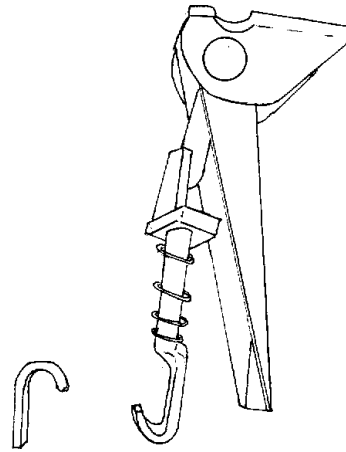
2001 30 FT 70Th ANNIVERSARY TRAILER

HARDWARE

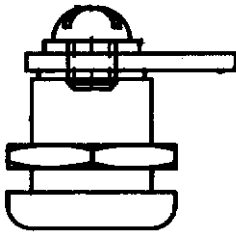
EXTERIOR LATCHES/LOCKS



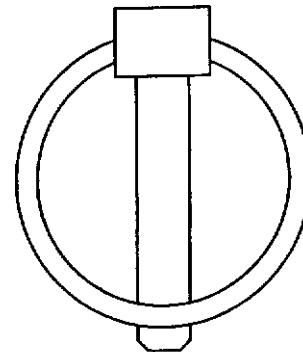
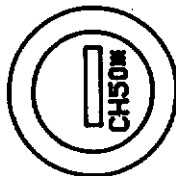
380004
Handle, screen door



380903 Latch w/strike
chrome, gas bottle cover



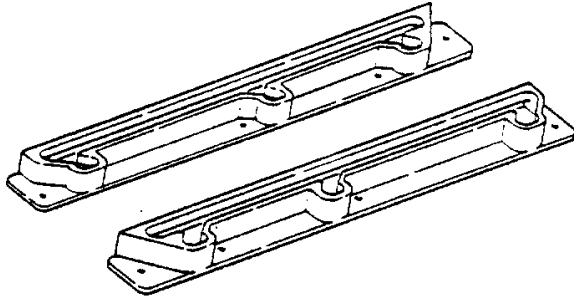
381397 Key cylinder
w/cam



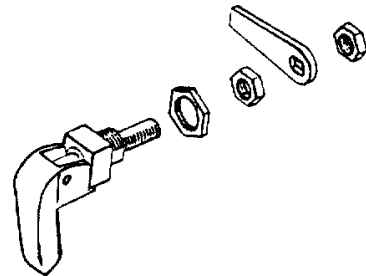
310028 Lynch pin
roll out storage
tray

2001 30 FT 70Th ANNIVERSARY TRAILER

HARDWARE WINDOW HARDWARE



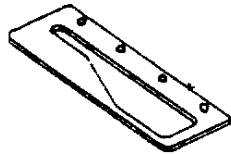
683975 Window guide, RH
683975-01 Window guide, LH



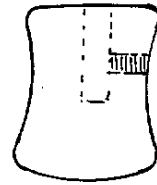
010020 Lower window latch
381088 Latch w/red handle



685123 Pawl,
window latch,
straight



685124 Striker
plate, window
latch



380230-03 Knob,
window arm
380230-04 Knob,
window arm, red

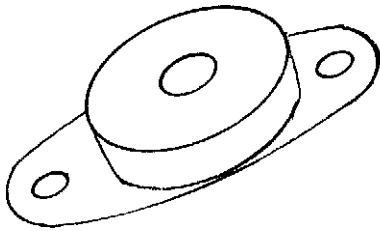
Misc. not shown:

0703-0001	Screw 8-32 x 1/2", black
0703-0010	Screw 8-32 x 1/2", stainless
0706-0003	Washer, flat, nylon, clear
0706-0004	Washer, flat, nylon, black
0802-0004	Screw cap, black
0802-0005	Snap cap washer, clear

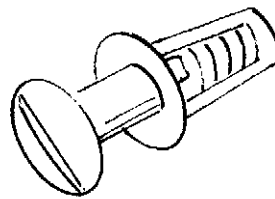
2001 30 FT 70Th ANNIVERSARY TRAILER

ROCK GUARD

- 685363 Slip joint hinge
- 683960 Support arm, rock guard
- 683959 Bracket, arm support
- 114749 Hinge "Y" assembly
- 114750 Hinge "J" rock guard
- 381021 Draw latch, black rubber



685359
Rubber receptacle
1/4 latch, South-co



685342
Stud, 1/4 turn latch
South-co



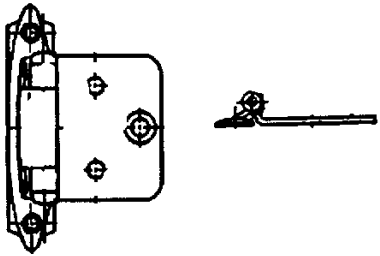
685362
Retaining ring
1/4 turn stud

used on stone guard and wrap protector

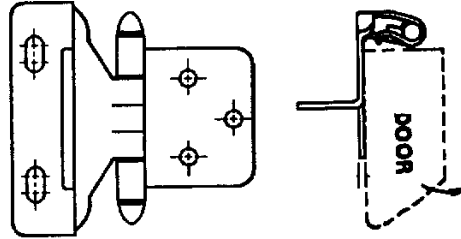
2001 30 FT 70Th ANNIVERSARY TRAILER

HARDWARE

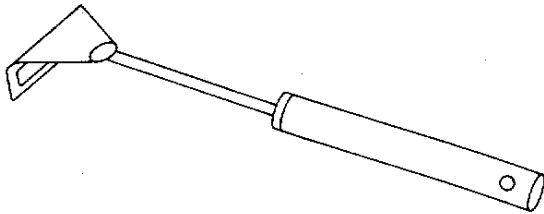
INTERIOR LATCHES/HINGES



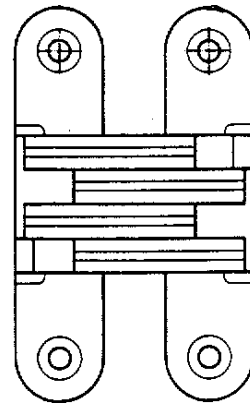
381601 Hinge, antique brass



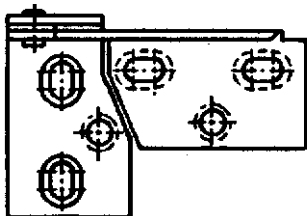
381602, Hinge, semi-concealed antique brass(used on front & rear roof lockers)



381147 Door support spring loaded

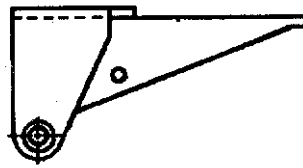


380040 Soss hinge credenza table



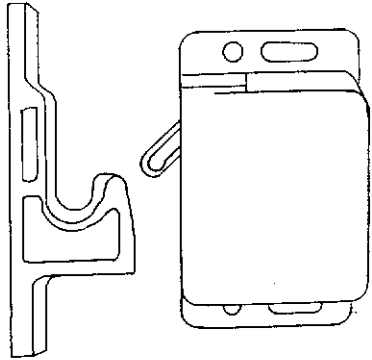
385935-01

Hinge, pivot, chrome for bath mirror

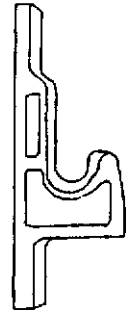


2001 30 FT 70Th ANNIVERSARY TRAILER

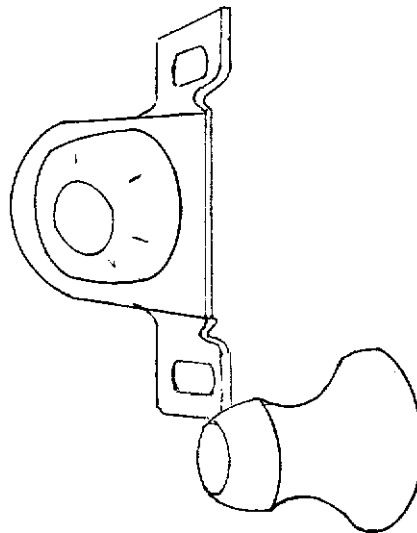
HARDWARE INTERIOR LATCHES/HINGES



381228 Grabber door latch
w/catch, 10 lb. Rating
381228-01 Grabber door latch
w/catch, 3lb. rating



381228-100
Catch only,
grabber door latch



381074 Bull dog door catch

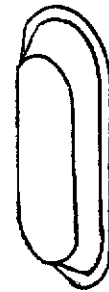
2001 30 FT 70Th ANNIVERSARY TRAILER

HARDWARE

INTERIOR LATCHES/HINGES



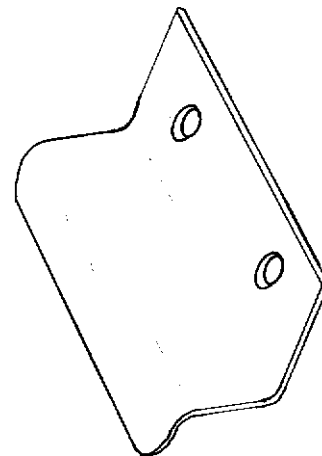
201427 Finger pull,
light brown



381603 Pull, three finger
Antique brass



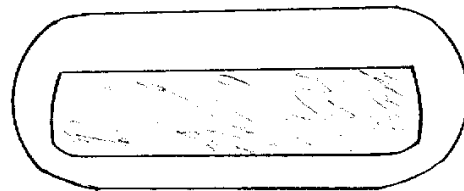
381444 Hatch pull



385940-02, Mirror pull, chrome



381599 Pull handle,
drawer/door, antique-brass



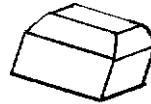
381576 Pull handle,
brass

2001 30 FT 70Th ANNIVERSARY TRAILER HARDWARE

INTERIOR LATCHES/HINGES



360012 Bumper, rubber
white, stick-on, cylindrical



360016 Bumper rubber
gray, square 3/8x3/8

360012-01 Bumper, rubber
brown, stick-on, cylindrical



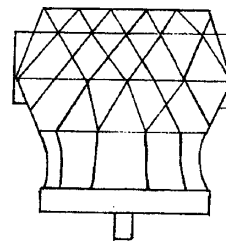
195329-220 Bumper, rubber
brown, stick on, oval



381612 Clip, mirror-
retainer



381681 Door handle,
brass/acrylic



381726 Knob, door,
Acrylic w/ brass base

Not shown

203138-03 Extrusion, plastic, wall beige

2001 30 FT 70Th ANNIVERSARY TRAILER

DRAWER SLIDES

381526-01	Drawer slide-950-RV, 14"
381526-03	Drawer slide-950-RV, 18"
381526-04	Drawer slide-950-RV, 20"
381526-06	Rear bracket, drawer, adjustable
381414-144	Slide, drawer-Delta, 14.5"
381400	Slide, drawer, 14", 2900-14
381400-01	Slide, drawer, 12", 2900-12
381415	Slide, drawer, Delta 105
381090	Slide, 22", dinette drawer

BATHROOM ACCESSORIES

381299	Toilet paper holder
380017	Tooth brush/tumbler holder
381626-02	Towel bar, 18"
380248	Soap dish, chrome

WRITING TABLE HARDWARE

381284-02	Bracket, table hinge
101253	Extrusion, hinge, movable
380492	Bracket, table, writing
340018	Plate, catch

2001 30 FT 70Th ANNIVERSARY TRAILER

HARDWARE

MISCELLANEOUS

701342-01	Vinyl strap, sliding door hold back (female snap on both ends)
381443-01	Sliding door set (includes, carriers, top plate and track)
381443-02	Bumper stop #7014
381443-03	Angle stop, #1018
*381385	Dual lock #400-1" strips
*381386	Dual lock #170-1" strips
380045	Clothes rod
200975-04	Conduit, flexible, black(covers clothes rod)
380046	Bracket, clothes rod end
381298	"J" bracket, center clothes rod support
381067-09	Gas prop, bed 90lbs.
381262	Bracket w/ball stud, gas prop
381084	Ball stud
380085	Clip retaining
381570	3-finger pull, sliding door assy.
381065-10	10" cable for access doors
381133	Rack pack, 6.5 Litre, white
381614	Lift up shelf bracket, galley

*These two parts work similar to Velcro but have interlocking knobs rather than hooks and loops.

2001 30 FT 70Th ANNIVERSARY TRAILER

Hardware

Miscellaneous

381526-02	Rear brackets for drawer slides
381527	Speedy shelf strips
381163	Doorknobs, wardrobe
381269	Trailer level, Level Master
320131	Wing nut, Karran sink
345833	Clip, sink mount, Karran sink

2001 30 FT 70Th ANNIVERSARY TRAILER

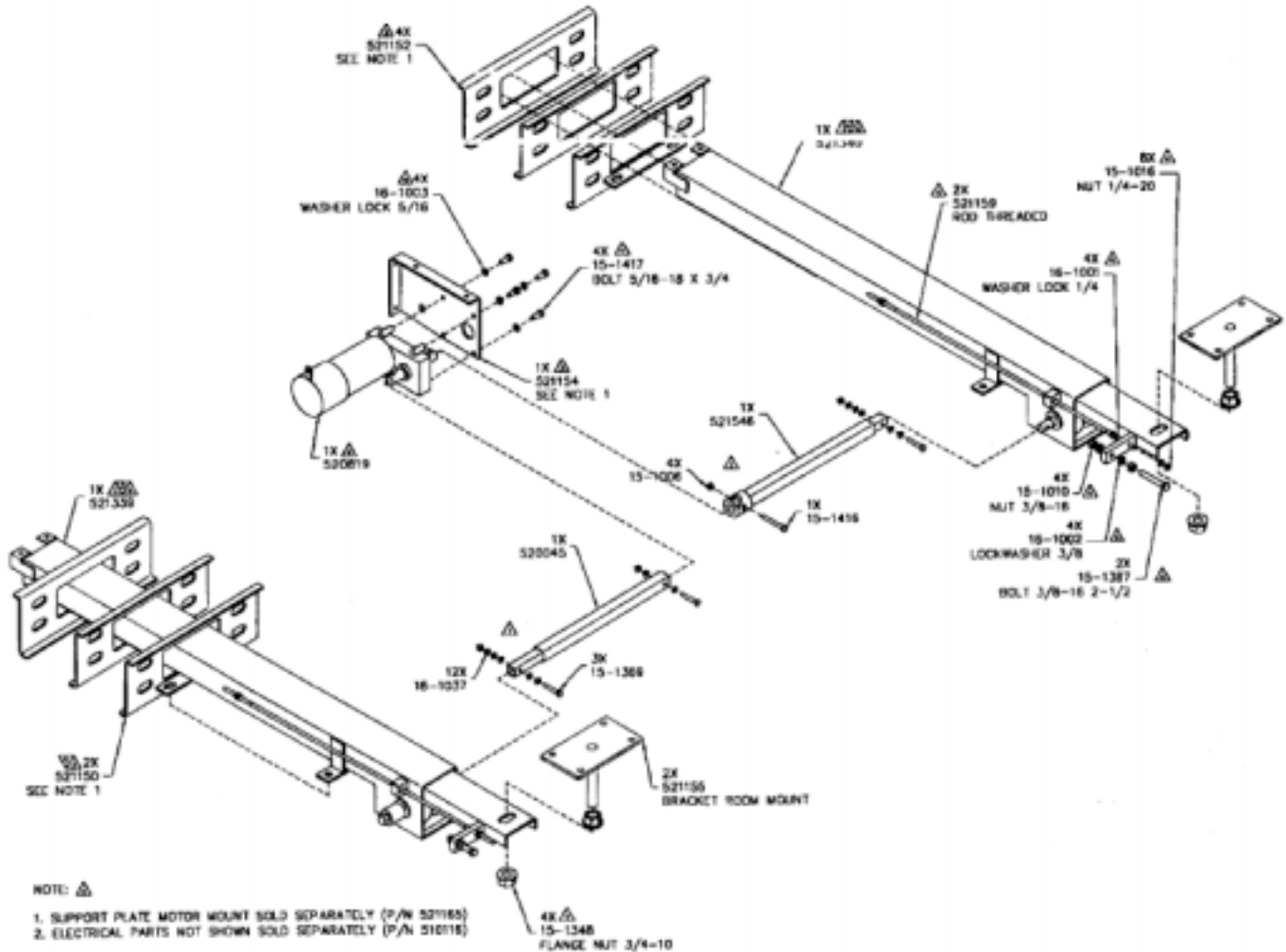
SLIDE OUT ROOM MECHANISM

Airstream Part number 400947

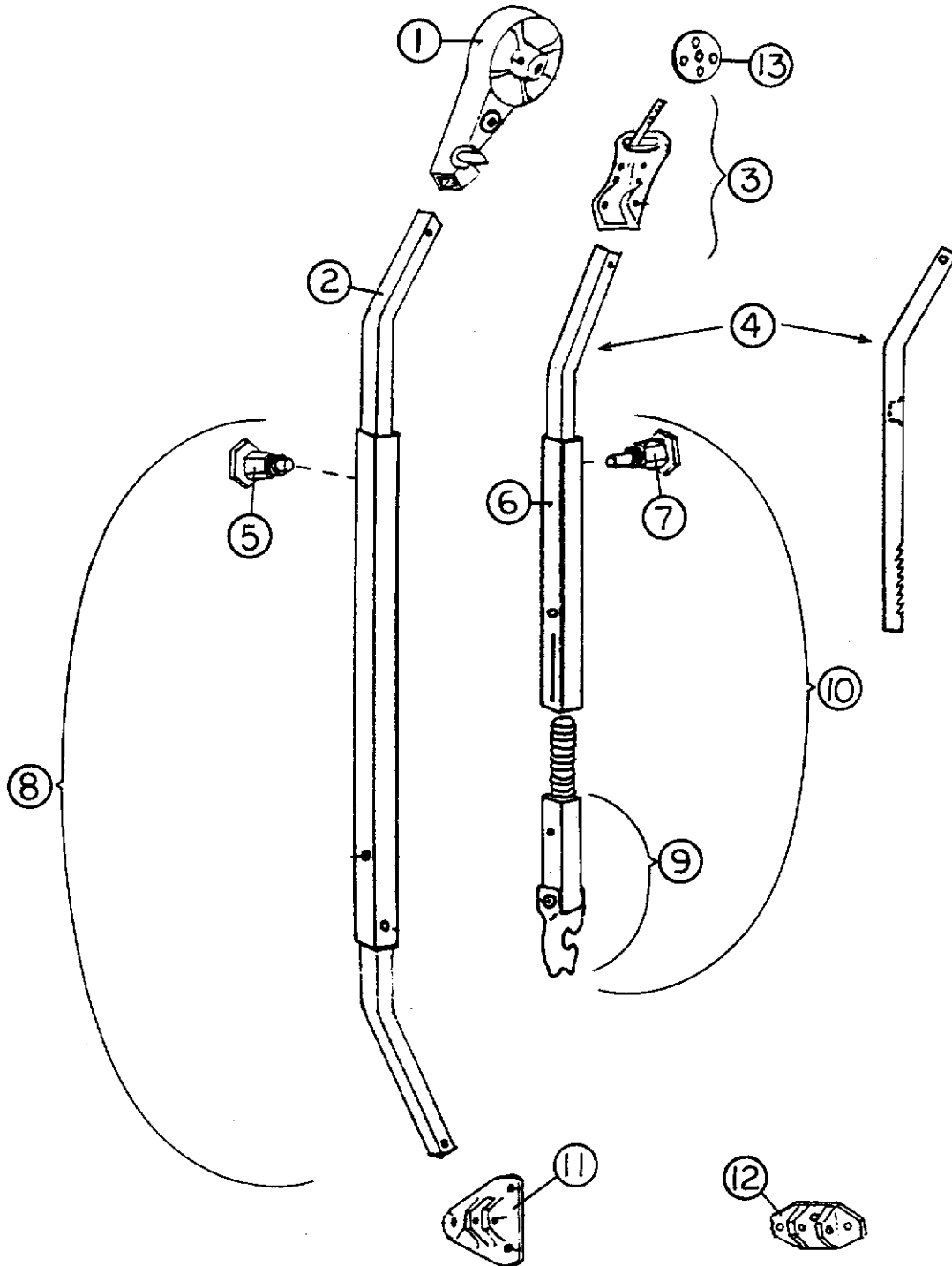
Power Gear System # 521174

Order all parts from Power Gear

Phone number 1-800-334-4712



2001 30 FT 70Th ANNIVERSARY TRAILER



See next page for P/N

2001 30 FT 70Th ANNIVERSARY TRAILER

AWNING HARDWARE

1) 74043W-04	Head assembly, front
1A) 74043W-05	Head assembly, Rear
2) 74047W-09	Main arm bar, front
2A) 74047W-10	Main arm bar, rear
3) 74056W	Clamp assembly, front, curved
3a) 74056W-01	Clamp assembly, rear, curved
4) 74061W-07	Rafter arm bar, satin
5) 74054W	Snap stud assembly
6) 74063W-03	Rafter arm tube, satin
7) 74072W	Ratchet stud
8) 74048WS-12	Main arm tube assembly, front
8a) 74048WS-13	Main arm tube assembly, rear
9) 74068W-03	Claw bar assembly
10) 74048WS-14	Rafter arm assembly
11) 74055W	Base hinge, rib mount
12) 74055W-01	Base hinge, floor mount
13) 74060W	Clamp wheel

2001 30 FT 70Th ANNIVERSARY TRAILER

SECTION IV- EXCELLA

L through Z

LABELS and TAGS IV-1

OPTIONS IV-2

PLUMBING

LPG..... IV-3

Fresh water//Fittings/Faucets..... IV-4

Drain water/Tanks/Sinks IV-9

Toilet IV-14

SAFETY EQUIPMENT IV-16

SEALER/GASKETS/PAINT..... IV-17

UPHOLSTERY/FOAM/MATTRESS..... IV-18

VENTS/FANS IV-22

WOOD/LAMINATES/TRIM..... IV-23

2001 30 FT 70Th ANNIVERSARY TRAILER

LABELS AND TAGS

385193	Label, "12V distribution panel inside"
385048	Label, approval with shield
385269	Label, "DON'T USE AREA FOR STORAGE"
385068	Tag, cooking appliance warning
385067	Label, EXIT
385547	Label, LP gas warning/fill
385517	Label, kill switch warning
385521	Label, emergency egress window
385463	Warning label/cooking appliance
385464	Label, LP gas warning label(odor)
385465	Exit label, English
385560	Label, air-conditioner rating
385512	Label, Calif. hazardous substance
385609	Label, smoke detector
385359	Label, microwave or air-conditioner
385837	Label, refrigeration ignition
385103	Plate, RVIA
385418-01	Label, Federal registration
385062	Decal, 110-125 voltage AC
385565	Label, holding tank flushing
386012	Label, warning-water heater
385101	Tag, aux., dump valve
385099	Tag, Black tank dump
386019	Label, 1 amp. fuse max.
386038	Label, CSA, Holding tank fresh water
386060	Label, satellite, receiver

2001 30 FT 70Th ANNIVERSARY TRAILER

OPTIONS

410483	Spare tire and steel wheel, BSW, LR "D", 15"
381318-05	Skylight, 19.5" x 19.5" , galley/lounge
114485	Mounting frame, skylight
201962	Trim ring, skylight
702804-03	Shade, pleated, skylight, 19.25" x 20.00"
381318-06	Skylight, 14.5" x 22.5" bath
114486	Mounting frame, skylight, bath
201963	Trim ring, 14" x 22", skylight, white
702804-04	Shade, pleated, skylight, 14.5" x 22.75"
690425-01	Refrigerator, NDR1062, RH
690425-02	Refrigerator, NDR1062, LH
690396-01	Range w/oven, Magic Chef
114876	Trim ring, range recess
965304-005	Galley face frame, full oven
690407-01	Microwave, Dometic, black
690407-02	Trim kit, Dometic microwave
690345-01	Microwave/convection, Sharp
690345-03	Trim ring, convection
601711	LP tank, 30# aluminum
601711-01	LP tank, 30# alum. CSA
601712	LP tank, 40# alum
601712-01	LP tank, 40# alum, CSA
511191	CD changer, 10 unit, Sony CDX-636

2001 30 FT 70Th ANNIVERSARY TRAILER

PLUMBING LPG SYSTEM LP BOTTLES AND FITTINGS

601710-01	Bottle, LP, steel, 30#
601710-02	Bottle, LP, steel, CSA
601711	Bottle, LP, aluminum, 30#
601711-01	Bottle, LP, 30# alum., CSA
601377-01	Regulator, Fisher
601732	LP hose, tank to regulator, 36"
601775	LP hose, 18"

601776	Union, 1/2" flare x 5/8" flare
600468	Union flare, 5/8" x 5/8"
600238	Union flare, 3/8" x 3/8"
600004	Copper tubing, 5/8"
600008	Copper tubing, 3/8"
600436	Flare nut, forged, 5/8"
600661	Grounding clamp, 1/2 to 1 size
600435	Flare nut, forged, 3/8"
600000	Tee, brass, 5/8" x 5/8" x 3/8"
600003	Tee, brass, 5/8" x 3/8" x 3/8"

BOTTLE COVER

104264-01	Gas bottle cover w/o decal, 30lbs
380903	Latch and strike
200845	Lid, plastic, bottle cover
380773	Hinge, access door
386049-04	Decal, LP bottle cover

2001 30 FT 70Th ANNIVERSARY TRAILER

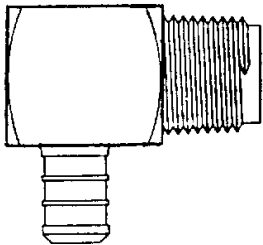
PLUMBING FRESH WATER

601194	Water fill w/lock, gray
601621-01	Tank, fresh water
601620	Pan, fresh tank
601243	Drain cock, fresh water tank
601588	Drain cock, brass, water lines
600155	Plug, water tank, 1.5"
600836	Elbow, 1/2" barb x 3/8" MPT
601237	Plastic elbow, 90 degree, 1.25" MPT x 1.25" barb
601239	Tubing, 1.375" I.D., flexible, water fill hose
601061-03	Water pump, Shurflo
601668	Filter, pre water pump
601464	Tank, accumulator, Shurflo
601723	Filter screen, water

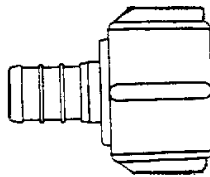
CITY WATER

601467	Sill cock, 1/2" FP w/wheel handle
601469	Vacuum breaker, 3/4" garden hose
601197-01	Water hook-up, chrome
601786	Water fill
601392-04	Water fill, city w/regulator, gray
600139	Check valve, brass
601565-01	Hose, water, 12" w/fittings
381435	Hatch, white plastic, water hose exit
601240	Tubing, clear, fresh water fill vent

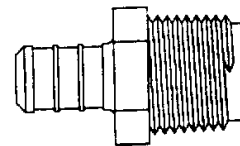
FITTINGS



601698-04
Elbow, 1/2" barb
x 1/2" MPT



601698-03
Coupler, 1/2" barb
x 1/2" FPT

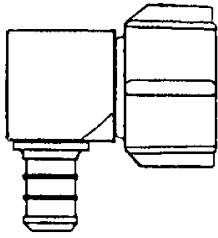


601698-02
Coupler, 1/2" barb
x 1/2" MPT

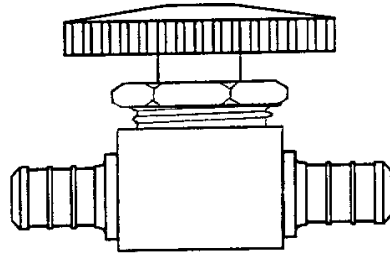
(continued)

2001 30 FT 70Th ANNIVERSARY TRAILER

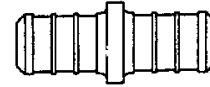
FRESH WATER-FITTINGS



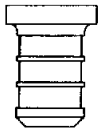
601698-05
Elbow 1/2" barb x
1/2" FPT



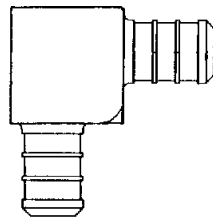
601698-07
Shut-off, 1/2" barb x
1/2" barb



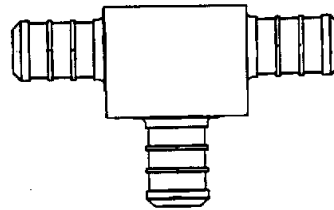
601698-08
Coupler
1/2" x 1/2" barb



601698-09
Plug, 1/2" barb
1/2" barb 1/2" barb



601698-10
Elbow 1/2" barb x
1/2" barb



601698-11
Tee, 1/2" x 1/2" x
1/2"



601698-15
Crimp ring, 1/2"
E-Pex, 1/2" (black)



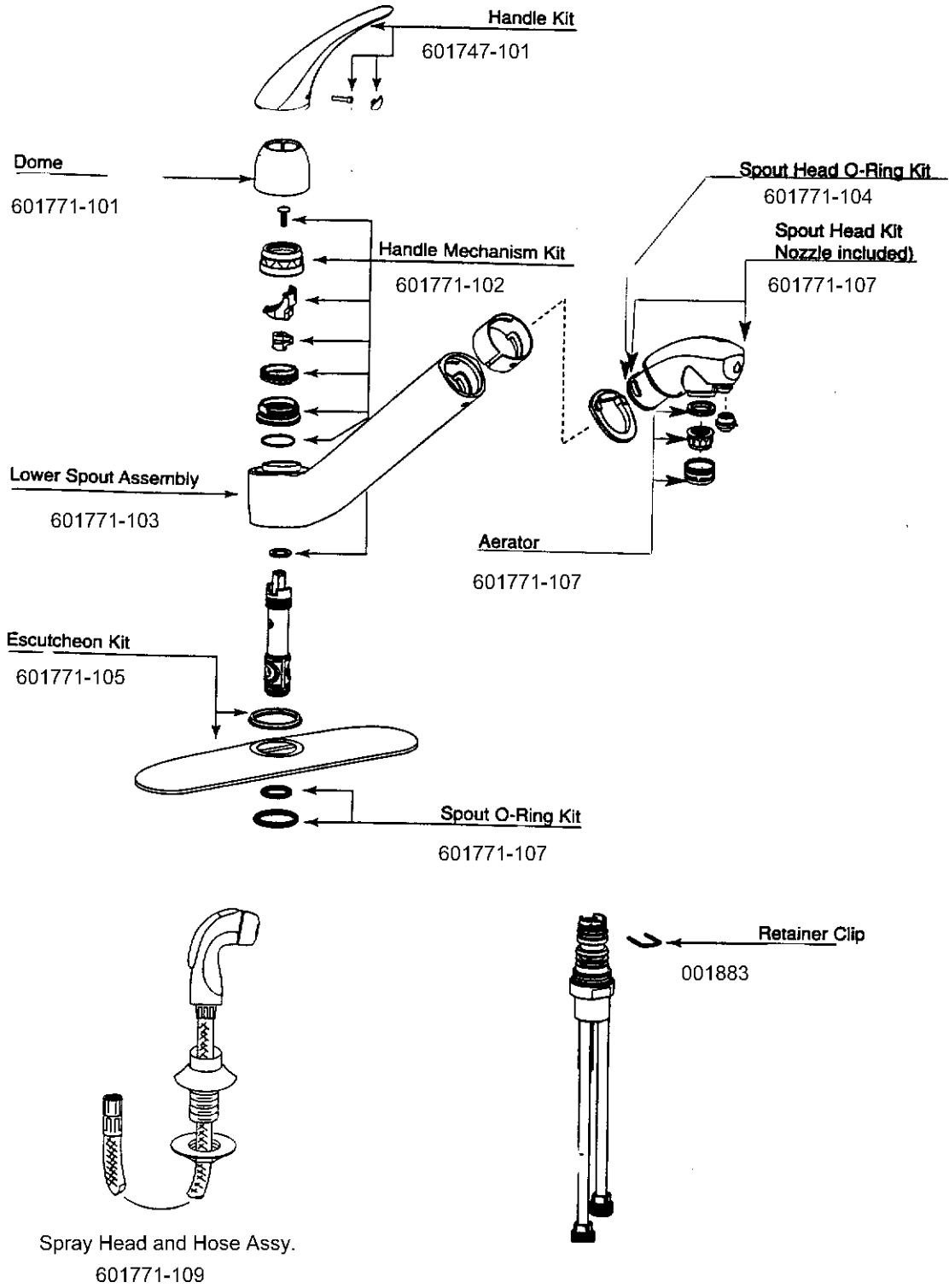
601698-01
E-Pex tube, 1/2"

601755, ring, clamping,

1/2", copper

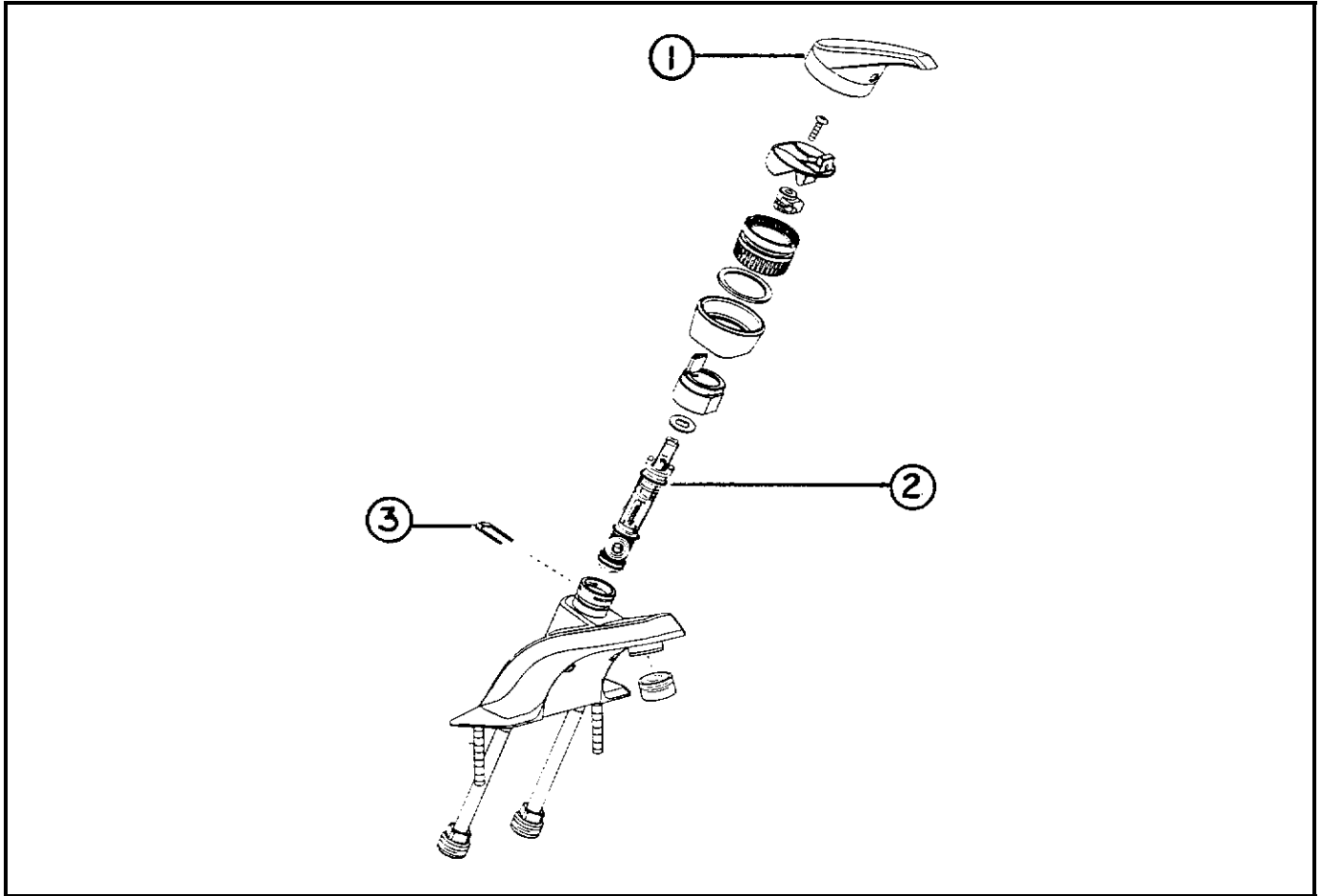
2001 30 FT 70Th ANNIVERSARY TRAILER

601771 Moen Pure Touch Classic



2001 30 FT 70Th ANNIVERSARY TRAILER

PLUMBING FRESH WATER-FAUCETS



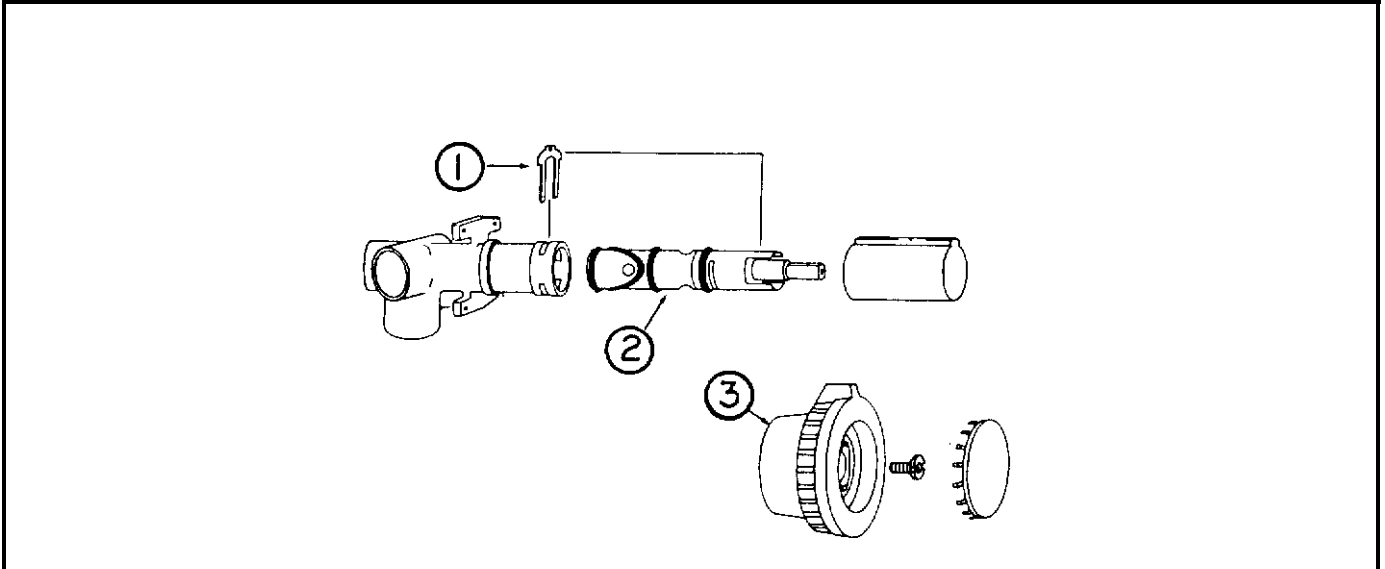
690390-02 Faucet, lavatory, Moen, brass/chrome

- 1) 690390-100 Lever handle
- 2) 601579-105 Cartridge
- 3) 601579-104 Retainer clip

2001 30 FT 70Th ANNIVERSARY TRAILER

PLUMBING

FRESH WATER



601420-02 Shower faucet, polished brass

- 1) 000883 Retainer clip
- 2) 601420-100 Cartridge, #1200
- 3) 001041 Handle

Shower stall fittings

- 601359-101 Elbow with flange, brass
- 601173 Vacuum breaker, brass
- 601175-01 Shower hose, brass
- 601257 Shower head w/shut-off, brass
- 601359-100 Wall holder, showerhead, brass
- 601358 Shower hardware unit, chrome

2001 30 FT 70Th ANNIVERSARY TRAILER

PLUMBING

DRAIN SYSTEM

601622-01	Tank, holding, gray, 30ft.
601623-01	Tank, holding, black, 30ft.
0360499	Slope pad, Styrofoam
601619	Pan, waste tank, 30ft.
601228	Close-out septic pan
601431	Dump valve, w/o handle
04190	Handle extension, dump valve
114086	Bracket, dump valve extension
453712	Shield, fresh water tank drain
690327-02	Toilet, high w/pad seat #08445-IB
600065	Flange, floor, threaded
600883	Coupler, toilet, PB 820
601165-02	Water line risers, 54"
600187	Wye, 3", comb. & 1/8" bend
601531	Fitting, 90 degree, 3" H x ST
600820	Single socket, 3", 90 degree
601323	Female fit & "O" ring, dump valve
600289	Calder coupling, 3", rubber
380481	Boot, rubber, 3" drain line
0310107	Waste valve adapter
601200	Adaptor, Auto-vent, w/extension #A-201
511018	Harness, tank, monitor system
601676	Tail piece, lavy, chrome

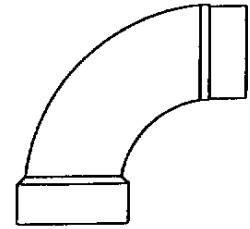
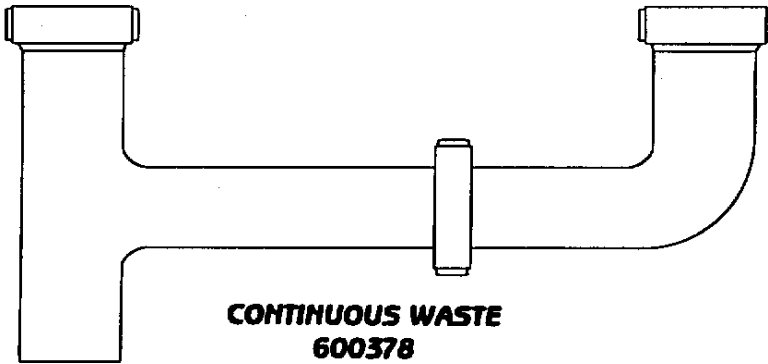
2001 30 FT 70Th ANNIVERSARY TRAILER

PLUMBING

DRAIN SYSTEM

230367-01	Sink, Karran, Bone, bathroom
453833	Clip, sink mount
320129	Insert, threaded ¼" O.D. x ¼" long
320130-09	Screw, #10-32 slotted hex HD 1.25 long
320131	Wing nut, #10-32, Zinc
600594	Strainer w/white rubber stopper
203081	Shower stall, 2 piece, 28 & 30ft.
600594	Strainer with rubber stopper
01639	Bayonet ring, 3" Thetford
01664	Cap, 3"sewer outlet, Thetford
601744-02	Sink, kitchen, almond, enamel, 16" x 27"
600968	Basket strainer
381635	Sink clip, under mount, Corian
601441	Tank flush, no-fuss (vacuum breaker & check valve)
601441-01	Nozzle, tank mounted, no-fuss flush
60032-01	Water inlet, garden hose thread, tank flush
601160-04	Pipe, 3" ABS
601160-02	Pipe, 1.5" ABS
601589	Adaptor, brass, 3/8" FPT x ½" MPT

2001 30 FT 70Th ANNIVERSARY TRAILER
PLUMBING 15." FITTINGS



**ELBOW 90D
LONG ST
600431**



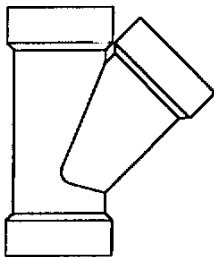
**TRAY ADAPTOR
600625-01**



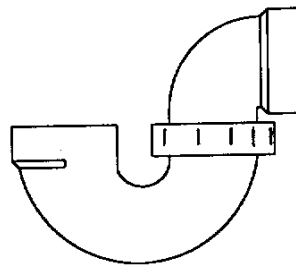
**TRAY ADAPTOR
600625-02**



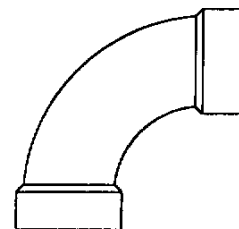
**SWIVEL
ADAPTER
600822**



**WYE
#2301
600094**



**P-TRAP
15" W/O SLIP NUT
600144**

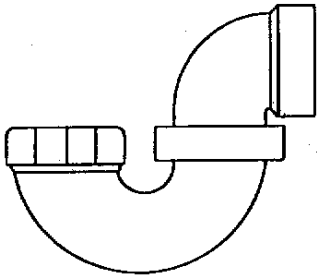


**ELBOW 90D
LONG TURN
600035**

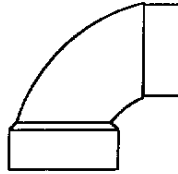
(continued)

2001 30 FT 70Th ANNIVERSARY TRAILER

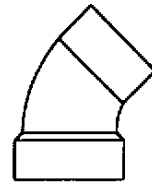
PLUMBING 1.5" FITTINGS



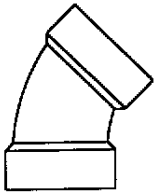
**P-TRAP
1.5" WITH SLIP NUT
600622**



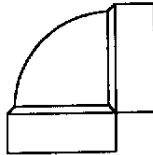
**ELBOW 90D
SHORT ST
600662**



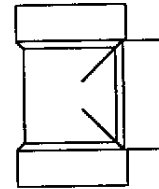
**ELBOW 45D
LONG ST
600027**



**ELBOW 45D
LONG TURN
600030**



**ELBOW VENT
90D
600033**



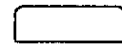
**TEE-BI DIRECTIONAL
CLEAN-OUT 1.5"
601318**



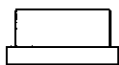
**PLUG 1.5"
600155**



**VENT 1.5"
600538**



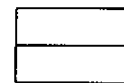
**CAP 1.5"
601677**



**REDUCER 1.5" TO 1.25"
601263**



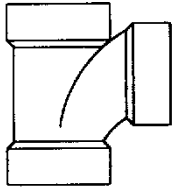
**ADAPTER
601676**



**ADAPTER
W/FEMALE THREADS
600308**

2001 30 FT 70Th ANNIVERSARY TRAILER

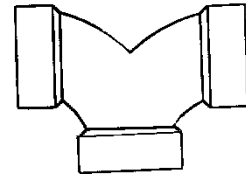
PLUMBING 1.5" FITTINGS



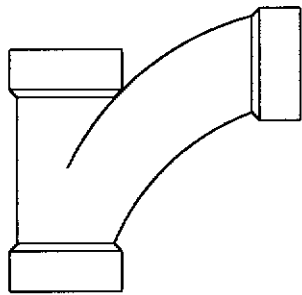
**TEE-SANITARY
1.5"
600156**



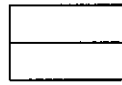
**ELBOW 22.5D
SHORT TURN
600116**



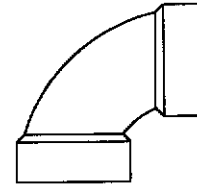
**ELL DOUBLE 1.5
195329-486**



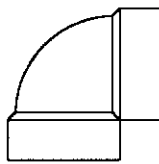
**WYE 1.5"
1/8" BEND
600182**



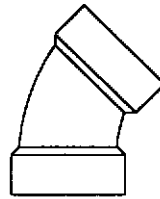
**COUPLING
1.5"
600227**



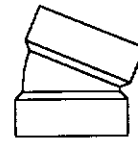
**ELBOW 90D
SHORT SWEEP
601636**



**ELBOW VENT
90D
600033**



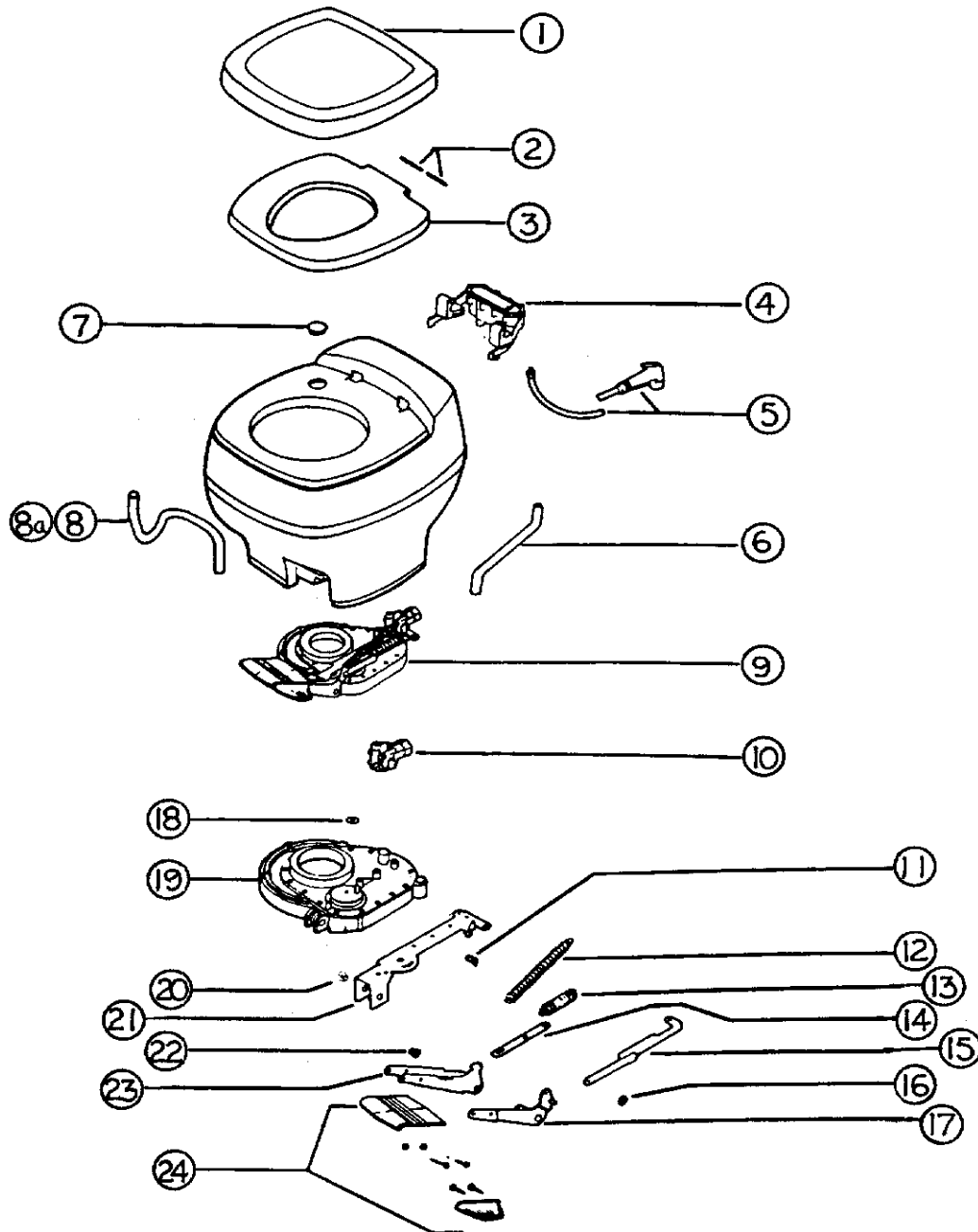
**ELBOW 45D
LONG TURN
600030**



**ELBOW 22.5D
SHORT TURN
600116**

2001 30 FT 70Th ANNIVERSARY TRAILER

NOTES: PLUMBING THETFORD, AQUA MAGIC GALAXY, PARCHMENT



See next page for P/N.

2001 30 FT 70Th ANNIVERSARY TRAILER

PLUMBING

THETFORD, AQUA MAGIC GALAXY, PARCHMENT
690327-02 Toilet complete, Aqua Magic Galaxy, high

- 1) 020925 Padded seat cover, parchment
- 2) 012986 Hinge pin
- 3) 1626457 Seat, parchment
- 4) 008217 Vacuum breaker w/water saver, parchment
- 5) 008993 Water saver package
- 6) 003728 Water supply tube
- 7) 003895 Hole plug, parchment
- 8) 003729 Trap tube, 20", low style
- 8a) 003727 Trap tube, 27", high style
- 9) 024203 Mechanism, parchment
- 10) 009868 Ball valve replacement package
- 11) 002391 Drive arm assembly
- 12) 002802 Spring, ball valve return
- 13) 002801 Spring
- 14) 008986 Push link
- 15) 002796 Drive arm
- 16) 002394 Ring, retainer
- 17) 009421 Pedal arm assembly
- 18) 008034 Retainer ring, ¼"
- 19) 020929 Base and cover assembly
- 20) 003749 Bushing, mechanism
- 21) 012593 Lever plate
- 22) 003749 Bushing, mechanism
- 23) 019266 Pedal arm
- 24) 020930 Double pedal package

2001 30 FT 70Th ANNIVERSARY TRAILER

SAFETY EQUIPMENT

510781	Smoke detector
511309	LPG detector
600162-01	Fire extinguisher
0300027	Break-away switch
510661	Breaker, 110 volt, 20 amp, GFI
371348-02	Window, rear w/red handles
371349-01	Screen, rear escape
372175-03	Screen, 30", alternate escape
380230-04	Knob, window arm, red
381088	Handle, lower window latch, red

2001 30 FT 70Th ANNIVERSARY TRAILER

SEALER/GASKETS/PAINT SEALER

360074	Sealant, white, 3 oz. tube
360001	Sealant, #884058
360002	Sealant, Vulkem 11.5 oz. tube
360209	Sealant, seam
360176	Sealant, Almond, kitchen and bath
360180	Sealant, Sikaflex #221
360210	Sealant, Paralastic 4334-014
360283	Sealant, silicone, Corian Bone

GASKETS

381704	Gasket, upper main door
365232	Gasket, main/baggage door
365013-01	Gasket, screen door
0401-0002	Gasket, window frame to glass
365035	Gasket, access doorjamb
380114	Gasket, vent pipe, roof
365221	Tape, double coated, 1/32 urethane
365222	Tape, double coated, .08" x 3/4"
365016	Tape, foam, double face, 1/2" wide
365001	Tape, double coated foam
365143	Tape double coated
3865239	Foam pad, non-skid, 1/16" x 1/4" x 1.0" (used between mirror and door frame)

PAINT

360213	Paint, Metallic Aluminum, Centari #65751
360260	Paint, Pewter
360151	Paint, gray metallic, Centari #44146A
360292	Stain, Saratoga Map (new for 2000 models)

2001 30 FT 70Th ANNIVERSARY TRAILER

UPHOLSTERY/FOAM/MATTRESS

REAR BEDROOM

- *702485-320 Bed spread, twin, Golden Map
- *702676-320 Bed spread, double, Golden, Map

- 701770 Mattress, 34" x 78" ,contoured, twin, all models
- 702674 Mattress, 60 x 75, w/45 deg. Corner

- *703120-70 Sofa, jack knife, 74in., 1000 style, 70th Ann.

- 701611 Pillow, 21" x 31"
- 703038-01 Pillow, lounge, Mosaic Blue
- 703038-02 Pillow sham, bedroom, Mosaic Blue
- 702953-01 Pillow, lounge, Roman Sands
- 702953-02 Pillow-sham, bedroom, Roman Sands
- 702978-01 Pillow, lounge, Tropical Isle
- 702978-02 Pillow, square, bedroom, Tropical Isle
- 702978-03 Pillow, round, bedroom, Tropical Isle
- 702932-01 Pillow, lounge, Vintage Leaf
- 702932-02 Pillow, square, bedroom, Vintage Leaf
- 702932-03 Pillow, round, bedroom, Vintage Leaf

UPHOLSTERY COVERS

- 998070 Cover, seat, side dinette
- 998071 Cover, back, side dinette

- 963398-01 Arm rest cushion, front lounge, RS
- 963398-03 Arm rest cushion, front lounge, CS
- 703125-02 Top, dinette seat, urethane-buckskin, 70th Ann.

Changing the-(dash) number to

320 =Golden Map

350 =Georgia Peach

470 =Mandalay Blue

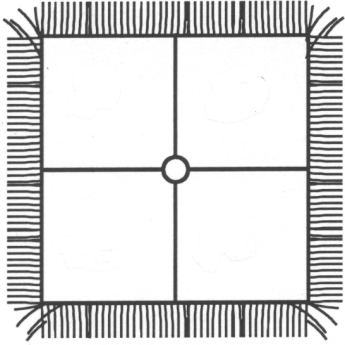
460 =Mystic Mint

379 = Mosaic Blue

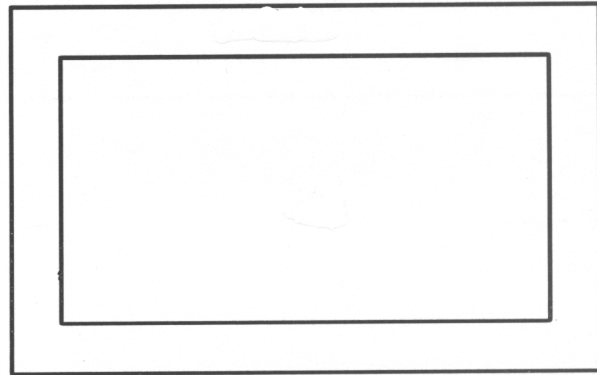
389 = Tropical Isle

2001 30 FT 70Th ANNIVERSARY TRAILER

Upholstery/ Foam/Mattresses
Golden Map pillow kit

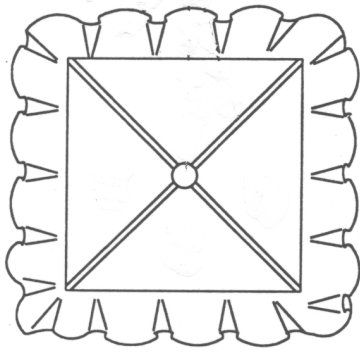


703089-01 Sofa

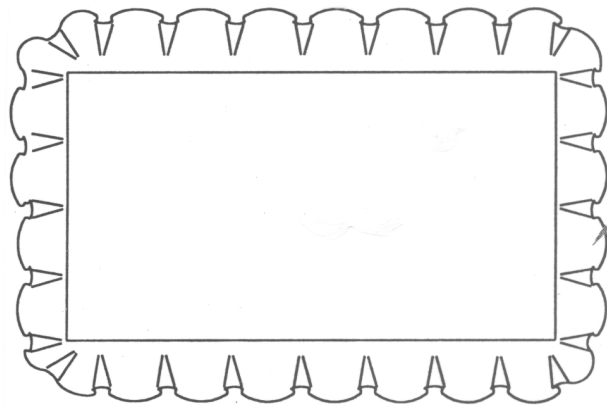


703089-02 Bedroom Sham

Georgia Peach Pillow Kit



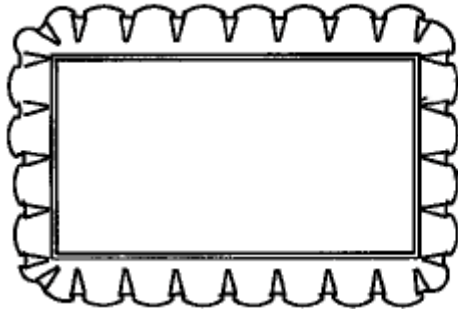
703062-01 Sofa



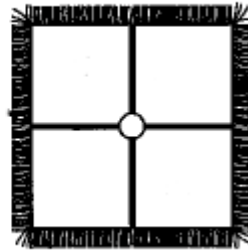
703062-02 Bedroom Sham

2001 30 FT 70Th ANNIVERSARY TRAILER
UPHOLSTERY/ FOAM/MATRESSES

Mystic Mint



703109
Bedroom pillow sham

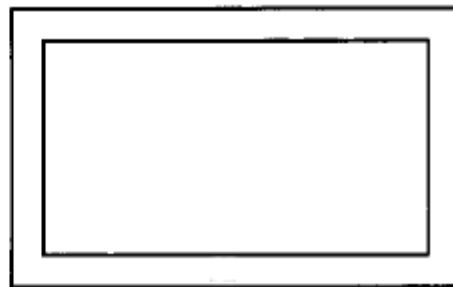


703109-01
Sofa pillow

Mandalay Blue



703107-01
Sofa pillow



703107-02
Bed shams

2001 30 FT 70Th ANNIVERSARY TRAILER

FOAM

702464-21	Foam, upper back, dinette
702464-13	Foam, lower back, dinette
702464-14	Foam, aft seat, dinette
702464-15	Foam, forward seat, dinette
702673-01	Foam, armrest, RS
702673-03	Foam, armrest, CS

2001 30 FT 70Th ANNIVERSARY TRAILER

VENTS/FANS

381564	Vent, automatic, w/wall thermostat, Fantastic
381450-100	Screen, Fantastic roof vent
381450-101	Motor, elevator, Fantastic vent
690266-01	Ventilator, power, bathroom
690266-03	Extension, garnish, 4", roof, bath ventilator
381541-06	Roof vent w/power lift
381541-05	Switch, white, ceiling vent
381541-04	Trim ring, inside, Ventline
511152-04	Range-hood w/monitor
114462	Duct, range transition, formed
453000	Bracket, range hood support
511017-11	Vent cover, exterior, range hood, gray
100341	Refrigerator, vent collar, large
101394	Cover, refrigerator vent, large
690264-03	Vent pipe cover
380114	Gasket, vent pipe

2001 30 FT 70Th ANNIVERSARY TRAILER

WOOD/LAMINATES/INTERIOR TRIM

800397-01	Cedar, planked, 5/32" x 4' x 8'
800542-02	Structure wood 3/8" x 4' x 8'
800542-03	Structure wood 1/2" x 4' x 8'
800542-05	Structure wood .700" x 4' x 8', sanded
800507-01	Paneling, luan, 1/8" x 4' x 8'
800507-02	Paneling, luan 1/4" x 4' x 8'
800506-03	Paneling, luan 3/8" x 4' x 8'
801318	Paneling, pre-laminated maple, 4' x 8' x 5/8"
801261	Paneling, 1/8" x 4' x 8', G1S, Antiquity Buff/raw
801284-005	Paneling 1/2" x 4' x 8', G2S, Map/Antiquity Buff
801283	Paneling 1/2" x 4' x 8', G2S, Antiquity Buff/Antiquity Buff
801274	Paneling 1/2" x 4' x 8', G1S, Antiquity Buff
801180-005	Paneling 1/2" x 4' x 8', G2S, Map/Map
801179-005	Paneling, 1/2" x 4' x 8', G1S, Map/raw
801182-005	Paneling 5/32" x 4' x 8', G2S, Map/Map
801181-005	Paneling 5/32" x 4' x 8', G1S, Map/raw
801230	Laminate, Map, 4' x 8'
801229	Laminate Map, .045"-.050"
801317	Laminate, high pressure, Sugar maple, 70 Th Ann.
365251-01	Tape, seam, Antiquity Buff, 1 1/8" wide
365251-02	Tape, seam, Antiquity Buff, 8" wide
365251-03	Tape, seam, Antiquity Buff, 12" wide

2001 30 FT 70Th ANNIVERSARY TRAILER

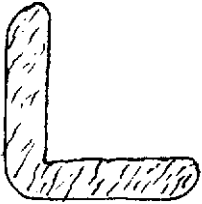
WOOD/INTERIOR



1) 801206-015



2) 964152-015



3) 800575-015



4) 800571-015



5) 801315-01



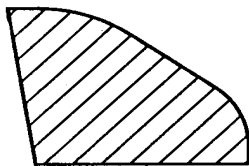
6) 801172-015
6a) 801172-04



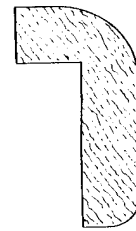
7) 800572-015



8) 800573-015



9) 801242-005



10) 964280-005

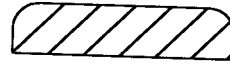
- | | |
|----------------|--|
| 1) 801206-015 | Molding, floor, Map, 43" |
| 2) 964152-015 | Molding, chair rail, Map |
| 3) 800575-015 | Molding, corner, Map |
| 4) 800571-015 | Molding, Map, flat 1/4"x33/64"x80" |
| 5) 801315-01 | Molding, quarter round, Map |
| 6) 801172-015 | Molding, flexible corner, Map |
| 6a) 801172-04 | Molding, flexible corner, Antiquity Buff |
| 7) 800572-015 | Molding, flat radius, .88" Map |
| 8) 800573-015 | Molding, flat radius, 1.13" Map |
| 9) 801242-005 | Molding, threshold, main door, Map |
| 10) 964280-005 | Molding, counter top edge, Map |

2001 30 FT 70Th ANNIVERSARY TRAILER

WOOD/INTERIOR



800572-015
Hardwood flat
molding, 072"



800573-015
Hardwood, flat
molding, door edge

201666-01 Molding, J-trim 3/16", almond plastic