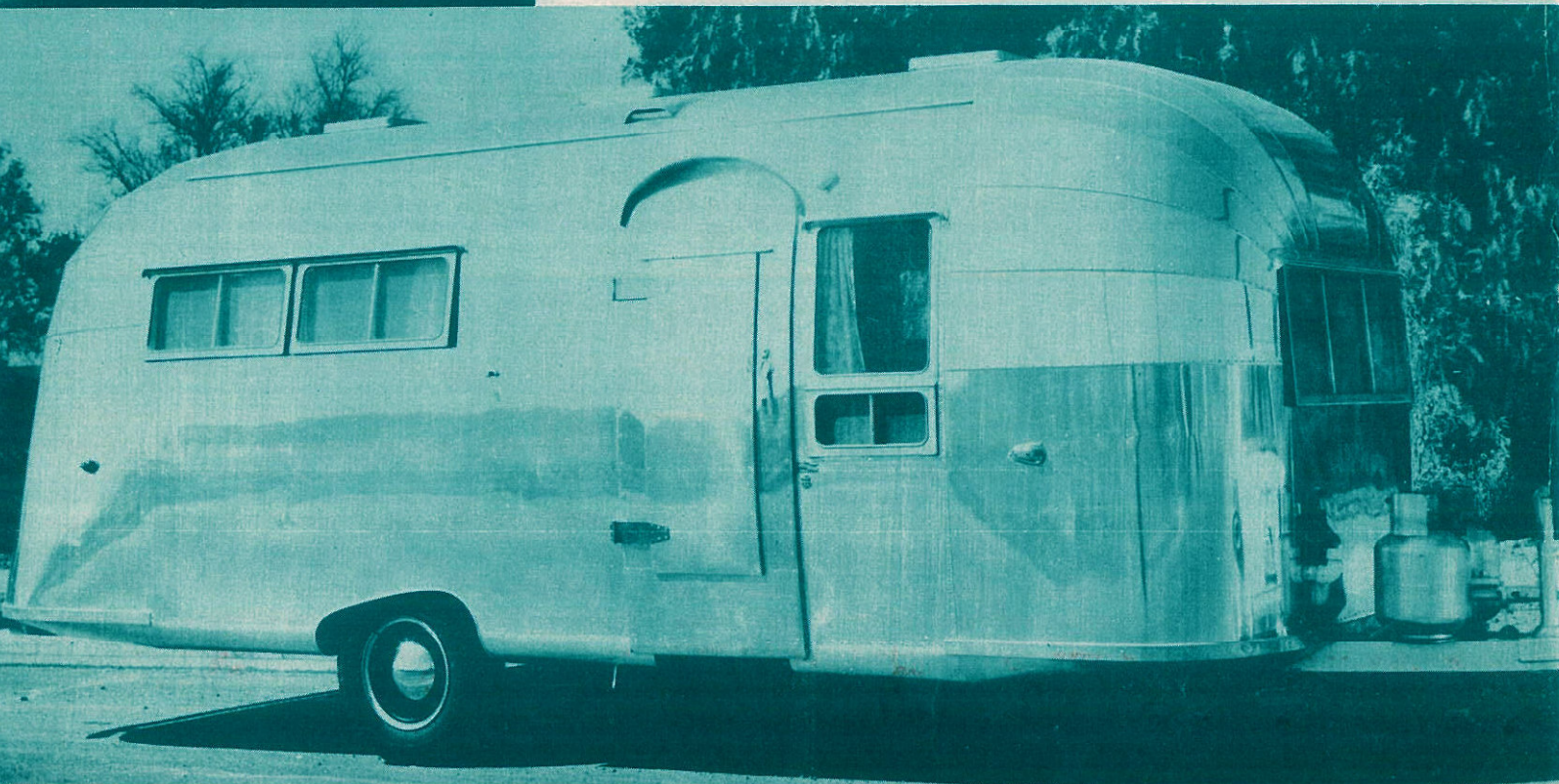


THE  
SENSATIONAL  
ALL-NEW  
AIRSTREAM

1950's

# 22-ft. Flying Cloud



## DESIGNED AND BUILT TO TRAVEL IN COMFORT

In the new Flying Cloud, Airstream gives you a deluxe travel trailer that meets the most exacting demands for utmost comfort combined with utmost mobility. Available in both twin and double bed models, the exciting new Airstream Flying Cloud is the standard of the road in travel trailers, the envy of everyone who has ever dreamed of owning the finest product of trailer engineering. Travel-tested on tens of thousands of miles of Wally Byam Caravans the world over, the Flying Cloud is another triumph of design by Airstream — since 1932 builders of the world's finest lightweight trailers.

## SPECIFICATIONS AND STANDARD EQUIPMENT\*

Overall length—22 ft.	Wall mount stove fan	Escape rear window	Porch light
Overall weight—2870 lbs.	Oven and broiler stove	3 roof vents	Trunk door
Body length—19 ft.	Divan front	Full screen door	12-ft. awning rail
Hitch weight—260 lbs.	Inlaid linoleum	Formica galley tops	Brakes, Steel bumper
Large living room	Double sinks	Two closets	Heavy Duty Axle
Separate shower & toilet	Hot water heater	Medicine cabinet	700-15 8 ply tires
Double or twin beds	Gear operated windows	Touch control built-in step	2" aircraft insulation
Comb. ice-electric refrigerator	Butane tank	Warp-free hollow core doors	Stainless steel door hinges

### AND ALWAYS THESE FAMOUS AIRSTREAM FEATURES:

All-metal, all aluminum construction • All-riveted body • All-steel undercarriage • All-over Aerocore Fiberglass insulation • Vibration-proof fastenings.

\*Subject to change without notice.



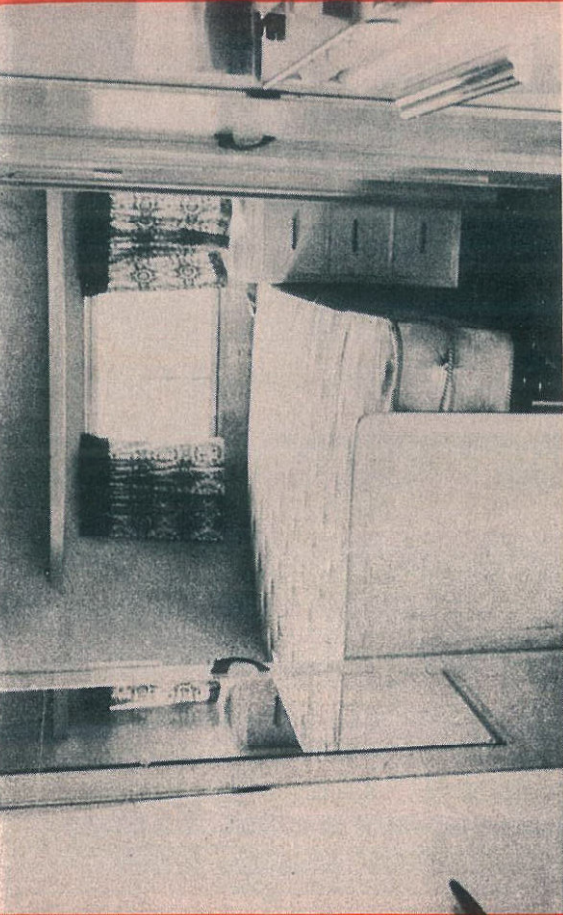
# AIRSTREAM

TRAILERS, INC.

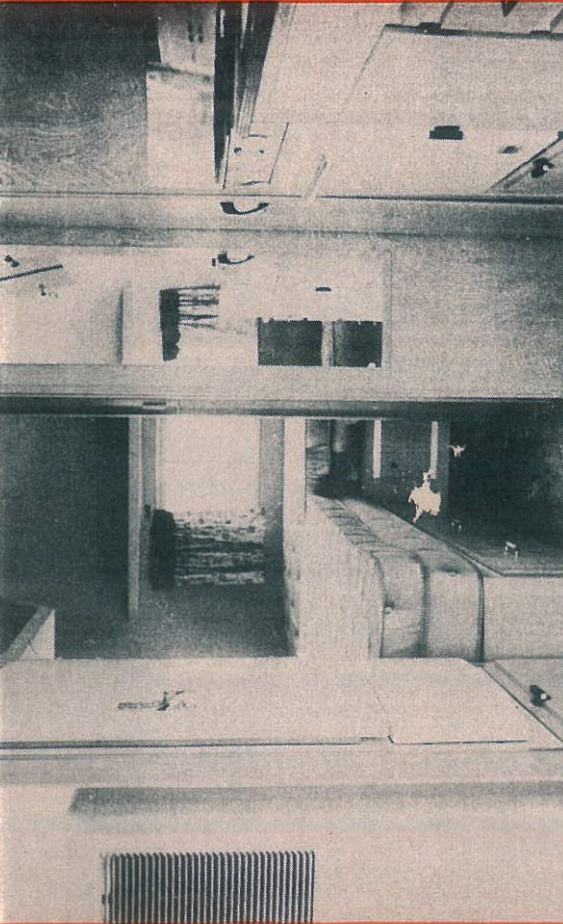
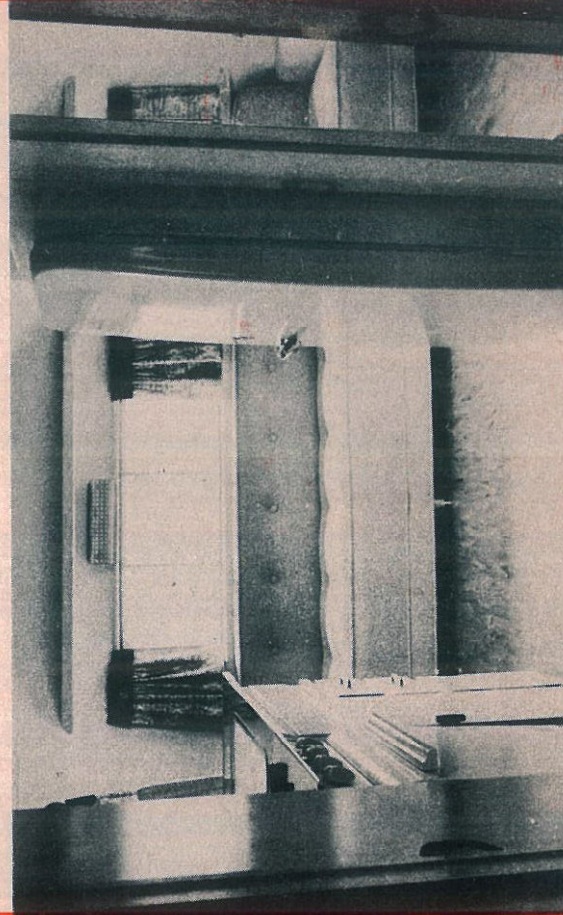
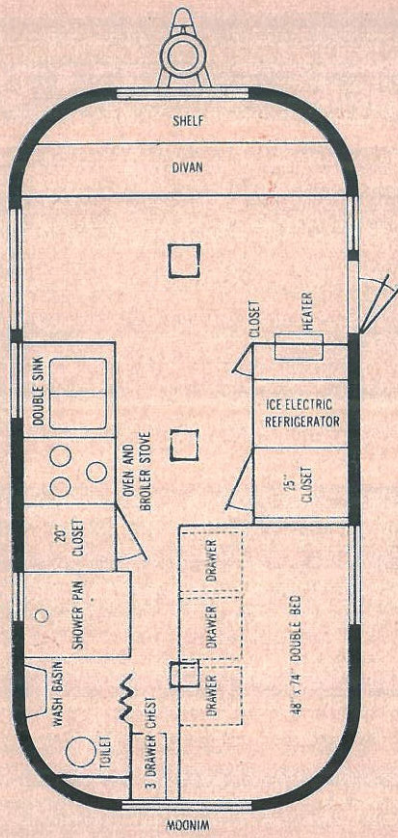
12804 E. Firestone Blvd. • Norwalk, Calif.  
(Santa Ana Freeway at Roscrans)

SINCE 1932 THE WORLD'S FINEST LIGHTWEIGHT TRAVEL TRAILERS





DOUBLE BED MODEL



TWIN BED MODEL

