

1956 Flying Cloud 22'

Ohio | O-3294 to O-3420
(many appear as "Customs" this year)

California | 7NNN/8NNN (about 7975 to 8100)



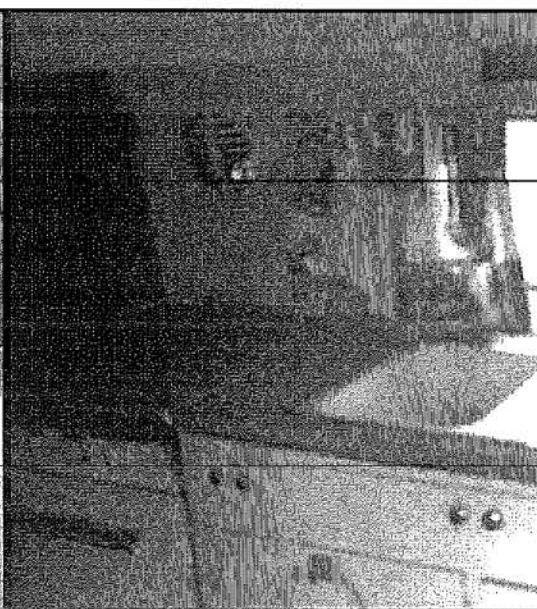
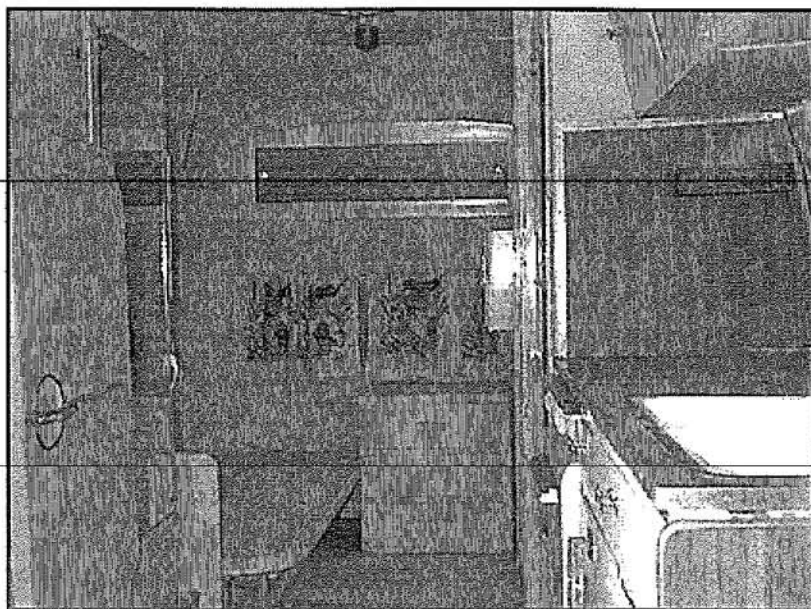
The popular 22 foot layout of the Flying Cloud that started k

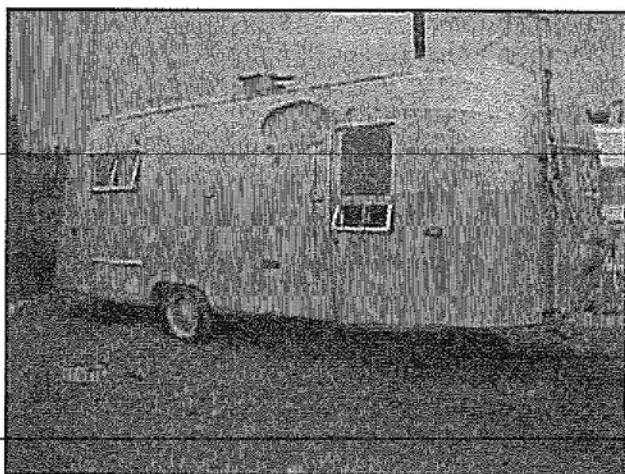
continued in both Ohio and California in the mid '50's, with a being made each year. Above is s/n 7980 - the Bargman 99's w addition, as smaller recessed Bargman 11's were still the :



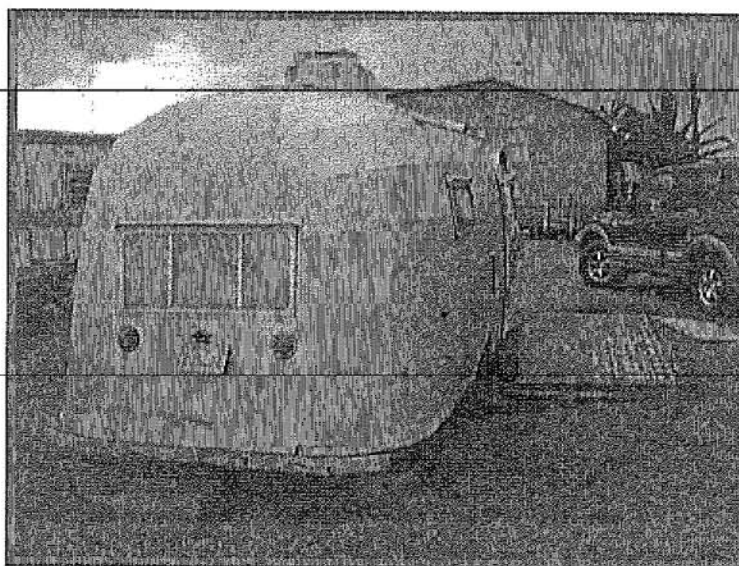
The interior has been painted
on this one

This sn 8053, set up
full 6 volt system
hot water heater (st
under the galley -
common for the era





And don't forget our local celebrity "Floyd", our '56 Califo:
Cloud and the subject of its own section on our websit



(click to visit)

| [restoration resources](#) | [our 1965 caravel](#) | [vintage airstream home](#) |

| [1956 flying cloud](#) | [vintage photo archives](#) |

| [site map](#) | [radio gallery](#) | [for sale & wanted](#) |

