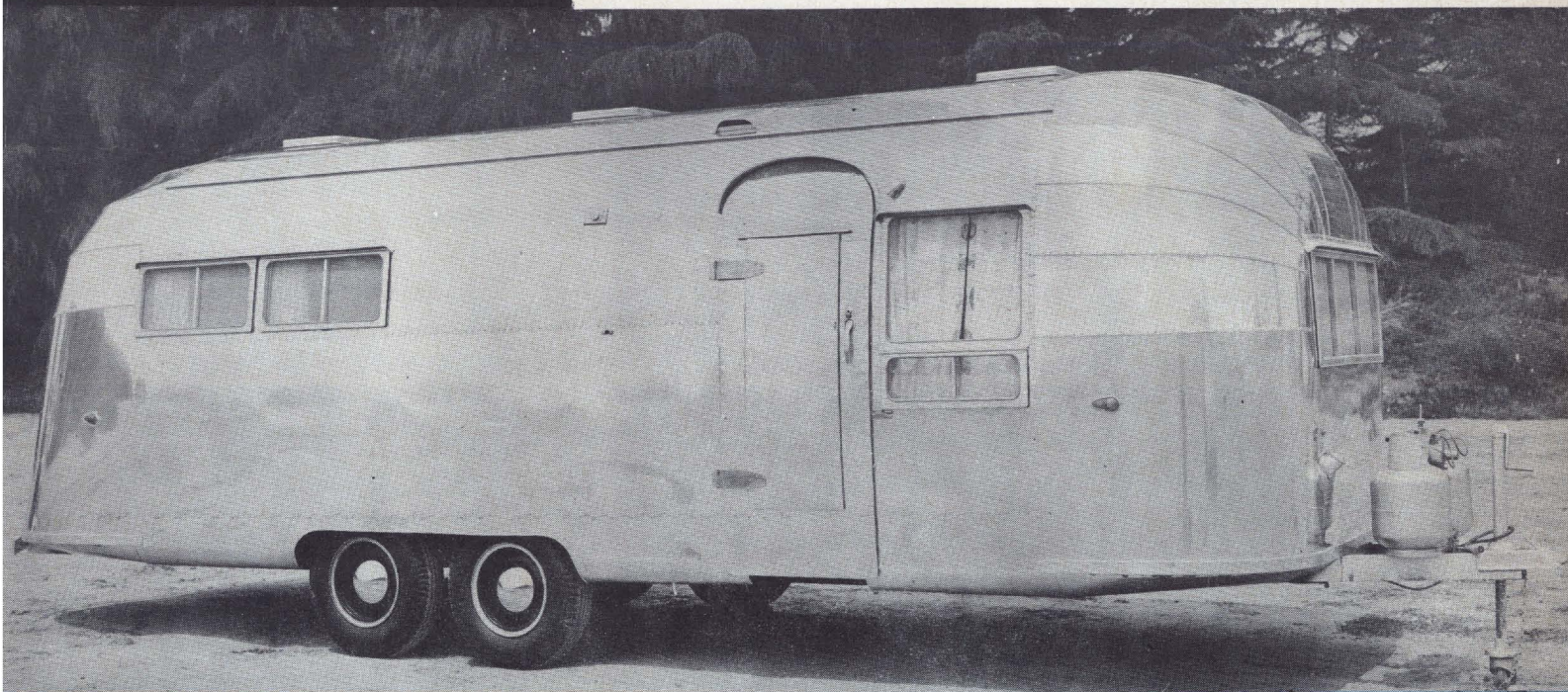


THE
SENSATIONAL
ALL-NEW
AIRSTREAM

26-ft. Overlander



DESIGNED AND BUILT TO TRAVEL IN COMFORT

Here is an exciting new model that enables you to take all the comforts of home with you wherever you go. Available in both twin and double bed models, the Airstream Overlander was designed by travelers with an eye for both mobility and luxurious living. Every new feature has been travel-tested on Wally Byam Caravans all over the world. It is another great triumph of design by Airstream—since 1932 builders of the world's finest lightweight trailers.

SPECIFICATIONS AND STANDARD EQUIPMENT*

| | | | |
|--------------------------|---------------------------------|---------------------------------|------------------------------|
| Overall length—26 ft. | Shower over tub | Inlaid linoleum • Porch light | Large closets • Double tanks |
| Body length—23 ft. | Toilet | Double sinks • Outside outlet | 16-ft. awning rail |
| Overall weight—3850 lbs. | Stainless steel door hinges | Tilt top table | Gear operated windows |
| Hitch weight—260 lbs. | 8-cu. ft. electric refrigerator | Hot water heater | All airfoam mattress |
| Box section frame | Wall mount stove fan | Steel bumper | Aircraft curtains |
| Two 1½" axles | Apartment stove • Trunk door | Full screen door • 3 roof vents | Touch control built-in step |
| Four 700-15 6 ply tires | Divan front | Formica galley tops | Warp-free hollow core doors |
| Brakes | | | 2" aircraft insulation |

AND ALWAYS THESE FAMOUS AIRSTREAM FEATURES:

All-metal, all aluminum construction • All-riveted body • All-steel undercarriage • All-over Aerocore Fiberglass insulation • Vibration-proof fastenings.

*Subject to change without notice



AIRSTREAM
TRAILERS, INC.

12804 E. Firestone Blvd. • Norwalk, Calif.
(Santa Ana Freeway at Rosecrans)

SINCE 1932 THE WORLD'S FINEST LIGHTWEIGHT TRAVEL TRAILERS

