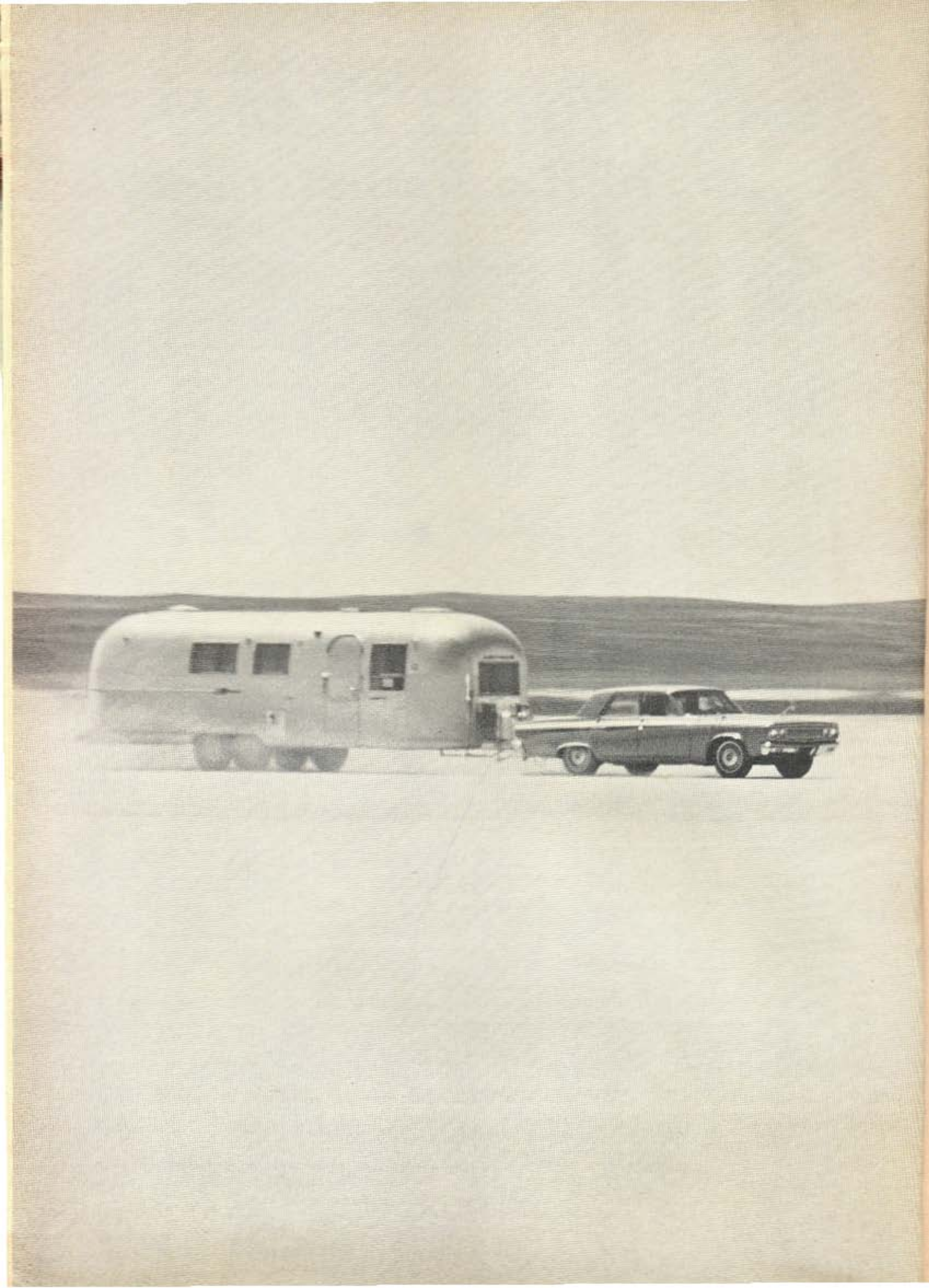




1966 26' D INTERNATIONAL



Airstream 1967

more dramatic engineering improvements than any other single year!

GO AIRSTREAM—THERE'S NEVER BEEN A BETTER REASON...THERE'S NEVER BEEN A BETTER TIME!

You don't have to wait for the travel trailer of the future to catch up to you. The 1967 Airstream is here...and when you go Airstream, you're years ahead in engineering, years ahead in luxurious travel comforts! The new Super Dura-Torque axle is unquestionably the greatest improvement in running gear in the history of travel trailers. It provides 50% more shock absorption capacity resulting in a cloud-nine ride! This means smoother towing, less vibration than ever before. The exclusive Aerostress chassis is still the lightest in weight and toughest in tensile strength in the industry. The improved, horizontally-mounted shock absorbers require smaller wheel housings and actually increase interior floor space. The 1967 Airstream is winter proofed too. Water line and drain line harness are protected against extreme elements for worry-free travel in winter temperatures. All trunk doors are sealed and insulated. Drop-center, truck type wheels with tubeless tires offer 40% greater load-carrying capacity than conventional wheels and 12-volt electric brakes on all wheels give you two independent braking systems. Safety glass windows by Corning are contoured to the streamline shape of the Airstream. This new

glass is remarkably tougher, safer than ordinary safety glass. The improved Everflo sealed combustion heater requires 60% less power. A super sensitive, wall-mounted thermostat and concealed heat ducts provide even temperatures from end to end. In addition to providing 110V or 12V power automatically, the 1967 Uni-Volt system now has built-in automatic re-setting circuit breakers so there are no fuses to blow out or replace. All light switches in 1967 are 3-way so you can choose any degree of illumination. This important feature also lets you control the amount of power you wish to use. Interiors have changed too in 1967. Fine woods, decorator fabrics and deep pile carpets are exquisitely harmonized to create a luxurious living area that challenges comparison. And the dramatic new "penthouse" bathroom is the most lavish bathroom on wheels! By the way...all these years-ahead features are **standard equipment!** There's much more, of course, but now it's time to see and try the 1967 Airstream for yourself. And remember, the 'LIVE NOW' PURCHASE PLAN lets you make your travel dreams come true **today**. See your Airstream dealer for a free demonstration ride soon.

Enjoy the extra benefits of owning an Airstream...fun, friendship and adventure through Wally Byam Clubs, Caravans and Rallies

*Free! Big, new catalog in living color.
Thrilling as a world cruise. Write today!*

AIRSTREAM INC

Write nearest factory: 130 Church St., Jackson Center, Ohio • 12804 E. Firestone Blvd., Santa Fe Springs 9, Calif.

50c

Trail-R-News

August, 1966
ZONE 11

The complete Mobile Home and Travel Trailer magazine

U.S. MAIL PERMIT NO. 401
727 WASHINGTON AVE
BETHLEHEM, PA 18010
EST. 1955



Show Time in Elkhart!

OUR 49th STATE—Part II

*The
Airstream
Album
Cover Story—Page 11*

The Airstream Affair

COVER STORY

By ART GRIFFIN

Beverly would fit right into a James Bond series . . . yellow stretch pants, slinky walk, purple blouse and all.

We weren't at all surprised when she walked into the office and said she was going to call our cover story the "Airstream Affair." In case you haven't read the masthead recently, "Bev" is the flamboyant T-R-N feature editor and will proudly admit to having seen "Thunderball" five times.

"Zatso? Why not call it the Caddy Caper in honor of the favorite combo of Cads and Airstreams?" we ask.

"That's gross," the blonde retorted. "Capers went out with Damon Runyan, and besides 'affairs' are sexier, like the Airstream. I really wanted to call it the 'Affair with an Airstream' but after all of those letters about the last Vegas cover, I knew that would never do."

We couldn't argue with either point.

Bev then went on to tell us why she thought the Airstream cover story should have a James Bond theme.

"Why, gee, Mr. Griffin, the Airstream is a natural for 'intrigue' . . . all those beautiful sliding doors, the blood-stain-proof formica and fiberglass interiors, the rich and yummy decor . . . and I can just see that six-foot reefer filled with champagne."

"Yeh," we say, warming to the idea. "And maybe we could even have a helium bag pop from the roof and turn the thing into a blimp!"

"And a jet pad and a hidden steering wheel that suddenly turns the trailer into a sleek, amphib dragster," Bev gurgles.

"Yeh, and what we couldn't do with that new 'Penthouse' bathroom," we say. "Can't you just see one of Sean's lovely broads taking a milk bath in that full-size tub or combing her raven tresses in front of the luxurious vanity mirror?"

Then Bev's eyes really light up. "And how about that hidden toilet? Boy, between that and the hidden dirty-clothes hamper, we could really have some fun."

We could see that things COULD be getting out of hand.

"Now wait a minute, Bev, we can't do the entire story on the interior of the Airstream. After all, that beautiful cover shot isn't exactly one to lend itself to the blood and guts treatment. Here is a gorgeous color picture of an Airstream International in a peaceful meadow in Wyoming's Grand Tetons. . . ."

"But look, Mr. Griffin," Bev exclaims, pointing to the cover proof. "Couldn't that gal be pointing a phoney camera at the cowboy, and couldn't it be loaded with tranquilizer pellets that would turn him and his horse into coramic statuary so that they could be taken back to civilization?"

"OK, already yet," we mumble in resignation. "Call it the 'Airstream Affair!'"

And that's the way it is when you're dealing with a female editor. [Nuts!]



Airstream points with pride to this beautiful bathroom, standard in all Safari and International models. Proclaimed "most luxurious ever developed for a travel trailer," it features a full-size tub, hidden toilet and clothes hamper, free-sliding door



Lovely Kathy Rhor adds extra touch to Airstream's beautiful 22-foot, 1967 Safari with bleached ash woodwork, lined and washable curtains, full-size reefer, twin beds. New International series has full carpeting, American cherry woodwork



Self-Containment...

Pioneered and perfected by Airstream...

refined even more for 1967!

GO AIRSTREAM — THERE'S NEVER BEEN A BETTER REASON... THERE'S NEVER BEEN A BETTER TIME!

No one knows more about self-containment than Airstream. But that's only natural... we invented it! When you go Airstream, all the luxurious comforts of home go with you... to the mountains, to a rushing trout stream, to a desolate beach... or any other place you decide to call your own. Wherever you wander, comfortable beds, complete bathroom, hot and cold water, heat, lights and refrigeration are all yours to enjoy. Again in 1967 Airstream offers many important luxury features you won't see on other travel trailers for many years to come, yet you can enjoy them all right now in an Airstream. The new penthouse bathroom is a good example. This new bathroom rivals the one at home and features a full size bathtub, shower and concealed toilet. The Uni-Volt system lets you turn on every light, every fan whether you are hooked up or not. When you are hooked up, the Uni-Volt automatically recharges the heavy duty 90 ampere battery to a safe level. New three-way lights let you choose any degree of illumination and control the amount of battery power you use when not hooked up. The marine water pump silently delivers 3 gallons of water per minute under constant pressure. This rugged pump conserves battery power as it operates only when wa-

ter is running. The auxiliary telephone shower with a shut-off valve and auxiliary toilet hand spray conserve precious water too. An effective water purifier is standard equipment on International models. The remarkable Everflo heater provides even temperatures throughout and pulls 60% less battery power. Other features that will add tremendously to your travel pleasure are a water level gauge; a pressure regulator that automatically eliminates the possibility of high water pressure; a battery condition meter that tells you the charge level of your battery at all times; automatic switch-over butane gas bottle regulator that tells you when one bottle is empty; a gas range, water heater and refrigerator that were tested around the world. These are only a few of the important luxury features in the 1967 Airstream. There are many more. See and try the 1967 Airstream and you won't travel any other way. Choose from 12 exciting models from the 17-foot Caravel to the 30-foot Sovereign. Use the "Live Now" Purchase Plan if you prefer. This bold new finance plan lets you make your travel dreams come true *today* at a preferred interest rate of only 4¾%. See your Airstream dealer for a free demonstration ride right away!

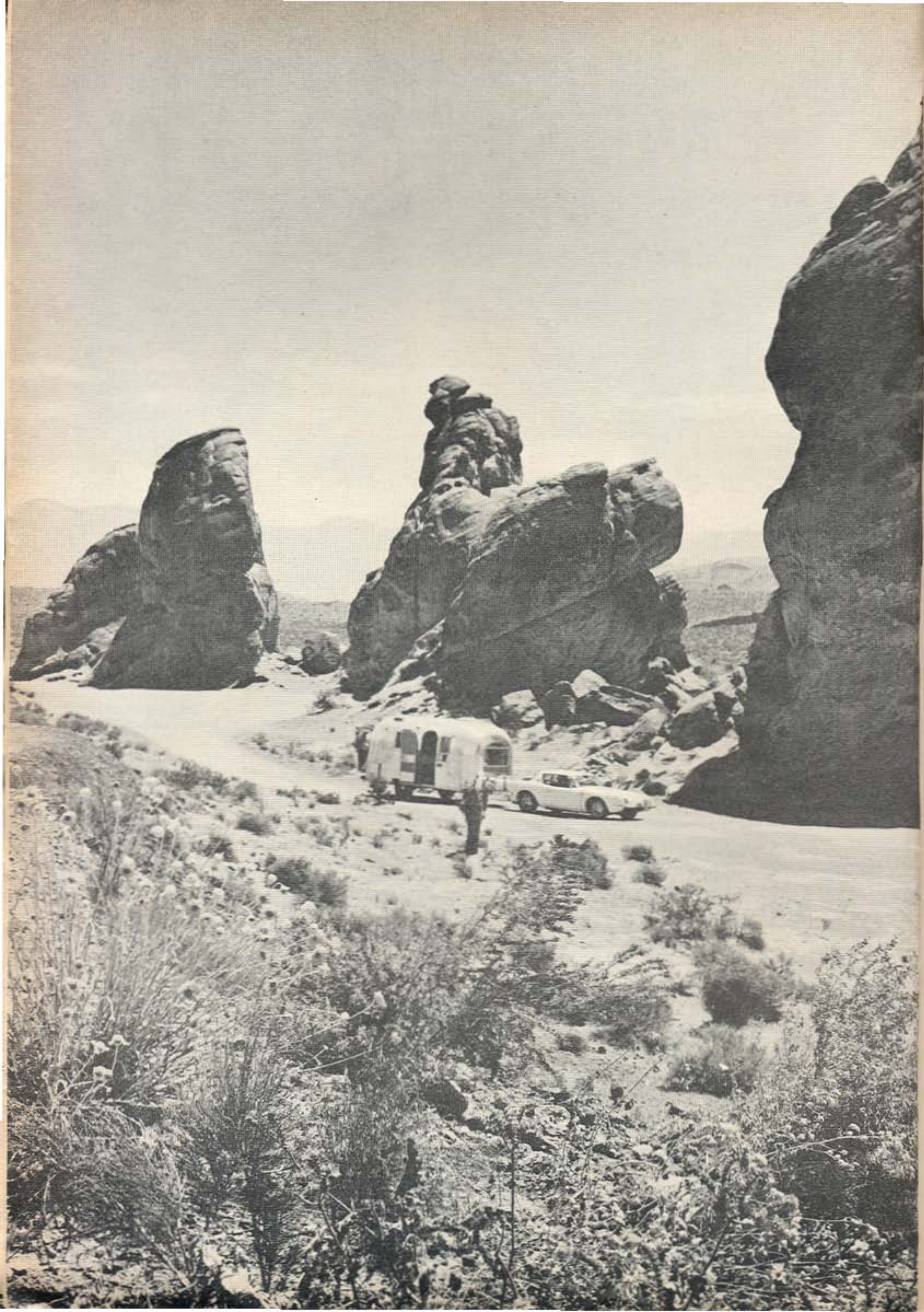
ENJOY THE EXTRA BENEFITS OF OWNING AN AIRSTREAM...

FUN, FRIENDSHIP AND ADVENTURE THROUGH WALLY BYAM CLUBS, CARAVANS AND RALLIES

Free! Big, new catalog in living color. Thrilling as a trip around the world. Write today!

AIRSTREAM INC.

Write nearest factory: 160 Church St., Jackson Center, Ohio / 12804 E. Firestone Blvd., Santa Fe Springs 3, California



Go Airstream... and enjoy these 6 extra benefits!

CERTIFIED SERVICE CENTERS • CARAVANNER INSURANCE • HIGHER RESALE VALUE

LIFETIME WARRANTY • 'LIVE NOW' PURCHASE PLAN • WALLY BYAM CARAVANS, CLUBS AND RALLIES

When you go Airstream, you're eligible to take advantage of all six extra benefits that only Airstream offers. Look them over and see if you don't agree that these important extras help make your Airstream a practical investment for a lifetime of pleasure.

Certified Service Centers: A brand new idea in customer service! We at Airstream have long believed that after-sales-service is part of what you're buying when you buy a travel trailer. Each of our two factories can, of course, perform any service and every one of the 175 Airstream dealers can do nominal repair work. We're proud to say that Airstream is the first travel trailer manufacturer to recognize the need for nationwide service and establish Certified Service Centers throughout the country. To date, over fifty-five of these Certified Service Centers are spread out from coast to coast to form a national network of approved repair stations. The Certified Service Centers are not only totally qualified in all phases of Airstream maintenance, but they are also recognized as official service agents by the manufacturers of Airstream components. Here you will find capable, factory-trained personnel for all guarantee work, major repairs and service on your Airstream, all equipment and components.

Caravanner Insurance: As an Airstream owner, you are eligible to take advantage of special low-cost, broad coverage insurance offered by the Caravanner Travel Trailer Plan. This remarkable plan provides you with the protection of broad coverage for substantially less than other broad form policies currently available... in most cases nearly 30%. Caravanner Insurance is not cut-rate insurance or so-called "bargain" insurance. Airstream's safety features and built-to-last construction are the biggest reasons Caravanner Insurance can offer such complete protection at such great savings. And because Caravanner Insurance knows the product, you can be sure you're going to get fair settlements and fast, friendly service. Wherever you go... U.S.A.... Canada... Mexico... you'll enjoy complete protection and immediate service.

Higher Resale Value: Since 1932 Airstream has been recognized as the undisputed leader of the travel

trailer industry. As an Airstreamer, you are instantly recognized as a discriminating traveler and receive a warm welcome wherever you go. It is this kind of prestige that keeps the value of your Airstream *up* and depreciation *low*. In fact, no other travel trailer maintains such a high value after purchase. No wonder Airstream is the most wanted travel trailer in the world! When you buy an Airstream, you're making an investment that pays big dividends in pleasure as well as in dollars and cents.

Lifetime Warranty: Airstream was the first manufacturer to offer a lifetime warranty. The very first Airstream that Wally Byam built carried a lifetime warranty; as a matter of fact, no Airstream has ever been sold without one! The Airstream warranty is straight and to the point; it guarantees that your new Airstream is free from defects in material and Airstream workmanship. And the guarantee is in effect for as long as you live! Though you may be planning for the future, you can buy your Airstream *today* and enjoy it *right now*, assured that your investment is going to last a lifetime... we guarantee that it will!

"Live Now" Purchase Plan: Now you can make your travel dreams come true *today*! This exclusive new feature lets you purchase the Airstream of your choice for as little as 25% down with up to 5 years to pay at a low interest rate of only 4 3/4% per year, as administered by Commercial Credit Corp. And remember... your purchase is guaranteed for as long as you live!

Wally Byam Caravans, Clubs and Rallies: Only Airstream offers such a wide choice of professionally coordinated Caravans to the most fascinating places of the world. Only Airstream offers 85 permanent Club Units in the United States, five in Canada and one in Mexico.

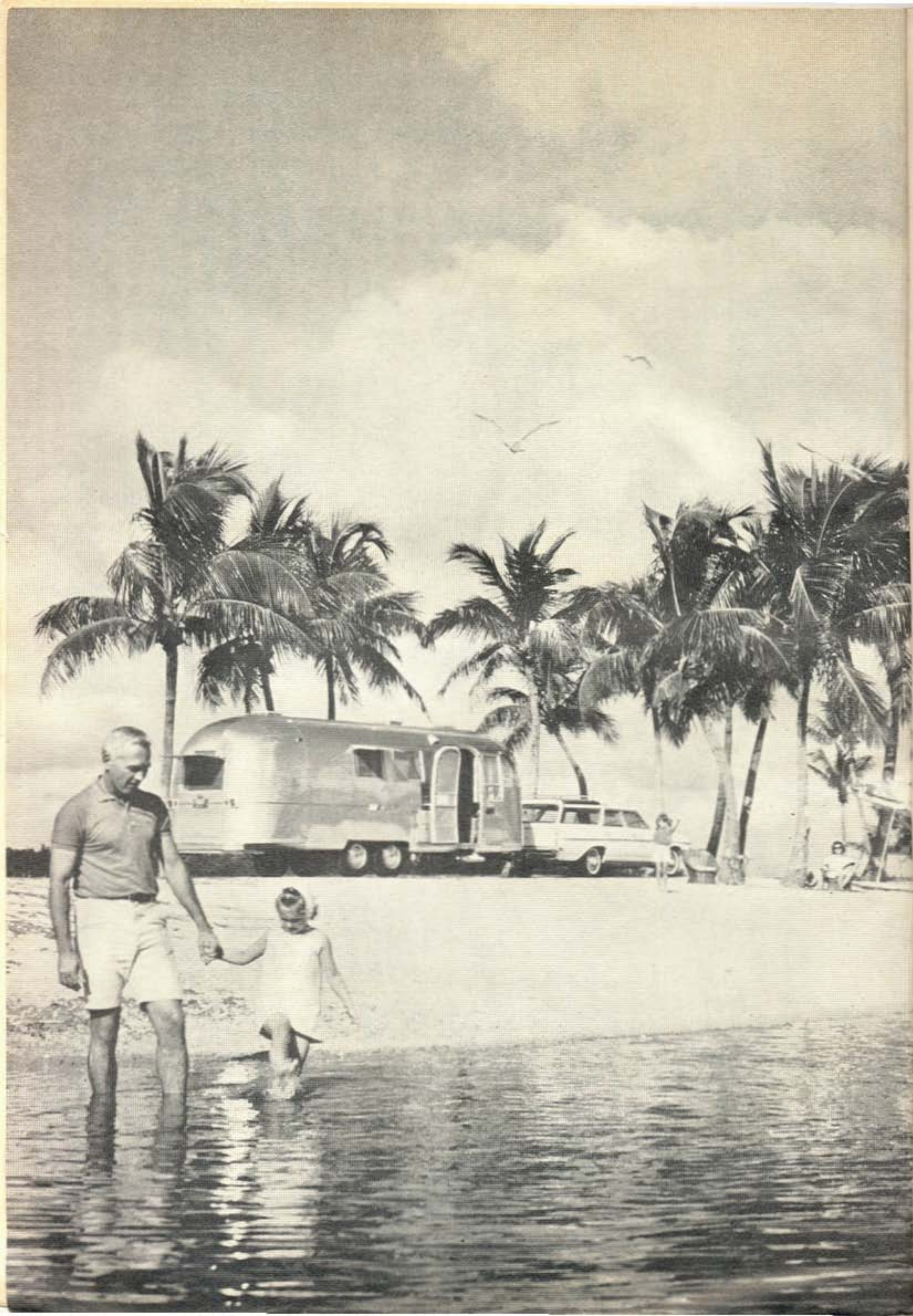
The 1966 Airstream is the finest Airstream in travel trailer history. The six extra benefits are offered exclusively by Airstream. Why should you settle for less? You're invited to inspect the exciting 1966 models now... and you'll say Airstream is the logical choice. See your Airstream dealer for a free demonstration ride right away!

*Free! Big, new catalog in living color.
Thrilling as a world cruise. Write today!*

AIRSTREAM INC

Write nearest factory: 130 Church Street, Jackson Center, Ohio • 12804 East Firestone Boulevard, Santa Fe Springs 9, California

U
4
P



Announcing a bold new finance plan...

AIRSTREAM'S EXCLUSIVE
'LIVE NOW'
PURCHASE PLAN

As little as
25%
down

Preferred interest rate—
only **4 $\frac{3}{4}$ %** per year
administered by
Commercial Credit Corp.

Up to
5 years
to pay

If you have long dreamed of travel adventure... if you have promised yourself that you would someday take time out to "live a little"... you don't have to put it off until another day. Airstream's exclusive 'LIVE NOW' PURCHASE PLAN lets you make all your travel dreams come true right now! Here's how it works. Go to your Airstream dealer and choose the model that's just right for you. If you already own a trailer, chances are it will easily make the 25% down payment. Then pay as little as \$56 a month including vehicle insurance and credit life insurance. You can take up to 5 years to pay at a preferred interest rate of 4 $\frac{3}{4}$ % per year. And you're protected by credit life insurance at the lowest current rate. Doesn't the 'LIVE NOW' PURCHASE PLAN make a lot of sense for you? Now there is no need to deny yourself all the pleasure an Airstream can bring until "that" day comes along when you decide to retire. Airstream's 'LIVE NOW' PURCHASE PLAN lets you buy your Airstream *now*, while your earning power is

at its highest. Airstream's 'LIVE NOW' PURCHASE PLAN lets you realize your dreams of travel adventure *today*... not some distant "tomorrow" that may never come. And your investment is sound because your Airstream is guaranteed for as long as you live! The time has come to stop dreaming and start *doing*! Select the Airstream of your choice today; then use the 'LIVE NOW' PURCHASE PLAN and go... do... live!

Enjoy the extra benefits of owning an Airstream... fun, friendship and adventure through Wally Byam Caravan Club, Caravans and Rallies.

FREE! BIG NEW CATALOG IN FULL COLOR. THRILLING AS A TRIP AROUND THE WORLD. WRITE TODAY!

AIRSTREAM INC.

Write nearest factory:

130 Church St., Jackson Center, Ohio

12804 E. Firestone Blvd., Santa Fe Springs 9, California

**Now you can really make your travel dreams come true today...
see your Airstream dealer right away!**

The new 1966 Airstream Caravel

17 FEET OF ADVENTURE!

Total self-containment and luxurious accommodations for six that a compact car can tow!

The trailering public demanded it but only Airstream came up with the answer...the new Airstream Caravel for 1966! The new 17-foot Caravel is the first travel trailer big enough for a family of six yet light enough to be towed with a compact car. The new Caravel weighs in at only 2350 pounds with a hitch weight of only 250 pounds. But don't let the small size fool you. The Caravel is every inch an Airstream with the same quality features and the same go-anywhere construction found in larger Airstreams. Inspect the new Caravel from hitch ball to bumper. On the inside you'll notice the spaciousness of standard width and headroom, the airiness of five huge windows, two double beds with foam mattresses (two fold-up bunks are optional), an ample amount of storage space, you'll also notice a full-size Formica-topped galley with a 3-burner range and oven, a full-size bathroom with toilet, sink and shower, and a large table that accommodates six and disappears out of the way when not in use. The new vinyl-laminated walls and ceilings enrich the interior and clean with a touch of a damp cloth. Like all Airstreams, the Caravel offers the convenience of total self-containment... hot and cold water, heat, refrigeration and Uni-Volt lighting which means

power anytime, anywhere—automatically... all totally independent of outside sources. On the outside you'll notice Airstream's famous structural alloy aluminum, contoured safety glass windows, the exclusive Dura-Torque axle, shock absorbers and electric brakes on each wheel. In 1966 a full-size screen door and foldaway step are standard equipment. And the new Caravel costs less to own than you ever imagined. If you wish, take advantage of Airstream's 'LIVE NOW' PURCHASE PLAN!—a bold new finance program that lets you take up to 5 years to pay at a preferred interest rate of only 4¾% per year! Compare the new Caravel feature for feature and dollar for dollar with any other travel trailer and you'll choose the Caravel. The Caravel is a limited edition and is produced only once a year, so you must order now to avoid disappointment. See and try the new 1966 Caravel at your Airstream dealer today!

AIRSTREAM INC.

Write nearest factory:

130 Church St., Jackson Center, Ohio
12804 E. Firestone Blvd., Santa Fe Springs 9, California

Enjoy the extra benefits of owning an Airstream
... fun, friendship and adventure through
Wally Byam Caravan Club, Caravans and Rallies.

*Free! Big new catalog in full color. Thrilling
as a trip around the world. Write today!*





LEFT

Formica-topped galley offers 3-burner range and oven. Standard width and headroom and five big windows give the inside a feeling of spaciousness!

RIGHT

New Airstream Caravel combines small size with travel/living comfort for a family of six!



ABOVE

New 17-foot Airstream Caravel is built to go anywhere yet light enough for a compact to tow!

LEFT AND RIGHT

Full-size bathroom includes sink, shower and dependable marine toilet with waste holding tank!

OPPOSITE PAGE

Roomy dining table easily accommodates six persons, disappears out of the way when not in use!

Tows a load as big as a house carries everybody in the house



The Travelall® by International®

There's strength enough and power enough in the big family wagon to haul a travel trailer...or a boat trailer...or a camper trailer.

It can tow big loads at highway speeds without wagging its tail. Be-

cause we gave the TRAVELALL a huskier frame and sturdier suspension than most wagons. And with a powerful INTERNATIONAL engine plus all-wheel drive, you can even go where roads don't go.

Inside, the TRAVELALL is also built for going places—with nine travelers plus their baggage, or six campers plus the camp, or three fishermen plus

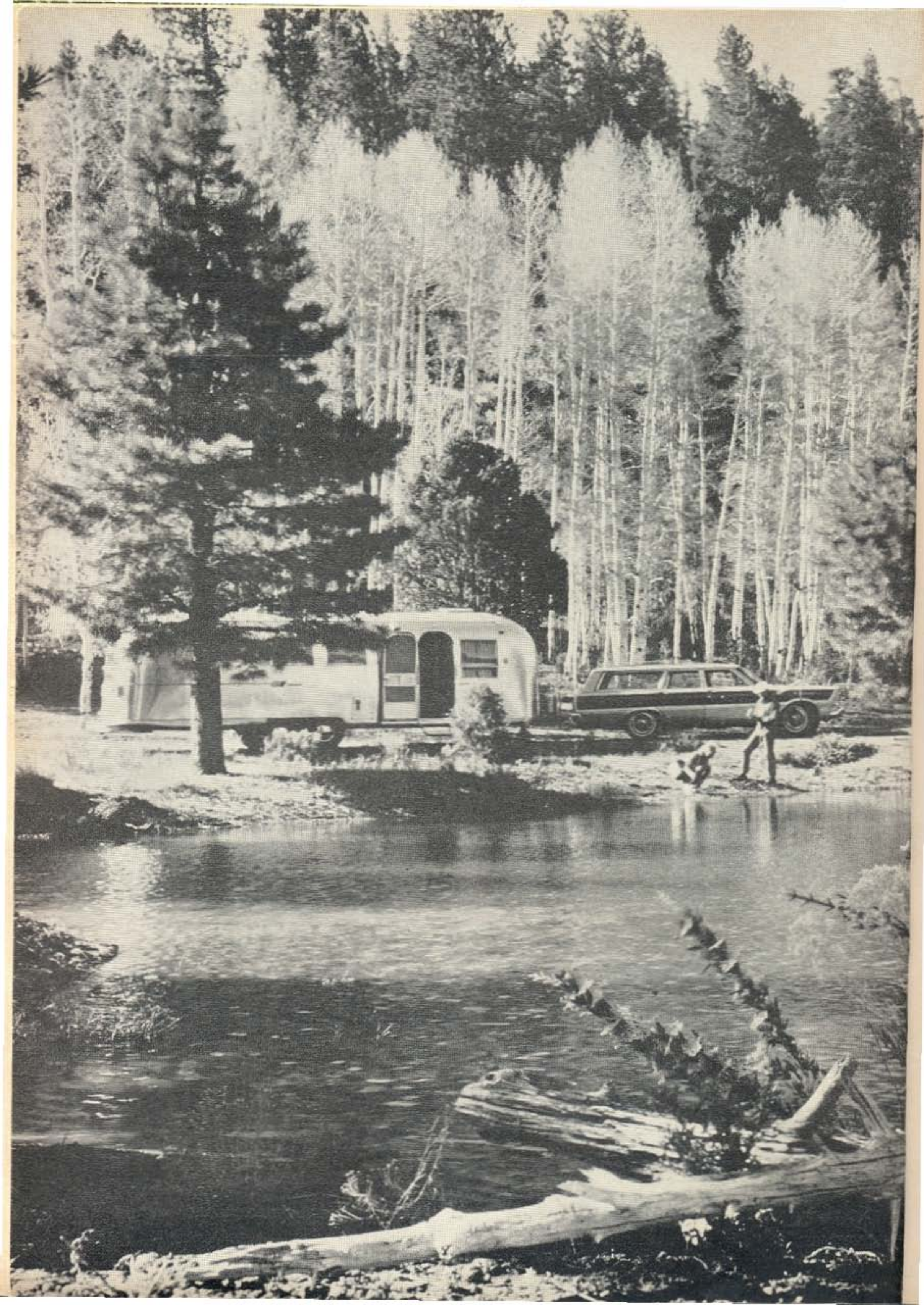
their boat. And it's easy to get into.

You'll never know how good or different this big family wagon *really* is—until you try it. So try it. Any INTERNATIONAL Dealer is ready to show you what it can do.



**INTERNATIONAL HARVESTER
COMPANY**

CHICAGO, ILLINOIS



***4³/₄ % FINANCING
STILL AVAILABLE!***

***AIRSTREAM'S
EXCLUSIVE
'LIVE NOW'
PURCHASE PLAN***

***Preferred interest rate — only 4³/₄% per year
administered by Commercial Credit Corp.***

As little as 25% down

Up to 5 years to pay

If you have long dreamed of travel adventure . . . if you have promised yourself that you would someday take time out to "live a little" . . . you don't have to put it off until another day. Airstream's exclusive 'Live Now' Purchase Plan lets you make all your travel dreams come true right now! Here's how it works. Go to your Airstream dealer and choose the model that's just right for you. If you already own a trailer, chances are it will easily make the 25% down payment. Then pay as little as \$56 a month including vehicle insurance and credit life insurance. You can take up to 5 years to pay at a preferred interest rate of 4³/₄% per year. And you're protected by credit life insurance at the lowest current rate. Doesn't the 'Live Now' Purchase Plan make a lot of sense for you? Now there is no need to deny yourself all the pleasure an Airstream can bring until "that" day comes along when you decide to retire. Airstream's 'Live Now' Purchase Plan lets you buy your Airstream now, while your earning power is at its highest.

Airstream's 'Live Now' Purchase Plan lets you realize your dreams of travel adventure **today** . . . not some distant "tomorrow" that may never come. And your investment is sound because your Airstream is guaranteed for as long as you live! The time has come to stop dreaming and start **doing**! Select the Airstream of your choice today; then use the 'Live Now' Purchase Plan and go . . . do . . . live!

Enjoy the extra benefits of owning an Airstream . . . fun, friendship and adventure through Wally Byam Caravans, Clubs and Rallies.

FREE! BIG NEW CATALOG IN FULL COLOR. THRILLING AS A TRIP AROUND THE WORLD. WRITE TODAY!

AIRSTREAM INC.

Write nearest factory: 130 Church St., Jackson Center, Ohio
12804 E. Firestone Blvd., Santa Fe Springs 9, California.

**Go Airstream — there's never been a better reason...
there's never been a better time. See your Airstream dealer right away!**



exclusive
AIRSTREAM
FUN FIESTA!

Discover Mexico!

**JOIN A WALLY BYAM CARAVAN...THE EXCITING WAY TO TRAVEL!
HEADING FOR ADVENTURE NOVEMBER 15TH AND DECEMBER 1ST**

Explore the mysterious ruins of the great Aztec civilization in Teotihuacan . . . bring home a fighting marlin for your mantle from Mazatlan . . . visit the fascinating shops along fashionable Paseo de la Reforma in cosmopolitan Mexico City. Capture the real Mexico on a Wally Byam Caravan — an extra benefit of owning an Airstream! You have your choice of two fabulous Caravans this winter. On November 15th the Wally Byam Caravan will leave Tucson, Arizona and head down Mexico's west coast. Destination . . . high adventure! Soak up sunshine in tropical Mazatlan where the jungle meets the sea. Swim, fish, dive or just relax on the beach and let a native boy bring you fresh coconuts. You'll stop in picturesque Guadalajara, famous for colorful glassware and Lake Patzcuaro where butterfly boats dot the blue water with color. The sentimental songs of the mariachis will follow you all the way to Mexico City. Another fun-packed Wally Byam Caravan will rendezvous at McAllen, Texas and work its way down Mexico's east coast to Mexico City. Along the way, you'll discover some of Mexico's most fasci-

nating places. In Queretaro a treasure of opals, topaz, amethyst and other gems are waiting for you at bargain prices. Your camera will never stop clicking in Oaxaca as strange Indians fill the marketplace dressed in their exotic regional costumes. You'll explore Vera Cruz, where past and present work their magic to lure you from wide boulevards to the narrow cobblestone streets laced with iron balconies. The Wally Byam Caravanners are a wonderful source of new friends and good fellowship. Your self-contained Airstream will provide all the luxurious comforts of home. There is no better time to see Mexico . . . there is no better way to feel the pulsebeat of this charming land. Take advantage of Airstream's exclusive 'Live Now' Purchase Plan, a bold new finance plan that lets you make your travel dreams come true today, not mañana. Take up to 5 years to pay at a preferred interest rate of only $4\frac{3}{4}\%$ per year as administered by Commercial Credit Corp. Whichever Caravan you choose, it will be packed with romance and high adventure. See your Airstream dealer pronto . . . we'll be expecting you.

*Free! Big, new catalog in living color.
Thrilling as a trip around the world. Write today!*

AIRSTREAM INC.

Airstream 1967

more luxury... more comfort than any other single year!

The new 1967 Airstream is here...and it comes loaded with custom features you won't see on other travel trailers for years to come! Step into the International...you are surrounded by luxury. Genuine American cherrywood paneling, rich decorator fabrics and deep pile carpeting create a resplendent setting that rivals the most exclusive hotel suite. In 1967 Airstream introduces the most lavish bathroom on wheels...the all-new 'penthouse' bathroom, featuring a dramatic free-form bathtub, shower, concealed toilet and swing-out boudoir mirror. A sliding wood door provides complete privacy and slides completely out of the way when not in use. Airstream's exclusive variable storage feature lets you tailor your storage space to fit your personal requirements. Drawers can be removed to create shelf

space...shelves can be removed to make large open storage areas. New in 1967 are optional Vista-View skylights to fill your living area with cheery sunshine by day, or twinkling stars by night. Airline-type sliding shades close the Vista-View windows when desired. Beautifully textured vinyl-laminated walls and ceilings add drama to the interior decor yet a damp cloth brightens them like new. Inspect the new galley for 1967; you'll say it is pure magnificence! It features vastly increased storage area, popular in-line burner range and stainless steel sinks are standard equipment on all standard production models. The new engineering features in 1967 are impressive too. The improved Super Dura-Torque axle provides 50% more shock absorption capacity resulting in a cloud-nine ride. This means smoother towing, less vibration than ever before! The Aerostress chassis is still the lightest in weight and toughest in tensile strength in the industry. The new Uni-Volt system does away with fuses. Choose from 12 exciting models including the 17-foot Caravel...a completely re-designed 20-foot Globetrotter...and other exciting models up to the 30-foot Sovereign of the Road. And remember...Airstream and *only* Airstream offers you all these important years-ahead features. Take advantage of Airstream's new 'LIVE NOW' PURCHASE PLAN and make your travel dreams come true today. See your Airstream dealer now!

GO AIRSTREAM—THERE'S NEVER BEEN A BETTER REASON...THERE'S NEVER BEEN A BETTER TIME!



Enjoy the extra benefits of owning an Airstream...fun, friendship and adventure through Wally Byam Clubs, Caravans and Rallies.

Attend the **AIRSTREAM PREVUE 1967** premiere showing of the new Airstream fleet at all Airstream dealers! SEPTEMBER 22, 23, 24, 1966

Write nearest factory: 150 Church St., Jackson Center, Ohio • 12804 E. Firestone Boulevard, Santa Fe Springs 2, California

Airstream 1967

more luxury... more comfort than any other single year!

The new 1967 Airstream is here...and it comes loaded with custom features you won't see on other travel trailers for years to come! Step into the International...you are surrounded by luxury. Genuine American cherrywood paneling, rich decorator fabrics and deep pile carpeting create a resplendent setting that rivals the most exclusive hotel suite. In 1967 Airstream introduces the most lavish bathroom on wheels...the all-new 'penthouse' bathroom, featuring a dramatic free-form bathtub, shower, concealed toilet and swing-out boudoir mirror. A sliding wood door provides complete privacy and slides completely out of the way when not in use. Airstream's exclusive variable storage feature lets you tailor your storage space to fit your personal requirements. Drawers can be removed to create shelf

space...shelves can be removed to make large open storage areas. New in 1967 are optional Vista-View skylights to fill your living area with cheery sunshine by day, or twinkling stars by night. Airline-type sliding shades close the Vista-View windows when desired. Beautifully textured vinyl-laminated walls and ceilings add drama to the interior decor yet a damp cloth brightens them like new. Inspect the new galley for 1967; you'll say it is pure magnificence! It features vastly increased storage area, popular in-line burner range and stainless steel sinks are standard equipment on all standard production models. The new engineering features in 1967 are impressive too. The improved Super Dura-Torque axle provides 50% more shock absorption capacity resulting in a cloud-nine ride. This means smoother towing, less vibration than ever before! The Aerostress chassis is still the lightest in weight and toughest in tensile strength in the industry. The new Uni-Volt system does away with fuses. Choose from 12 exciting models including the 17-foot Caravel...a completely re-designed 20-foot Globetrotter...and other exciting models up to the 30-foot Sovereign of the Road. And remember...Airstream and only Airstream offers you all these important years-ahead features. Take advantage of Airstream's new 'LIVE NOW' PURCHASE PLAN and make your travel dreams come true today. See your Airstream dealer now!

GO AIRSTREAM—THERE'S NEVER BEEN A BETTER REASON...THERE'S NEVER BEEN A BETTER TIME!



Enjoy the extra benefits of owning an Airstream... fun, friendship and adventure through Wally Byam Clubs, Caravans and Rallies.

Attend the **AIRSTREAM PREVUE 1967** premiere showing of the new Airstream fleet at all Airstream dealers! SEPTEMBER 22, 23, 24, 1966

Write nearest factory: 140 Church St., Jackson Center, Ohio • 12804 E. Firestone Boulevard, Santa Fe Springs 1, California

AIRSTREAM INC.

Airstream 1967

**more luxury...
more comfort
than any other
single year!**

The new 1967 Airstream is here...and it comes loaded with custom features you won't see on other travel trailers for years to come! Step into the International...you are surrounded by luxury. Genuine American cherrywood paneling, rich decorator fabrics and deep pile carpeting create a resplendent setting that rivals the most exclusive hotel suite. In 1967 Airstream introduces the most lavish bathroom on wheels...the all-new 'penthouse' bathroom, featuring a dramatic free-form bathtub, shower, concealed toilet and swing-out boudoir mirror. A sliding wood door provides complete privacy and slides completely out of the way when not in use. Airstream's exclusive variable storage feature lets you tailor your storage space to fit your personal requirements. Drawers can be removed to create shelf

space...shelves can be removed to make large open storage areas. New in 1967 are optional Vista-View skylights to fill your living area with cheery sunshine by day, or twinkling stars by night. Airline-type sliding shades close the Vista-View windows when desired. Beautifully textured vinyl-laminated walls and ceilings add drama to the interior decor yet a damp cloth brightens them like new. Inspect the new galley for 1967; you'll say it is pure magnificence! It features vastly increased storage area, popular inline burner range and stainless steel sinks are standard equipment on all standard production models. The new engineering features in 1967 are impressive too. The improved Super Dura-Torque axle provides 50% more shock absorption capacity resulting in a cloud-nine ride. This means smoother towing, less vibration than ever before! The Aerostress chassis is still the lightest in weight and toughest in tensile strength in the industry. The new Uni-Volt system does away with fuses. Choose from 12 exciting models including the 17-foot Caravel...a completely re-designed 20-foot Globetrotter...and other exciting models up to the 30-foot Sovereign of the Road. And remember...Airstream and *only* Airstream offers you all these important years-ahead features. Take advantage of Airstream's new 'LIVE NOW' PURCHASE PLAN and make your travel dreams come true *today*. See your Airstream dealer now!

GO AIRSTREAM—THERE'S NEVER BEEN A BETTER REASON...THERE'S NEVER BEEN A BETTER TIME!



Enjoy the extra benefits of owning an Airstream...fun, friendship and adventure through Wally Byam Clubs, Caravans and Rallies.

Attend the **AIRSTREAM PREVUE 1967** premiere showing
of the new Airstream fleet at all Airstream dealers! SEPTEMBER 22, 23, 24, 1966

Write nearest factory: 140 Church St., Jackson Center, Ohio • 12804 E. Firestone Boulevard, Santa Fe Springs 1, California

AIRSTREAM INC

Fun is all around you go Airstream!

TAKE A FREE DEMONSTRATION RIDE AND
DISCOVER REAL TRAVEL ADVENTURE!



Fun is a swirling trout stream when *you've* got a three pounder in the net. It's *you* in some faraway land you've only read about. Fun is exploring new places, seeing new faces...and it's lazy days under the sun. When you own an Airstream travel trailer, all your dreams of travel adventure suddenly become practical reality! This is because everything that traveling requires goes right along with you. Enjoy comfortable beds, complete bathroom with toilet, tub and shower, hot and cold water, heat, bright lights and refrigeration...all completely independent of outside connections! You can eat, sleep, bathe, shower, stretch out and relax wherever you are and whenever you want! So dream a dream of faraway places...of new friends and interests...and when just dreaming no longer satisfies that burning desire to travel, go Airstream and watch all your travel dreams come true! Have you ever wondered what it's like to tow a lightweight Airstream? Your nearby Airstream dealer invites you to come in and try one on the road yourself. Come in soon...then hitch up and head for the fun!



FREE!

Send for new picture
book color catalog, thrill-
ing as a world cruise!

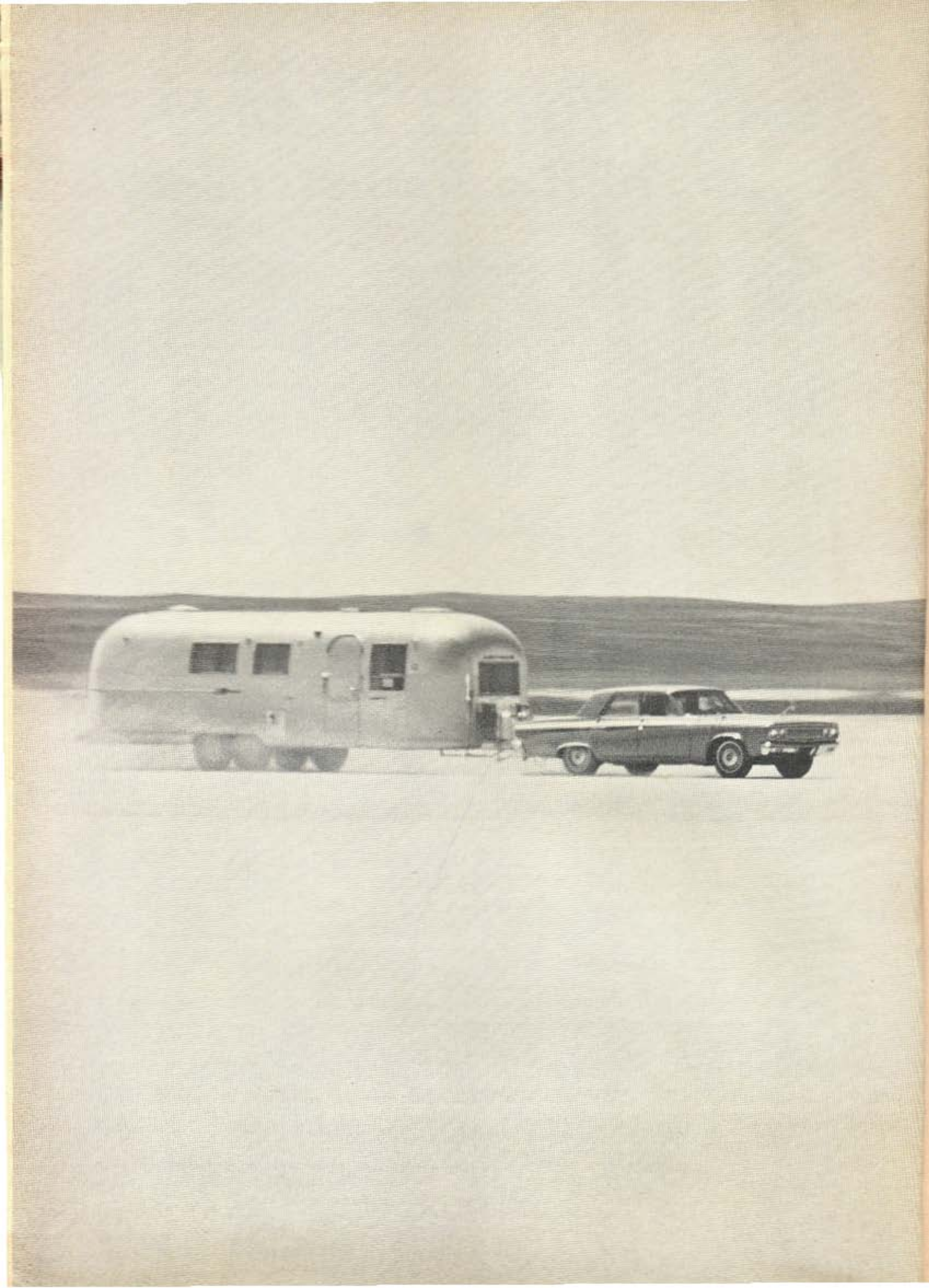
"For extra fun join a Wally Byam Caravan"

AIRSTREAM INC.

180 CHURCH STREET, JACKSON CENTER, OHIO
12804 E. FIRESTONE, SANTA FE SPRINGS 7, CALIF.



1966 26' D INTERNATIONAL



Airstream 1967

more dramatic engineering improvements than any other single year!

GO AIRSTREAM—THERE'S NEVER BEEN A BETTER REASON...THERE'S NEVER BEEN A BETTER TIME!

You don't have to wait for the travel trailer of the future to catch up to you. The 1967 Airstream is here...and when you go Airstream, you're years ahead in engineering, years ahead in luxurious travel comforts! The new Super Dura-Torque axle is unquestionably the greatest improvement in running gear in the history of travel trailers. It provides 50% more shock absorption capacity resulting in a cloud-nine ride! This means smoother towing, less vibration than ever before. The exclusive Aerostress chassis is still the lightest in weight and toughest in tensile strength in the industry. The improved, horizontally-mounted shock absorbers require smaller wheel housings and actually increase interior floor space. The 1967 Airstream is winter proofed too. Water line and drain line harness are protected against extreme elements for worry-free travel in winter temperatures. All trunk doors are sealed and insulated. Drop-center, truck type wheels with tubeless tires offer 40% greater load-carrying capacity than conventional wheels and 12-volt electric brakes on all wheels give you two independent braking systems. Safety glass windows by Corning are contoured to the streamline shape of the Airstream. This new

glass is remarkably tougher, safer than ordinary safety glass. The improved Everflo sealed combustion heater requires 60% less power. A super sensitive, wall-mounted thermostat and concealed heat ducts provide even temperatures from end to end. In addition to providing 110V or 12V power automatically, the 1967 Uni-Volt system now has built-in automatic re-setting circuit breakers so there are no fuses to blow out or replace. All light switches in 1967 are 3-way so you can choose any degree of illumination. This important feature also lets you control the amount of power you wish to use. Interiors have changed too in 1967. Fine woods, decorator fabrics and deep pile carpets are exquisitely harmonized to create a luxurious living area that challenges comparison. And the dramatic new "penthouse" bathroom is the most lavish bathroom on wheels! By the way...all these years-ahead features are **standard equipment!** There's much more, of course, but now it's time to see and try the 1967 Airstream for yourself. And remember, the 'LIVE NOW' PURCHASE PLAN lets you make your travel dreams come true **today**. See your Airstream dealer for a free demonstration ride soon.

Enjoy the extra benefits of owning an Airstream...fun, friendship and adventure through Wally Byam Clubs, Caravans and Rallies

*Free! Big, new catalog in living color.
Thrilling as a world cruise. Write today!*

AIRSTREAM INC

Write nearest factory: 130 Church St., Jackson Center, Ohio • 12804 E. Firestone Blvd., Santa Fe Springs 9, Calif.

50c

Trail-R-News

August, 1966
ZONE 11

The complete Mobile Home and Travel Trailer magazine

U.S. MAIL PERMIT NO. 100
727 WASHINGTON AVE
BETHLEHEM, PA 18010
EST. 1955



Show Time in Elkhart!

OUR 49th STATE—Part II

*The
Airstream
Album
Cover Story—Page 11*

The Airstream Affair

COVER STORY

By ART GRIFFIN

Beverly would fit right into a James Bond series . . . yellow stretch pants, slinky walk, purple blouse and all.

We weren't at all surprised when she walked into the office and said she was going to call our cover story the "Airstream Affair." In case you haven't read the masthead recently, "Bev" is the flamboyant T-R-N feature editor and will proudly admit to having seen "Thunderball" five times.

"Zatso? Why not call it the Caddy Caper in honor of the favorite combo of Cads and Airstreams?" we ask.

"That's gross," the blonde retorted. "Capers went out with Damon Runyan, and besides 'affairs' are sexier, like the Airstream. I really wanted to call it the 'Affair with an Airstream' but after all of those letters about the last Vegas cover, I knew that would never do."

We couldn't argue with either point.

Bev then went on to tell us why she thought the Airstream cover story should have a James Bond theme.

"Why, gee, Mr. Griffin, the Airstream is a natural for 'intrigue' . . . all those beautiful sliding doors, the blood-stain-proof formica and fiberglass interiors, the rich and yummy decor . . . and I can just see that six-foot reefer filled with champagne."

"Yeh," we say, warming to the idea. "And maybe we could even have a helium bag pop from the roof and turn the thing into a blimp!"

"And a jet pad and a hidden steering wheel that suddenly turns the trailer into a sleek, amphib dragster," Bev gurgles.

"Yeh, and what we couldn't do with that new 'Penthouse' bathroom," we say. "Can't you just see one of Sean's lovely broads taking a milk bath in that full-size tub or combing her raven tresses in front of the luxurious vanity mirror?"

Then Bev's eyes really light up. "And how about that hidden toilet? Boy, between that and the hidden dirty-clothes hamper, we could really have some fun."

We could see that things COULD be getting out of hand.

"Now wait a minute, Bev, we can't do the entire story on the interior of the Airstream. After all, that beautiful cover shot isn't exactly one to lend itself to the blood and guts treatment. Here is a gorgeous color picture of an Airstream International in a peaceful meadow in Wyoming's Grand Tetons. . . ."

"But look, Mr. Griffin," Bev exclaims, pointing to the cover proof. "Couldn't that gal be pointing a phoney camera at the cowboy, and couldn't it be loaded with tranquilizer pellets that would turn him and his horse into coramic statuary so that they could be taken back to civilization?"

"OK, already yet," we mumble in resignation. "Call it the 'Airstream Affair!'"

And that's the way it is when you're dealing with a female editor. [Nuts!]



Airstream points with pride to this beautiful bathroom, standard in all Safari and International models. Proclaimed "most luxurious ever developed for a travel trailer," it features a full-size tub, hidden toilet and clothes hamper, free-sliding door



Lovely Kathy Rhor adds extra touch to Airstream's beautiful 22-foot, 1967 Safari with bleached ash woodwork, lined and washable curtains, full-size reefer, twin beds. New International series has full carpeting, American cherry woodwork



Self-Containment...

Pioneered and perfected by Airstream...

refined even more for 1967!

GO AIRSTREAM — THERE'S NEVER BEEN A BETTER REASON... THERE'S NEVER BEEN A BETTER TIME!

No one knows more about self-containment than Airstream. But that's only natural... we invented it! When you go Airstream, all the luxurious comforts of home go with you... to the mountains, to a rushing trout stream, to a desolate beach... or any other place you decide to call your own. Wherever you wander, comfortable beds, complete bathroom, hot and cold water, heat, lights and refrigeration are all yours to enjoy. Again in 1967 Airstream offers many important luxury features you won't see on other travel trailers for many years to come, yet you can enjoy them all right now in an Airstream. The new penthouse bathroom is a good example. This new bathroom rivals the one at home and features a full size bathtub, shower and concealed toilet. The Uni-Volt system lets you turn on every light, every fan whether you are hooked up or not. When you are hooked up, the Uni-Volt automatically recharges the heavy duty 90 ampere battery to a safe level. New three-way lights let you choose any degree of illumination and control the amount of battery power you use when not hooked up. The marine water pump silently delivers 3 gallons of water per minute under constant pressure. This rugged pump conserves battery power as it operates only when wa-

ter is running. The auxiliary telephone shower with a shut-off valve and auxiliary toilet hand spray conserve precious water too. An effective water purifier is standard equipment on International models. The remarkable Everflo heater provides even temperatures throughout and pulls 60% less battery power. Other features that will add tremendously to your travel pleasure are a water level gauge; a pressure regulator that automatically eliminates the possibility of high water pressure; a battery condition meter that tells you the charge level of your battery at all times; automatic switch-over butane gas bottle regulator that tells you when one bottle is empty; a gas range, water heater and refrigerator that were tested around the world. These are only a few of the important luxury features in the 1967 Airstream. There are many more. See and try the 1967 Airstream and you won't travel any other way. Choose from 12 exciting models from the 17-foot Caravel to the 30-foot Sovereign. Use the "Live Now" Purchase Plan if you prefer. This bold new finance plan lets you make your travel dreams come true *today* at a preferred interest rate of only 4¾%. See your Airstream dealer for a free demonstration ride right away!

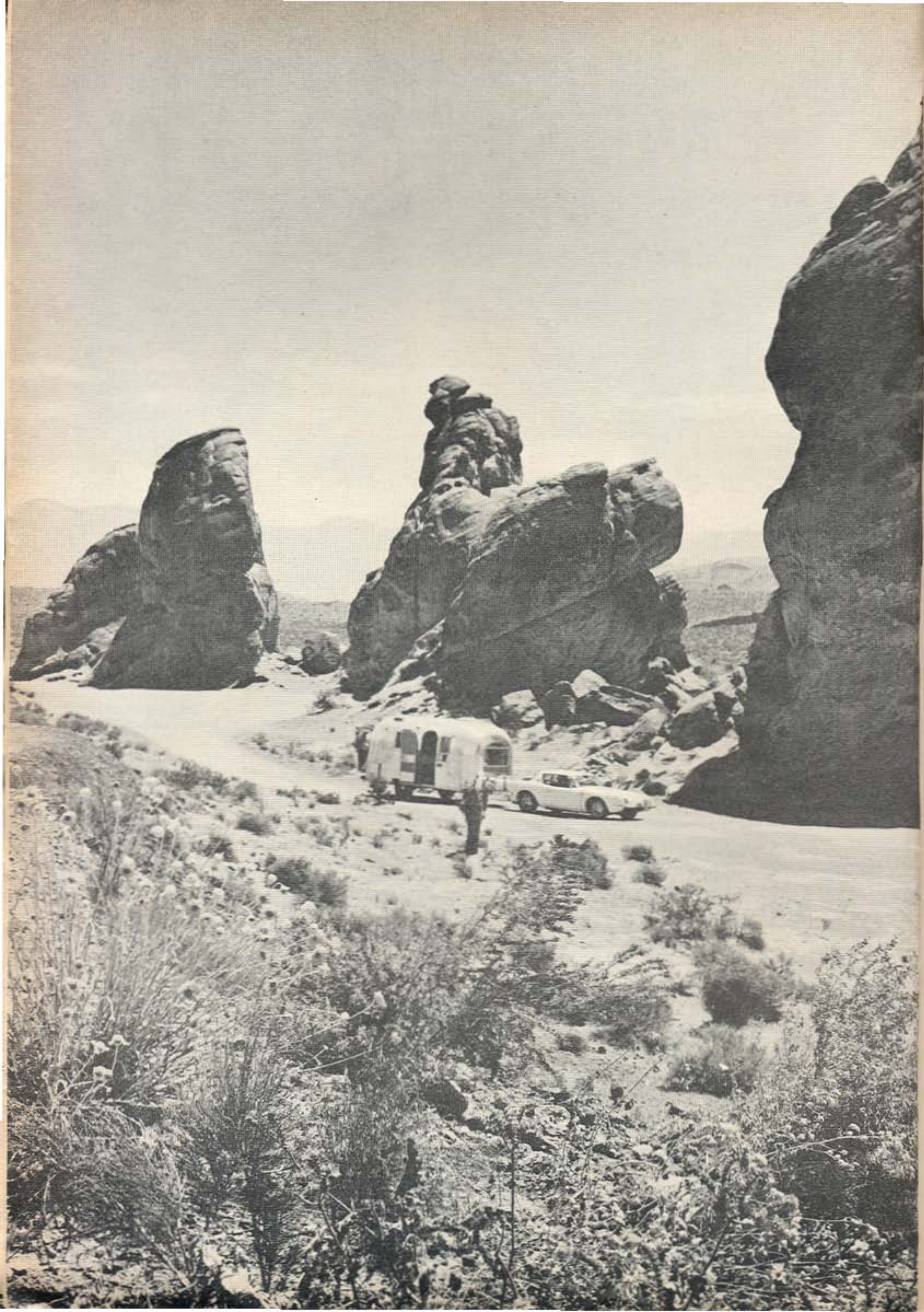
ENJOY THE EXTRA BENEFITS OF OWNING AN AIRSTREAM...

FUN, FRIENDSHIP AND ADVENTURE THROUGH WALLY BYAM CLUBS, CARAVANS AND RALLIES

Free! Big, new catalog in living color. Thrilling as a trip around the world. Write today!

AIRSTREAM INC.

Write nearest factory: 160 Church St., Jackson Center, Ohio / 12804 E. Firestone Blvd., Santa Fe Springs 3, California



Go Airstream... and enjoy these 6 extra benefits!

CERTIFIED SERVICE CENTERS • CARAVANNER INSURANCE • HIGHER RESALE VALUE

LIFETIME WARRANTY • "LIVE NOW" PURCHASE PLAN • WALLY BYAM CARAVANS, CLUBS AND RALLIES

When you go Airstream, you're eligible to take advantage of all six extra benefits that only Airstream offers. Look them over and see if you don't agree that these important extras help make your Airstream a practical investment for a lifetime of pleasure.

Certified Service Centers: A brand new idea in customer service! We at Airstream have long believed that after-sales-service is part of what you're buying when you buy a travel trailer. Each of our two factories can, of course, perform any service and every one of the 175 Airstream dealers can do nominal repair work. We're proud to say that Airstream is the first travel trailer manufacturer to recognize the need for nationwide service and establish Certified Service Centers throughout the country. To date, over fifty-five of these Certified Service Centers are spread out from coast to coast to form a national network of approved repair stations. The Certified Service Centers are not only totally qualified in all phases of Airstream maintenance, but they are also recognized as official service agents by the manufacturers of Airstream components. Here you will find capable, factory-trained personnel for all guarantee work, major repairs and service on your Airstream, all equipment and components.

Caravanner Insurance: As an Airstream owner, you are eligible to take advantage of special low-cost, broad coverage insurance offered by the Caravanner Travel Trailer Plan. This remarkable plan provides you with the protection of broad coverage for substantially less than other broad form policies currently available... in most cases nearly 30%. Caravanner Insurance is not cut-rate insurance or so-called "bargain" insurance. Airstream's safety features and built-to-last construction are the biggest reasons Caravanner Insurance can offer such complete protection at such great savings. And because Caravanner Insurance knows the product, you can be sure you're going to get fair settlements and fast, friendly service. Wherever you go... U.S.A.... Canada... Mexico... you'll enjoy complete protection and immediate service.

Higher Resale Value: Since 1932 Airstream has been recognized as the undisputed leader of the travel

trailer industry. As an Airstreamer, you are instantly recognized as a discriminating traveler and receive a warm welcome wherever you go. It is this kind of prestige that keeps the value of your Airstream *up* and depreciation *low*. In fact, no other travel trailer maintains such a high value after purchase. No wonder Airstream is the most wanted travel trailer in the world! When you buy an Airstream, you're making an investment that pays big dividends in pleasure as well as in dollars and cents.

Lifetime Warranty: Airstream was the first manufacturer to offer a lifetime warranty. The very first Airstream that Wally Byam built carried a lifetime warranty; as a matter of fact, no Airstream has ever been sold without one! The Airstream warranty is straight and to the point; it guarantees that your new Airstream is free from defects in material and Airstream workmanship. And the guarantee is in effect for as long as you live! Though you may be planning for the future, you can buy your Airstream *today* and enjoy it *right now*, assured that your investment is going to last a lifetime... we guarantee that it will!

"Live Now" Purchase Plan: Now you can make your travel dreams come true *today*! This exclusive new feature lets you purchase the Airstream of your choice for as little as 25% down with up to 5 years to pay at a low interest rate of only 4 3/4% per year, as administered by Commercial Credit Corp. And remember... your purchase is guaranteed for as long as you live!

Wally Byam Caravans, Clubs and Rallies: Only Airstream offers such a wide choice of professionally coordinated Caravans to the most fascinating places of the world. Only Airstream offers 85 permanent Club Units in the United States, five in Canada and one in Mexico.

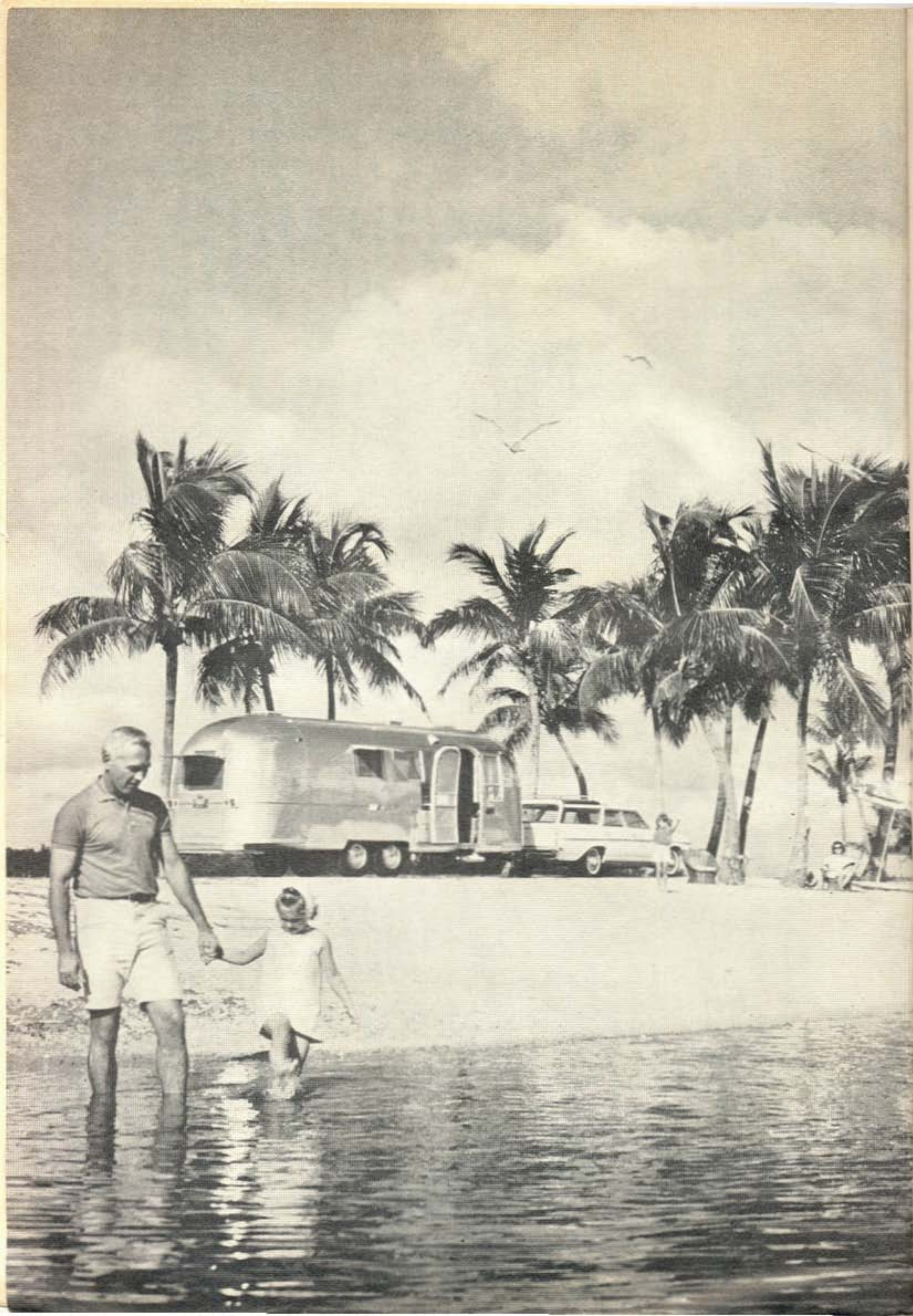
The 1966 Airstream is the finest Airstream in travel trailer history. The six extra benefits are offered exclusively by Airstream. Why should you settle for less? You're invited to inspect the exciting 1966 models now... and you'll say Airstream is the logical choice. See your Airstream dealer for a free demonstration ride right away!

*Free! Big, new catalog in living color.
Thrilling as a world cruise. Write today!*

AIRSTREAM INC

Write nearest factory: 130 Church Street, Jackson Center, Ohio • 12804 East Firestone Boulevard, Santa Fe Springs 9, California

U
4
P



Announcing a bold new finance plan...

AIRSTREAM'S EXCLUSIVE 'LIVE NOW' PURCHASE PLAN

As little as
25%
down

Preferred interest rate—
only **4 $\frac{3}{4}$ %** per year
administered by
Commercial Credit Corp.

Up to
5 years
to pay

If you have long dreamed of travel adventure... if you have promised yourself that you would someday take time out to "live a little"... you don't have to put it off until another day. Airstream's exclusive 'LIVE NOW' PURCHASE PLAN lets you make all your travel dreams come true right now! Here's how it works. Go to your Airstream dealer and choose the model that's just right for you. If you already own a trailer, chances are it will easily make the 25% down payment. Then pay as little as \$56 a month including vehicle insurance and credit life insurance. You can take up to 5 years to pay at a preferred interest rate of 4 $\frac{3}{4}$ % per year. And you're protected by credit life insurance at the lowest current rate. Doesn't the 'LIVE NOW' PURCHASE PLAN make a lot of sense for you? Now there is no need to deny yourself all the pleasure an Airstream can bring until "that" day comes along when you decide to retire. Airstream's 'LIVE NOW' PURCHASE PLAN lets you buy your Airstream *now*, while your earning power is

at its highest. Airstream's 'LIVE NOW' PURCHASE PLAN lets you realize your dreams of travel adventure *today*... not some distant "tomorrow" that may never come. And your investment is sound because your Airstream is guaranteed for as long as you live! The time has come to stop dreaming and start *doing*! Select the Airstream of your choice today; then use the 'LIVE NOW' PURCHASE PLAN and go... do... live!

Enjoy the extra benefits of owning an Airstream... fun, friendship and adventure through Wally Byam Caravan Club, Caravans and Rallies.

FREE! BIG NEW CATALOG IN FULL COLOR. THRILLING AS A TRIP AROUND THE WORLD. WRITE TODAY!

AIRSTREAM INC.

Write nearest factory:

130 Church St., Jackson Center, Ohio

12804 E. Firestone Blvd., Santa Fe Springs 9, California

**Now you can really make your travel dreams come true today...
see your Airstream dealer right away!**

The new 1966 Airstream Caravel

17 FEET OF ADVENTURE!

Total self-containment and luxurious accommodations for six that a compact car can tow!

The trailering public demanded it but only Airstream came up with the answer...the new Airstream Caravel for 1966! The new 17-foot Caravel is the first travel trailer big enough for a family of six yet light enough to be towed with a compact car. The new Caravel weighs in at only 2350 pounds with a hitch weight of only 250 pounds. But don't let the small size fool you. The Caravel is every inch an Airstream with the same quality features and the same go-anywhere construction found in larger Airstreams. Inspect the new Caravel from hitch ball to bumper. On the inside you'll notice the spaciousness of standard width and headroom, the airiness of five huge windows, two double beds with foam mattresses (two fold-up bunks are optional), an ample amount of storage space, you'll also notice a full-size Formica-topped galley with a 3-burner range and oven, a full-size bathroom with toilet, sink and shower, and a large table that accommodates six and disappears out of the way when not in use. The new vinyl-laminated walls and ceilings enrich the interior and clean with a touch of a damp cloth. Like all Airstreams, the Caravel offers the convenience of total self-containment... hot and cold water, heat, refrigeration and Uni-Volt lighting which means

power anytime, anywhere—automatically... all totally independent of outside sources. On the outside you'll notice Airstream's famous structural alloy aluminum, contoured safety glass windows, the exclusive Dura-Torque axle, shock absorbers and electric brakes on each wheel. In 1966 a full-size screen door and foldaway step are standard equipment. And the new Caravel costs less to own than you ever imagined. If you wish, take advantage of Airstream's 'LIVE NOW' PURCHASE PLAN!—a bold new finance program that lets you take up to 5 years to pay at a preferred interest rate of only 4¾% per year! Compare the new Caravel feature for feature and dollar for dollar with any other travel trailer and you'll choose the Caravel. The Caravel is a limited edition and is produced only once a year, so you must order now to avoid disappointment. See and try the new 1966 Caravel at your Airstream dealer today!

AIRSTREAM INC.

Write nearest factory:

130 Church St., Jackson Center, Ohio
12804 E. Firestone Blvd., Santa Fe Springs 9, California

Enjoy the extra benefits of owning an Airstream
... fun, friendship and adventure through
Wally Byam Caravan Club, Caravans and Rallies.

*Free! Big new catalog in full color. Thrilling
as a trip around the world. Write today!*





LEFT

Formica-topped galley offers 3-burner range and oven. Standard width and headroom and five big windows give the inside a feeling of spaciousness!

RIGHT

New Airstream Caravel combines small size with travel/living comfort for a family of six!



ABOVE

New 17-foot Airstream Caravel is built to go anywhere yet light enough for a compact to tow!

LEFT AND RIGHT

Full-size bathroom includes sink, shower and dependable marine toilet with waste holding tank!

OPPOSITE PAGE

Roomy dining table easily accommodates six persons, disappears out of the way when not in use!

Tows a load as big as a house carries everybody in the house



The Travelall® by International®

There's strength enough and power enough in the big family wagon to haul a travel trailer...or a boat trailer...or a camper trailer.

It can tow big loads at highway speeds without wagging its tail. Be-

cause we gave the TRAVELALL a huskier frame and sturdier suspension than most wagons. And with a powerful INTERNATIONAL engine plus all-wheel drive, you can even go where roads don't go.

Inside, the TRAVELALL is also built for going places—with nine travelers plus their baggage, or six campers plus the camp, or three fishermen plus

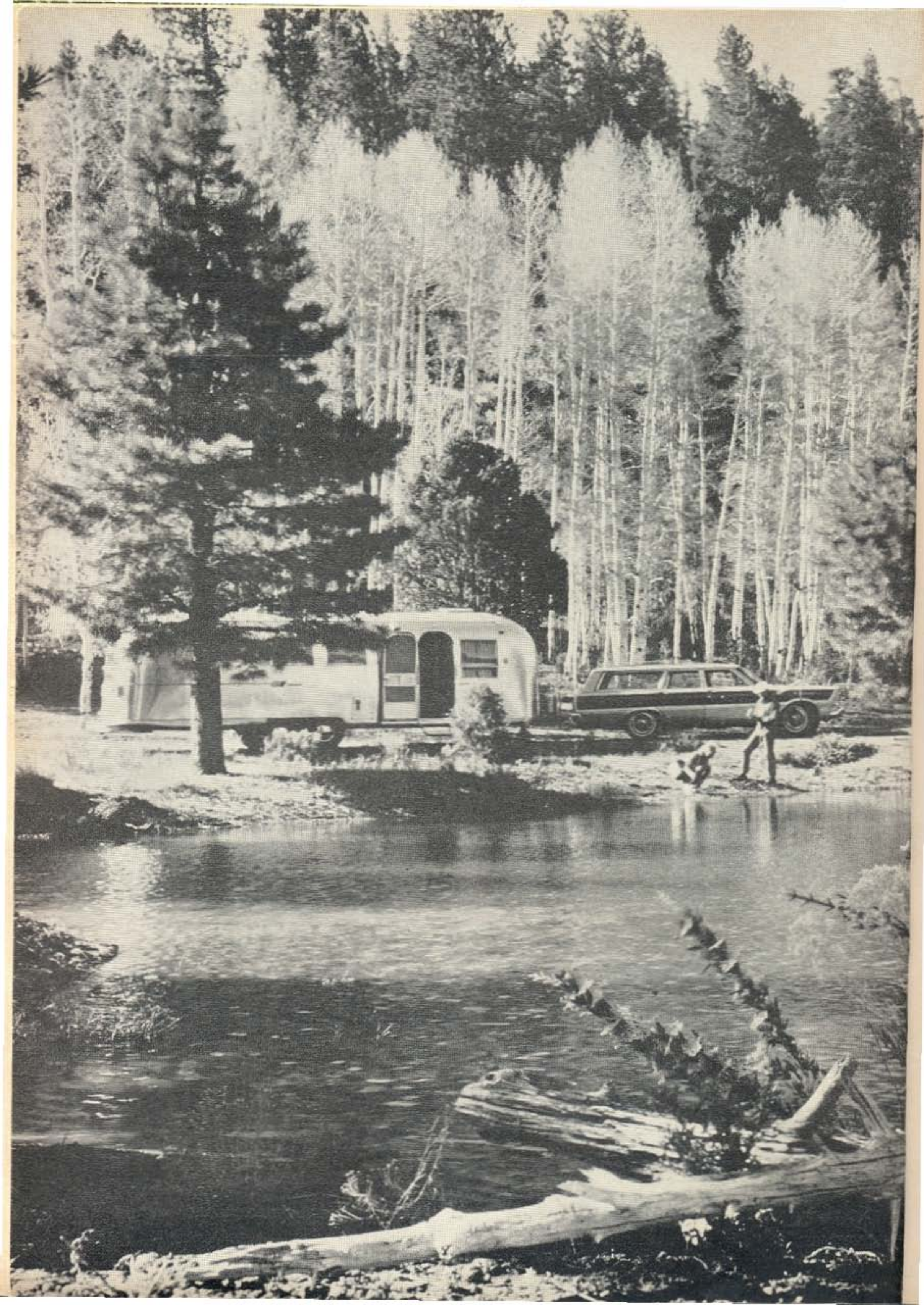
their boat. And it's easy to get into.

You'll never know how good or different this big family wagon *really* is—until you try it. So try it. Any INTERNATIONAL Dealer is ready to show you what it can do.



**INTERNATIONAL HARVESTER
COMPANY**

CHICAGO, ILLINOIS



***4³/₄ % FINANCING
STILL AVAILABLE!***

***AIRSTREAM'S
EXCLUSIVE
'LIVE NOW'
PURCHASE PLAN***

***Preferred interest rate — only 4³/₄% per year
administered by Commercial Credit Corp.***

As little as 25% down

Up to 5 years to pay

If you have long dreamed of travel adventure . . . if you have promised yourself that you would someday take time out to "live a little" . . . you don't have to put it off until another day. Airstream's exclusive 'Live Now' Purchase Plan lets you make all your travel dreams come true right now! Here's how it works. Go to your Airstream dealer and choose the model that's just right for you. If you already own a trailer, chances are it will easily make the 25% down payment. Then pay as little as \$56 a month including vehicle insurance and credit life insurance. You can take up to 5 years to pay at a preferred interest rate of 4³/₄% per year. And you're protected by credit life insurance at the lowest current rate. Doesn't the 'Live Now' Purchase Plan make a lot of sense for you? Now there is no need to deny yourself all the pleasure an Airstream can bring until "that" day comes along when you decide to retire. Airstream's 'Live Now' Purchase Plan lets you buy your Airstream now, while your earning power is at its highest.

Airstream's 'Live Now' Purchase Plan lets you realize your dreams of travel adventure **today** . . . not some distant "tomorrow" that may never come. And your investment is sound because your Airstream is guaranteed for as long as you live! The time has come to stop dreaming and start **doing**! Select the Airstream of your choice today; then use the 'Live Now' Purchase Plan and go . . . do . . . live!

Enjoy the extra benefits of owning an Airstream . . . fun, friendship and adventure through Wally Byam Caravans, Clubs and Rallies.

FREE! BIG NEW CATALOG IN FULL COLOR. THRILLING AS A TRIP AROUND THE WORLD. WRITE TODAY!

AIRSTREAM INC.

Write nearest factory: 130 Church St., Jackson Center, Ohio
12804 E. Firestone Blvd., Santa Fe Springs 9, California.

**Go Airstream — there's never been a better reason...
there's never been a better time. See your Airstream dealer right away!**



exclusive
AIRSTREAM
FUN FIESTA!

Discover Mexico!

**JOIN A WALLY BYAM CARAVAN...THE EXCITING WAY TO TRAVEL!
HEADING FOR ADVENTURE NOVEMBER 15TH AND DECEMBER 1ST**

Explore the mysterious ruins of the great Aztec civilization in Teotihuacan . . . bring home a fighting marlin for your mantle from Mazatlan . . . visit the fascinating shops along fashionable Paseo de la Reforma in cosmopolitan Mexico City. Capture the real Mexico on a Wally Byam Caravan — an extra benefit of owning an Airstream! You have your choice of two fabulous Caravans this winter. On November 15th the Wally Byam Caravan will leave Tucson, Arizona and head down Mexico's west coast. Destination . . . high adventure! Soak up sunshine in tropical Mazatlan where the jungle meets the sea. Swim, fish, dive or just relax on the beach and let a native boy bring you fresh coconuts. You'll stop in picturesque Guadalajara, famous for colorful glassware and Lake Patzcuaro where butterfly boats dot the blue water with color. The sentimental songs of the mariachis will follow you all the way to Mexico City. Another fun-packed Wally Byam Caravan will rendezvous at McAllen, Texas and work its way down Mexico's east coast to Mexico City. Along the way, you'll discover some of Mexico's most fasci-

nating places. In Queretaro a treasure of opals, topaz, amethyst and other gems are waiting for you at bargain prices. Your camera will never stop clicking in Oaxaca as strange Indians fill the marketplace dressed in their exotic regional costumes. You'll explore Vera Cruz, where past and present work their magic to lure you from wide boulevards to the narrow cobblestone streets laced with iron balconies. The Wally Byam Caravanners are a wonderful source of new friends and good fellowship. Your self-contained Airstream will provide all the luxurious comforts of home. There is no better time to see Mexico . . . there is no better way to feel the pulsebeat of this charming land. Take advantage of Airstream's exclusive 'Live Now' Purchase Plan, a bold new finance plan that lets you make your travel dreams come true today, not mañana. Take up to 5 years to pay at a preferred interest rate of only 4³/₄% per year as administered by Commercial Credit Corp. Whichever Caravan you choose, it will be packed with romance and high adventure. See your Airstream dealer pronto . . . we'll be expecting you.

*Free! Big, new catalog in living color.
Thrilling as a trip around the world. Write today!*

AIRSTREAM INC.

Airstream 1967

more luxury... more comfort than any other single year!

The new 1967 Airstream is here...and it comes loaded with custom features you won't see on other travel trailers for years to come! Step into the International...you are surrounded by luxury. Genuine American cherrywood paneling, rich decorator fabrics and deep pile carpeting create a resplendent setting that rivals the most exclusive hotel suite. In 1967 Airstream introduces the most lavish bathroom on wheels...the all-new 'penthouse' bathroom, featuring a dramatic free-form bathtub, shower, concealed toilet and swing-out boudoir mirror. A sliding wood door provides complete privacy and slides completely out of the way when not in use. Airstream's exclusive variable storage feature lets you tailor your storage space to fit your personal requirements. Drawers can be removed to create shelf

space...shelves can be removed to make large open storage areas. New in 1967 are optional Vista-View skylights to fill your living area with cheery sunshine by day, or twinkling stars by night. Airline-type sliding shades close the Vista-View windows when desired. Beautifully textured vinyl-laminated walls and ceilings add drama to the interior decor yet a damp cloth brightens them like new. Inspect the new galley for 1967; you'll say it is pure magnificence! It features vastly increased storage area, popular in-line burner range and stainless steel sinks are standard equipment on all standard production models. The new engineering features in 1967 are impressive too. The improved Super Dura-Torque axle provides 50% more shock absorption capacity resulting in a cloud-nine ride. This means smoother towing, less vibration than ever before! The Aerostress chassis is still the lightest in weight and toughest in tensile strength in the industry. The new Uni-Volt system does away with fuses. Choose from 12 exciting models including the 17-foot Caravel...a completely re-designed 20-foot Globetrotter...and other exciting models up to the 30-foot Sovereign of the Road. And remember...Airstream and *only* Airstream offers you all these important years-ahead features. Take advantage of Airstream's new 'LIVE NOW' PURCHASE PLAN and make your travel dreams come true today. See your Airstream dealer now!

GO AIRSTREAM—THERE'S NEVER BEEN A BETTER REASON...THERE'S NEVER BEEN A BETTER TIME!



Enjoy the extra benefits of owning an Airstream...fun, friendship and adventure through Wally Byam Clubs, Caravans and Rallies.

Attend the **AIRSTREAM PREVUE 1967** premiere showing of the new Airstream fleet at all Airstream dealers! **SEPTEMBER 22, 23, 24, 1966**

Write nearest factory: 150 Church St., Jackson Center, Ohio • 12804 E. Firestone Boulevard, Santa Fe Springs 2, California

AIRSTREAM INC.

Airstream 1967

more luxury... more comfort than any other single year!

The new 1967 Airstream is here...and it comes loaded with custom features you won't see on other travel trailers for years to come! Step into the International...you are surrounded by luxury. Genuine American cherrywood paneling, rich decorator fabrics and deep pile carpeting create a resplendent setting that rivals the most exclusive hotel suite. In 1967 Airstream introduces the most lavish bathroom on wheels...the all-new 'penthouse' bathroom, featuring a dramatic free-form bathtub, shower, concealed toilet and swing-out boudoir mirror. A sliding wood door provides complete privacy and slides completely out of the way when not in use. Airstream's exclusive variable storage feature lets you tailor your storage space to fit your personal requirements. Drawers can be removed to create shelf

space...shelves can be removed to make large open storage areas. New in 1967 are optional Vista-View skylights to fill your living area with cheery sunshine by day, or twinkling stars by night. Airline-type sliding shades close the Vista-View windows when desired. Beautifully textured vinyl-laminated walls and ceilings add drama to the interior decor yet a damp cloth brightens them like new. Inspect the new galley for 1967; you'll say it is pure magnificence! It features vastly increased storage area, popular in-line burner range and stainless steel sinks are standard equipment on all standard production models. The new engineering features in 1967 are impressive too. The improved Super Dura-Torque axle provides 50% more shock absorption capacity resulting in a cloud-nine ride. This means smoother towing, less vibration than ever before! The Aerostress chassis is still the lightest in weight and toughest in tensile strength in the industry. The new Uni-Volt system does away with fuses. Choose from 12 exciting models including the 17-foot Caravel...a completely re-designed 20-foot Globetrotter...and other exciting models up to the 30-foot Sovereign of the Road. And remember...Airstream and only Airstream offers you all these important years-ahead features. Take advantage of Airstream's new 'LIVE NOW' PURCHASE PLAN and make your travel dreams come true today. See your Airstream dealer now!

GO AIRSTREAM—THERE'S NEVER BEEN A BETTER REASON...THERE'S NEVER BEEN A BETTER TIME!



Enjoy the extra benefits of owning an Airstream... fun, friendship and adventure through Wally Byam Clubs, Caravans and Rallies.

Attend the **AIRSTREAM PREVUE 1967** premiere showing of the new Airstream fleet at all Airstream dealers! SEPTEMBER 22, 23, 24, 1966

Write nearest factory: 140 Church St., Jackson Center, Ohio • 12804 E. Firestone Boulevard, Santa Fe Springs 1, California

AIRSTREAM INC.

Airstream 1967

**more luxury...
more comfort
than any other
single year!**

The new 1967 Airstream is here...and it comes loaded with custom features you won't see on other travel trailers for years to come! Step into the International...you are surrounded by luxury. Genuine American cherrywood paneling, rich decorator fabrics and deep pile carpeting create a resplendent setting that rivals the most exclusive hotel suite. In 1967 Airstream introduces the most lavish bathroom on wheels...the all-new 'penthouse' bathroom, featuring a dramatic free-form bathtub, shower, concealed toilet and swing-out boudoir mirror. A sliding wood door provides complete privacy and slides completely out of the way when not in use. Airstream's exclusive variable storage feature lets you tailor your storage space to fit your personal requirements. Drawers can be removed to create shelf

space...shelves can be removed to make large open storage areas. New in 1967 are optional Vista-View skylights to fill your living area with cheery sunshine by day, or twinkling stars by night. Airline-type sliding shades close the Vista-View windows when desired. Beautifully textured vinyl-laminated walls and ceilings add drama to the interior decor yet a damp cloth brightens them like new. Inspect the new galley for 1967; you'll say it is pure magnificence! It features vastly increased storage area, popular inline burner range and stainless steel sinks are standard equipment on all standard production models. The new engineering features in 1967 are impressive too. The improved Super Dura-Torque axle provides 50% more shock absorption capacity resulting in a cloud-nine ride. This means smoother towing, less vibration than ever before! The Aerostress chassis is still the lightest in weight and toughest in tensile strength in the industry. The new Uni-Volt system does away with fuses. Choose from 12 exciting models including the 17-foot Caravel...a completely re-designed 20-foot Globetrotter...and other exciting models up to the 30-foot Sovereign of the Road. And remember...Airstream and *only* Airstream offers you all these important years-ahead features. Take advantage of Airstream's new 'LIVE NOW' PURCHASE PLAN and make your travel dreams come true *today*. See your Airstream dealer now!

GO AIRSTREAM—THERE'S NEVER BEEN A BETTER REASON...THERE'S NEVER BEEN A BETTER TIME!



Enjoy the extra benefits of owning an Airstream...fun, friendship and adventure through Wally Byam Clubs, Caravans and Rallies.

Attend the **AIRSTREAM PREVUE 1967** premiere showing
of the new Airstream fleet at all Airstream dealers! SEPTEMBER 22, 23, 24, 1966

Write nearest factory: 140 Church St., Jackson Center, Ohio • 12804 E. Firestone Boulevard, Santa Fe Springs 1, California

AIRSTREAM INC

Fun is all around you go Airstream!

TAKE A FREE DEMONSTRATION RIDE AND
DISCOVER REAL TRAVEL ADVENTURE!



Fun is a swirling trout stream when *you've* got a three pounder in the net. It's *you* in some faraway land you've only read about. Fun is exploring new places, seeing new faces...and it's lazy days under the sun. When you own an Airstream travel trailer, all your dreams of travel adventure suddenly become practical reality! This is because everything that traveling requires goes right along with you. Enjoy comfortable beds, complete bathroom with toilet, tub and shower, hot and cold water, heat, bright lights and refrigeration...all completely independent of outside connections! You can eat, sleep, bathe, shower, stretch out and relax wherever you are and whenever you want! So dream a dream of faraway places...of new friends and interests...and when just dreaming no longer satisfies that burning desire to travel, go Airstream and watch all your travel dreams come true! Have you ever wondered what it's like to tow a lightweight Airstream? Your nearby Airstream dealer invites you to come in and try one on the road yourself. Come in soon...then hitch up and head for the fun!



FREE!

Send for new picture
book color catalog, thrill-
ing as a world cruise!

"For extra fun join a Wally Byam Caravan"

AIRSTREAM INC.

180 CHURCH STREET, JACKSON CENTER, OHIO
12804 E. FIRESTONE, SANTA FE SPRINGS 7, CALIF.