

AIRSTREAM MOTORHOME

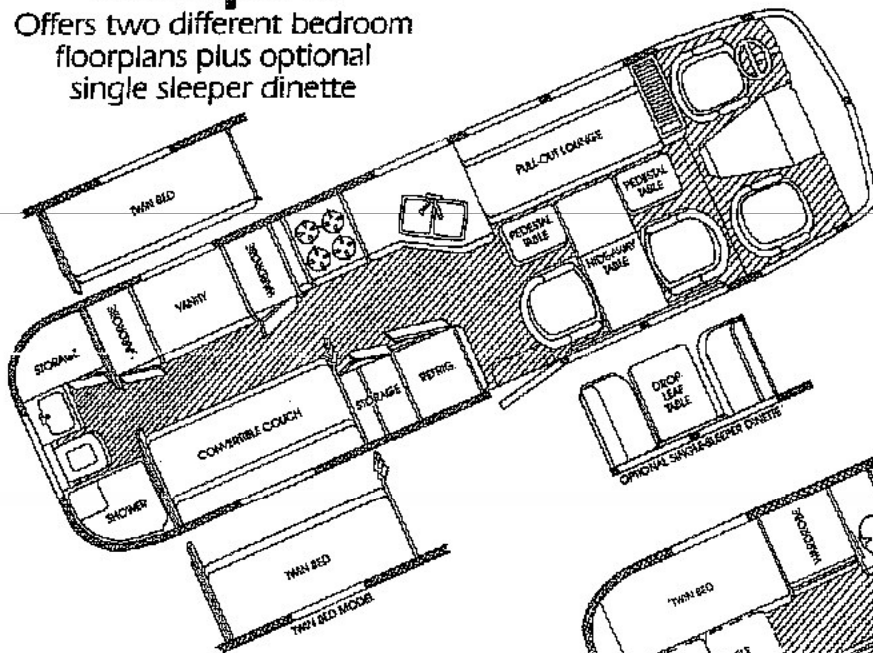
Unsurpassed Engineering... Outstanding Investment

The ultimate in comfort, luxury, and styling as well as value.

82

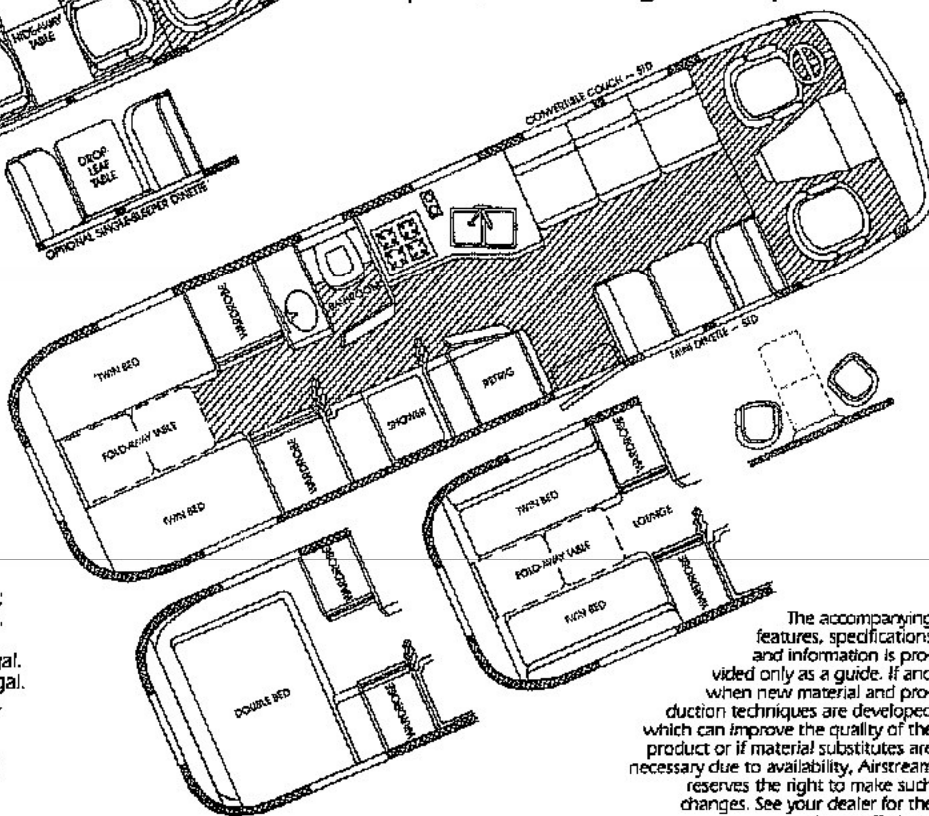
28' Motorhome Floorplan

Offers two different bedroom floorplans plus optional single sleeper dinette



NEW 31' Center Bath Motorhome Floorplan

Offers three different bedroom floorplans, all featuring center split bath



SPECIFICATIONS

CHASSIS

310 Series — Chevrolet,
217" Wheel Base,
14500# GVWR,
12000# AEW *
280 Series — Chevrolet,
178" Wheel Base,
14500# GVWR,
10900# AEW *

ENGINE TYPE

Chevrolet Gasoline
Automotive Engine,
454 CID
Optional Isuzu Auto-
motive Diesel —
Turbocharged —
Water cooled, QD 145

AXLE RATIO

4.56:1

* Approximate Equipped Weight including fuel (w/o water),
— Add 350# for Diesel

CAPACITIES

Water —
310 Series 60 gal.;
280 Series 50 gal.
Hot Water — 6 gal.
Grey Water — 30 gal.
Black Water — 25 gal.
Fuel Tank — 60 gal.
(Calif. 40 gal.)
LPG Tank — 82 Lb.
(125 Lb. optional)

DIMENSIONS

310 Series —
Length 31'5"
Width 7'11 1/2"
Height Ext 9'2" Int 6'6"
280 Series —
Length 28'2"
Width 7'11 1/2"
Height Ext 9'2" Int 6'6"

MOTORHOME FEATURES

(The following may be standard, optional or unavailable,
depending upon series/floorplan selected.)

- | | | |
|--|--|---|
| Air-Ride Suspension | Driving Lamps | Microwave Oven with |
| Radial Tires | Hardwood Drawers/
Doors with Carie
Inserts | Four Burner Range |
| Recessed Radial Spare | Woven Wood Blinds | Second Roof Air |
| Vacuomatic Step | Sink Covers/
Cutting Boards | 13,500 BTU with
Heat Strip |
| Solar Grey Slider
Windows | Double Stainless
Steel Sinks | Vacuum Cleaner |
| 50 Amp Converter | Brass Lavatory/
Shower Fixtures | 30,000 BTU Electronic
Ignition Furnace |
| Exterior Lighted Lockable
Storage Compartments | Floor Courtesy Lights | 10 cu. ft. 3-way
Refrigerator |
| Hitch Package with
Wiring (Class I) | 13,500 BTU Rotary
Air Conditioner | Water Heater with
Electronic Ignition |
| Auxiliary Starter | Tank Monitor Panel | Motorized TV Antenna |
| Booster Circuit | Hickory Hardwood
Valances | C.B. Radio |
| Cruise Control | Toilet with Water Saver/
Padded Seat | Remote Spotlight |
| High Back Drive/
Co-Pilot Swivel and
Reclining Seats | Food Center | Two Cocktail Chairs
with Lift Up Table |
| Awning Rail | 6.5 KW Generator | Water Purifier with
Separate Faucet |
| AM/FM Stereo with
Four Speakers | Ice Maker | Innerspring Mattress |
| 8-Track Tape Player | Trash Compactor | Panoramic Rear Solar
Grey Window |
| Leather Package | | Dual Intensity Lighting |
| Diesel Engine with
Turbo Package | | Chrome Air Horns |

The accompanying features, specifications and information is provided only as a guide. If and when new material and production techniques are developed which can improve the quality of the product or if material substitutes are necessary due to availability, Airstream reserves the right to make such changes. See your dealer for the latest offerings.

AIRSTREAM

Airstream, Inc. • Jackson Center, Ohio 45334 • (513) 596-6111