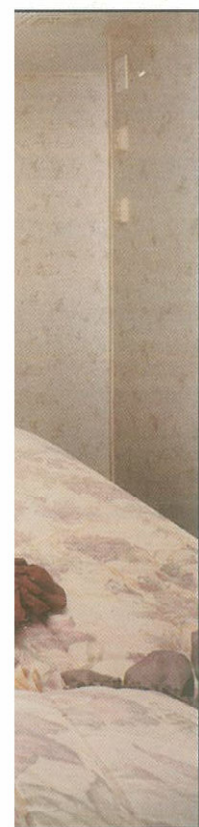
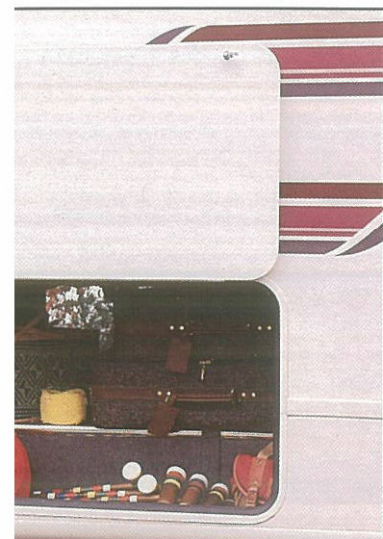
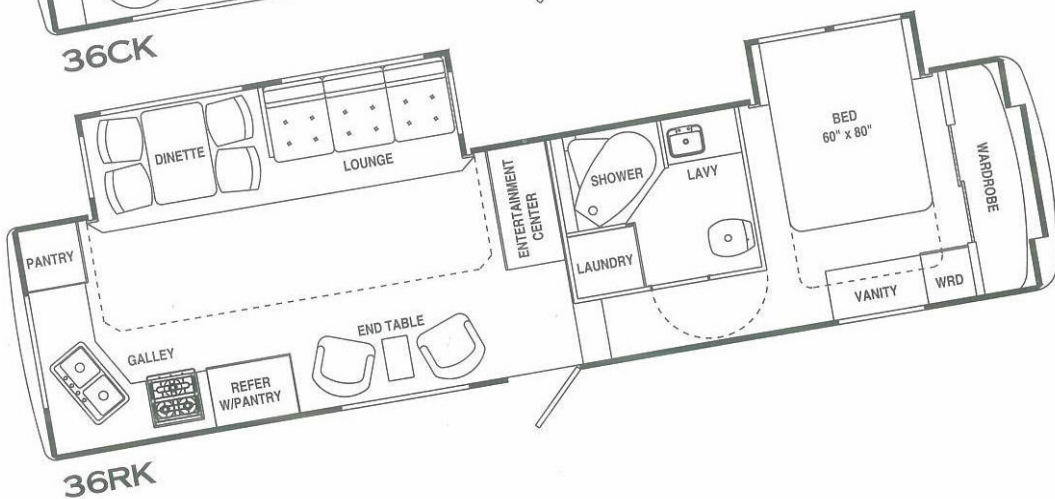
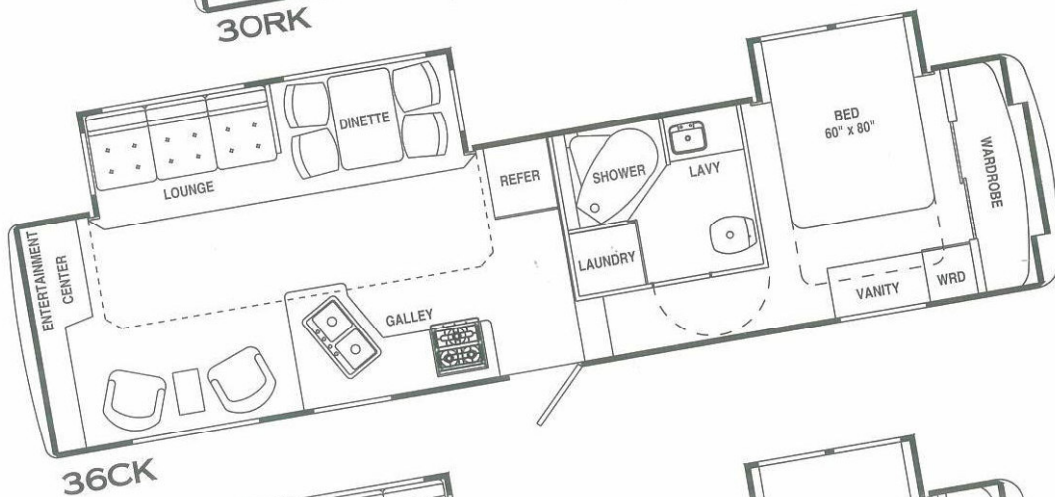
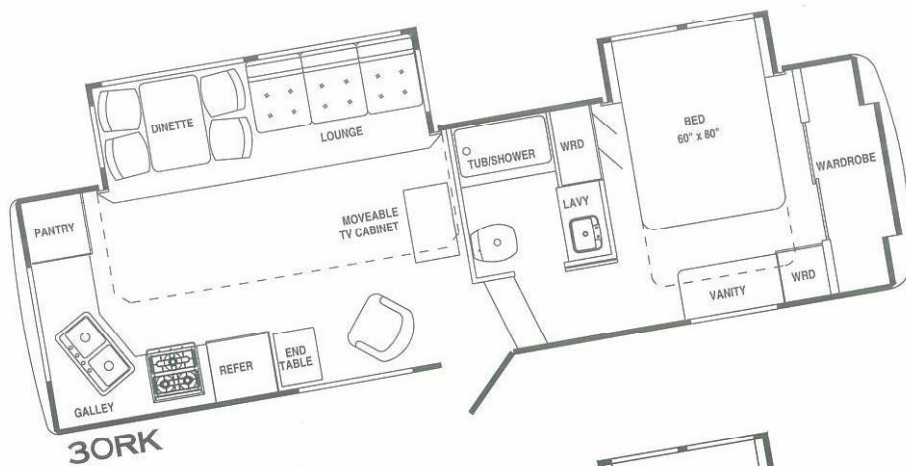


eted exterior storage compart-  
 carry everything you'll need and  
 as well. In addition, the pass-  
 partment offers easier access and  
 those especially large items.



lots of drawer  
 en-size bed with



	36' RK	36' CK	30' RK
Length—Exterior	36'4"	36'4"	30'11"
Width—Exterior	101"	101"	101"
Width—Interior	95"	95"	95"
Height—Exterior w/ AC	12'5"	12'5"	12'5"
Height—Interior (Bedroom)	72"	72"	72"
Hitch Weight	2200	2200	TBD
GVWR—Gross Vehicle Weight Rating	14,000	14,000	TBD
UVW—Unloaded Vehicle Weight	11,400	11,400	TBD
NCC—Net Carrying Capacity	2600	2600	TBD
Tire Size	16"	16"	TBD
Fresh Water	79 gal.	79 gal.	TBD
Grey Water	42 gal.	42 gal.	TBD
Black Water	42 gal.	42 gal.	TBD
Aux. Gray Water Holding Tank	42 gal.	40 gal.	TBD
Exterior Storage Volume (cubic feet)	118	118	TBD

**Vehicle Loading**—Every effort has been made to provide the greatest number of options for the fifth wheel owner. Along with these choices comes the responsibility to manage the loads that are imposed by the choices so that they remain within the manufacturer's specified chassis weight limits. Do not overload the fifth wheel.

**Dry weights** based on standard features; optional equipment not included. Carrying capacity determined by subtracting dry gross weight from GVWR and includes fluids, options and cargo. Liquid capacities and weights are approximations only.

**NOTE:** Vehicles with overall body width greater than 96" are known as "wide bodies." Wide body vehicles are restricted to use on main highways in certain states. A vast majority of states allow 102" body width on all highways, but wide body width is now allowed on all federal highways in the United States. Your dealer may be able to furnish more specific information. If you are concerned about vehicle width, we invite you to consider other fine Thor vehicles offered in the standard 96" width.

*fifth wheels*