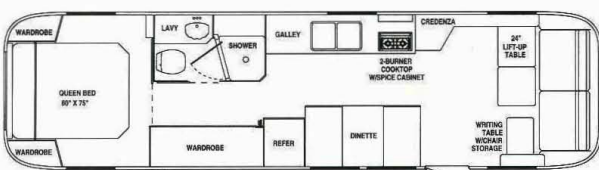




An American Legend  
celebrates another  
American Legend...



limited



### 1997 Specifications

|                                      |                           |
|--------------------------------------|---------------------------|
| Length-Exterior.....34' 10"          | GVWR.....9800#            |
| Width-Exterior.....8' 5 1/2"         | UVW*.....7950#            |
| Width-Interior.....8' 1"             | NCC.....1850#             |
| Height-Exterior w/ AC.....9' 7 1/2"  | Tire Size.....ST225/75R15 |
| Height-Interior w/AC.....6' 3 1/2"   | Fresh Water.....54 gal.   |
| Hitch Ball Height.....1' 6 3/4"      | Grey Water.....37 gal.    |
| Hitch Weight (typical unit).....870# | Black Water.....39 gal.   |

Since Airstream constantly strives to improve its product, all specifications are subject to change without notice. Not all standard features and options are available on all models. See your dealer for availability of specific options. Some features or options may be different or unavailable in Canada.

**Vehicle Loading**—Every effort has been made to provide the greatest number of options for the trailer owner. Along with these choices comes the responsibility to manage the loads that are imposed by the choices so that they remain within the manufacturer's specified chassis weight limits. **DO NOT OVERLOAD THE TRAILER.**

**Unloaded Vehicle Weights (UVW)** based on standard features, optional equipment not included. NCC determined by subtracting UVW from GVWR and includes fluids, options and cargo.

This information is intended as a guide only. Weights of individual vehicles may vary. Consult your Owner's manual for complete loading, weighing & towing instructions.

...with a unique  
"American Legend"  
limited edition trailer.



**AN AMERICAN LEGEND**

