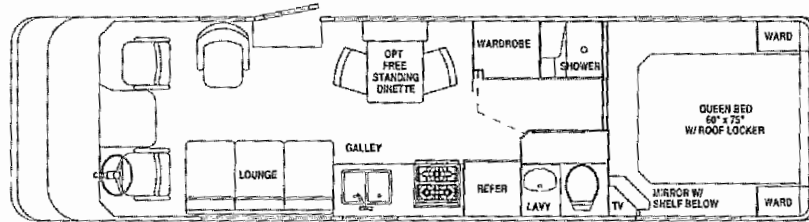
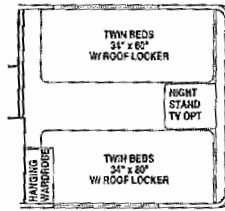
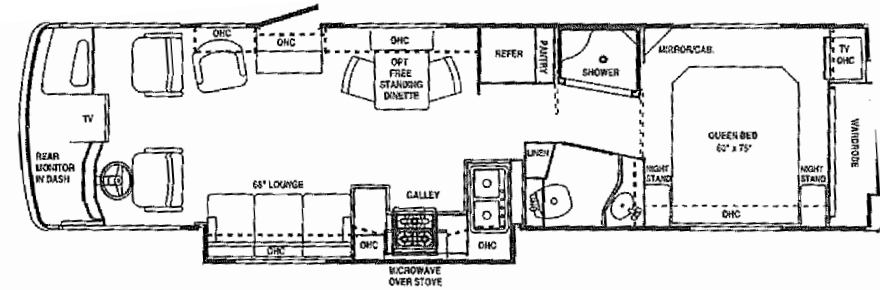
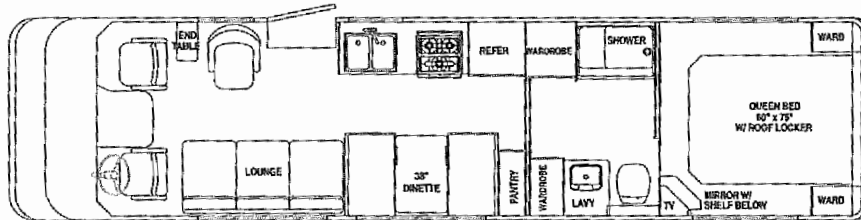
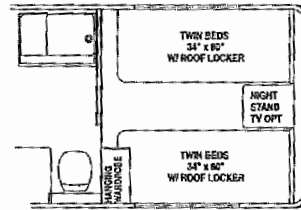


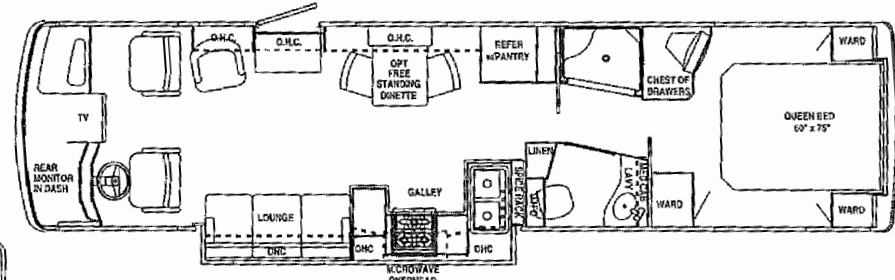
30' Gas-powered Land Yacht  
(available with optional twin beds)



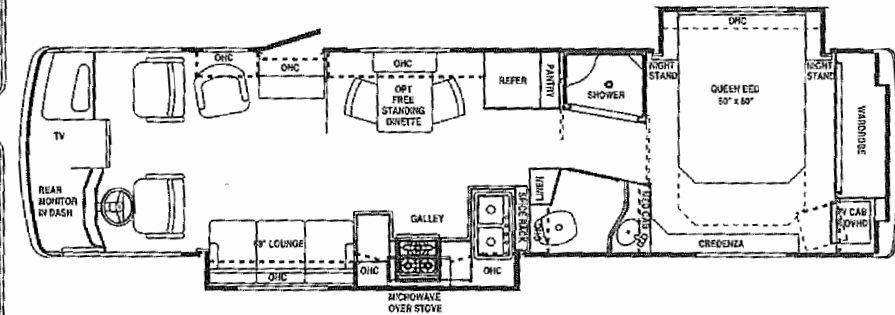
33' Gas-powered Land Yacht  
(available with optional twin beds)



350 XL B 1-Slide Gas-powered Land Yacht



350 XL J 1-Slide Gas-powered Land Yacht



355 XL 2-Slide Gas-powered Land Yacht

*With Airstream's nearly seventy years of experience building vehicles that have become American institutions, you can feel confident your Airstream Land Yacht or Land Yacht XL is designed for truly outstanding livability. Land Yacht floorplans represent the ultimate in space planning for comfort and convenience, with truly impressive storage capacity and many standard features that are expensive options on other motorhomes.*