

*Nana Yacht NC*

**CHASSIS**

- 130 Amp Alternator w/Heavy Duty Isolator
- Batteries (1 Main-2 Aux.)
- Emergency Start Solenoid
- Ford 275 HP-V-10 Fuel Injected; 5.38:1 Rear Axle Ratio
- Leveling jacks (Touch Pad Control)
- Motoraid Water Heater
- Pantograph Wipers w/Wet Arm & Controlled Cycle w/Extra Long Sweep
- Radial Tires (245/70R19.5F) w/Bright Wheel Simulators & Spare w/Winch
- Rear Automotive Heater

**EXTERIOR**

- 17' Patio Awning (N/A CSA)
- Basement Storage w/Insulated Aluminum Doors
- Bedroom Slide-Out Extension: Interior Size 22"D x 60.06"H x 74.75" W, Includes 60" x 80" Bed, Electric Operation, Slide-Out Cover (N/A CSA/DOT) (355)
- Dual Pane Slider Windows
- Galley Slide-Out Room Extension: Interior Size 17"D x 145"L x 64.5" H, Includes Galley & Lounge, Electric Operation, Slide-Out Cover (N/A CSA/DOT)
- Halogen® Headlights, Docking Lights (4) & Driving Lamps
- Heated Exterior Mirrors w/Remote
- Laminated Roof, Sidelwalls & Floor
- Painted Exterior Lower Skirts/Bumpers
- R.S. & C.S. Awning Rail w/Drip Edge

- Rear Ladder
- Smooth Fiberglass Roof

**DRIVER COMPARTMENT**

- Automotive Air Conditioner w/Side Window Defroster & Bi-Level Function w/Electronic Rotary Control
- Front Overhead Cabinet w/VCR/Satellite Receiver/VCC Prep
- Leather/Vinyl Wide-Body Driver/Co-Pilot Seats w/Swivel & Reclining Mechanism w/3-Point Integrated Seatbelts w/Retractors
- Powered Driver Seat

**GALLEY DECOR**

- Corian® Galley Top w/Backsplash
- Fixed Dinette-Fabric w/Flexilator Style Base & Seat Belts
- Hard Surface Galley Floor
- Pantry Storage (NA w/Side-by-Side Refrigerator Option)
- Porcelain Sink w/Corian® Covers (2)
- Spice Rack

**INTERIOR DECOR**

- Beveled Wall Mirrors—Dinette Wall
- Laminated Countertops w/Oak Edge
- Lounge w/Removable Arm Rests
- Oak Finish Cabinets w/Raised Panel Doors & Drawer Faces
- Pleated Shades Throughout (Night Only in Bedroom)
- Struts on Slide-Out Overhead Doors
- Swivel Chair—Fabric
- Vinyl Soft Ceiling

**BATHROOM DECOR**

- Chrome/Brass Fixtures & Hardware
- Corian® Lavatory Tops

- One-piece Fiberglass Shower w/Cap, Seat & Assist Handle
- Opaque Skylight in Shower
- Power Vent in Bath w/Power-Lift
- Power Vent in Shower Area
- Single Pivot Gold-tone Shower Door
- Sliding Pocket Doors Forward/Aft of Bath Area
- Toilet w/Water Saver

**BEDROOM DECOR**

- 60" x 80" Bed, Rear Wardrobe w/Sliding Mirrored Doors, Wardrobe Light w/Remote Switch, TV w/Swivel Slide-Out Shelf & Drawer Storage, Nightstands, Headboard & 2 Wall Lamps
- Innerspring Mattress w/Bedsprad & Pillows

**APPLIANCES**

- 13,500 & 11,000 BTU A/C's w/Ceiling Duct, Quick Cool Return Air Grill, Wall Thermostat & Heat Strips
- 2-way Automatic Refrigerator, 2-door, 8 Cu. Ft.
- 20" TV in Bedroom
- 20" TV In Dash w/Interlock & VCR Prewire
- 3-burner Cook-Top w/Storage Drawers
- 34,000 BTU Furnace w/Floor Duct System
- 6-gallon Gas/Electric Water Heater w/Motoraid
- Convection Microwave
- Satellite Dish Prep Kit
- TV Antenna w/Booster; Cable Hook-Up; Telephone Hook-Up (2) Bedroom & CS Cab
- Video Control Center (VCC)

**SYSTEMS/ELECTRICAL**

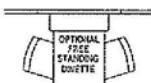
- 12-volt Fluorescent Lighting Recessed in Ceiling
- 30-amp Service
- 5-watt Solar Panel w/Indicator Light
- 5.5 KW Generator
- 55-amp Power Center (Converter)
- CB Radio Prep (Antenna & Co-Ax to RS Cab)
- Exterior Lighting Package Includes: Patio, Utility, Step & Baggage Compartment Lights
- Fantastic Roof Vent w/Built-In Thermostat & Rain Sensor in Lounge/Galley Area
- Fire Extinguisher
- Gravity Fresh Water Fill
- Heated Holding Tanks
- Range Exhaust w/Vent
- Rearview TV Monitor: Audio/Video w/Two Position Camera & Fiberglass Cover
- Sony® 140-watt AM/FM Radio w/Single CD Player, CD/MD/Control, Custom File Memory, Tuner w/20 FM and 10 AM Presets, & Full Detachable Face Plate (6 Speakers)
- Speaker/Headphone System for Bedroom TV
- Systems Monitor Panel
- TV Audio Thru Radio Speakers (Front 4)
- Utility Compartment w/Hot & Cold Spray Head, Soap & Paper Towel Dispensers
- Water Purifier w/Separate Faucet (N/A CSA)

**SPECIFICATIONS**

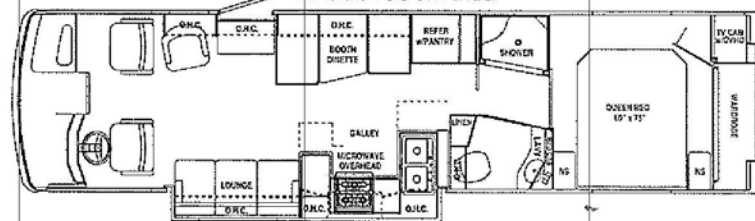
	350	355
Chassis	Ford 275-HP	Ford 275-HP
Actual Length	34'9"	34'9"
Width	101"	101"
Exterior Height with A/C	11'8"	11'8"
Interior Height	78.5"	78.5"
GAWR, Front Gross Axle Weight Rating (lbs.)	7,000	7,000
GAWR, Rear Gross Axle Weight Rating (lbs.)	13,500	13,500
GVWR Gross Vehicle Weight Rating (lbs.)	20,500	20,500
GCWR Gross Combined Weight Rating (lbs.)	25,000	25,000

	350	355
UWW Unloaded Vehicle Weight (lbs.)	TBD	18,300
NCC Net Carrying Capacity (lbs.)	TBD	2,200
Wheel Base	228"	228"
Fuel (gal.)	75	75
LPG (lbs.)	105	105
Fresh Water (gal.)	79	79
Gray Water (gal.)	57	57
Black Water (gal.)	52	52
Hot Water Heater (gal.)	6	6
External Storage (up to cu. ft.)	160	160

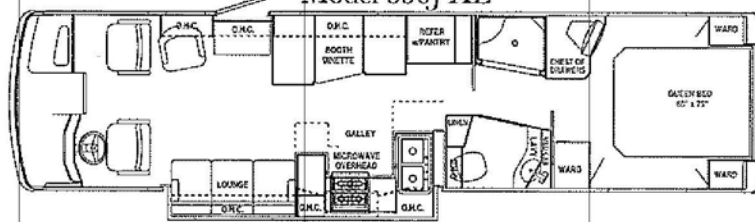
Free-standing Dinette Option



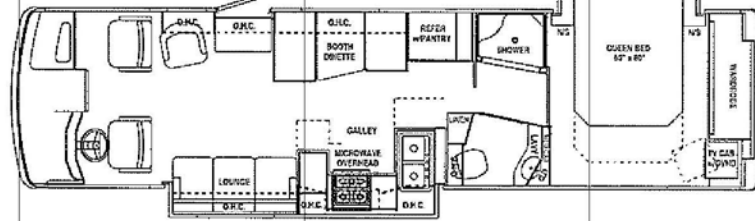
Model 350B XL



Model 350J XL



Model 355 XL



*Product information, specifications and photography in this brochure were as accurate as possible at time of printing. Since we continuously strive to improve our products, actual products may differ. Prices and specifications are subject to change without notice. All capacities are approximate and dimensions are nominal. Some features or options may be different or unavailable in Canada.*

**Dry weights** based on standard features; optional equipment not included. Net carrying capacity (NCC) determined by subtracting unloaded vehicle weight (UWW) from gross vehicle weight (GVWR) and includes fluids, options and cargo. Liquid capacities and weights are approximations only.

**Vehicle Loading**—Every effort has been made to provide the greatest number of options for the recreation vehicle owner. Along with these choices comes the responsibility to manage the loads that are imposed by the choices so that they remain within the manufacturer's specified chassis weight limits. Do not overload the recreation vehicle.

**Warning:** This information is intended as a guide only. Weights of individual vehicles may vary. Consult your owner's manual for complete loading, weighing and towing instructions.

This brochure is printed on recycled paper as part of Thor's corporate effort to minimize waste and conserve our natural resources. Providing safe, fuel efficient recreational vehicles is Thor's way of further demonstrating our role as the industry leader in safeguarding our nation's environment.



**AIRSTREAM**

419 West Pike Street • PO Box 629 • Jackson Center, OH 45334-0629 • (937) 596-6111