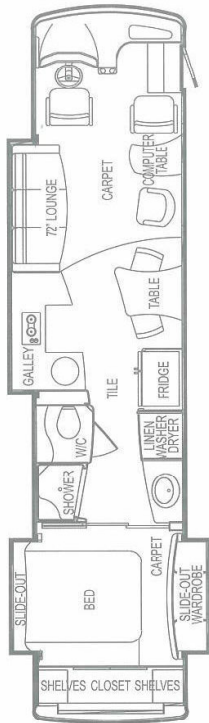


2006 AIRSTREAM FLOORPLANS & SPECIFICATIONS

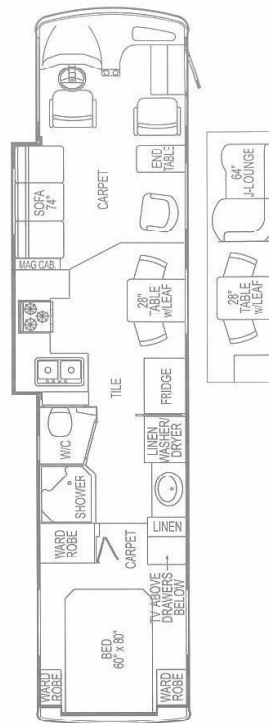
A-SERIES & LAND YACHT XL



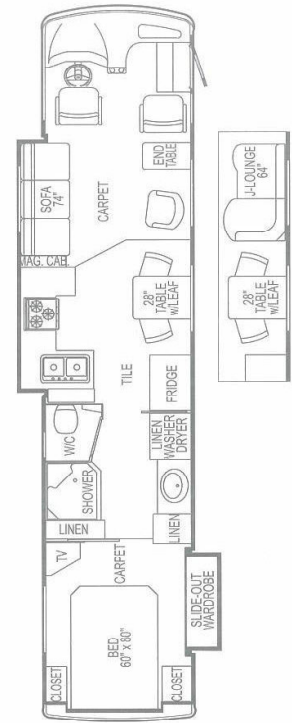
A-Series A37



A-Series A39



LYXL 390



LYXL 396

A-Series	A37	A39	Land Yacht XL	390	396
Exterior height with A/C	11'10"	11'10"	Exterior height with A/C	11'10"	11'10"
Exterior length	37'4"	39'4"	Exterior length	39'	39'
Exterior width	101"	101"	Exterior width	101"	101"
Interior head room	78-1/2"	78-1/2"	Interior head room	78-1/2"	78-1/2"
Interior width	95"	95"	Interior width	95"	95"
Exterior storage volume (cu. ft.)	90	115	Exterior storage volume (cu. ft.)	154	154
Freightliner XRC 400 HP Cummins ISL	228" WB	252" WB	Freightliner 400 HP Cummins	252" WB	252" WB
UBW with full fuel tank (lbs)	TBD	TBD	UBW with full fuel tank (lbs)	25,058	26,377
NCC without options, fluids or cargo (lbs)	TBD	TBD	NCC without options, fluids or cargo (lbs)	5,942	4,623
GVWR (lbs)	32,000	32,000	GVWR (lbs)	32,000	32,000
GAWR front (lbs)	12,000	12,000	GAWR front (lbs)	12,000	12,000
GAWR rear (lbs)	20,000	20,000	GAWR rear (lbs)	19,000	19,000
Seating capacity / sleeping capacity	5 / 4	5 / 4	Seating capacity / sleeping capacity	5 / 4	5 / 4
Fuel tank capacity (gal)	100	150	Fuel tank capacity (gal)	150	150
Water tank with drain valve (gal)	105	105	Water tank with drain valve (gal)	105	105
Black water tank (gal)	55	55	Black water tank / gray water tank (gal)	55 / 79	55 / 79
Gray water tank (gal)	79	79	LPG (lbs)	182	182
Hydro-hot interior heating system	STD	STD	Water heater (gal) with electronic ignition	10	10
Fridge (cu. ft.)	23	23	Furnace - dual (BTU)	34,000 & 16,000	34,000 & 16,000
			Fridge (cu. ft.)	10	10

oo