

adventure, inspired by
AIRSTREAM

TRAVEL TRAILERS



AIRSTREAM TRAVEL TRAILERS



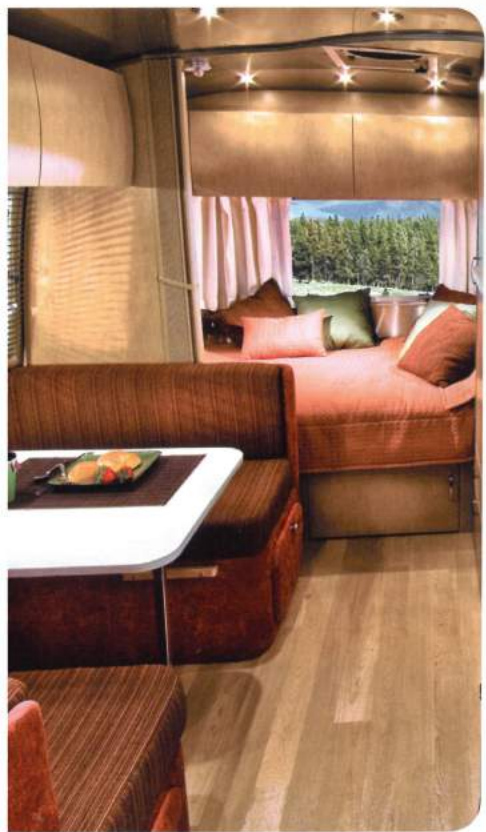
INSPIRING ADVENTURE FOR 80 YEARS

In 1931 Airstream began with a dream to create lightweight travel trailers that slipped cleanly through the wind. And with it was born another dream, one of new freedoms, new places, new experiences, and new friendships. It was a dream so powerful and so enduring that it did far more than create a new way to travel; it created a new way of life shared by thousands upon thousands of families.

This latest fleet of Airstream Travel Trailers continues the tradition of extraordinary design and hand-crafted quality that has made Airstream world famous. Following our founder Wally Byam's credo, "Let's not make changes, let's make only improvements," this fleet offers the latest technology advancements and conveniences in a way that is distinctly Airstream. With travel trailers perfect for everyone from first-timers to seasoned Airstreamers, you're sure to find one ideal for the adventure that awaits you around the next bend!

Bob Wheeler
President
Airstream, Inc.





One look and you know exactly what an Airstream is all about. It's meant to be lived in. It's meant to move. It's meant to help people reconnect with their world, without trampling it.

“No one has yet to surpass them,” said architect Margaret McCurry in Architectural Digest. Perhaps Airstream Chairman Larry Huttle summed it up best when he said “there’s a spiritual aspect to owning one. There is a wandering spirit to the people who buy this product. They’re looking for adventure – for what’s beyond that next ridge or horizon – they’re explorers at heart.”

An iconic design. An object of desire. A symbol of adventure. An Airstream.

AERODYNAMICS



**SUPERIOR CROSSWIND DEFLECTION
AND LOWER CENTER OF GRAVITY
PROMOTE FAR BETTER STABILITY
THAN OTHER TRAVEL TRAILERS.**



Trailer image is for illustration purposes only

**HIGHER
TOWING MPG***

The aerodynamic design of Airstream trailers contributes up to a 20% advantage in towing efficiency over standard travel trailers.

LIGHTWEIGHT. STREAMLINED. FUEL EFFICIENT.

One part rocket science, two parts common sense. Airstream founder Wally Byam knew that a rounded low-profile shape would make towing easier and more stable. And he knew that aluminum would make his trailers as light as possible. The resulting combination has been a symbol of



Trailer image is for illustration purposes only

adventure, and an icon of the open road for decades. Today that classic design is more current than ever, requiring less fuel and horsepower on your way to adventure. Smart. Fuel-Efficient. Beautiful. Since 1931.

*Actual mileage may vary due to load, driving style, driving conditions and tow vehicle.



CTION
AVITY
ILITY
ERS.



only

road for decades. Today that classic
quiring less fuel and horsepower on
-Efficient. Beautiful. Since 1931.

DURABILITY

SEMI-MONOCOQUE CONSTRUCTION

Inner and outer layers of stretched aluminum skin riveted to extruded aluminum frames provide greater rigidity and durability.



STRONG. STABLE. LOTS OF INTEGRITY.

No wonder Airstreams are so admired. Airstream travel trailers are respected and admired for their superior structural integrity. That's because Airstream employs semi-monocoque construction, consisting of an inner and outer layer of aluminum skin. Semi-Monocoque. It's a term that describes the double layers of aluminum that give the Airstream its unique silhouette. Airplanes use the

STABILITY











LOW CENTER OF GRAVITY

Rubber torsion axle and wheels with undermounted holding tanks provide a low center of gravity.

same construction for optimal aerodynamics. This aluminum is stretched and riveted to the frame, working as an integral part of the structure. Every Airstream is hand-built with extreme attention to detail. Every one, a work of art. Every one, a feat of engineering. In our decades of practice, we've put more than 100,000 of these creations on the road.

TRAVEL TRAILER FLEET AT-A-GLANCE

			Length	GVWR	Sleeping Capacity
 SPORT Lightweight affordability.		Décors available in all Sport models: <ul style="list-style-type: none"> • Mochablue • Sharksfin • Oatmeal • Cinnabar 	16'	3,500	2-3
			22'FB	4,500	2-4
 FLYING CLOUD Contemporary comfort and practicality.		Décors available in all Flying Cloud models: <ul style="list-style-type: none"> • Stratus • Mochablue • Mica • Burnt Sienna • Midnight Sun 	19'	4,500	2-4
			20'	5,000	2-4
			23'	6,000	2-4
			23'FB	6,000	2-4
			25'FB	7,300	2-5
			27'FB	7,600	2-5
			28'	7,300	2-6
			30'	8,800	2-6
 Classic Traditional styling without compromise.		Décors available in all Classic models: <ul style="list-style-type: none"> • Praline • Jade • Cocoa 	27'FB	9,000	2-5
			30'	10,000	2-6
			31'	10,000	2-6
 International Sleek contemporary sophistication.		Décors available in all Signature Series models: <ul style="list-style-type: none"> • Cilantro • Yellowstone • Paprika • Taupe Ultraleather 	16'	4,300	2-3
			19'	4,500	2-4
			23'	6,000	2-5
		Décors available in all Serenity models: <ul style="list-style-type: none"> • Mint Green • Soy Brown • Taupe Ultraleather 	25'FB	7,300	2-5
			27'FB	7,600	2-5
			28'	7,300	2-6

CHARMING AND NIMBLE SINCE 1931.



In 1961 Airstream introduced the first Bambi as a revolutionary lightweight single axle travel trailer, a design that has stood the test of time. It's won the hearts and captured the imaginations of travelers. It travels our lanes and highways, exploring every nook, cranny, and scenic vista from one end of the continent to the other. The Bambi classification is reserved for all Airstream travel trailers that are less than 22 feet in length.

GLANCE

Length	GVWR	Sleeping Capacity
16'	3,500	2-3
22'FB	4,500	2-4
19'	4,500	2-4
20'	5,000	2-4
23'	6,000	2-4
23'FB	6,000	2-4
25'FB	7,300	2-5
27'FB	7,600	2-5
28'	7,300	2-6
30'	8,800	2-6
27'FB	9,000	2-5
30'	10,000	2-6
31'	10,000	2-6
16'	4,300	2-3
19'	4,500	2-4
23'	6,000	2-5
25'FB	7,300	2-5
27'FB	7,600	2-5
28'	7,300	2-6

that has stood the test of time. It's won k, cranny, and scenic vista from one end than 22 feet in length.



DESIGNED FOR THE ROAD. NOT THE LANDFILL.

Built by hand by American craftsmen. Few things in life have proven to be as durable as an Airstream. Designed to spend time on the road and not in a landfill, nearly 70% of all Airstreams ever built are still on the road today. While other products are designed to wear out, Airstreams are designed to be handed down through the generations.

Silver is green. We also work with nature, not against it. Our low profile and rounded, slippery shape make for better towing in every respect.

As a result, Airstreams enjoy a 20% advantage in towing efficiency over standard “white box” trailers. Over the life of your Airstream, that’s a lot of fuel saved.

Built to pass down, not break down. With a fanatical attention to quality and functional design, Airstream consistently outperforms other travel trailers. Designed with exceptional rigidity and a low center of gravity, Airstream offers far better stability and driving safety than their boxy counterparts. Plus, Airstream’s remarkable longevity has resulted in equally impressive resale values.



22 SPORT BAMBI

SPORT TRAVEL TRAILERS:

2 FLOORPLANS, 16, 22

Lightweight and nimble, the Airstream Sport line sets a new standard for ease of use – perfect for those who want to just hitch-up and go. Airstream Sport travel trailers are true premium compact trailers that let you live large. Smart floorplans

maximize space and minimize waste in two easy-to-handle lengths. Spacious and airy with its own lights, water, shower and fuel for cooking – plus more creature comforts than some trailers twice their size have – the Airstream Sport offers



22 SPORT BAMBI



▲ 22 Sport Bambi Lavatory

the best travel trailer investment available. So choose your floorplan, choose the styling, then choose a destination. Whether it's a week of canoeing in Minnesota's Boundary Waters or three nights of music at California's Monterey Jazz Festival, you'll enjoy all the comforts of home no matter how far the road takes you. The Airstream Sport offers nothing less than a personal declaration of independence. So get out there – your adventure awaits!

▼ 22 Sport Bambi Back-to-Front in Mochablue Décor



two easy-to-handle lengths. Spacious and
and fuel for cooking – plus more creature
r size have – the Airstream Sport offers



20 FLYING CLOUD BAMBI



FLYING CLOUD TRAVEL TRAILERS:

11 FLOORPLANS, 19 – 30

When you're ready to take a break from the great outdoors, the Flying Cloud invites you inside with a flair of modern design. From fabrics to fixtures to cabinetry, the Flying Cloud line reflects your taste with clean, comfortable, contemporary styling

throughout. The right-sized travel trailer for an adventure, the Airstream Flying Cloud combines lightweight ruggedness with total practicality.



er for an adventure, the Airstream
edness with total practicality.



▲ 30 Flying Cloud Galley
with Ultraleather
Recliner Option



▲ 20 Flying Cloud
Bambi Galley

Advanced storage solutions and multi-functional workspaces make the Flying Cloud the perfect choice for extended travel or full-time use. With its eleven different floorplans and a variety of options, it's no wonder it has been one of Airstream's most popular models for decades.

So no matter if you're a first-time Airstreamer or seasoned veteran of the road, the Flying Cloud gets you on your way to your next adventure in contemporary style, luxurious comfort and long-lasting value.

▼ 30 Flying Cloud Dinette and Lounge in Burnt Sienna Décor with Ultraleather Recliner Option



AIRSTREAM TRAVEL TRAILERS

Classic
L I M I T E D



30 CLASSIC LIMITED

CLASSIC LIMITED TRAVEL TRAILERS:

7 FLOORPLANS, 27, 30 AND 31

Forget what you thought or imagined luxury, comfort and practicality could be in a travel trailer. Designed for long-term or full-time use, the Airstream Classic Limited takes it a step farther with traditional styling that never forces you to compromise. The flagship of the Airstream travel trailer fleet, the Classic Limited line offers elegant

floorplans with outstanding storage capacity, residential-style galleys, spacious living areas and private sleeping quarters. Inside you'll find generously appointed interiors with real hickory hardwood cabinetry, Corian® countertops, Moen® fixtures, plush furnishings and so much more. The Airstream Classic Limited is classic

▼ 31 Classic Limited Dining Area in Cocoa Décor



▲ 27 Classic Limited Galley



▲ 30 Classic Limited with
Ultraleather Sofa Option
in Cocoa Décor



Airstream – the perfect expression of our commitment to design, innovation and quality. So go ahead and leave home without leaving behind the comforts of home. No corners have been cut and nothing spared in creating a living space that lets you entertain in style, dine in comfort and relax in peace.

No other travel trailer comes close to creating this luxurious residential environment. To that we added exterior storage, smartly placed hookups and easy-out awnings that expand living area even further into the great outdoors. So no matter where you pursue your next adventure, Airstream Classic Limited travel trailers make you feel right at home – which, of course, you are.



27 FB INTERNATIONAL



INTERNATIONAL TRAVEL TRAILERS:

6 FLOORPLANS, 16 – 28

The Airstream International line redefines upscale and contemporary, sleek sophistication. For designer styling as unique as you are, choose from two breathtaking interior décors: the Signature Series and the Serenity. Intuitive floorplans and spatial design do away with any sense of clutter without sacrificing charm. Modern color options and fabric choices complement the high contrast aluminum and laminate elements, creating a subtle but magical connection between the exterior

and interior space. Both styling packages feature “vista view” and panoramic windows, truly bringing the outside in. At night, strategically-placed recessed halogen lighting sparkles like starlight across the interior aluminum skin. Every color, shape, surface and texture contribute to an atmosphere of relaxed modernism, with the perfect balance of luxury and streamlined efficiency that give this series its unmatched international flair that follows wherever the road takes you.

▼ 23 International Signature Series Galley



▲ 23 International Signature Series Lounge in Paprika Décor



▲ 23 International Signature Series Galley

INTERNATIONAL SIGNATURE SERIES

From award-winning architect and designer Christopher C. Deam, comes the Signature Series CCD. Inspired by the desire to visually echo the reflective exterior, its interior design combines polished aluminum with luxurious Wenge laminate.

With six floor plans to choose from, the Signature Series CCD offers the discriminating consumer a wide array of choices for a wide array of destinations. Whether you're taking a road trip to Palm Springs or creating a unique backyard guest house, the Signature Series makes a statement.



▼ 25 International Serenity in Mint Green Décor



▲ 25 International Serenity
Bedroom in Mint Green Décor



▲ 25 International
Serenity Galley

INTERNATIONAL SERENITY

For the utmost in tranquility, Airstream has created the International Serenity. Here, every interior shape, surface, and color is designed to envelop the mind and body in a soothing den of luxury and comfort.

With six floor plans to choose from following today's hottest design cues, the Serenity captures a tasteful "east meets west" elegance. With premium laminates, textured countertops, bamboo-inspired flooring, and accents incorporating lemongrass and rice paper, you'll feel the calming spirit the moment you enter. Whether you're a zenful soul or simply a fan of Asian design, the Serenity delivers a one-of-kind travel trailer atmosphere.



SPORT



SPORT TECHNICAL SPECIFICATIONS

	16	22FB
Exterior Length	16' 4"	21' 8"
Width Exterior	8'	7' 3.25"
Width Interior	7' 7"	6' 11.75"
Height Exterior w/ A/C	9' 4"	8' 11"
Height Interior w/ A/C	6' 4.5"	6' 3"
Hitch Ball Height	18"	17.25"
Hitch Weight (w/ LP & w/o options, water & cargo) (lbs.)	446	393
Unit Base Weight (w/ LP & w/o options, water & cargo) (lbs.)	2,897	3,594
Gross Vehicle Weight Rating (U.S.) (lbs.)	3,500	4,500
Net Carrying Capacity (NCC=GVR-UBW) (lbs.)	603	906
Fresh Water Tank w/ drain valve (gal.)	23	20
Black Water Tank (gal.)	N/A	18
Gray Water Tank (gal.)	N/A	24
Combination Black & Gray Tank (gal.)	21	N/A
Water Heater w/ electronic ignition (gal.)	6	6
A/C (BTU)	11,000	13,500
Furnace (BTU)	12,000	12,000
LPG (lbs.) (2 - 20lb. tanks) (lbs.)	40	40
Deep Cycle Battery (lead acid) Group 24	1	1
Sleeping Capacity	2-3	2-4

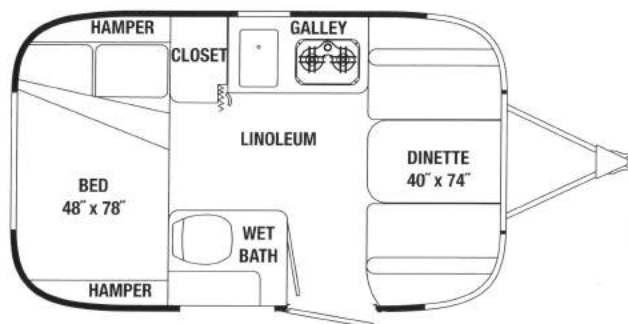
Décor:

Oatmeal
Mochablue
Cinnabar
Sharksfin

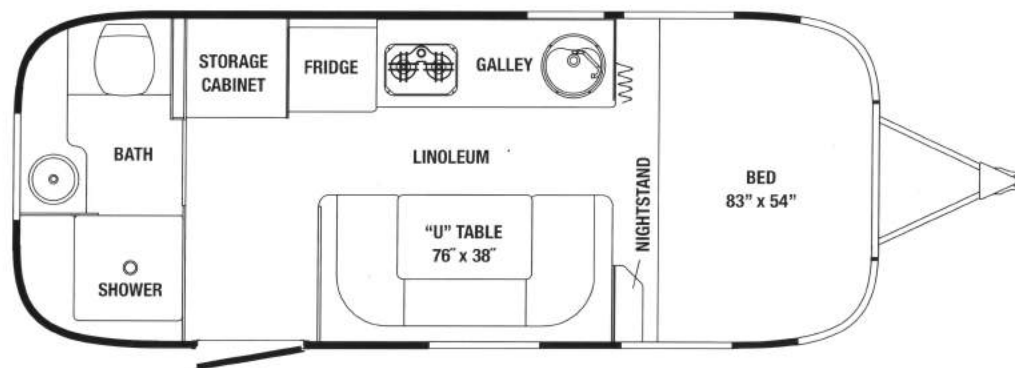
Please visit www.airstream.com to see a full set of model specifications, floorplans, features and options, and to find your nearest Airstream dealer.

SPORT FLOORPLANS

16 SPORT BAMBI



22 FB SPORT BAMBI



FLYING CLOUD

FLYING CLOUD TECHNICAL SPECIFICATIONS

	19	20	23	23FB	25FB	27FB	28	30
Exterior Length	19' 2"	20' 10"	23'	23' 9"	25' 11"	28'	27' 11"	30' 11"
Width Exterior	8'	8'	8'	8'	8' 5.5"	8' 5.5"	8' 5.5"	8' 5.5"
Width Interior	7' 7"	7' 7"	7' 7"	7' 7"	8' 1"	8' 1"	8' 1"	8' 1"
Height Exterior w/ A/C	9' 5"	9' 5"	9' 5"	9' 5"	9' 7"	9' 7"	9' 7"	9' 7"
Height Interior w/ A/C	6' 4.5"	6' 4.5"	6' 5"	6' 5"	6' 5"	6' 5"	6' 5"	6' 5"
Hitch Ball Height	17.75"	17.75"	17.75"	17.75"	17.75"	17.75"	17.75"	17.75"
Hitch Weight (w/ LP & w/o options, Water & Cargo) (lbs.)	550	631	779	467	837	791	976	880
Unit Base Weight (w/ LP & w/o options, water & cargo) (lbs.)	3,792	4,211	4,708	4,746	5,443	5,808	5,919	6,322
Gross Vehicle Weight Rating (U.S.)	4,500	5,000	6,000	6,000	7,300	7,600	7,300	8,800
Net Carrying Capacity NCC=GVWR-UBW) (lbs.)	708	789	1,292	1,254	1,857	1,792	1,381	2,478
Fresh Water Tank w/ drain valve (gal.)	23	23	39	39	39	39	39	54
Black Water Tank (gal.)	18	18	18	18	39	39	35	38
Gray Water Tank (gal.)	21	21	21	30	37	37	37	38
A/C w/ heat pump (BTU)	13,500	13,500	13,500	13,500	13,500	15,000	15,000	15,000
Furnace (BTU)	16,000	18,000	18,000	18,000	25,000	25,000	30,000	30,000
LPG (lbs.) (2-30 lb. steel tanks)	60	60	60	60	60	60	60	60
Deep Cycle Battery (lead acid) Group 24	2	2	2	2	2	2	2	2
Sleeping Capacity	2-4	2-4	2-4	2-4	2-5	2-5	2-6	2-6

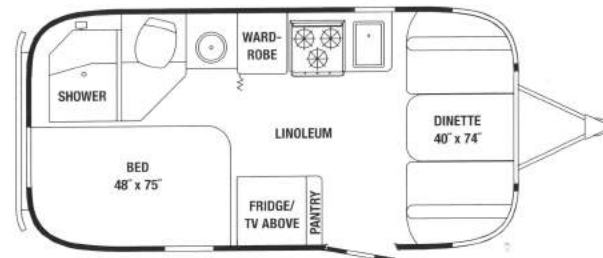
Décor:

Stratus
Burnt Sienna
Mochablue
Midnight Sun
Mica

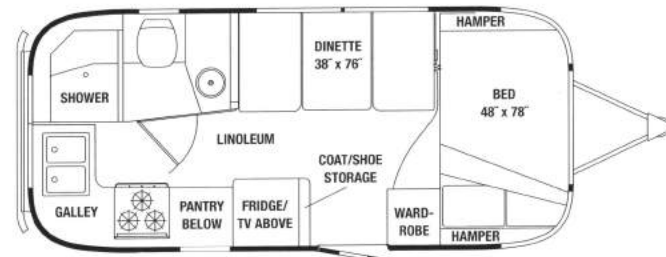
Please visit www.airstream.com to see a full set of model specifications, floorplans, features and options, and to find your nearest Airstream dealer.

FLYING CLOUD FLOORPLANS

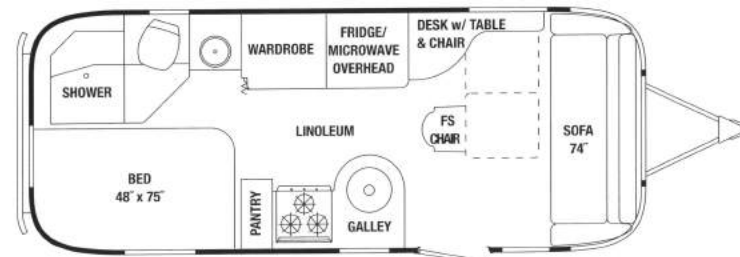
19 FLYING CLOUD BAMBI



20 FLYING CLOUD BAMBI

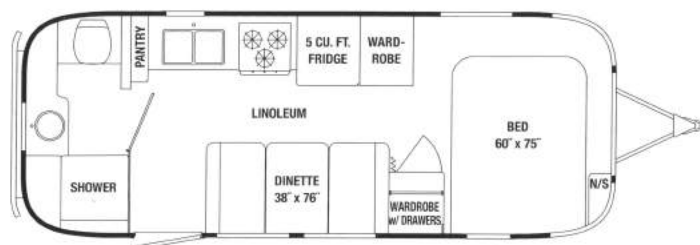


23 FLYING CLOUD

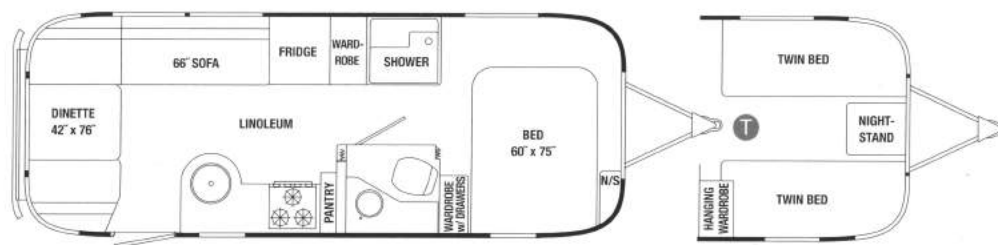




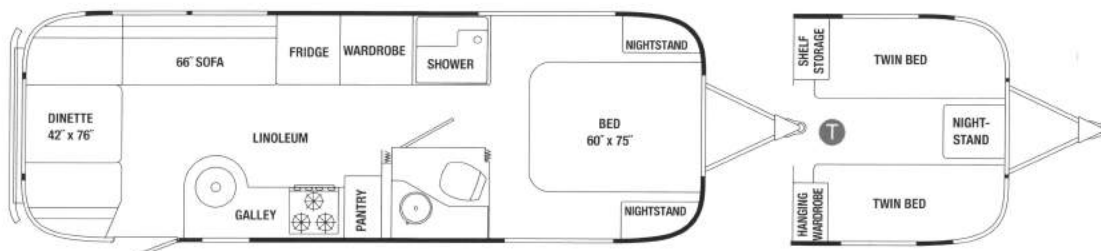
23 FB FLYING CLOUD



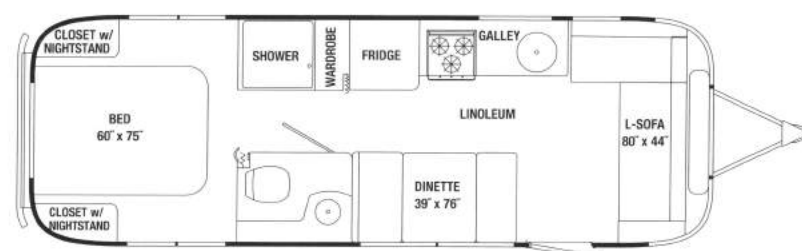
25 FB FLYING CLOUD



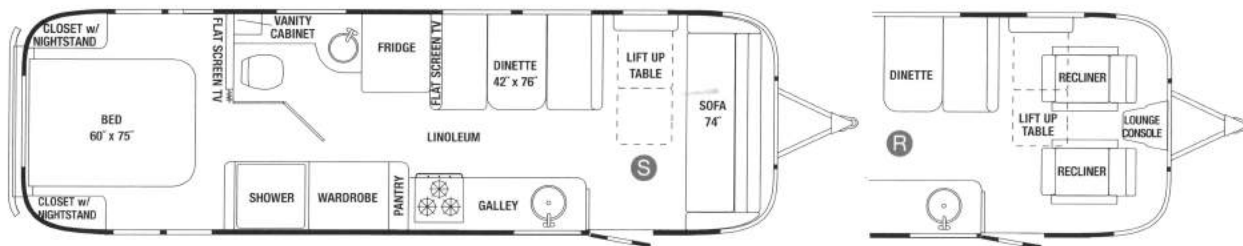
27 FB FLYING CLOUD



28 FLYING CLOUD



30 FLYING CLOUD



T = Twin R = Recliners S = Sofa

CLASSIC

CLASSIC LIMITED TECHNICAL SPECIFICATIONS

	<u>27FB</u>	<u>30</u>	<u>31</u>
Exterior Length	27' 9.5"	31'	31'
Width Exterior	8' 5.5"	8' 5.5"	8' 5.5"
Width Interior	8' 1"	8' 1"	8' 1"
Height Exterior w /A/C	9' 7.5"	9' 7.5"	9' 7.5"
Height Interior w /A/C	6' 5"	6' 5"	6' 5"
Hitch Ball Height	18.75"	18.75"	18.75"
Hitch Weight (w/ LP & w/o options, water & cargo) (lbs.)	792	773	805
Unit Base Weight (w/ LP & w/o options, water & cargo) (lbs.)	6,592	7,285	7,174
Gross Vehicle Weight Rating (lbs.) (U.S.)	9,000	10,000	10,000
Net Carrying Capacity (NCC=GVMR-UBW) (lbs.)	2,408	2,715	2,826
Fresh Water Tank w/ drain valve (gal.)	54	54	54
Black Water Tank (gal.)	39	39	39
Gray Water Tank (gal.)	37	37	37
Water Heater gas/electric w/ DSI (gal.)	6	6	6
A/C w/ heat pump (BTU)	15,000	15,000	15,000
Furnace (BTU)	30,000	34,000	34,000
LPG (2 - 40 lb. aluminum tanks) (lbs.)	80	80	80
Deep Cycle Battery (Lead Acid) Group 27	2	2	2
Sleeping Capacity	2-5	2-6	2-6

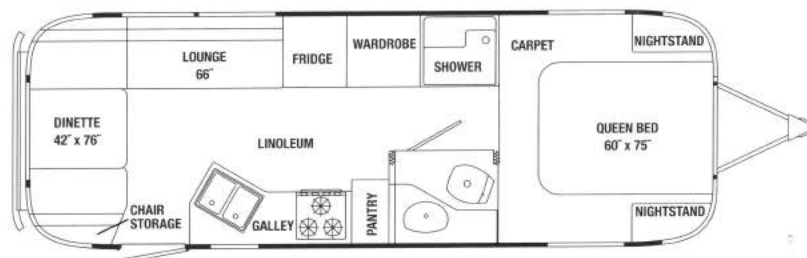
Décor:

Cocoa
Praline
Jade

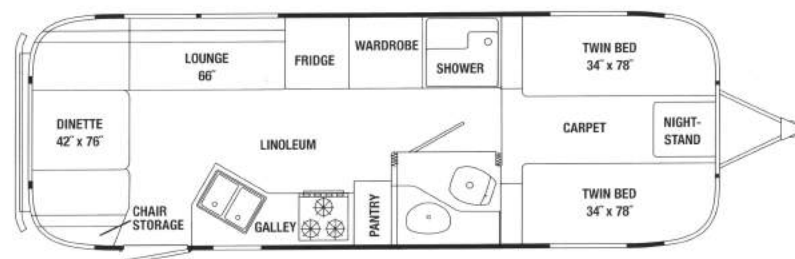
Please visit www.airstream.com to see a full set of model specifications, floorplans, features and options, and to find your nearest Airstream dealer.

CLASSIC LIMITED FLOORPLANS

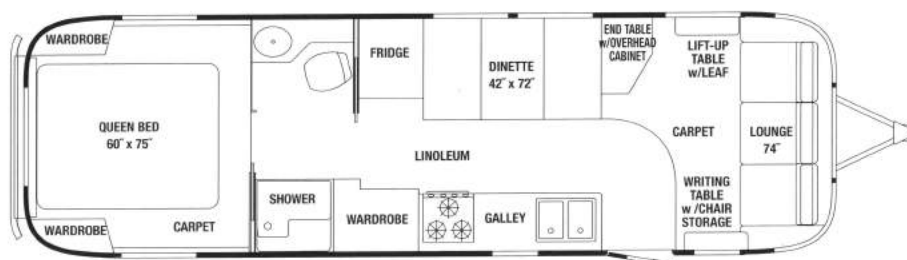
27 FB CLASSIC LIMITED Option A – Queen Size Bed with Two Nightstands



27 FB CLASSIC LIMITED Option B – Two Twin Size Beds with Nightstand and Trunk Storage



30 CLASSIC LIMITED Option A – A Queen Size Bed with Two Wardrobes

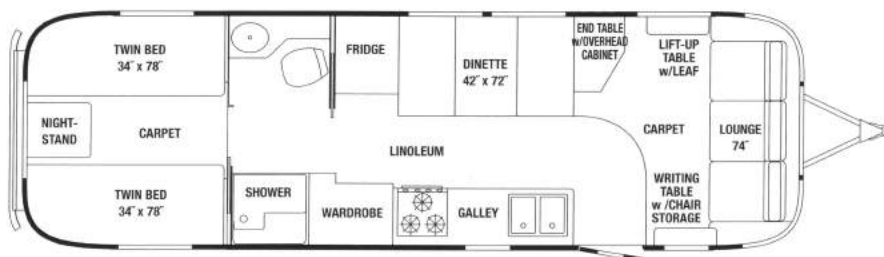




CLASSIC LIMITED FLOORPLANS

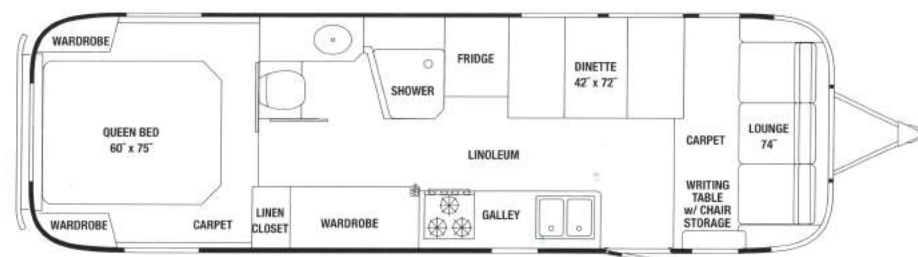
30 CLASSIC LIMITED Option B

Two Twin size Beds with Nightstand and Trunk Storage



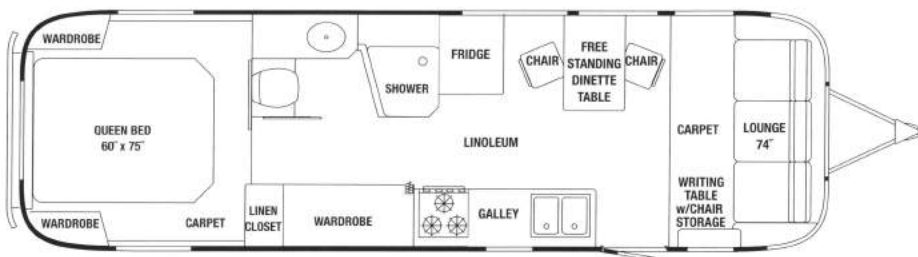
31 DINETTE CLASSIC LIMITED Option A

Queen Size Bed with Two Wardrobes



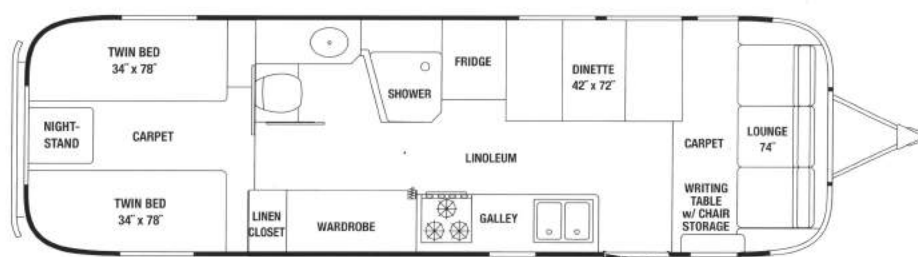
31 DINETTE CLASSIC LIMITED Option B

Free Standing Dinette with Two Chairs



31 DINETTE CLASSIC LIMITED Option C

Two Twin Size Beds with Nightstand and Trunk Storage



INTERNATIONAL

INTERNATIONAL TECHNICAL SPECIFICATIONS

	16	19	23D	25FB	27FB	28
Exterior Length	16' 7"	19' 2"	23'	25' 11"	28'	27' 11"
Width Exterior	8'	8'	8'	8' 5.5"	8' 5.5"	8' 5.5"
Width Interior	7' 7"	7' 7"	7' 7"	8' 1"	8' 1"	8' 1"
Height Exterior w/ A/C	9' 4"	9' 5"	9' 5"	9' 7"	9' 7"	9' 7"
Height Interior w/ A/C	6' 4.5"	6' 4.5"	6' 4.5"	6' 5"	6' 5"	6' 5"
Hitch Ball Height	18"	17.25"	17.75"	17.75"	17.75"	17.75"
Hitch Weight (w/ LP & w/o options, water & cargo) (lbs.)	459	550	720	833	770	950
Unit Base Weight (w/ LP & w/o options, water & cargo) (lbs.)	3,261	3,763	4,701	5,552	5,764	5,853
Gross Vehicle Weight Rating (U.S.)	4,300	4,500	6,000	7,300	7,600	7,300
Net Carrying Capacity (NCC=GVWR-UBW) (lbs.)	1,039	737	1,299	1,748	1,836	1,447
Fresh Water Tank w/ drain valve (gal.)	23	23	30	39	39	39
Black Water Tank (gal.)	N/A	18	18	39	39	35
Gray Water Tank (gal.)	N/A	21	21	37	37	37
Combination Black & Gray Tank (gal.)	21	N/A	N/A	N/A	N/A	N/A
Water Heater w/ electronic ignition (gal.)	6	6	6	6	6	6
A/C w/ heat pump (strip on 16') (BTU)	11,000	13,500	13,500	13,500	15,000	15,000
Furnace (BTU)	12,000	16,000	25,000	25,000	25,000	30,000
LPG (2 steel tanks) (lbs.)	40	60	60	60	60	60
Deep Cycle Battery (lead acid) Group 24	1	2	2	2	2	2
Sleeping Capacity	2-3	2-4	2-5	2-5	2-5	2-6

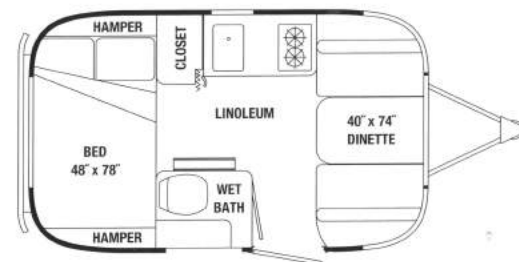
Signature Series Décors: Serenity Décors:

Cilantro	Mint Green
Paprika	Soy Brown
Yellowstone	Taupe Ultra leather
Taupe Ultra leather	

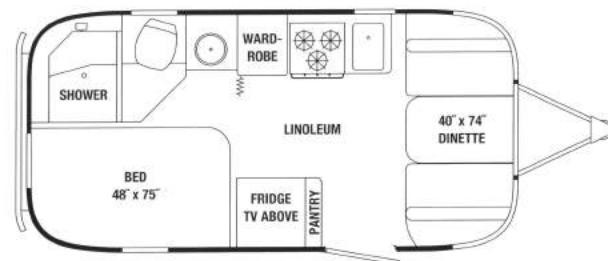
Please visit www.airstream.com to see a full set of model specifications, floorplans, features and options, and to find your nearest Airstream dealer.

INTERNATIONAL FLOORPLANS

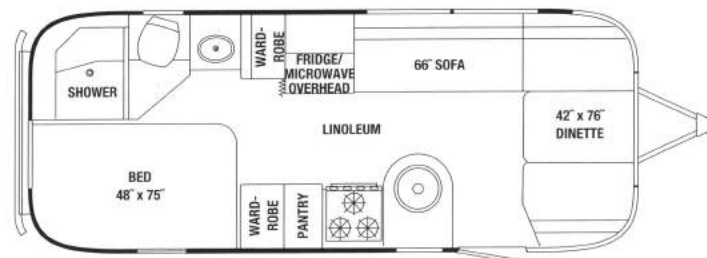
16 INTERNATIONAL SIGNATURE SERIES/ SERENITY BAMBI



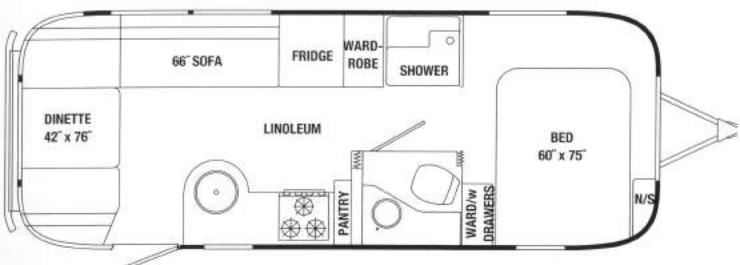
19 INTERNATIONAL SIGNATURE SERIES/ SERENITY BAMBI



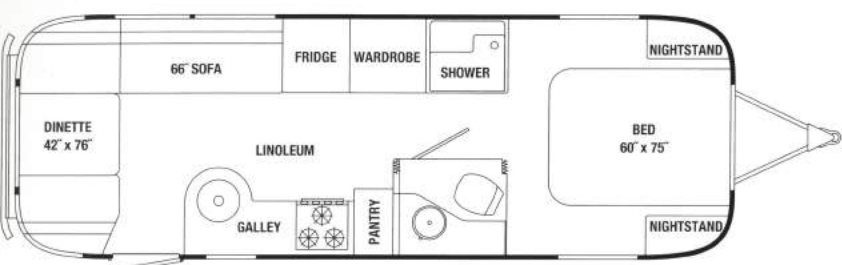
23 INTERNATIONAL SIGNATURE SERIES/ SERENITY



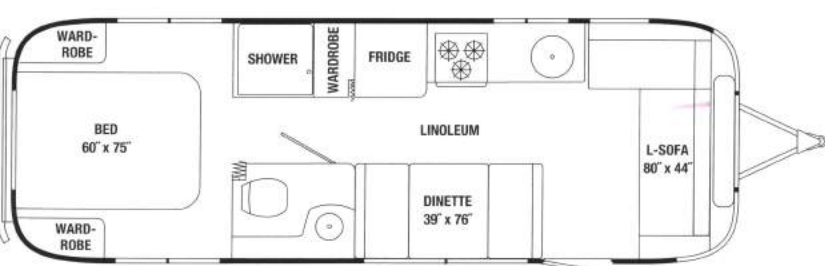
25 FB INTERNATIONAL SIGNATURE SERIES/ SERENITY



27 FB INTERNATIONAL SIGNATURE SERIES/ SERENITY



28 INTERNATIONAL SIGNATURE SERIES/ SERENITY



adventure, inspired by
AIRSTREAM



TRAVEL TRAILERS

TO THE RESTLESS SPIRIT

The Airstream Travel Trailer beckons to those driven by an insatiable desire to see more, to do more, and to live more. It calls to those who understand the allure of the open road, and the discovery of what lies beyond the next bend. And, it appeals to those who value independence and inspired design, and to those who recognize the quality and craftsmanship that have allowed one brand to stand the toughest test of all – *time*.

Adventure, Inspired by Airstream



THOR
INDUSTRIES, INC.

All content and images
© Airstream 2010

Travel Trailers 20k 09/10

Airstream, Inc.
419 West Pike Street
P.O. Box 629
Jackson Center, OH
45334 USA
937-596-6111
www.airstream.com

Product information, specifications, and photography in this brochure were as accurate as possible at time of printing. Photographs may contain some features that are optional on your vehicle. Since we continually strive to improve our products, actual products may differ. Prices and specifications are subject to change without notice. All capacities are approximate and dimensions are nominal. Some features or options may be different or unavailable in Canada.

Vehicle Loading – Every effort has been made to provide the greatest number of options for the recreation vehicle owner. Along with these choices comes the responsibility to manage the loads that are imposed by the choices so that they remain within the manufacturer's specified chassis weight limits. Do not overload the recreation vehicle.

Dry Weights – Based on standard features; optional equipment not included. Net carrying capacity (NCC) determined by subtracting unloaded vehicle weight (UVW) from gross vehicle weight (GVWR) and includes fluids, options, and cargo. Liquid capacities and weights are approximations only.

Warning – This information is intended as a guide only. Weights of individual vehicles may vary. Consult your owner's manual for complete loading, weighing, and towing instructions.