

NuTone Division

Scovill

INSTALLATION INSTRUCTIONS

MODEL 250 BUILT-IN FOOD CENTER

IMPORTANT INFORMATION

Read carefully before installation.

Where to Install the Power Unit

The power unit should be installed in the countertop of the base cabinet, with the housing below the countertop, and the 120V power wiring *with ground* permanently connected to the house wiring circuit. Provision should be made for electrical connections during rough wiring, with enough excess wire to reach to the front of the cabinets, at the proposed location of the power unit.

Follow the local electrical code for 120 Volt, 4 amp. load wiring. *Unit must be grounded.* A Green ground screw is provided in the power unit junction box.

TEMPLATE LOCATION (Fig. 1)

Allow a minimum height of 18" above top plate when power unit is installed below wall cabinets.

The Template must be located at least 3 $\frac{3}{4}$ " from walls to allow for sufficient attachment clearance and 1" from inside front of the cabinet.

Locate template in desired position on the countertop and mark location. If located above a drawer, see Figures 7, 8 & 9 for detailed instructions.

FIG. 2

Use a Saber Saw or a Keyhole Saw to cut out the countertop. Make cutout using care to prevent chipping of top. *DO NOT Exceed Maximum Dimensions Of Template.* Refer To Instructions On Template For Additional Information.

FIG. 3

Remove wiring knockout on bottom or side of power unit. (Side wiring must be completed after power unit is installed in countertop.) Loosen junction box cover. Run 14-2 wire *with ground* into junction box and secure with box connector. Make wiring connections White to White, Black to Black. Connect ground wire to green grounding screw in junction box.



Fig. 1

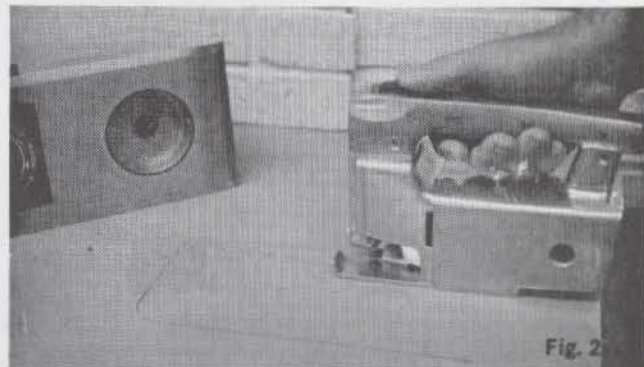
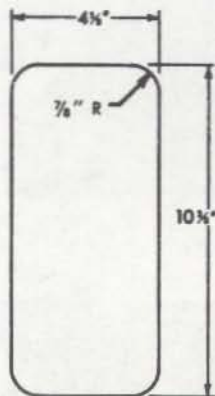


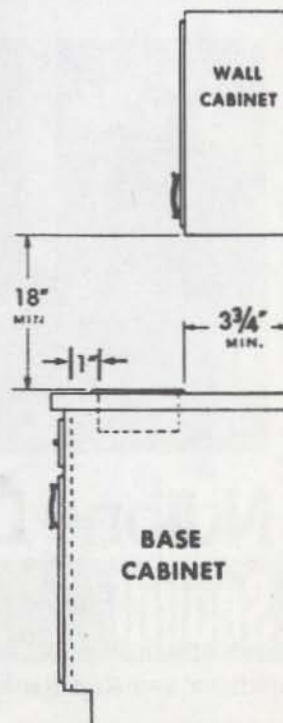
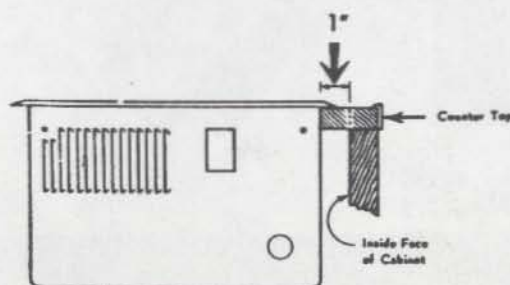
Fig. 2



Fig. 3



CUT-OUT
DIMENSIONS



FIGURES 4 & 5

Place power unit in cutout with junction box toward front of cabinets. Prior to mounting the unit, remove the switch knob and top plate. The top plate can be removed by lifting it up from the motor unit and removing the insert springs. (see Figure 6). Turn mounting screw, accessible through hole in switch plate, clockwise until clamp bracket is tight against underside of countertop, locking the unit securely in place. **DO NOT OVERTIGHTEN SCREW.**

FIG. 6

Position top plate as shown. Squeeze and insert springs of top plate into mounting slots at each end of the power unit. Align the top plate gasket over the motor housing and the switch well opening over the switch shaft. Push top plate down until it snaps into position flush against countertop. Replace two knobs supplied for the switch and appliance openings.

Follow These Instructions For Installation Above A Drawer.

FIG. 7

Pull out the drawer part way (under the proposed power unit location) and measure from countertop to drawer bottom, to be sure there is clearance for the power unit. This dimension should be at least 6 $\frac{3}{4}$ ".

FIG. 8

Follow all countertop instructions as outlined in "Template Location" and Fig. 2.

Due to limited space below power unit in "Above drawer" installations, wiring should be completed through side knock-out. Power unit must be mounted in place before wiring is installed.

To allow drawer to pull completely out, it is necessary to cut out part of the drawer back. To do this, pull drawer out slightly, drop a square down at each side of countertop cutout, and mark back of drawer. Draw parallel lines 1" farther out to allow an opening 2" wider than countertop cutout.

FIG. 9

Cut out back of drawer along these lines to a point at least 6 $\frac{3}{4}$ " below countertop. This will allow drawer to move freely after unit is installed. Follow instructions outlined in Figures 3 through 6 for final installation of power unit.



Fig. 4

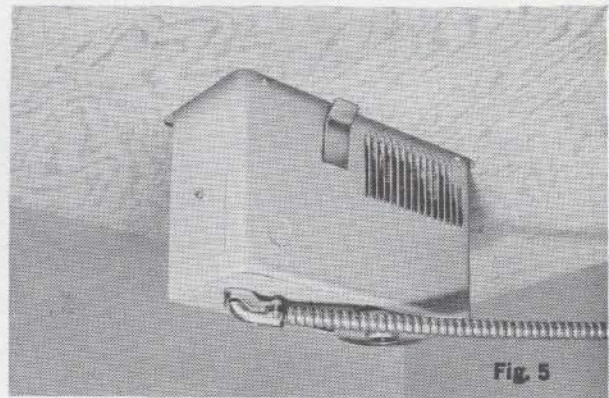


Fig. 5



Fig. 6

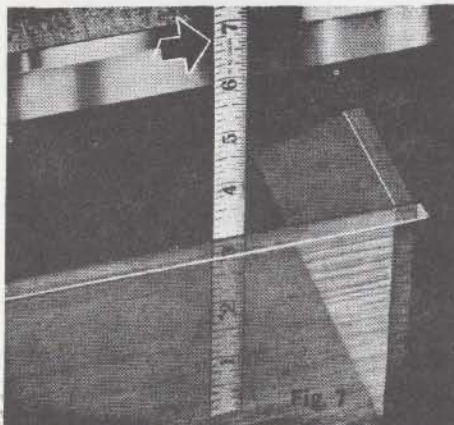


Fig. 7

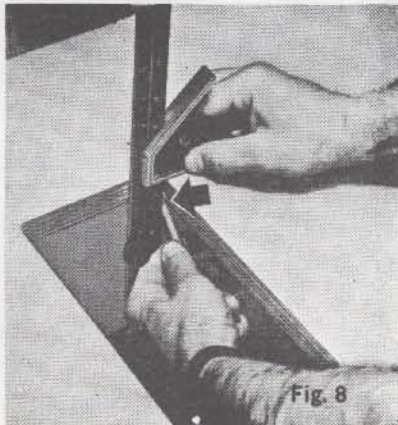


Fig. 8

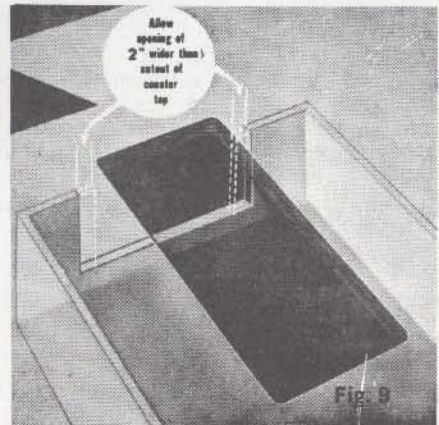


Fig. 9

NuTone Division

Scovill

Madison and Red Bank Rds.

Cincinnati, Ohio 45227

Phone 1-513-271-6500

1/72 Part No. 64830