

The greatest advance in modern trailer travel!



AIRSTREAM for '54

LIGHTWEIGHT TRAVEL TRAILERS

The greatest advance in modern trailer travel!



AIRSTREAM for '54

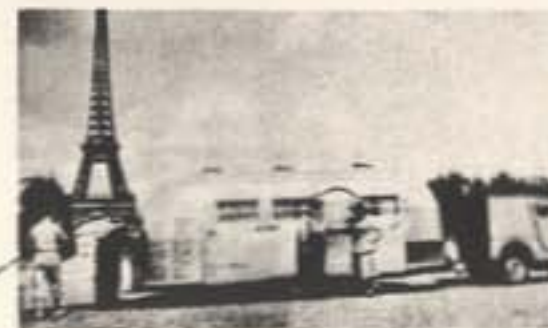
LIGHTWEIGHT TRAVEL TRAILERS





AIRSTREAM
TRAILERS, INC.

TRAVEL-TESTED OVER THE HIGHWAYS OF THE WORLD



Paris, France



Rome, Italy



Mexico City, Mexico



Cypress Point, California



West Coast of Mexico

TRAILER CARAVANS TO MEXICO, CENTRAL AMERICA AND EUROPE PIONEERED BY AIRSTREAM

Years of experience and millions of miles of travel testing are behind the many exclusive features incorporated in every Airstream. It will go anywhere, and to prove it we take them there — Mexico, Central America, Canada, Europe, Cuba and many other exciting places. In many instances, the Trailer Caravan Tours pioneered by Wally Byam were the first ever to go into some of these countries. Rough roads, steep grades, unbridged rivers and weather combined to put trailers to the most gruelling tests. What does this mean to you? Simply that the Airstream has no peer in travel trailers — it has gone and will go just any place that you could dream of wanting to go with your automobile.



A great big happy family — one of the first groups of Airstream Trailer Caravanners before they crossed the border into Mexico.

FAMOUS STREAMLINED DESIGN AND LIGHTWEIGHT CONSTRUCTION FOR FASTER, SAFER, EASIER TOWING

The great Airstream, engineered to go places with the greatest of ease, features genuine monocoque aircraft-type construction and design. It is built of the finest quality lightweight materials to be easy to tow . . . highly streamlined to reduce wind resistance . . . and scientifically assembled like an airplane to withstand vibration and make it durable, dependable and comfortable. There are no screws or nails in an Airstream. It features all-metal, all-aluminum, all-riveted construction with a $\frac{5}{8}$ " plywood floor the only wood in the trailer. The all-steel undercarriage is electrically welded and the entire body bolted to the frame. The entire body and undercarriage is made of load-bearing aluminum alloy and is permanently fastened with thousands of vibration-proof rivets. Every square inch of the Airstream is insulated with Aero-core fiberglass. There is no finer construction available anywhere. The Airstream is scientifically engineered and precision built. It costs a little more, but it is worth many times more than what you pay in trouble-free service, long life, satisfaction and comfort . . . truly the greatest advance in modern trailer travel.



Here's a remarkable demonstration
— so lightweight 4 Airstreams are
towed by an ordinary passenger car.

LIFETIME GUARANTEE

*Anything that goes wrong that
could possibly be our fault will be
repaired without charge at the factory,
for as long as you own your Airstream.*

AIRSTREAM TRAILERS, INC.

1755 N. Main Street,
Los Angeles 31, Calif.,
107 Church Street,
Jackson Center, Ohio.



◀ Airstream Trailers are
Guaranteed for Life
— Your Life!



CHASSIS CONSTRUCTION

HERE ARE THE FACTS ON AIRSTREAM CHASSIS CONSTRUCTION



The all-steel, all-welded chassis is specially designed by aeronautical stress analysts for maximum strength in motion. It is engineered to withstand the stresses and strains of all types of road conditions.



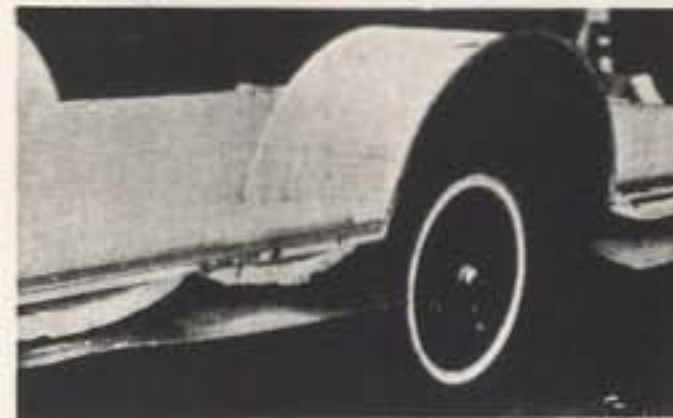
The floor is all-bolted. No nails or screws are used. 156 special, Seal-tight, carriage-type bolts secure the entire floor directly to the steel laterals of the chassis. The possibility of floor buckling through twisting and stress in action is completely eliminated.



The entire undercarriage is covered completely with a riveted aluminum underbelly. This reduces drag and wind resistance and provides essential protection from the elements, such as dust, mud, etc.



Every Airstream is equipped with large, automotive-type shock absorbers that cushion the ride, the trailer and its contents. These shock absorbers are as necessary in your trailer as in your car, yet to our knowledge only Airstream has them.



The ingenious wheel housing assembly is another outstanding Airstream feature. It is all-metal, lock-seamed, insulated and undercoated to keep the inside of your trailer dust-proof, mud-proof and pleasantly clean.



There is no unsupported overhang in the body of an Airstream. Ball to bumper structural main beams give full support to the body. The bumper is an integral part of the chassis and provides complete protection of the rear.

BODY CONSTRUCTION

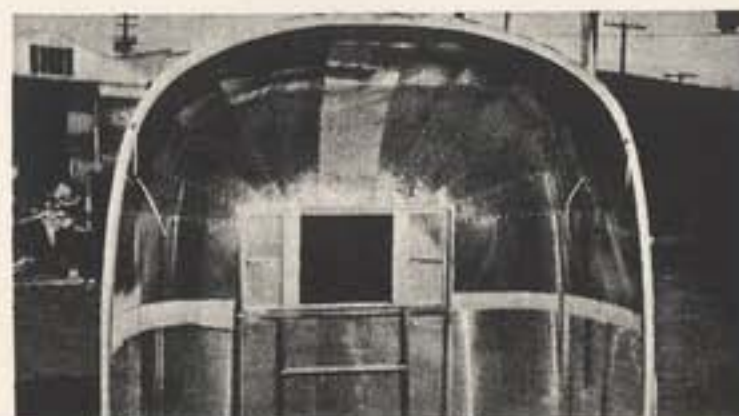
AIRSTREAM IS BUILT LIKE AN AIRPLANE...FEATURING



An outstanding feature of every Airstream is its all-riveted construction. There are over 9,000 rivets in the Flying Cloud alone. Once driven home they are there for life. Vibration, weather, nothing loosens them.



Stretch-formed, strain-hardened aluminum bows are exclusive with Airstream. They provide maximum strength, minimum weight and dimensional stability essential to any travel trailer.



The body of the Airstream is basically two complete aluminum shells, one inside the other. These are separated by fiberglass insulation and riveted together on stretch-formed bows into one unitized body. The aluminum sheets used are full load-bearing aircraft alloys.



Here's positive proof of Airstream's famous unitized, lightweight construction. The complete aluminum shell of the trailer is so light that it can easily be lifted by two men.

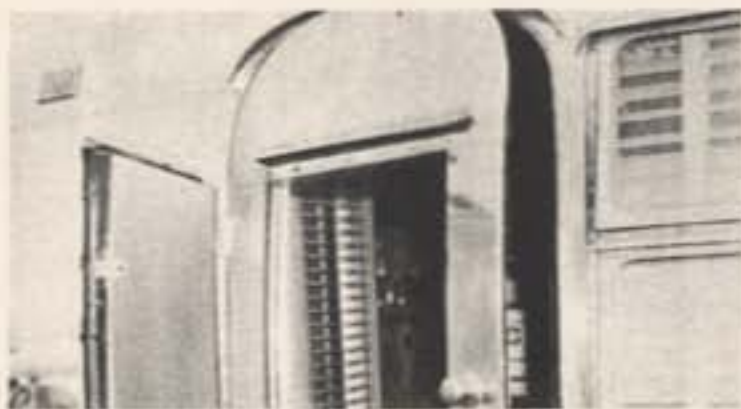


Every part of the Airstream is insulated with special aircraft-type fiberglass secured in place by a waterproof adhesive. This type of insulation is much lighter, more vibration-proof with many times the insulation value of ordinary fiberglass.

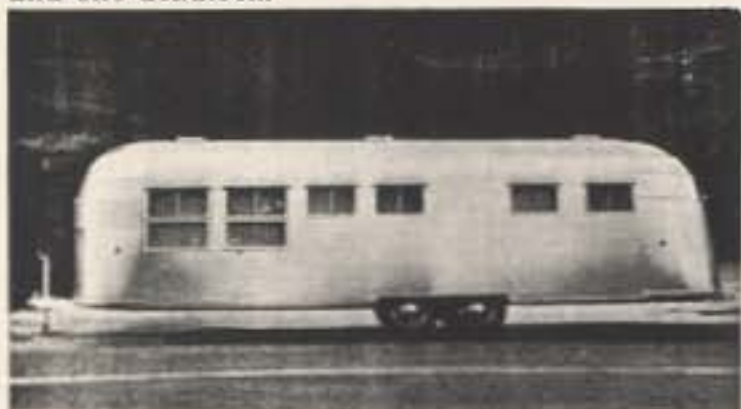


The Airstream interior is all-aluminum and all-riveted. Being metal it is impervious to moisture and will not absorb odors. It is fire-resistant and will not warp, crack or delaminate. It can even be washed down and has never been known to sweat.

HIGH-STRENGTH LOW-WEIGHT UNITIZED CONSTRUCTION



Exclusive Airstream doors are aircraft-type to assure true, permanent fit under vibration. They are made with a special stretch-formed door frame riveted to the body, contoured double rubber-sealed door and full panel nested screen door. Locks are of high quality, one spring loaded and one deadlock.



You will observe that every Airstream, small or large, uses the maximum number of windows possible. All windows are opening, rubber-sealed and strategically placed to provide the greatest amount of light and cross-ventilation.



Shape and streamlining have much to do with the towing ease of a trailer. The two trailers shown above are of the same height and width. But in wind tunnel tests, the streamlined Airstream proved to have 57% less wind resistance at 60 miles per hour.



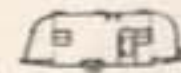
An important convenience and safety feature of every Airstream is the back "escape window". It is 18"x 40", large enough for anyone to climb out. Both window and screen hinge out for use in an emergency.



All wiring in the Airstream is Romex 12 and gauge, armored to give protection from abrasion and vibration. Joints are rubber and fire-taped; separate circuits provided for appliances.



To provide maximum safety in pulling your trailer, Airstream features exclusive "See-Thru" rear vision. In addition, running light, tail light, stop light and directional signals are standard on all models.



Airstream lightweight construction is further demonstrated by this young woman who holds in her hands all the structural members that go into a 22-ft. Flying Cloud - only 32 lbs.

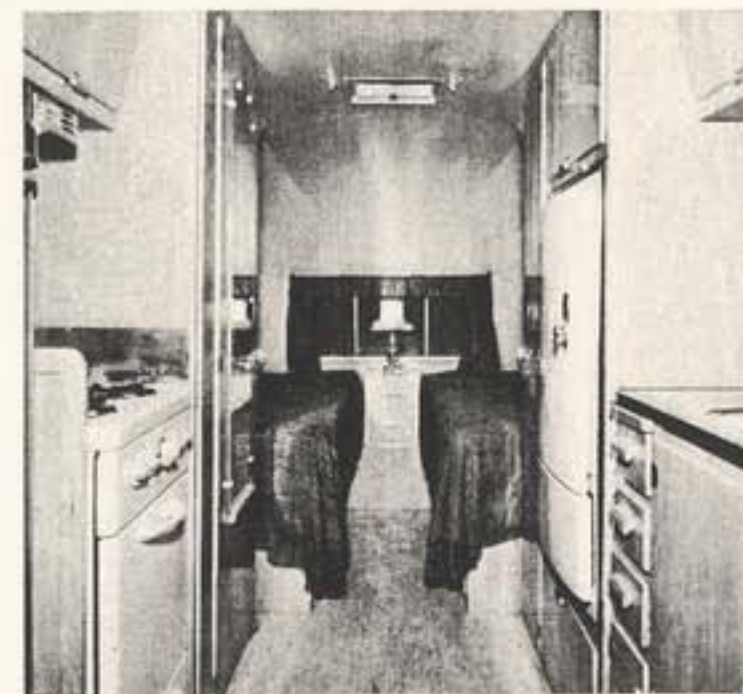


INTERIOR STYLING

Mattresses Solid 4 1/2" goosey flat
Cored "Airfoam" in Ceterul Ticking
Replaces Box Springs.

INTERIORS STYLED FOR BEAUTY, COMFORT AND CONVENIENCE

- ▶ **FLOORS** — Covered with high quality vinyl linoleum in pleasing neutral colors for lasting beauty and service.
- ▶ **PAINT** — Only special Zolotone paint used. It is more durable than enamel and produces a flat, washable, clean surface.
- ▶ **LIGHTS AND OUTLETS** — Conveniently located throughout the trailer and plentiful enough to cover every need.
- ▶ **CABINETS** — All hardwood in pleasing modern blonde with satin-smooth washable finish. Easy to clean.
- ▶ **HEATERS** — Your choice of oil burner with or without blower or butane radiant heaters. Radiant heated floors available at extra cost.
- ▶ **STOVES** — Apartment style stove, 4 burners, oven and broiler standard on all models except the Globe Trotter which has a wheel housing stove.
- ▶ **BEDS** — Posture-controlled with airfoam mattresses and box springs for luxurious sleeping comfort. Lightweight, sanitary.
- ▶ **REFRIGERATION** — Combination ice and electric standard in all models. Electric with freezer compartment, gas and household models optional at extra cost.
- ▶ **HOT WATER HEATERS** — 6 gallon electrically operated water heaters, 1,000-watt standard on all models. Butane heaters are also available.
- ▶ **TOILETS** — All-vented plumbing. Marine or tank type standard on all models. Other types optional at extra cost.
- ▶ **VENTS** — In all models, telescoping, with quick, easy action. Removable screens for easy cleaning.



COLORAMA INTERIORS

Airstream interiors are tastefully styled by Roger Kennedy, noted Hollywood designer. Special attention has been given to paint color, curtains, upholstery and arrangement to provide an atmosphere of easy relaxation. Keeping the woman in mind, many features have been incorporated to make her chores pleasant and convenient — formica galley tops, work areas, storage space, ample closets and many more. Everything convenient, easy to take care of and easy to clean. Above all, decor and design have been superbly harmonized to achieve maximum comfort and the luxurious feeling of home.



With an airstream, you can be completely independent of trailer parks or campgrounds for long periods of time. You can go where and when you want. Visit interesting parts of the way, place your own timetable, free from the care and problems of the everyday world. It can be done rather inexpensively too, depending on your needs. The self-contained unit used successfully in all Airstreams, Combs can easily be installed in your trailer for as little as \$145.

With a Combs Heating Unit, your car battery powers an electric heater, or a forced draft gas light.

Combs Heating Units come in 5, 10, 15, 20, 25, 30, 35, 40, 45, 50, 55, 60, 65, 70, 75, 80, 85, 90, 95, 100, 110, 120, 130, 140, 150, 160, 170, 180, 190, 200, 210, 220, 230, 240, 250, 260, 270, 280, 290, 300, 310, 320, 330, 340, 350, 360, 370, 380, 390, 400, 410, 420, 430, 440, 450, 460, 470, 480, 490, 500, 510, 520, 530, 540, 550, 560, 570, 580, 590, 600, 610, 620, 630, 640, 650, 660, 670, 680, 690, 700, 710, 720, 730, 740, 750, 760, 770, 780, 790, 800, 810, 820, 830, 840, 850, 860, 870, 880, 890, 900, 910, 920, 930, 940, 950, 960, 970, 980, 990, 1000.

Combs Heating Units are made of steel and wood.

Combs Heating Units are made from English water-carrying pipes and are designed to be used in a variety of ways.

Combs Heating Units are made in 3 sizes - 2, 4, and 6 cubic feet.

Combs Heating Units are made in 3 sizes - 2, 4, and 6 cubic feet.

Combs Heating Units are made in 3 sizes - 2, 4, and 6 cubic feet.

AIRSTREAM TRAILERS CAN BE COMPLETELY SELF-CONTAINED UNITS

refrigeration

heating

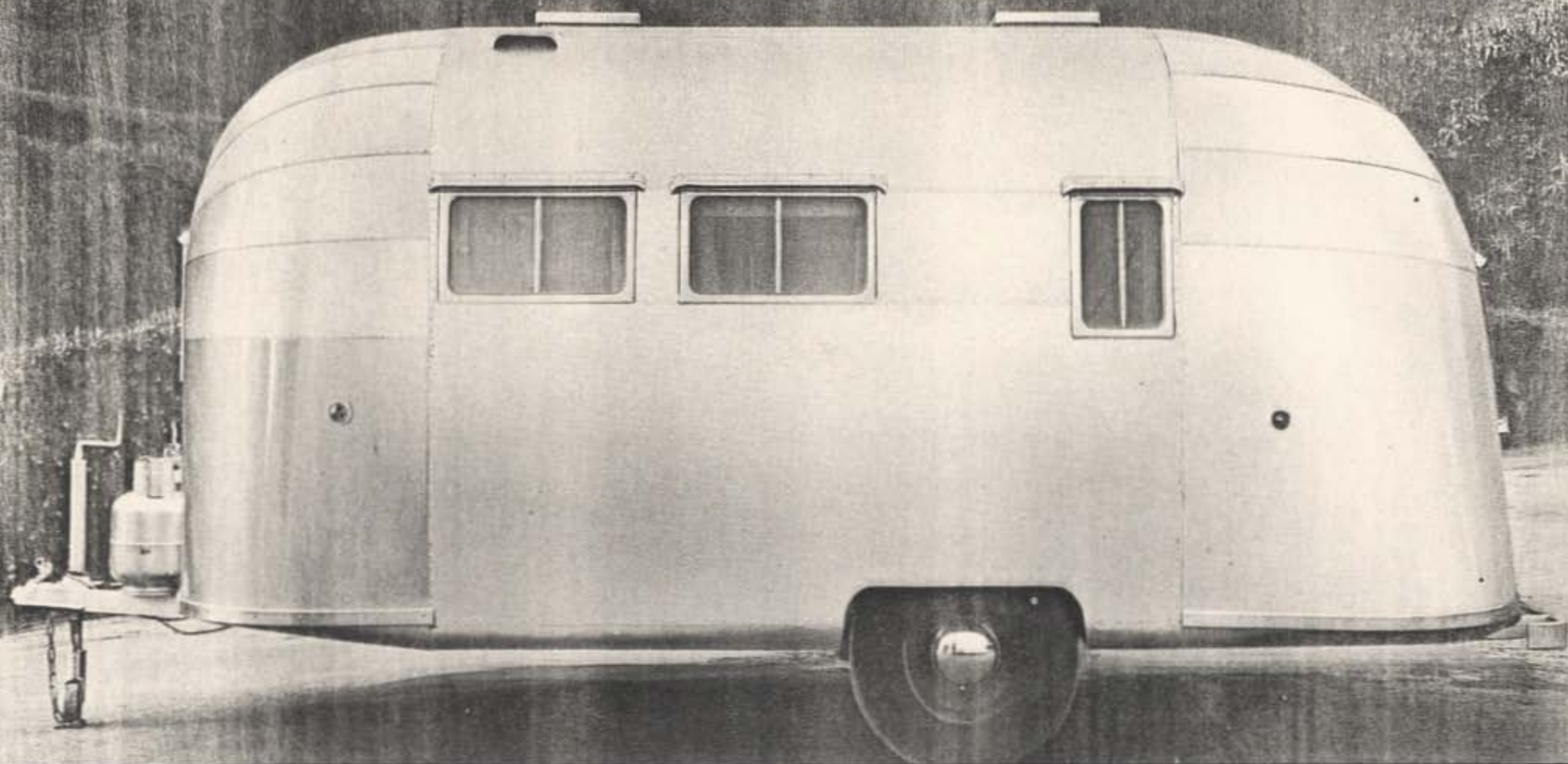
cooking

lighting

water

sanitation





16-FOOT AIRSTREAM GLOBE TROTTER

This is a trailer that is light, easy to pull in, light on the bills and has an "easy" layout. It is ideal for those who want a light yet sturdy travel trailer. Desirable for those who need for a sturdy yet light-weight travel trailer. The Globe Trotter is the perfect small home on wheels. It has all the amenities of a home, including rubber-sealed doors and windows, a built-in sink, built-in stove, built-in refrigerator and many other conveniences. The exterior of the trailer is usually painted in the Airstream "Silver" color. Special paint treatments are also available. The interior is finished with a variety of materials and is available in a variety of colors. The trailer is easy to move and change. It is the perfect travel trailer for the world's most small travel trailer.

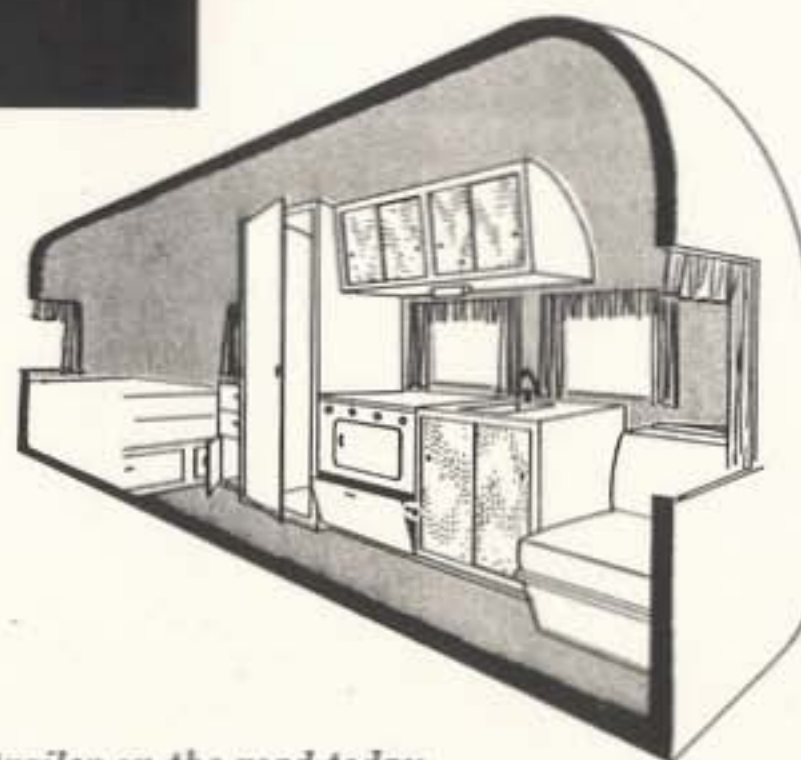
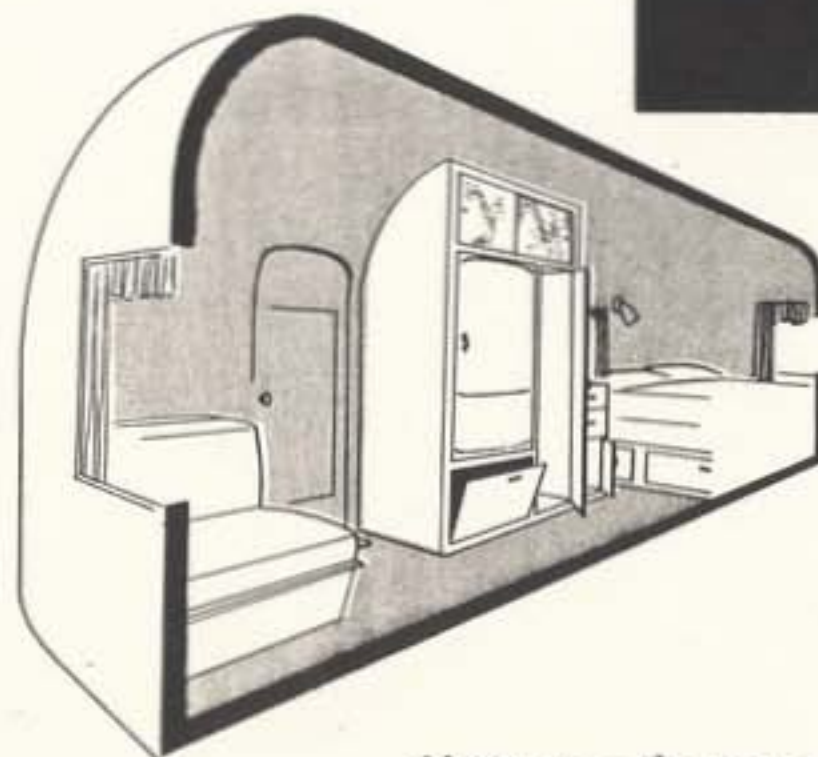
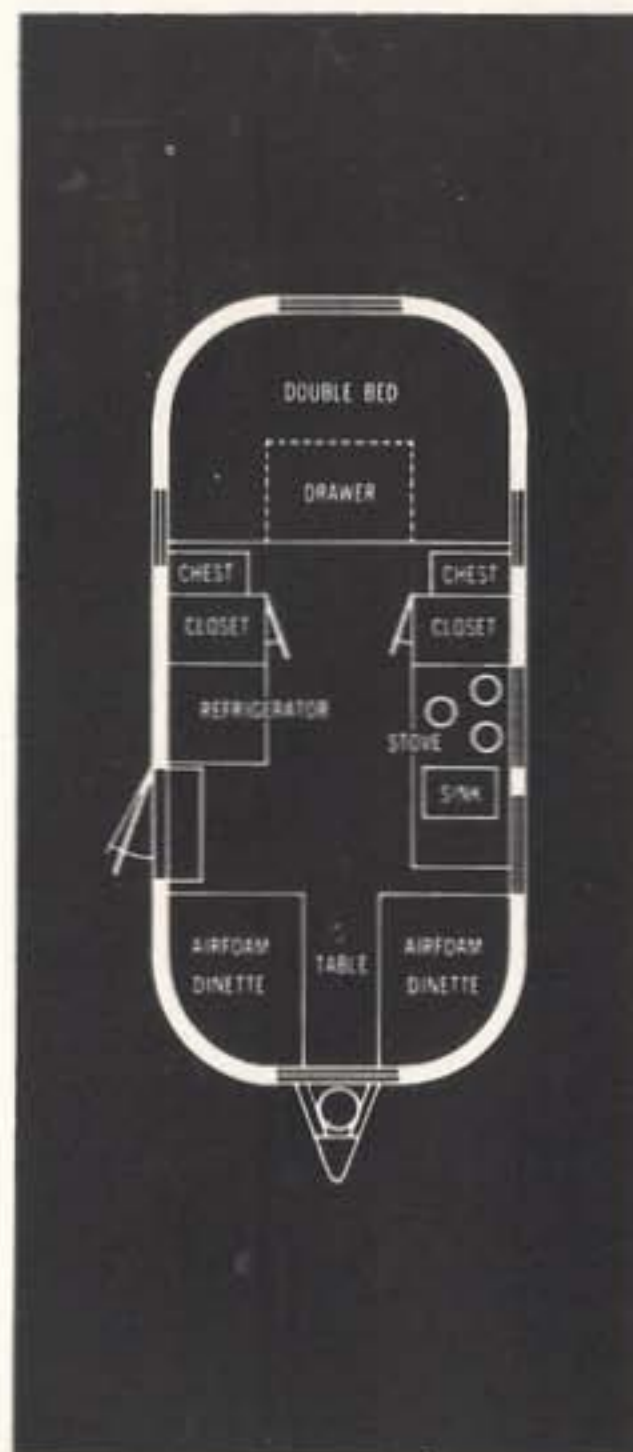
\$2660

SPECIFICATIONS

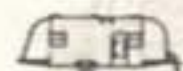
Overall length — 18 ft.
 Body length — 15 ft.
 Overall height — 8'4"
 Inside height — 6'4"
 Overall width — 7'1"
 Inside width — 6'10"
 Overall weight — 2080 lbs.
 Hitch weight — 240 lbs.

STANDARD EQUIPMENT

Double bed with airfoam mattress
 & box spring
 Built-in airfoam dinettes
 3-burner stove with oven
 White porcelain sink
 Combination electric-ice refrigerator
 Formica galley top
 Beautifully grained wood cabinets
 Vinyl linoleum
 2 closets, 8 drawers
 2 roof lockers
 Medicine cabinet
 8-ft. awning rail
 Curtains and textured draw shades
 6 opening windows, 2 roof vents
 Shock absorbers
 Steel bumper
 Trunk compartment
 Electric brakes
 Truck wheels
 700-15 6-ply tires
 Escape-type rear window



Airstream — the most wanted travel trailer on the road today

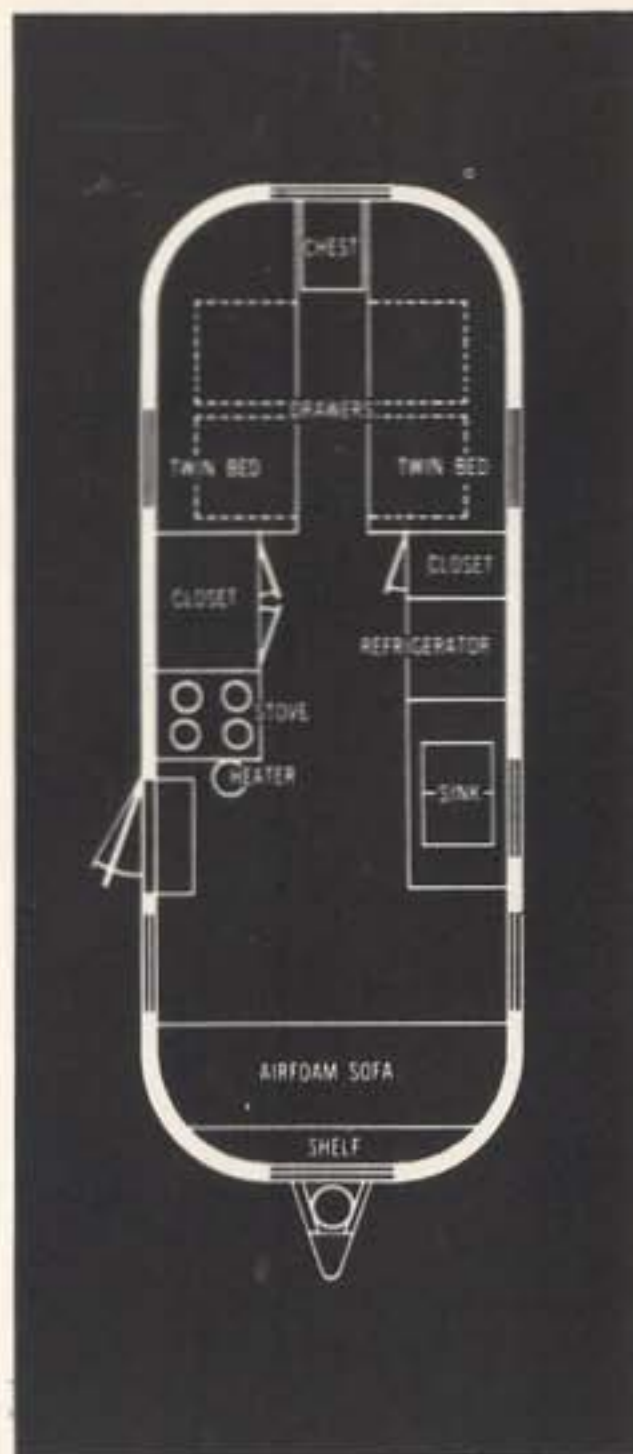


Standard Over 200 models to choose from. See listing
 On back and front of this book for details.



22-FOOT AIRSTREAM FLYING CLOUD

The Flying Cloud is a true descendant of the very first Airstream built in 1931. It has the same all-aluminum, anodized, all-riveted, welded construction, but with many improvements incorporated from years of hard testing. This Flying Cloud has with millions of miles of air travel behind it is the last word in design, travel and a genuine "Flyin' Machine on Wheels." It is spacious enough for comfort, but still compact and lightweight. It pulls like a feather behind your car. Our latest slogan "We travel vertically all the hills in high." Doubtless you will get up to it and after your springs seldom used. Big windows, front and aft make it a real "Flyin' Machine" while traveling.

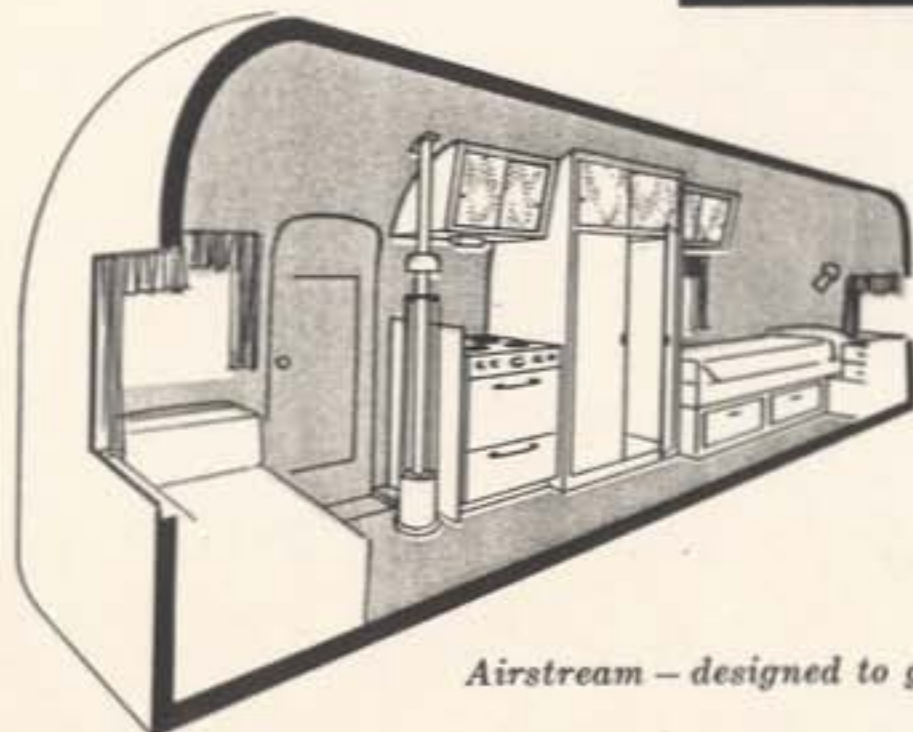


SPECIFICATIONS

Overall length – 22 ft.
 Body length – 19 ft.
 Overall height – 8' 4"
 Inside height – 6' 4"
 Overall width – 7' 1"
 Inside width – 6' 10"
 Overall weight – 2580 lbs.
 Hitch weight – 250 lbs.

STANDARD EQUIPMENT

Double or twin beds, airfoam mattresses and box springs
 Airfoam sofa in front, convertible single, double bed
 Apartment size stove
 Double sink
 Combination electric-ice refrigerator
 Vinyl linoleum
 Beautifully grained wood cabinets
 3 closets, 11 drawers, 5 roof lockers
 Medicine cabinet
 Porch light
 Oil or butane heat
 7 opening windows
 3 roof vents
 8" power fan over stove
 12-ft. awning rail
 Curtains and textured draw shades
 Butane tank
 Trunk compartment
 Shock absorbers
 Steel bumpers
 Electric brakes
 Truck wheels
 700-15 6-ply tires
 Escape-type rear window



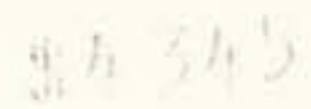
Airstream – designed to go places with the greatest of ease

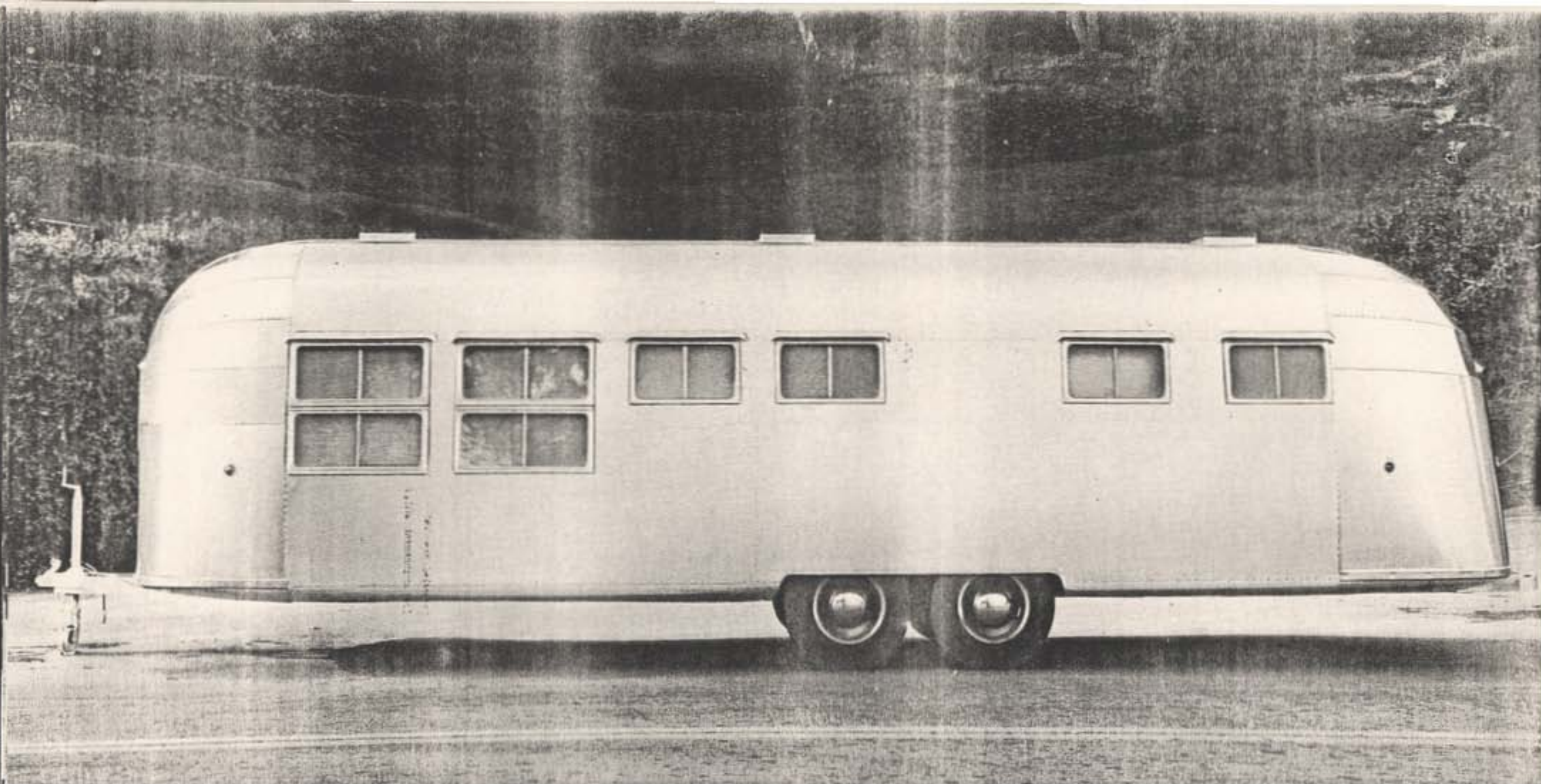




26-FOOT AIRSTREAM CRUISER

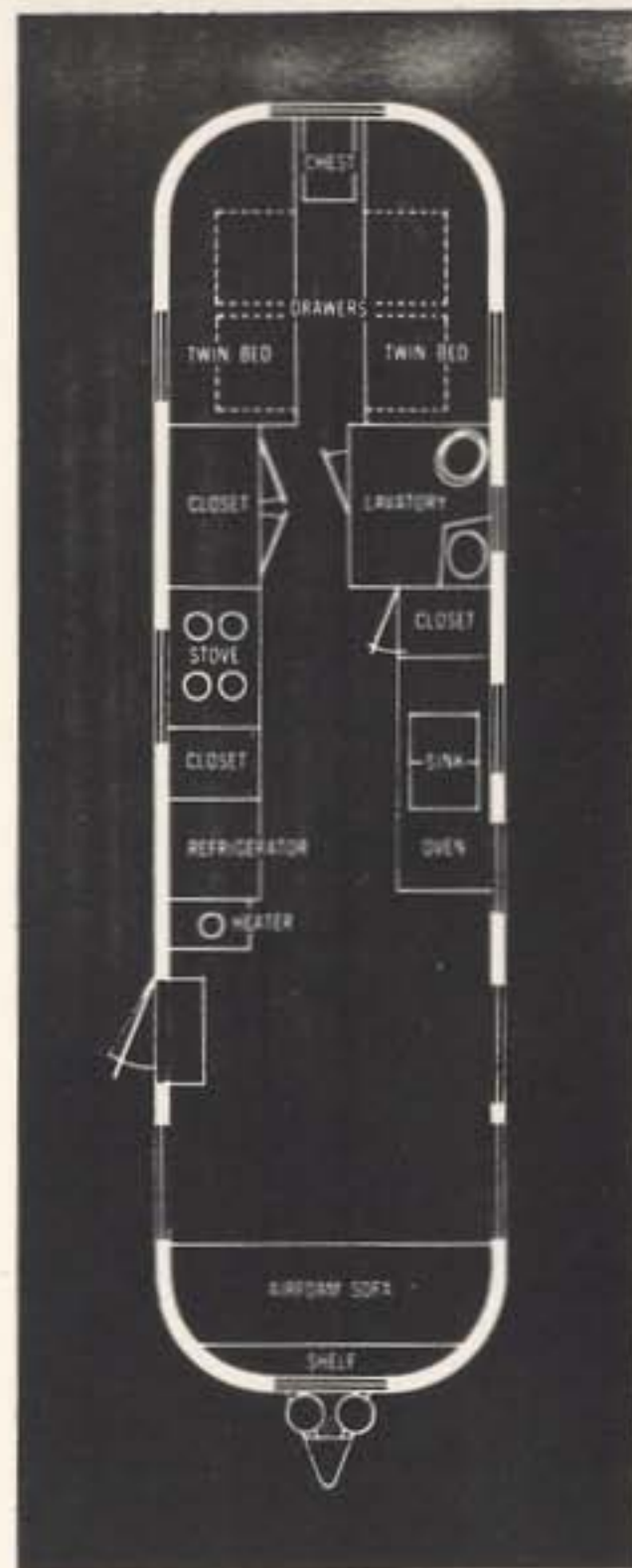
The Cruiser model was designed specifically for those people who travel over extended periods of time. It is a genuine Airstream—lightweight but large with plenty of room for graceful living. So comfortable and roomy, in fact, this trailer completely equips you and ready for the road weighs a little over 3000 pounds, less than most of today's trailers. It's a natural for those who want to travel with their cake and eat it too—in the space of a big trailer and the easy towability of an Airstream. With the Cruiser you can take all the comforts of home with you wherever you go.





30-FOOT AIRSTREAM LINER

Here is the lightest trailer of its size in the world. It's a big roomy high level tandem, easily towed by any passenger car. How often can you get a trailer with so much livability, yet so simple to tow with little effort. Live in it or use it as a deluxe in the Airstream trailer. It has an abundance of space and conveniences to make it outstandingly comfortable and enjoyable. All the genius of Airstream design and the experience of extensive travel testing have gone into the building of this great model. Wherever you stay, you will enjoy living in it. And wherever you go, you will enjoy taking it with you.



SPECIFICATIONS

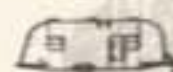
Overall length — 30 ft.
 Body length — 27 ft.
 Overall height — 8' 4"
 Inside height — 6' 4"
 Overall width — 7' 1"
 Inside width — 6' 10"
 Overall weight — 4050 lbs.
 Hitch weight — 320 lbs.

STANDARD EQUIPMENT

Double or twin beds, airfoam mattresses and box springs
 Sofa in front, convertible single, double bed
 Hot water heater
 Shower and toilet
 Oil or butane heat
 Built-in de luxe oven and broiler with separate 4-burner stove top
 Double sinks
 Combination electric-ice refrigerator
 Formica galley top
 Beautifully grained wood cabinets
 Vinyl linoleum
 5 closets, 16 drawers, 5 roof lockers
 Medicine cabinet
 11 large windows, 3 roof vents
 Curtains and draw shades
 8" power fan over stove
 Double butane tanks
 Weatherproof electric outlet
 20-ft. awning rail
 Porch light
 Trunk compartment
 Steel bumpers
 Shock absorbers
 Electric brakes
 Tandem truck wheels
 700-15 6-ply tires
 Escape-type rear window

Separated over and burner
 Top arrangement discontinued

Airstream — since 1932 the world's finest lightweight travel trailers



Standard floor heating system (not shown)
 On standard floor — standard floor heating

Prices and specifications subject to change without notice.

AIRSTREAM AND YOU

Trailers are more house than automobile. No one style or size of house will fit the needs of all people. The same goes for trailers. It depends entirely on what your habits are, how you live, where you want to go, how many there are of you, and what you want to use your trailer for. No one standard model could possibly cover all these needs.

So the important thing is, what do you like and what do you want. We specialize in building trailers for individualists, and in tailoring each trailer to the needs of the individual who is buying it. That is one of the main reasons why Airstream owners are so well satisfied. The photographs and floor plans shown in this booklet are merely those of our most popular models. The length and size of our shells are pretty much standard, but it is in the interior equipment that you should tell us what you want.

The first thing that controls the size of trailer for you is sleeping accommodations. Beds must be comfortable, and the kind you are used to. Thus, you should decide whether you want twin beds, a double bed, a walk-around bed, a cross bed or bunk beds. Usually we maintain that no trailer is large enough for more than two people. However, there are families with children and there are times when guests must be provided for.

The next controlling factor is cooking. Usually our standard stove is a four-burner with oven and broiler, operating from butane gas. Another popular model is a three-burner gas stove with oven. This model can be placed on top of a wheel-house and takes up much less room.

The third factor as regards space depends pretty much on the amount of possessions you want to take with you. If you are living in a trailer more or less permanently, then you need more storage space than if you are taking only a week-end trip or a vacation of several months' duration. Airstream always specializes in giving large closets, closets and plenty of drawer space.

Refrigeration can be of three kinds—either electric, ice or gas. The most popular, of course, is the combination electric and ice refrigerator. Usually it is a

matter of compromise on about a 4 or 6 ft. box. There are two types of gas refrigerators. The Servel 6 ft. which weighs about 200 pounds and the Astrel 2 cubic ft. which weighs about 65 pounds. Both are very good. We are presently importing a Silo refrigerator from Germany, which is not as large as the Marvel but much larger than the Astral. It operates from butane gas or kerosene.

For lights there are electric lights running from house current, 6 volt lights running from automobile battery current, gas lights, and oil lamps. Most trailers are built to use house current. Oil lamps are very practical. Coleman gasoline lanterns are the old standby. We are now importing gas lights from England that operate exceptionally well, using a small amount of gas and giving an excellent light. The mantles are very durable.

Regarding water, we usually have a faucet which can be attached to a hose from the regular water supply. But we also install water tanks with pumps. Common practice is to have the usual faucet, but with an extra tank and pump installed when there is no water supply available. For hot water, we install an electric hot water heater. We are also installing butane gas water heaters in several types and sizes.

In any instance the thing to remember is that we are not only expert trailer manufacturers. We are also expert trailer travelers. We have been conducting trailer caravans for the last four years to Mexico, most of the countries of Central America and most of the countries of Europe. We travel in trailers fully 50 per cent of the time. We don't think anyone in the world knows any more about travel trailers from actual experience than we do. Moreover, we make a specialty and a hobby of making trailer living and traveling comfortable and enjoyable. We are continually endeavoring to devise new means, new ways of solving the old problems. We have just recently established a method of operating fluorescent lights from a six volt battery. This makes a wonderful light and is very efficient—So the thing to do is tell us your problem, and what you want. We usually can tell you several ways of going about it.



AIRSTREAM—A SOUND INVESTMENT

LOW UPKEEP

The exterior skin is genuine Alclad aluminum, the same as used on trans-Atlantic transports and fighter planes. It is as weather-proof as anything can be. It never requires paint. It can be polished with the usual non-scratching auto car polish. The body is all riveted. There are no nails or wood screws to rust. There is no wood in the structure or on the floor. The metal body expands and contracts with the heat and cold in one piece and is built to be so sturdily constructed that it is not easily damaged but is inexpensive to repair and usually costs much less than the labor work on an automobile. The first Airstreams, now twenty years old, are still in good shape and look just as bright as when they were new as the day they left the factory.

SEVENTH EYE

The front and back of Airstreams are equipped with a height so that you can see right through the trailer either by looking out through your car's rear window or through the front view mirror. This adds tremendously to the safety factor and avoids nervousness in towing. It makes backing easy.

WEATHER-PROOF

When glass insulation is used and the entire body enclosed in aluminum insulation, it's a warm blanket in winter and prevents heat penetration in the summer. The floor is exceptionally well insulated. Other factors that contribute to a comfortable and comfortable temperature regardless of all kinds of weather are excellent ventilation, a shiny exterior which bounces heat and the ever-lasting, oil-burning hydraulic system.

STREAMLINED

Airstreams are as modern as today's fastest and newest airplanes, advancing with the times since 1932. Some Airstream owners report that they get more mileage with their Airstream than when they are towing an Airstream than they do with their car alone when they are towing it at high speeds. They slip through the wind and the metal eddy currents that catch the back of most trailers. When passing, they cut out a very heavy wind and a very heavy rain to be blown away.

EXCEPTIONALLY EASY TOWING

Because they are built like an airplane and are so perfectly balanced with a low center of gravity and a minimum turning inertia, towing an Airstream is like a dream. If you want to tow your streamlined high speed motor home they are balanced so well that they are a little wavy on the hitch and they never have overload or hydraulic shock or hydraulic shock. They can be towed as easily as a baby buggy and hooked and unhooked from the tow car without a man, a woman or child can do it.

HIGH RESALE VALUE

Because there is no "warrant" to an Airstream and because the exterior as well as the interior is so well sign, or wear are not noticeable. There is never any odor even after years of use. They can be easily cleaned and polished inside and out. Thus, Airstreams, even the old ones, have a high resale value. You can buy a few of them on the used trailer lots but when you do, you will find them commanding high prices.

Airstream—where you'll find the world's finest lightest trailer

