



# Eddie Bauer Airstream

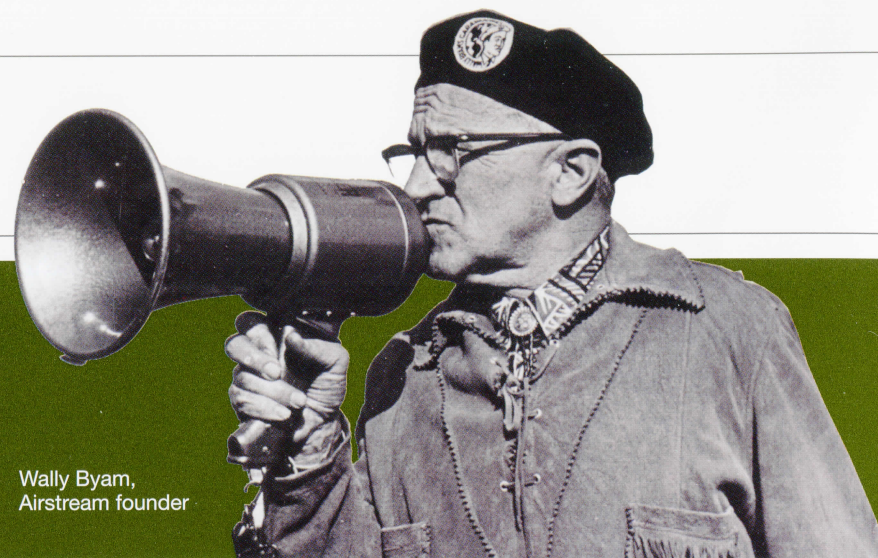
The ultimate outdoor adventure experience.





adventure, inspired by  
**AIRSTREAM**

## Two American icons. One unforgettable way to explore.

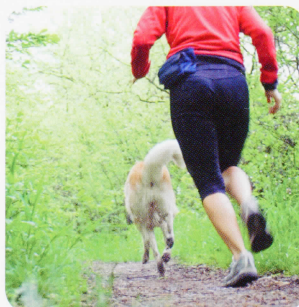


Wally Byam,  
Airstream founder

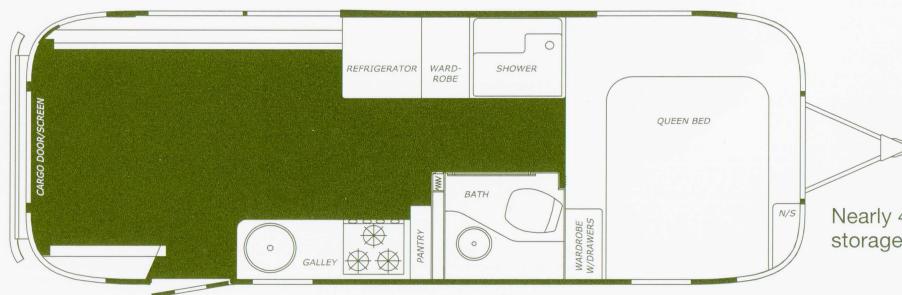
**With over 160 years of combined experience bringing quality products to generations of outdoor enthusiasts, Eddie Bauer and Airstream are two iconic brands steeped in the American traditions of innovation and adventure.**

The legacies of both companies come to life through the stories of their founders – two legendary men, each with a bold vision and a passion for the out-of-doors. Accomplished Seattle outdoorsman Eddie Bauer opened his first sport shop in 1920 and quickly earned a reputation as a premier outfitter and innovator. In 1931, pioneer manufacturer Wally Byam designed and built the original Airstream trailer. Byam's insightful invention led to the rise of an exciting, new lifestyle of adventure travel – a lifestyle that is still enjoyed by thousands today. Considering their shared heritage and passions, it seemed only natural when the two companies recently came together to collaborate on the first-ever Eddie Bauer Airstream.

By combining the best of both brands, the Eddie Bauer Airstream is ready to rekindle America's spirit of adventure. We think Wally and Eddie would approve.







Nearly 400 cu. ft.  
storage configuration



## More space – for more gear.

With nearly **400 cubic feet of interior storage**, the Eddie Bauer Airstream gives you enough space to stow all your gear – including oversized equipment like bikes, kayaks, tackle boxes and more. Interior modular furnishings fold away to give you more space where you need it. Sturdy tie-downs along the interior perimeter help keep everything secure and in place.

## Loading and unloading has never been easier.

Our roomy rear hatch (48" w x 57" h) makes loading and unloading a snap. Then, when you're ready to make camp, pop the hatch and bring the outdoors in.



## Four-footed friends welcome.

Traveling in the Eddie Bauer Airstream means never having to leave your best buddies behind. Pet-friendly features are standard – so dogs are always welcome.

- Extra-durable, stain-resistant Sunbrella™ upholstery helps this Airstream interior stand up to whatever your dogs dish out.
- Sturdy exterior tie-downs keep Rover from roving too far.
- A heavy-duty entry door guard keeps pets safely inside; protects screen door from scratching.
- A convenient hand-held outdoor shower is perfect for hosing off muddy paws.





### Good looks inspire great adventure.

Because you like to travel tastefully we made sure the Eddie Bauer Airstream covered every detail, right down to the stitching. For example:

- We included broad panoramic windows and a sport hatch with a roll-away screen to bring the outdoors "indoors."
- We offer quality finishes in maple and soapstone laminates, fine quilted fabrics with contrast-piping, "Fossil Leaf-pattern" roof locker doors, and a "Fern Green" Sunbrella™ awning to capture the essence of the Eddie Bauer brand.
- Eddie Bauer Signature goose down pillows, comforter and packable throw are all included so you'll always be traveling in comfort and style.
- Every new Eddie Bauer Airstream comes with two co-branded daypacks and a duffel bag for effortless pack-and-go.







Eddie Bauer,  
circa 1920

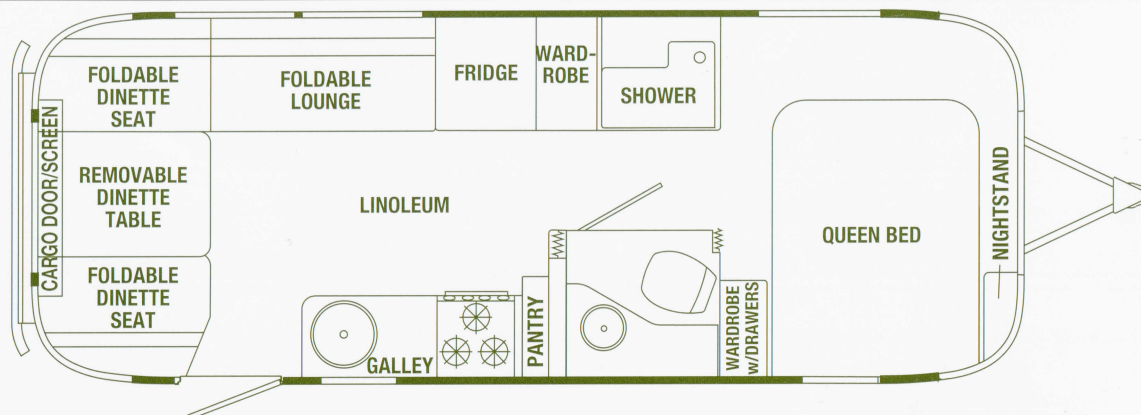
### Functional Highlights for the Outdoor Adventurer

- A wide rear sport hatch accommodates oversized gear like kayaks, bicycles and fishing tackle for more effortless loading and unloading
- A roll-away screen on the sport hatch keeps out pesky insects while letting the fresh air in
- A non-slip Aquatrac™ bumper perch also helps make loading and unloading easier
- Modular dinette/lounge furnishings fold away to increase your storage capacity (nearly 400 cu. ft.)
- Perimeter interior tie-downs secure stored gear
- Premium Michelin™ tires and 16" wheels provide greater ground clearance
- Rugged wheel-well cladding for added protection from off-road debris
- Sunbrella™ fabrics in the dinette/lounge area offer added durability and stain-resistance
- A retractable clothesline in the bath plus extra racks in the bedroom for hanging wet clothing
- A hand-held outdoor shower for showering, rinsing equipment, or even washing the dog
- Heavy-duty exterior hooks for locking equipment or for keeping the dog in check





# Eddie Bauer Airstream



|   |         |
|---|---------|
| Exterior Length   | 25' 11" |
| Width Exterior  | 8' 5.5" |
| Width Interior  | 8' 1"   |
| Height Exterior w/A/C   | 9' 7"   |
| Height Interior w/A/C   | 6' 5"   |
| Hitch Ball Height   | 18.25"  |
| Hitch Weight (w/LP and w/o options, water and cargo) (lbs.)     | 833     |
| Unit Base Weight (w/LP and w/o options, water and cargo) (lbs.) | 5,729   |
| Gross Vehicle Weight Rating                                     | 7,300   |
| Net Carrying Capacity (NCC=GVR-UBW) (lbs.)                      | 1,571   |

|  |        |
|--|--------|
| Fresh Water Tank w/drain valve (gal.)        | 39     |
| Black Water Tank (gal.)                      | 39     |
| Gray Water Tank (gal.)                       | 37     |
| Water Heater w/electronic ignition (gal.)    | 6      |
| A/C w/heat pump and electronic control (BTU) | 13,500 |
| Furnace w/electronic ignition (BTU)          | 25,000 |
| LPG (2 steel tanks) (lbs.)                   | 60     |
| Deep Cycle Battery (lead acid) Group 24      | 2      |
| Sleeping Capacity                            | 2-4    |



**THOR**  
INDUSTRIES, INC.

All content and images  
© Airstream 2011

EB10K 01/11

Airstream, Inc.  
419 West Pike Street  
P.O. Box 629  
Jackson Center, OH  
45334 USA  
937-596-6111  
[www.airstream.com](http://www.airstream.com)

Product information, specifications, and photography in this brochure were as accurate as possible at time of printing. Photographs may contain some features that are optional on your vehicle. Since we continually strive to improve our products, actual products may differ. Prices and specifications are subject to change without notice. All capacities are approximate and dimensions are nominal. Some features or options may be different or unavailable in Canada.

Vehicle Loading – Every effort has been made to provide the greatest number of options for the recreation vehicle owner. Along with these choices comes the responsibility to manage the loads that are imposed by the choices so that they remain within the manufacturer's specified chassis weight limits. Do not overload the recreation vehicle.

Dry Weights – Based on standard features; optional equipment not included. Net carrying capacity (NCC) determined by subtracting unloaded vehicle weight (UVW) from gross vehicle weight (GVWR) and includes fluids, options, and cargo. Liquid capacities and weights are approximations only.

Warning – This information is intended as a guide only. Weights of individual vehicles may vary. Consult your owner's manual for complete loading, weighing, and towing instructions.