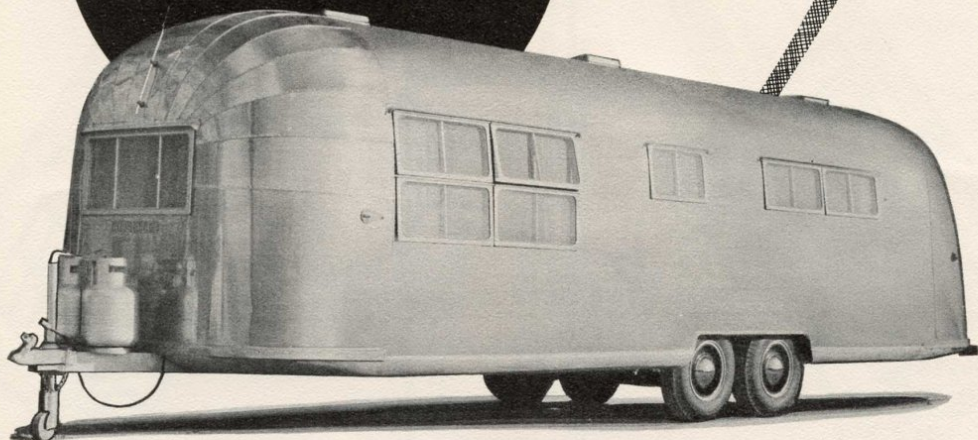


\$5145

30-foot

**NEW Features!  
NEW Styling!  
NEW Comfort!**



## '55 AIRSTREAM COMMODORE VANDERBILT

• The ultimate in fine Airstream trailers. Newly designed for liveable comfort beyond your fondest dreams. The lightest and easiest towing trailer in the world, just loaded with star studded features.

★ Large trailer comfort ★ Small trailer mobility ★ New rectangular (no curved ends) airfoam twin beds in new bedroom location ★ New roomier bathroom located in rear has shower, tub, large lavatory and conveniently located toilet ★ Sliding doors which cut off bedroom from kitchen and bathroom providing excellent privacy ★ More roof locker space ★ Largest galley ever in an Airstream ★ Convenient eye-level off floor refrigerator with freezer ★ Surprisingly spacious living room ★ Perfect cross ventilation throughout ★ Provision for television installation ★ Easy to see through trailer while traveling.

• Here is THE dream combination of surprising spaciousness, liveable comfort, light weight and easy towing. All of these and more are in Airstream's finest cruiser, the Commodore Vanderbilt.

**Travel Tested Over The Highways Of The World!**

**WORLD'S  
FINEST  
LIGHTWEIGHT  
TRAVEL  
TRAILERS**

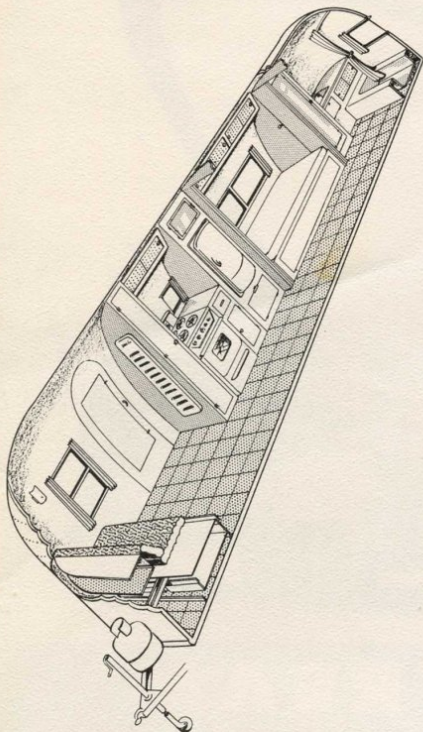


**AIRSTREAM**  
TRAILERS, INC.

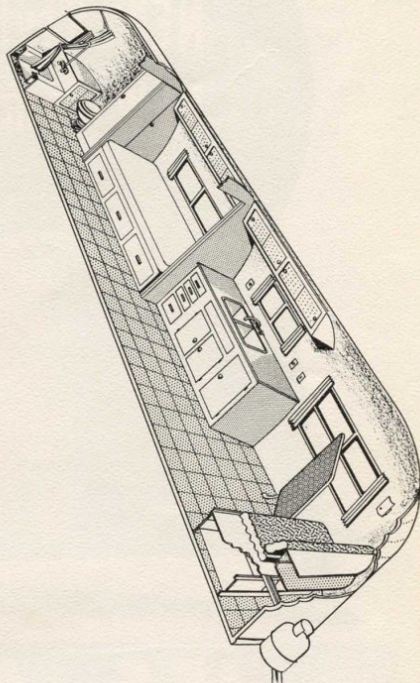
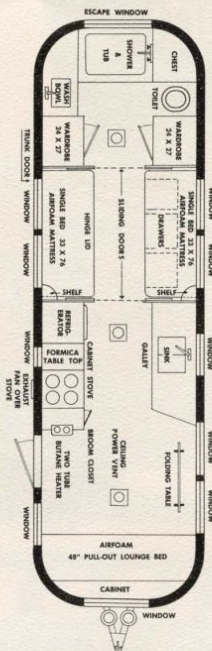
108 CHURCH STREET  
JACKSON CENTER, OHIO

*New... Different... Ultra Modern...*

**INTERIOR ARRANGEMENTS**



**30-foot**



*Airstream's New...* **COMMODORE VANDERBILT**  
**✓ CHECK THESE FEATURES!**

Overall length — 30 ft.  
 Body length — 27 ft.  
 Overall weight — 3,989 lbs.  
 Hitch weight — 340 lbs.  
 Rectangular twin beds.  
 Featherlite lifetime airfoam mattresses.  
 Airfoam sofa in front, convertible to single, double bed.  
 Hot water heater.  
 Rear bathroom, toilet, lavatory, shower and tub.  
 Oil or butane heat.  
 Deluxe apartment range, 4 burner, oven and broiler.  
 Double sinks, swing faucet.

Combination 5.6 cu. ft. ice-electric refrigerator with freezer.  
 Formica galley tops.  
 Airliner curtains.  
 Beautifully grained wood cabinets.  
 Linoleum tiled floor.  
 54" wardrobe space, 13 drawers, 7 roof lockers.  
 Medicine cabinet.  
 14 crank operated windows.  
 Perfect cross ventilation.  
 8" power fan for stove, 3 roof vents.  
 Porch light, 20 ft. awning rail.  
 Power fan in center ventilator.  
 Double butane tanks.

Weatherproof 110-Volt electrical outlet.  
 Trunk compartment.  
 Touch control, built-in step.  
 Built-in radio antenna mast.  
 Warp-free hollow core cabinet doors.  
 Sky-lite ventilator in living room area.  
 Imported "Sta-closed" closet catches.  
 Tough Sil-Lustre wax body finish.  
 Doors hinged on forward edge for added safety.  
 4-wheel electric brakes.  
 Escape type rear window.  
 Steel bumpers, Shock absorbers.  
 Tandem truck wheels, 700 x 15, 8 ply tires.

*As Modern As Tomorrow! • Built To Outlast Them All!*