

Globetrotter

2020  GLOBETROTTER



 **AIRSTREAM**

About **AIRSTREAM**[®]

Exacting craftsmanship. Uncompromising attention to detail. Limitless inspiration for adventure.

There is no denying that Airstream is the world's most iconic travel trailer for a reason. Durable, reliable, and built upon nearly 90 years of innovation, Airstream travel trailers helped write the American travel story. We've crisscrossed the globe, parked at the foot of the Pyramids, explored the National Parks, and camped for the weekend down the road.

Proudly built by hand in Jackson Center, Ohio, USA by hundreds of talented craftspeople, each Airstream travel trailer takes approximately 350 hours to build. Form and function are tightly woven into every thoughtfully-planned inch, and every design is carefully considered. The result is a travel trailer that will last a lifetime – or more.

While we manufacture every Airstream from the wheels up, we like to say that we don't actually build travel trailers. Instead, we build someone's retirement, their well-deserved vacation, or their retreat from a hectic day.

In other words: Airstream builds dreams come true.



[Learn how Airstreams are built to last.](#)



See more Globetrotter photos online. [↗](#)

About Globetrotter

European inspired and American made, Globetrotter is a modern celebration of minimalist design. Its crisp, clean lines and delicate neutral colors make it a sophisticated beauty while softer curves, panoramic windows, wrap-around upholstery, recessed speakers, and backlighting throughout make it a modern traveler's dream. From wine tastings to art festivals to cross country treks, the Globetrotter Travel Trailer will turn heads and hearts young and old.

1 Bathroom

The Globetrotter offers two bathroom options: A split bathroom with a shower along one side and a private toilet area with a sink across the hall, or a three-piece bathroom all behind one door.

2 Franke® Galley Faucet

Sleek Franke faucet brings the modern design and convenience you love at home along for the journey.



3 Space for Everything

Clutter stays out of sight with the slide-out pantries and closet that add plenty of storage.

4 Expansive Galley

Preparing meals will be a breeze in the Globetrotter's spacious galley where you will find modern appliances and fixtures you would expect in a residential kitchen.

5 Under-bed Storage

Make your trip last longer in the Globetrotter with extra under-bed storage. There is ample room for that inevitable additional bag.

6 Convenient Charging

USB ports and 110V outlets are smartly located inside the Globetrotter, ensuring that whether you're checking the local weather to plan the day or enjoying a book on a tablet, power is never far from reach.

7 Three-burner Gas Stove

The upscale, residential-style stove with glass top creates space for preparation of gourmet meals for friends and family.

8 Premium Appliances

A Baraldi cooking vent, a microwave, and a stainless steel sink with DuPont™ Corian® cover make cooking not just easy, but enjoyable.





HOME AWAY FROM HOME

CUSTOM CURVED CABINET DOORS

A major part of the Globetrotter Travel Trailer's appeal is how seamless the storage feels. Upper storage cabinets throughout the travel trailer are finished with our custom curved wood doors, coated in a bright white that's resistant to fingerprints. Inside are hydraulic hinges that keep the doors in place when they're fully open and add a soft close when they shut.

LESS WORK. MORE FUN.

Simple set-up starts your trip out right and gets you going in the right direction – doing less work and focusing on fun. Spend less time setting up a campsite and more time enjoying it with standard power awning and power stabilizer jacks. Both extend and retract with the push of a button.

1 HITCH™ Seating Upholstery

The Globetrotter is the only Airstream travel trailer to feature award-winning HITCH fabric for its seating upholstery. HITCH features a fine woven texture, subtle metallic tip print, and a distinctive two-tone feel. It's also incredibly durable and stain-resistant.

2 Ultra-modern Kitchen

The galley features a three-burner stove with a glass cover, a Baraldi vent, an oven, a refrigerator with a freezer, and a microwave.

3 Modern Conveniences

The deep stainless steel Moen® sink complements the European modern Franke faucet.

4 Ample Storage

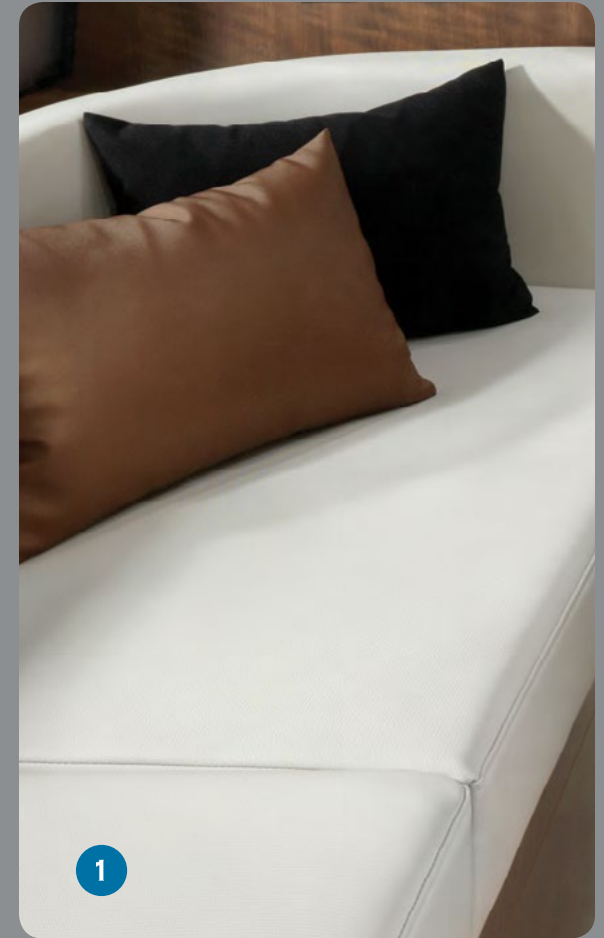
A deep closet gives you plenty of space to hang outfits, while even more storage hides under the bed.

5 Fusion Factory-tuned Stereo

Stream from your devices using Bluetooth® or listen to satellite or AM/FM radio. The sound system is built into the cabinets and projects throughout the travel trailer.

6 Dinette

When positioned as a table and seating, the dinette has plenty of room for four people to comfortably eat and socialize. It can be converted to a lounge or sofa as well as a bed for additional seating options.





HANDCRAFTED IN THE USA

Airstream travel trailers aren't built the fastest way. Not the easiest, either. That's because they're built with an obsessive attention to detail, and a willingness to choose the processes and material that make the absolute best product – even if it's a little harder, takes a little longer, and costs a little more.

Every single Airstream travel trailer is carefully crafted by hand at our headquarters in Jackson Center, Ohio. And each one takes an average

of 350 hours to complete – compared to about 50 hours for the typical RV. Why? Because we build our travel trailers to last not just a lifetime, but for generations to come. That's why they easily outpace the average RV lifespan of 15 years, and why 75% of the Airstreams we've built since 1931 are still on the road today.

That's the kind of quality that makes Airstreams last for generations, and the kind of quality product we're proud to put our name on.

1 Rear-view Monitoring
A rear-view camera is mounted to the back of the travel trailer to make reversing and parking so much easier.

2 Pre-wired for Solar
Seamlessly add solar panels and monitor them inside the travel trailer.

3 Climate Control
Equipped with efficient, Quietstream™ AC system (second unit optional) with a heat pump and an electronic thermostat, plus a gas furnace and onboard water heater.

4 Dual Axle
Globetrotter has two axles, and is built for ease of towing.

5 Zip Dee® Awning with Sunbrella® Fabric
Upgraded pinstripe front power awning provides shaded outdoor space, and the Zip Dee® matching window awnings keep the interior cool and private.

6 Power Stabilizer Jacks
Powered leveling and stabilization make it faster, easier and simpler to get up and running at the campsite.

7 Exterior Low Pressure Gas Grill Connection
Our low pressure grill connection is made specifically for ease of use with compatible Airstream Weber® Grill.

8 Panoramic Windows
Front panoramic windows are protected by three rock guard pieces. Each is built to swing away from windows for easy cleaning.

9 Front Stone Guards
Stainless steel stone guards mounted on the front of the travel trailer protect the lower segments from road debris.



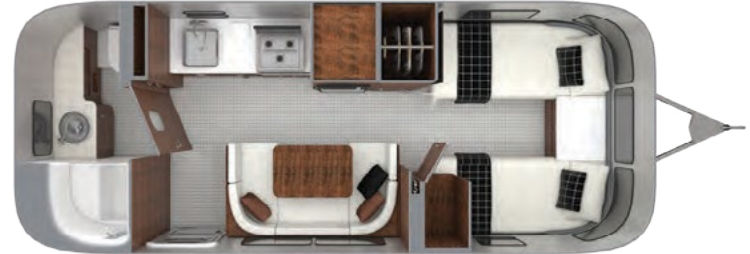
Take a look at Globetrotter's features online. 



DARK WALNUT Copenhagen Cream



23FB



23FB Twin



25FB



25FB Twin



27FB



27FB Twin

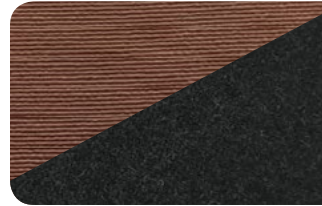
Choose your perfect floor plan online. [▶](#)



**Seating & Bed
Headboard**



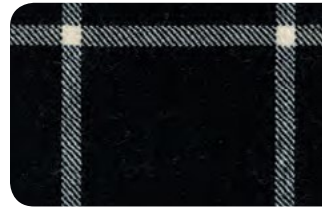
**Seating
Accents**



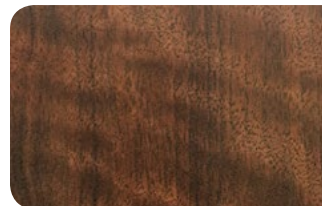
**Bedroom Sham
& Comforter**



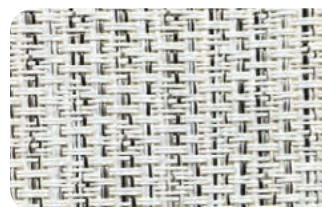
**Bedroom
Accent**




**Cabinetry
& Walls**



Flooring



 [Explore Globetrotter's design on our website.](#)



NATURAL ELM Barcelona Blue



23FB



23FB Twin



25FB



25FB Twin



27FB

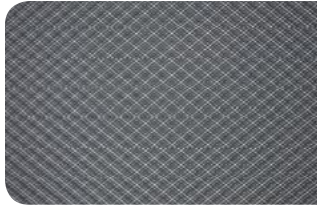


27FB Twin

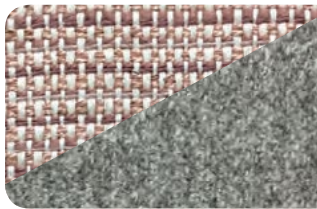
Choose your perfect floor plan online. [▶](#)



**Seating & Bed
Headboard**



**Seating
Accents**



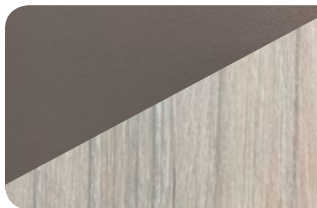
**Bedroom Sham
& Comforter**



**Bedroom
Accent**



**Cabinetry
& Galley Walls**



Flooring



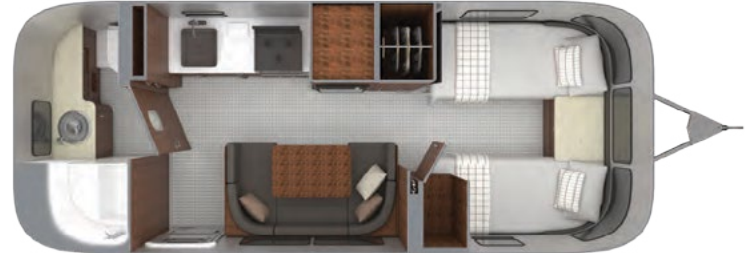
[Explore Globetrotter's design on our website.](#)



DARK WALNUT Dublin Slate



23FB



23FB Twin



25FB



25FB Twin



27FB

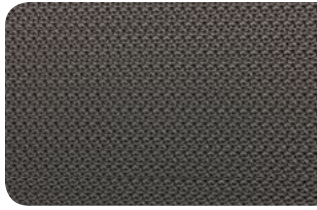


27FB Twin

Choose your perfect floor plan online. [▶](#)



**Seating & Bed
Headboard**



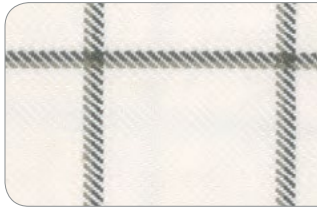
**Seating
Accents**



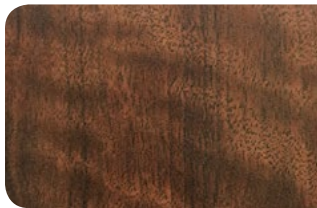
**Bedroom Sham
& Comforter**



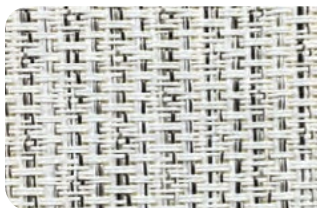
**Bedroom
Accent**




**Cabinetry
& Walls**



Flooring



 [Explore Globetrotter's design on our website.](#)



NATURAL ELM London Grey



23FB



23FB Twin



25FB



25FB Twin



27FB

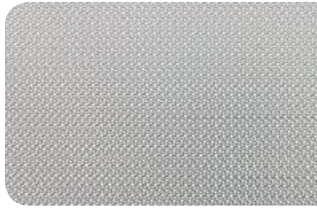


27FB Twin

Choose your perfect floor plan online. [▶](#)



**Seating & Bed
Headboard**



**Seating
Accents**



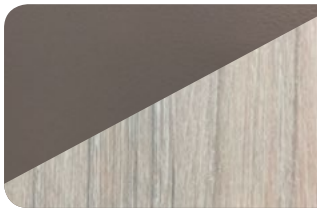
**Bedroom Sham
& Comforter**



**Bedroom
Accent**



**Cabinetry
& Galley Walls**



Flooring



[Explore Globetrotter's design on our website.](#)

Globetrotter Specifications

Globetrotter Specifications	23FB	25FB	27FB
Exterior Length	23 ft. 9 in.	25 ft. 11 in.	28 ft.
Exterior Width	8 ft.	8 ft. 5.5 in.	8 ft. 5.5 in.
Interior Width	7 ft. 7 in.	8 ft. 1 in.	8 ft. 1 in.
Exterior Height with A/C	9 ft. 9 in.	9 ft. 9 in.	9 ft. 9 in.
Interior Height with A/C	6 ft. 7.5 in.	6 ft. 7.5 in.	6 ft. 7.5 in.
Hitch Weight (with LP & Batteries)	591	882	871
Unit Base Weight (with LP & Batteries)	5,297	6,074	6,258
Maximum Trailer Capacity (GVWR) (lbs.)	6,300	7,300	7,600
Net Carrying Capacity (lbs.)	1,003	1,226	1,342
Fresh Water Tank (gal.)	39	39	39
Gray Water Tank (gal.)	30	37	37
Black Water Tank (gal.)	18	39	39
30 AMP Service Single AC with Heat Pump (BTU)	13,500	15,000	15,000
50 AMP Service Dual AC with Heat Pump (13,500 BTU)	—	OPT	OPT
Ducted Furnace (BTU)	18,000	25,000	25,000
Refrigerator	3-way 6.7 cu. ft.	3-way 6.7 cu. ft.	3-way 6.7 cu. ft.
Oven (LP Gas)	STD	STD	STD
Microwave (*Removed with Convection Option Selected)	—	—	STD
Convection Microwave Oven (*Replaces Oven)	OPT*	OPT*	OPT*
Interior Windows & Skylights	12	17	18
Master Bed Configurations (*Replaces Queen)	Queen (60" x 75") Twin* (34" x 80")	Queen (60" x 75") Twin* (34" x 80")	Queen (60" x 75") Twin* (34" x 80")
Convertible Dinette to Additional Sleeping	38" x 76"	38" x 79"	38" x 79"
Sleeping Capacity	Up to 4	Up to 6	Up to 6

*Weight distribution hitches will reduce the stated hitch weight

Globetrotter Exterior Features

Semi-Monocoque Aluminum Superstructure	STD
Fluorocarbon Treated UV Protected Aluminum Exterior	STD
Temperature Reducing One Piece White Aluminum Roof	STD
Thermal Barrier Protection Between Interior and Exterior	STD
Handcrafted Welded Extruded Aluminum Window Frames	STD
Tempered Tinted Windows with Double Cam Latching System	STD
Powered ZipDee® Patio Awning with Sunbrella Fabric	STD
ZipDee® Rear & Roadside Window Awning with Sunbrella Fabric	STD
LED Dimmable Patio Awning Light	STD
Polished Bumper with Storage	STD
LP (2 – 30 lb. Steel Tanks) with auto 2-stage regulator	STD
Aluminum Removable LP Cover	STD
2 Deep Cycle Batteries Group 24 with Multi-Stage Converter	STD
Exterior LP Low Pressure Gas Grill Connection	STD
Solar Front Window Protection	STD
Stainless Steel Front Stone Guard Protection	STD
Exterior Shower with Hot & Cold Water	STD
Lockable Fresh Water Tank Inlet	STD
City Water Inlet with Water Pressure Regulator	STD
Black Tank Flush System	STD
Hand Painted Chassis	STD
Torsion Axle Suspension	STD
Shock Absorber	STD
Powered Hitch Jack with Light	STD

Take a look at Globetrotter's features online.



Globetrotter Interior Features

4 Powered Heavy Duty Stabilizer Jacks	STD
Goodyear® Endurance ST225/75R15 Tires, Balanced	STD
Stylized Aluminum Wheels	STD
Nev-R-Lube® Sealed Bearings	STD
Nev-R-Adjust® Brakes	STD
Spare Tire – Full Size	STD
Solar Pre-wire (Rooftop & Front Access Points)	STD
180w Solar Package with Interior Monitor and AGM Batteries	OPT
Rear View Monitoring System	STD
Cable TV Hookup	STD
Satellite TV Hookup	STD
Dedicated Waste Hose Storage	STD
Custom Aluminum Handcrafted 26" Wide Entry Door with Window	STD
Aluminum Entry Door Handle	STD
Unique Front Door Key with Heavy Duty Deadbolt	STD
Cast Aluminum Door Hinges	STD
Airstream Custom Aluminum Entry Step	STD
LED Entrance Light	STD
LED Tank Service Light	STD
LED Storage Compartment Light	STD
Cast Aluminum LED Tail Lights	STD
License Plate Bracket with LED Light	STD
Enclosed Aluminum Insulated Heated Underbelly	STD

Interior Features

Complete Aluminum Interior Walls and Ceiling	STD
Quietstream™ A/C with Heat Pump & Electronic Thermostat	STD
Fantastic® Fan with Thermostat & Automatic Rain Sensor	STD
Probeless Tank Monitoring System	STD
EcoBatt™ Insulation	STD
Handcrafted Aluminum Screen Door with Guards	STD
Panoramic Front Windows with Blackout Shades	STD
Handcrafted Italian Lite-Ply Laminated Cabinetry	STD
Seamless Luxury Woven Vinyl Flooring	STD
LED Interior Lighting with Dimmer	STD
Overhead Roof Cabinets with Auto LED Lighting	STD
Electric/LP Water Heater (6 gal.; 9 gal. production)	STD
1000W Pure Sine Inverter	STD
Coat & Key Hooks	STD

Galley, Dinette & Lounge Features

Stainless Steel 3 Burner Cooktop (LP Gas) with Glass Top	STD
Baraldi Cooking Vent with Light	STD
Dupont™ Corian® Solid Surface Galley Top	STD
Multifunctional Storage Bins Behind Galley Sink with Dupont Corian® Covers	STD
Moen® Stainless Steel Sink with Dupont Corian® Sink Cover	STD
Custom Laminate Dinette Top	STD
Award Winning Spradling Hitch Lounge and Dinette Seating (Stain Resistant)	STD
Dinette Converts to a Lounge and Sleeping Accommodations	STD
Flatware Organizer	STD
Fusion Touchscreen Stereo with Wi-Fi, Apple AirPlay & Bluetooth® Connectivity, Over-the-Air Software Updates, SiriusXM, Fusion App	STD
Surround Sound and Subwoofer	STD
LG LED HD TV (Single Sharable TV in 23 model)	STD
Blu-ray™ Player	STD
Aluminum Roller Blinds	STD
Franke® Faucet	STD

Bedroom Features

Choice of Either Queen or Twin Tuft & Needle Adaptive Foam Mattress	STD
Designer Bedspread	STD
Decorative Throw Pillows	STD
Sleeping Pillows	STD
Reading LED Lights	STD
Under Bed Storage	STD
Wardrobe with Hanging Bar	STD
LG LED HD TV with Omni Directional Antenna	STD
Blackout Pleated Curtains	STD
Blackout Curtain(s)	STD

Bathroom Features


Removable Hand Held Shower Head with Shut Off	STD
Porcelain Toilet	STD
Lavy Sink	STD
Roof Vent/Fan	STD
Towel Bar/Ring	STD
Retractable Clothes Line in Shower	STD
Grohe Faucet	STD

Additional Features

Airstream Logo Entrance Mat	STD
Fire Extinguisher	STD
Emergency Manual Crank for Powered Hitch Jack	STD
LP, Smoke & Carbon Monoxide Detectors	STD
Built In Winterization Kit	STD
TRA Certified Green: Emerald Status (Highest Rating)	STD
3 Year Airstream Limited Warranty (Transferable)	STD
3 Year 24/7 Coach-Net® Roadside Assistance	STD
Internally Routed A/C Condensation Drain Line to Wheel Well	STD

Take a look at Globetrotter's features online.



Experience Globetrotter for yourself. Find your dealer. 



adventure, inspired by
 **AIRSTREAM**

419 West Pike Street
P.O. Box 629
Jackson Center, OH
45334 USA

937-596-6111
www.airstream.com

The Airstream Travel Trailer Fleet



Product information, specifications, and photography in this brochure were as accurate as possible at time of printing. Photographs may contain some features that are optional on your vehicle.

Since we continually strive to improve our products, actual products may differ. Prices and specifications are subject to change without notice. All capacities are approximate and dimensions are nominal. Some features or options may be different or unavailable in other countries.

Warning – This information is intended as a guide only. Weights of individual vehicles may vary. Consult your owner's manual for complete loading, weighing, and towing instructions. Do not overload the travel trailer.

AIRSTREAM® and all related model names, slogans, logos, trade dress, and trademarks are owned or used under license by Airstream, Inc.

All content and images
© Airstream 2019

MKT-000011