

*Bambi.*



 **AIRSTREAM**

# About **AIRSTREAM®**

Exacting craftsmanship. Uncompromising attention to detail. Limitless inspiration for adventure.

There is no denying that Airstream is the world's most iconic travel trailer for a reason. Durable, reliable, and built upon over 90 years of innovation, Airstream travel trailers helped write the American travel story. We've crisscrossed the globe, parked at the foot of the Pyramids, explored the National Parks, and camped for the weekend down the road.

Proudly built by hand in Jackson Center, Ohio, USA by hundreds of talented craftspeople, each Airstream travel trailer takes approximately 350 hours to build. Form and function are tightly woven into every thoughtfully-planned inch, and every design is carefully considered. The result is a travel trailer that will last a lifetime – or more.

While we manufacture every Airstream from the wheels up, we like to say that we don't actually build travel trailers. Instead, we build someone's retirement, their well-deserved vacation, or their retreat from a hectic day.

In other words: Airstream builds dreams come true.









# About Bambi

All the essentials for fun excursions wrapped in a compact package. That's the new Bambi. A name that's been around affectionately for generations. Perfect for Airstream enthusiasts longing for a taste of life on the road, this lightweight, easy-to-manuever travel trailer is packed with everything needed to make the next getaway unforgettable. From the galley kitchen filled with appliances, to the dinette that transforms into extra sleeping space, Bambi gives owners everything they need – proof that great things really do come in small packages.

## 1 Bath Essentials

Whether you're getting ready for the day or cleaning up after a hike, Bambi features an efficient, spacious bathroom with everything you need close at hand.

## 2 Nature, Brought Indoors

Panoramic windows add real nature to the interior of Bambi allowing you to enjoy the world around you.



## 3 Under-bed Storage

With extra under-bed storage, there's ample room for packing that inevitable additional bag.

## 4 All-electric Refrigerator

The refrigerator runs off battery power, which helps it get cold quicker and efficiently stay cool throughout your trip.

## 5 Appliances

A microwave and a stainless steel sink with cutting board cover make cooking not just easy, but enjoyable.

## 6 Moen® Galley Faucets

Moen faucets bring the residential design and convenience you love at home along for the journey.

## 7 Air Conditioning

When you're setting up camp somewhere hot, the air conditioning with two-speed fan will keep you cool and can serve as a heat source with built in heat strips.

## 8 Memory Foam Mattress

The pillow-top memory foam mattress is made to fit perfectly in the bedroom and provide a good night's rest.

## 9 Dinette

When positioned as a table and seating, the dinette has plenty of room for four people to comfortably eat and socialize. It can be converted to a lounge or sofa as well as a bed for additional seating options.







# START SMALL

## THE AIRSTREAM BAMBI IS THE ANSWER

With the Airstream Bambi Travel Trailer, dreams of adventure become a reality. It's the best of both worlds: A small, lightweight travel trailer that's easy to tow, with the iconic, curved aluminum design expected from Airstream. Inside Bambi, find innovative design and hand-crafted furnishings that will last a lifetime (or more). Make a statement wherever wanderlust leads.

Best of all: Bambi's entry-level price means making big travel dreams come true without a big investment.

So, why wait? The freedom of the road is calling.

Let Bambi be the answer.



# 1 Aluminum Blinds and Blackout Curtains

Blinds throughout the travel trailer provide just the right light, while blackout curtains in the front and back provide complete privacy.

# 2 Performatex®

The durable and comfortable seating fabric resists fading, mildew, mold, and stains.

# 3 Entertainment

A stereo with Bluetooth connectivity streams music from your devices on the stereo, which plays CDs and AM/FM radio. Whether you're plugged into shore power or boondocking on battery power, you can watching the 22" HD LED TV with a DVD player.

# 4 USB and 110V Charging

USB ports and 110V outlets are strategically placed around the travel trailer, so you never have to go far to keep your devices charged and ready.

# 5 Air Conditioner & Furnace

Stay cool when it's hot out and keep toasty when the temperature drops near freezing.

# 6 Two-burner Cooktop

A tempered glass cover that folds down for more working space.

# 7 Roll Top Overhead Cabinets

Overhead cabinetry provides a styled space for your travel necessities.





# TIME TESTED

In 1961, Airstream founder Wally Byam introduced the original Bambi: A single-axle, 16-foot design that didn't skimp on amenities. Wally named it "Bambi" after a sure-footed, nimble African deer he admired while traveling on the famous Cape Town to Cairo Caravan. Today's Airstream Bambi Travel Trailer would make Wally proud: It's lightweight, easy to tow, and thoughtfully

designed. The galley kitchen has all the appliances expected, arranged according to how you use them. The dinette doubles as a lounge space and transforms easily into extra sleeping space. And, the bathroom provides space to get clean without sacrificing the comforts of home. Small in stature, Bambi is big in features.



1

**Rear-view Monitoring**

A rear-view camera is mounted to the back of the travel trailer to make reversing and parking so much easier.

2

**Pre-wired for Solar**

Seamlessly add solar panels and monitor them inside the travel trailer.

3

**Zip Dee® Awning with Weathermax® Fabric**

Pull out the awning to make a shady space for relaxing right outside the front door, and keep your travel trailer cooler in the sun.

4

**Outdoor Storage Locker**

Throw your chairs, bags, games, and more in the outdoor accessible storage locker.

5

**Exterior Shower**

Clean off your gear or take a quick shower before you come inside.

6

**Exterior Low Pressure Gas Grill Connection**

Our low pressure grill connection is made specifically for ease of use with compatible Airstream Weber® Grill.

7

**Single Axle**

Bambi has a single axle, built for agility, ease of towing, and versatility.

8

**Panoramic Window**

A front panoramic window is protected by three rock guard pieces. Each is built to swing away for easy cleaning.







# DECOR Dune



16RB



19CB



20FB



22FB





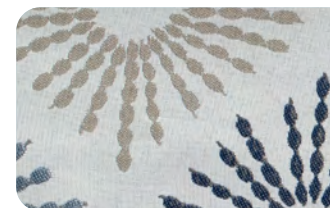
**Seating**



**Bedding**



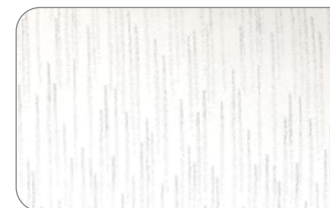
**Accent Pillow**



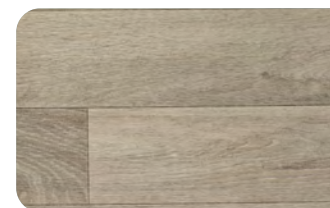
**Laminates**



**Dividing Curtain**



**Flooring**







# DECOR Ocean



16RB



19CB



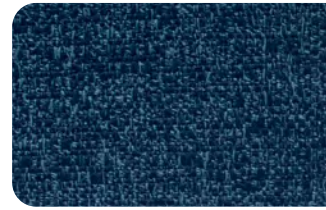
20FB



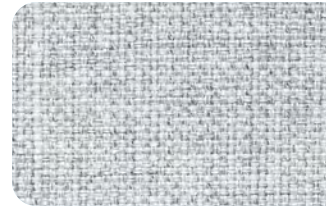
22FB



**Seating**



**Bedding**



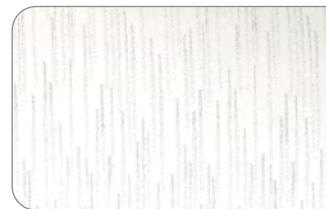
**Accent Pillow**



**Laminates**



**Dividing Curtain**



**Flooring**





## Bambi Specifications

	16RB	19CB	20FB	22FB
Exterior Length	16' 1"	19' 1"	20' 7"	21' 11"
Exterior Width	8'	8'	8'	8'
Interior Width	7' 7"	7' 7"	7' 7"	7' 7"
Exterior Height with A/C	9' 3"	9' 3"	9' 3"	9' 3"
Interior Height with A/C	6' 4"	6' 4"	6' 4"	6' 4"
Hitch Weight (with LP & Batteries)	430	525	540	500
Unit Base Weight (with LP & Batteries)	3,000	3,650	4,000	3,900
Maximum Trailer Capacity (GVWR) (lbs.)	3,500	5,000	5,000	5,000
Net Carrying Capacity (lbs.)	500	1,350	1,000	1,100
Fresh Water Tank (gal.)	23	23	23	23
Gray Water Tank (gal.)	-	29	30	30
Black Water Tank (gal.)	30 (Combo)	18	18	17
30 AMP Service Single A/C with Heat Strip (BTU)	13,500	13,500	13,500	13,500
Ducted Furnace (BTU)	12,000	16,000	18,000	18,000
Refrigerator (12v Electric)	3.1 cu. ft.	4.1 cu. ft.	4.1 cu. ft.	4.1 cu. ft.
Microwave	STD	STD	STD	STD
Convection Microwave Oven	—	—	—	—
Interior Windows and Skylights	7	11	11	9
Master Bed Configurations	48" x 78"	48" x 76"	48" x 78"	54" x 80"
Convertible Dinette, Lounge and Bed	40" x 91"	40" x 91"	40" x 76"	38" x 75"
Sleeping Capacity	Up to 4	Up to 4	Up to 4	Up to 4

## Bambi Exterior Features

Semi-Monocoque Aluminum Superstructure	STD
Fluorocarbon Treated UV Protected Aluminum Exterior	STD
Temperature Reducing One Piece White Aluminum Roof	STD
Thermal Barrier Protection Between Interior & Exterior	STD
Seamless Composite Flooring	STD
Handcrafted Welded Extruded Aluminum Window Frames	Front
Tempered Tinted Windows with Double Cam Latching System	Front
Manual ZipDee® Patio Awning with Weather Max Fabric	STD
LP (2 – 20 lb. Steel Tanks) with Auto 2-stage Regulator	STD

Aluminum LP Cover	STD
Multi-Stage Converter with Auto Detect Features	STD
Exterior LP Gas Low Pressure Grill Connection	STD
Solar Front Window Protection	STD
3M® Film Front Stone Guard Protection	STD
Exterior Shower with Hot & Cold Water	STD
Lockable Fresh Water Tank Inlet	STD
City Water Inlet with Water Pressure Regulator	STD
Black Tank Flush System	STD
Hand Painted Chassis	STD

## Exterior Features (continued)

Torsion Axle Suspension	STD
Manual Hitch Jack	STD
4 Manual Stabilizer Jacks	STD
Goodyear® Endurance ST225/75R15 Tires, Balanced	STD
Stylized Aluminum Wheels	STD
Nev-R-Adjust® Brakes	STD
Spare Tire – Full Size	STD
Solar Pre-wire (3 Rooftop & 1 Front Access Points)	STD
100w (16', 19') or 200w (20', 22') Solar Package with Interior Monitor	OPT
Rear View Monitoring System	STD
Cable TV Hookup	STD
Dedicated Waste Hose Storage	STD
Custom Aluminum Handcrafted	STD
26 in. Wide Entry Door with Window	STD
Aluminum Entry Door Handle	STD
Unique Front Door Key with Heavy Duty Deadbolt	STD
Cast Aluminum Door Hinges	STD
Steel Entry Step	STD
LED Entrance Light	STD
LED Tank Service Light	STD
LED Storage Compartment Light	STD
Cast Aluminum LED Tail Lights	STD
License Plate Bracket with LED Light	STD
Enclosed Aluminum Insulated Heated Underbelly	STD
LED Storage Compartment Light	STD
Cast Aluminum LED Tail Lights	STD
License Plate Bracket with LED Light	STD
Enclosed Aluminum Insulated Heated Underbelly	STD



## Bambi Interior Features

Complete Aluminum Interior Walls and Ceiling	STD
A/C with Heat Strip	STD
Fan with Multiple Speeds	STD
Probeless Tank Monitoring System	STD
EcoBatt™ Insulation	STD
Handcrafted and Welded Aluminum Screen Door	STD
Panoramic Front Windows with Blackout Shades	STD
Handcrafted Italian Lite-Ply Laminated Cabinetry	STD
Seamless Vinyl Flooring	STD
LED Interior Lighting	STD
Overhead Storage with Tambour Doors	STD
Tankless On Demand LP Water Heater	STD
Coat & Key Hooks	STD
Airstream Connected Pre-wire	STD

## Galley, Dinette and Lounge Features

2 Burner Cooktop (LP Gas)	STD
Laminate Galley Top	STD
Stainless Steel Sink	STD
Laminate Dinette Top	STD
Permatex® Stain Resistant Dinette Cushions	STD
Dinette Converts to a Lounge and Sleeping Accommodations	STD
Flatware Organizer	STD
Stereo with Bluetooth® Connectivity	STD
12v/110v LED HD TV with DVD and Omni Directional Antenna	STD
Aluminum Mini Blinds	STD
Moen® Faucet	STD

## Bedroom Features

Pillow Top Memory Foam Mattress	STD
Quilted Bedspread	STD
Decorative Throw Pillows	STD
Sleeping Pillows	STD
Reading LED Lights	STD
Under Bed Storage	STD
Wardrobe with Hanging Bar	STD
LED HD TV (Shared with Lounge)	STD
Blackout Curtain(s)	STD

## Bathroom Features

Removable Hand Held Shower Head with Shut Off	STD
Toilet	STD
Lavy Sink**	STD
Roof Vent/Fan	STD
Towel Bar/Ring	STD
Retractable Clothes Line in Shower	STD
Bathroom Faucet**	STD

## Additional Features

Airstream Logo Entrance Mat	STD
Fire Extinguisher	STD
LP, Smoke & Carbon Monoxide Detectors	STD
Built In Winterization Kit	STD
TRA Certified Green: Emerald Status (Highest Rating)	STD
Internally Routed A/C Condensation Drain Line to Wheel Well	STD
3 Year Airstream Limited Warranty (Transferable)	STD
3 Year 24/7 Coach-Net® Roadside Assistance	STD

\*\* N/A on 16RB





# AIRSTREAM®

1001 West Pike  
Street, P.O. Box 629  
Jackson Center, OH  
45334 USA  
937-596-6111

[www.airstream.com](http://www.airstream.com)



Product information, specifications, and photography in this brochure were as accurate as possible at time of printing. Photographs may contain some features that are optional on your vehicle.

Since we continually strive to improve our products, actual products may differ. Prices and specifications are subject to change without notice. All capacities are approximate and dimensions are nominal. Some features or options may be different or unavailable in other countries.

Warning – This information is intended as a guide only. Weights of individual vehicles may vary. Consult your owner's manual for complete loading, weighing, and towing instructions. Do not overload the travel trailer.

AIRSTREAM®, the Airstream travel trailer trade dress, and all related model names, slogans, logos, trade dress, and trademarks are owned or used under license by Airstream, Inc. All other trademarks are owned by their respective owners.

All content and images  
© Airstream 2022

MKT-00070  
8/21 D