

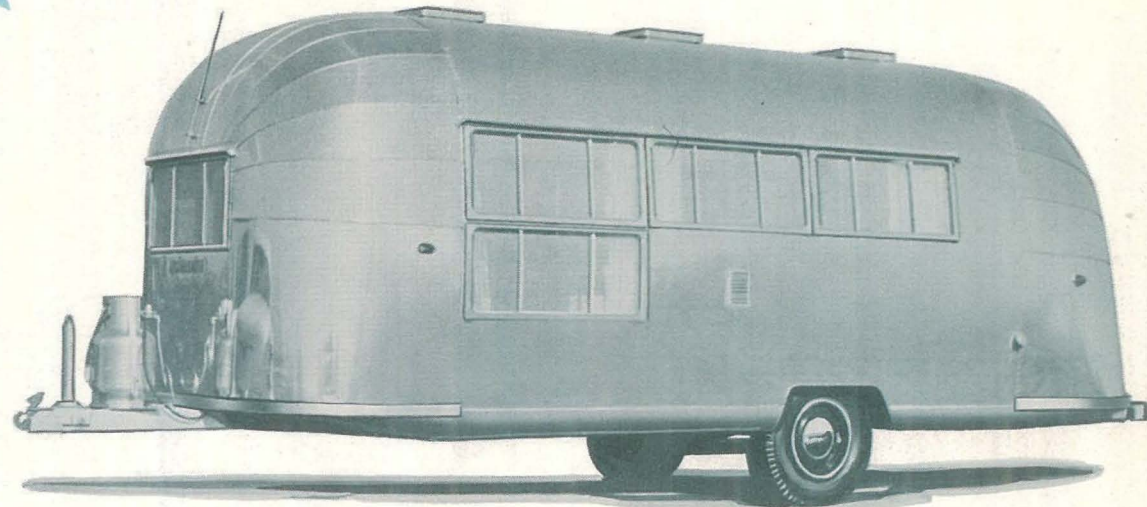
# AIRSTREAM

**1957**  
MODEL

**22-foot**

★ ★ *Adventurous* **CARAVANNER "S"** ★ ★

*Bold, adventurous trailering awaits the young at heart in this excitingly new lightweight Airstream cruising model.*



● The Caravanner "S", in addition to a lovely front living room, double bed and toilet, offers these new standard features; An extra roomy shower, a unique concealed wash bowl that converts into an attractive mirrored vanity and a hot water heater. This wide open, spacious one room trailer is transformed into a two room apartment by simple use of an ingenious folding door. This also provides privacy for bedroom, toilet, lavatory and shower in their rear locations, even while the front living room is in use. The 20 sq. ft. of area in the giant "Panoram" window presents a kaleidoscopic view of all outdoors, while flooding the living room with daylight and ventilation.

● The Caravanner "S" is at home equally well in urban districts or in the wilds. It features such traveling conveniences as butane range, refrigeration and battery powered dome light. Even greater off the road independence is yours by addition of Wally Byam Caravan tested optional features, listed on reverse side. It normally sleeps three but can sleep four. An ideal size for distant trailer excursions, it offers beauty, light weight, long service, plus all of the other traditional Airstream features. If you love adventurous trailering, here is the answer. See your nearest Airstream dealer.

**WORLD'S  
FINEST  
LIGHTWEIGHT  
TRAVEL  
TRAILERS**



**AIRSTREAM**  
TRAILERS, INC.

JACKSON CENTER - SHELBY COUNTY, OHIO



