

*the greatest
advance
in modern
trailer travel!*

THE EXCITING NEW

'54 AIRSTREAM



**SINCE 1932 THE WORLD'S FINEST
LIGHTWEIGHT TRAVEL TRAILERS**

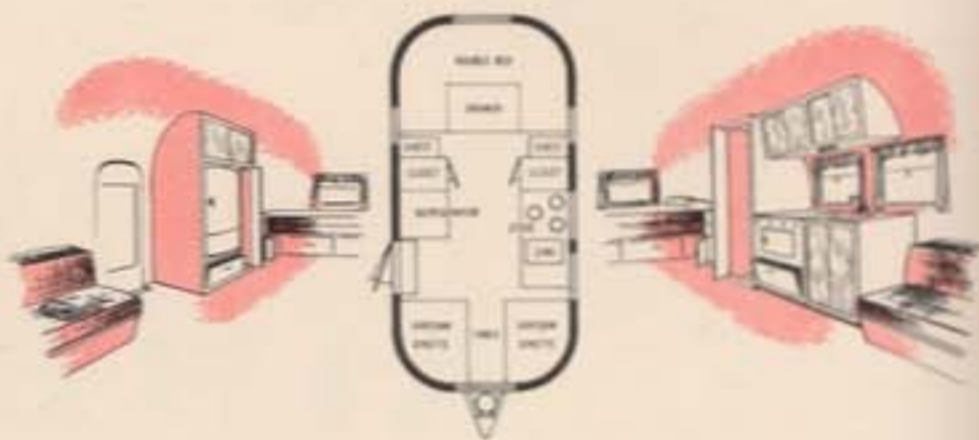
Long famous for lightweight construction and streamlined design, Airstream now brings you our greatest engineering triumph. Spectacular new models for '54...as modern and exciting as the latest fashion mode...as slick and streamlined as tomorrow's airliner. We have drawn upon our long years of trailer building experience and our extensive travel testing to give you the most beautiful, towable trailer on the road today. If you want to travel, if you want modern styling, convenience and durability, be sure to see the fabulous four new Airstream models, 18 ft., 22 ft., 26 ft., 30 ft....you'll be as captivated as every other Airstream owner. Buy with confidence, with assurance that you buy the best...buy Airstream, since 1932 the world's finest travel trailers.

18-FOOT AIRSTREAM GLOBETROTTER



SPECIFICATIONS

Overall length - 18 ft., Body length - 15 ft.
 Overall weight - 2080 lbs., Hitch weight - 240 lbs.
 Double bed with airfoam lined mattress and box springs
 Built-in airfoam dinettes
 3-burner stove with oven
 White porcelain sink
 Combination electric-ice refrigerator
 Formica galley top
 Beautifully grained wood cabinets
 Vinyl linoleum
 2 closets, 8 drawers, 2 roof lockers
 Medicine cabinet
 8-ft. awning rail
 Curtains and textured draw shades
 6 opening windows, 2 roof vents
 Shock absorbers, steel bumpers
 Trunk compartment
 Electric brakes
 Truck wheels, 700-15 6-ply tires
 Escape-type rear windows



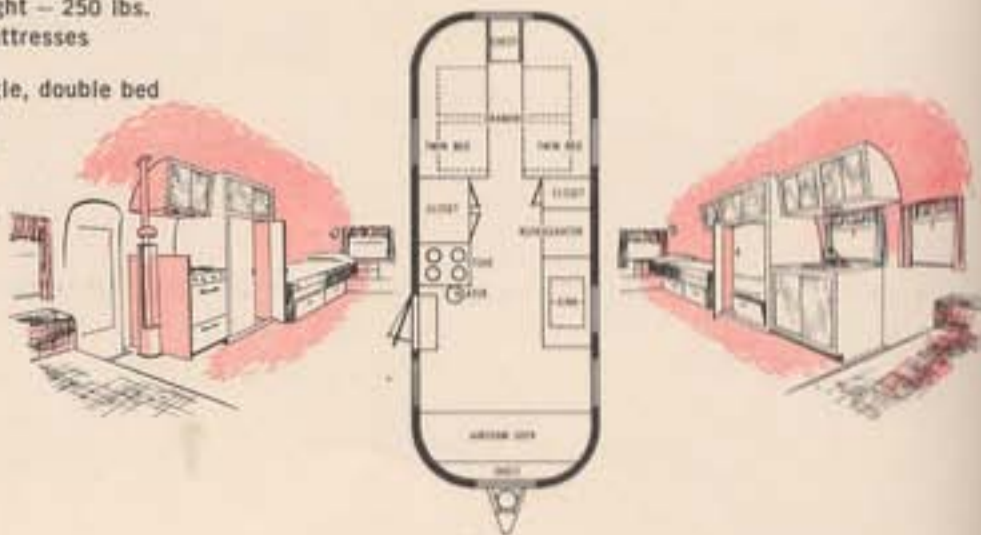
4
GREAT NEW
AIRSTREAM
MODELS...
BIGGER AND
BETTER THAN
EVER BEFORE
FOR '54!

22-FOOT AIRSTREAM FLYING CLOUD



SPECIFICATIONS

Overall length - 22 ft., Body length - 19 ft.
 Overall weight - 2580 lbs., Hitch weight - 250 lbs.
 Double or twin beds, airfoam lined mattresses and box springs
 Airfoam sofa in front, convertible single, double bed
 Apartment size stove, Double sink
 Combination electric-ice refrigerator
 Vinyl linoleum
 Beautifully grained wood cabinets
 3 closets, 11 drawers, 5 roof lockers
 Medicine cabinet
 Porch light
 Oil or butane heat
 7 opening windows, 3 roof vents
 8" power fan over stove
 12-ft. awning rail
 Curtains and textured draw shades
 Butane tank, Trunk compartment
 Shock absorbers, Steel bumpers
 Electric brakes, Truck wheels
 700-15 6-ply tires
 Escape-type rear window

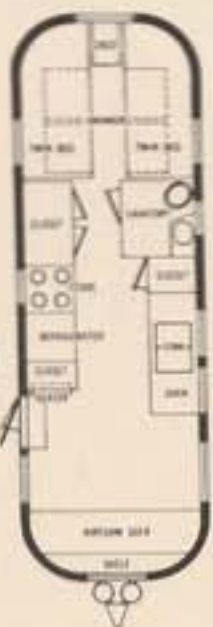


26-FOOT AIRSTREAM CRUISER



SPECIFICATIONS

Overall length—26 ft., Body length—23 ft.
 Overall weight—3280 lbs., Hitch weight—300 lbs.
 Double or twin beds, airfoam lined mattresses
 and box springs
 Airfoam sofa in front, convertible single, double bed
 Hot water heater, Shower and toilet
 Oil or butane heat
 Built-in de luxe oven and broiler with
 separate 4-burner stove top
 Double sinks, Formica galley top
 Combination electric-ice refrigerator
 Beautifully grained wood cabinets
 Vinyl linoleum
 4 closets, 11 drawers, 5 roof lockers
 Medicine cabinet
 10 opening windows, 3 roof vents
 Curtains and textured draw shades
 8" power fan over stove, Double-butane tanks
 Weatherproof electric outlet
 16-ft. awning rail, Porch light, Trunk compartment
 Steel bumpers, Shock absorbers
 Electric brakes, Truck wheels, 700-15 8-ply tires
 Escape-type rear window



greater design appeal
 great towing ease
 greater comfort



*Longer and more
 streamlined for
 safer, easier travel*



*More interior
 space for added
 convenience*



*New airfoam beds
 for more luxurious
 sleeping comfort*



*Colorama interiors
 for more
 pleasurable living*

30-FOOT AIRSTREAM LINER



SPECIFICATIONS

Overall length—30 ft., Body length—27 ft.
 Overall weight—4050 lbs., Hitch weight—320 lbs.
 Double or twin beds, airfoam lined mattresses
 and box springs
 Airfoam sofa in front, convertible single, double bed
 Shower and toilet, Hot water heater, Medicine cabinet
 8" power fan over stove, Oil or butane heat
 Built-in de luxe oven and broiler
 Separate 4-burner stove top, Double sinks
 Combination electric-ice refrigerator
 Vinyl linoleum, Formica galley top
 Beautifully grained wood cabinets
 5 closets, 16 drawers, 5 roof lockers
 11 large windows, 3 roof vents
 Curtains and draw shades
 Double butane tanks
 Weatherproof electric outlet
 20-ft. awning rail, Porch light
 Trunk compartment, Steel bumpers
 Shock absorbers, Electric brakes
 Tandem truck wheels, 700-15 6-ply tires
 Escape-type rear window



*Stretch-formed
 aluminum bows
 for greater strength*



*Featherweight
 construction for
 greater towing ease*

PLUS THESE EXCLUSIVE AIRSTREAM FEATURES

*All-metal, all-aluminum
 construction*

All-riveted body

All-steel undercarriage

*All-over Aero Core
 fiberglass insulation*

*Vibration-proof
 fastenings*

*Arrangements to suit
 your tastes and needs*

*Lifetime construction
 guarantee*



Rome, Italy



The World Traveling "Commodore Vanderbilt"



Mazatlan, Mexico



Managua, Nicaragua



Paris, France



Mexico City, Mexico

AIRSTREAM - TRAVEL TESTED OVER THE HIGHWAYS OF THE WORLD!

Years of experience and millions of miles of travel testing are behind the many exclusive features incorporated in every Airstream. It will go anywhere, and to prove it we take them there - Mexico, Central America, Canada, Europe and many other exciting places. In many instances, the Trailer Caravan Tours pioneered by Wally Byam were the first ever to go into some of these countries. Rough roads, steep grades, unbridged rivers and weather combined to put trailers to the most grueling tests. What does this mean to you? Simply that the Airstream has no peer in travel trailers - it has gone and will go just any place that you could dream of wanting to go with your automobile.



AIRSTREAM

TRAILERS, INC.

WRITE FACTORY NEAREST YOU • 1755 North Main Street, Los Angeles 31, California • 107 Church Street, Jackson Center, Ohio

