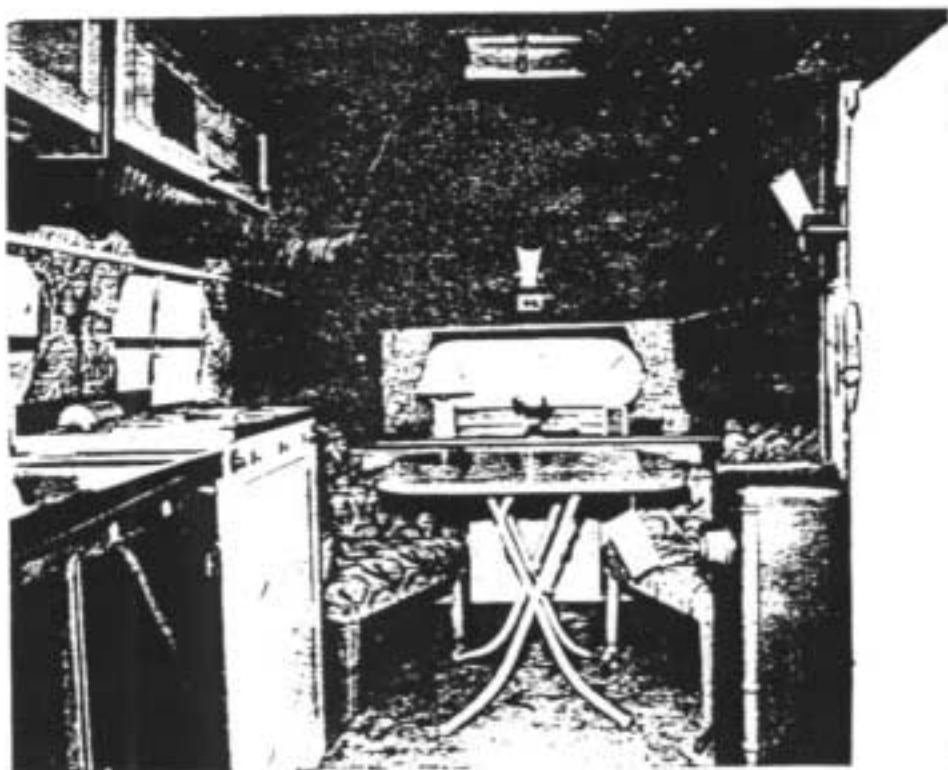




Alfred Letourneur towed this 22' model on his bicycle. Seven floor plans to choose from in this popular model.

Airstream Trailers

• The WORLD'S Lightest — Fastest —

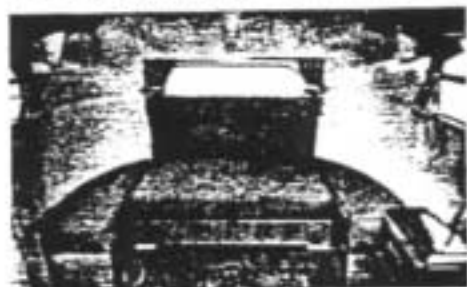


INTERIOR VIEWS OF
"walk-around-bed" MOD
"Honeymoon

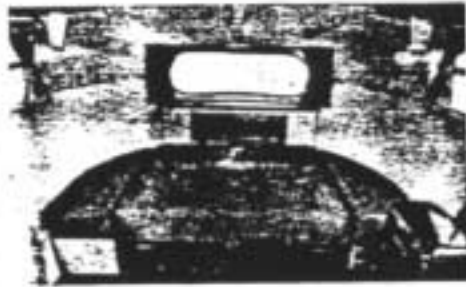
Photo on left shows the two (the chest of drawers and vanity and the formica-top folding table folds up when not in use). The between the oil heater and the on the right.

Photo on right shows; the and ice refrigerator; clothes and innerspring "walk-around" second clothes closet; and the galley. Closet doors come tog

AIRSTREAM LINER'S 3-PIECE DIVAN SET



Above photo shows the 3-piece divan set for day use. Note storage space under both pads. There is also additional storage space under the divan. This divan is especially well constructed with double inner-springs. The formica-top folding table (in front) and permits comfortable seating for four people—one on each pad and two on the divan itself.



The divan folded down for sleeping—The divan itself is 45' long, permitting your whole body to rest on one unbroken surface, using one pad for pillows and the other pad for your feet. This is standard in the 18 ft. model but can also be furnished in the larger models. (Note window permitting clear vision through trailer.)

DEALERS

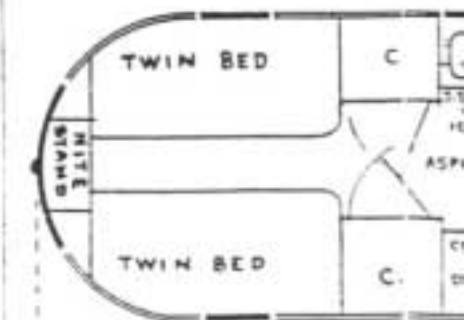
Do you know we have inquiries from your territory? They write in from the north, east, south, west. We don't know of a single section of the United States from which we do not receive inquiries. If you are interested in selling AIRSTREAM LINERS in your territory, contact McFaul Brothers at once.



20'

"Second Honeymoon"

The "Honeymoon Special" and are identical in size and for See reverse side about insul



20'

Liner NEWS

— EASIEST TOWING TRAILER COACHES •

REMEMBER!

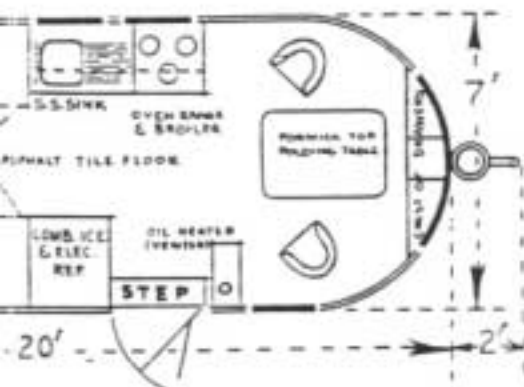
Nothing—Absolutely
NOTHING—

is as important as light weight if
you intend to tow a trailercoach.

... OF THE SOUTHWIND
MODEL, 20' body, 22' over-all
Honeymoon Special

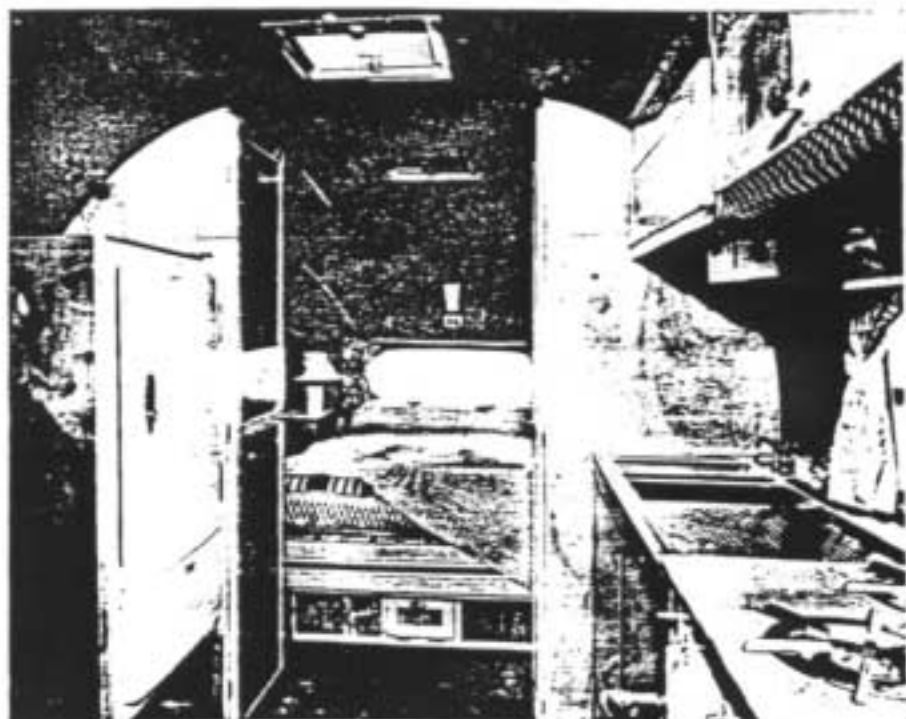
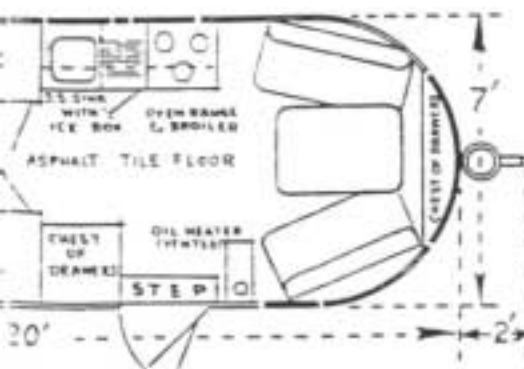
... two comfortable lounging chairs;
... vanity stand in front (see drawings);
... table (folds down to coffee size or
... The entrance to the trailer is
... and the chest-high refrigerator shown

... the chest-high combination electric
... clothes closet; full size box springs
... "dune" bed; two night stands; the
... and the stainless steel and aluminum
... together to form separate bedroom.



Honeymoon Special

... and the 2nd "Honeymoon Special"
... furnishings except for the beds,
... insulation.



AIRSTREAM LINER IS SAFE ON HIGHWAYS

The AIRSTREAM LINER is the SAFEST trailercoach in the WORLD for the highway... easier on your car... on your nerves... safer in traffic, mountains—"tight" places... safer when passing or being passed by buses or trucks, as the Airstream Liner design keeps the vortex, or suction of the wind, to an absolute minimum.

PRESENT AIRSTREAM LINERS

Length—20 ft. body 22 ft. overall
Width—7 ft. Height—8 ft. 2 in.
Weights Approx. 1250 lbs. Unfurnished
Weights Approx. 1900 to 2000 lbs. Furnished

The "TRAILWIND"

Length—18 ft. body; 18 ft. overall
Width—7 ft. Height—8 ft. 2 in.
Weights Approx. 1090 lbs. Unfurnished
Weights Approx. 1650 lbs. Furnished

New Additional Model Airstream

Length—22 ft. body 24 ft. overall
Width—7 ft. 10 in. Height—8 ft. 3 in.
Certified Weight 1795 lbs. Unfurnished
Weights Approx. 2500 to 2600 lbs. Furnished

This new model represents the utmost in durability—equipped with light weight and easy towing—making it one of the most desired trailercoaches on the market today. Luxuriously furnished. Toilet, Shower, Water heater, Electric Refrigerator, Twin Beds optional. LIST PRICE \$2995

AIRSTREAM LINERS are internationally distributed by

Claude McFaul
President



4660 SAN FERNANDO ROAD
GLENDALE 4, CALIFORNIA
CITRUS 3-6906